

Product datasheet for **RG239773**

Nephrocystin 4 (NPHP4) (NM_001291593) Human Tagged ORF Clone

Product data:

Product Type:	Expression Plasmids
Product Name:	Nephrocystin 4 (NPHP4) (NM_001291593) Human Tagged ORF Clone
Tag:	TurboGFP
Symbol:	Nephrocystin 4
Synonyms:	POC10; SLSN4
Mammalian Cell Selection:	Neomycin
Vector:	pCMV6-AC-GFP (PS100010)
E. coli Selection:	Ampicillin (100 ug/mL)



[View online »](#)

ORF Nucleotide Sequence:

>RG239773 representing NM_001291593.
 Blue=ORF Red=Cloning site Green=Tag(s)

```

GCTCGTTTAGTGAACCGTCAGAATTTTGTAAACGACTCACTATAGGGCGGCCGGGAATTCGTGACTG
GATCCGGTACCGAGGAGATCTGCCGCCCGCATCGCC
ATGCACCCACGGAGCCTGTCAGTGGCCCCAAAGTGGAGCGGGCCCTCCAGGAAACCACCCACGTCCC
CTTCGAGAGTCCCGTTGGAGGCCGGTATCTCCACCTGGAAGCCGACCTGAGCCAGACCTCCCTGGTC
CTGGAAACATCCATTGCCGAACAGTTACAGGAGCTGCCGTTACGCCTTTGCATGCCCTATTGTTGTG
GGAACCCAGACCAGGAGCTCTGCAGGGCAGCCCTCGAGAGCCTCCATGGTGCTCTGCAGTCTCCGGC
TTTCCCGAGATTCTGGATGCCAATAAACAGCCAGCCGAGGCTGTCAGCGCTACAGAACCTGTGACGTTT
AACCTCAGAAGGAAGAATCAGATTGTCTACAAAGCAACGAGATGGTGCTACAGTTTCTTGCCTTACG
AGAGTGGCCAGGACTGCCGAGGAACATCATGGCCAAAGACTGTGTATTTACCTTCCAGTTCTACCGC
TTCCACCCGCAACGACGCCAGCTGCAGCTGGTCCAGCTGGATGAGGCCGGCCAGCCAGCTCTGGC
GCCCTGACCCACATCCTCGTGCCTGTGAGCAGAGATGGCACCTTTGATGTGGGTCTCCTGGCTCCAG
CTGAGGTACATGGTGGGCCCTGGGTTCCGAAGCCAGGTGAGCGCGCTGCTTTGCCGCTACCTGGCC
GTGCAGACCTGCAGATTGACGTCTGGGACGGAGACTCCCTGCTGCTCATCGGATCTGCTGCCGTCCAG
ATGAAGCATCTCCTCCGCAAGGCCGGCCGGCTGTGCAGGCCCTCCACGAGCTTGAGGTCGTGGCAACT
GAATACGAGCAGGACAACATGGTGGTGAGTGGAGACATGCTGGGTTTGGCCGCTCAAGCCATCGGC
GTCCACTCGGTGGTGAAGGGCCGGCTGCACCTGACTTTGGCCAACGTGGGTACCCCGTGTGAACAGAAA
GTGAGAGGTTGTAGCACATTGCCACCGTCCAGATCTCGGGTCATCTCAAACGATGGAGCCAGCCGCTT
TCTGGAGGCAGCTCCTCAGACTGGAAGCTCAAGGCCAAAACACGTGGTGAAGCACAGAAGCTGGCG
GACGTGGACAGTGAAGTGGTGGCCATGCTACTGACCCATGCCCGCAGGGCAAGGGGCCAGGACGTC
AGCCCGAGTTCGGATGCCACCCGAGCGTAAGCTGGAGCGGATGAGGCTGTGCGCTCGAGAGGGCC
GGGGGAGACTTGGCCCGCGCGGGACGAGCGTGTGGCGCAGCAGAGCTCCGCACACAGCACTTGCAG
GACCTACAGTTCATCGCCGCTACCGGGAACGCACGAAGGCCGAGAGCATCGCCAGCCTGCTGAGCCTG
GCCATCACACGGAGCACACGCTCCACGCCAGCTGGGGTTCGCCGAGTTCTTTGAGTTTGTGCTTAAG
AACCCCAACAACACAGCACACGGTACTGTGGAGATCGACAACCCGAGCTCAGCGTATCGTGGAC
AGTCAGGAGTGGAGGGACTTCAAGGGTGTGCTGGCTGCACACCCGGTGGAGGAGACATGTTCCAC
CTGCGTGGCAGCTGGCCCCCAGCTCTACCTGCGCCCCACGAGACCGCCACGCTCCCTTCAAGTTC
CAGAGCTTCTCTGAGGGCAGCTGGCCATGGTGCAGGCCCTCCTGGGTTGAGCAACGAGAAGGGCATG
GACGCCGTGTACCTTGAAGTCCAGCGCAGTGGCCACTAAACAGCCAAGGTCTTGTTCGAGCGAGT
GGTGGCAAGCCATCGCCGTGCTCTGCCTGACTGTGGAGCTGCAGCCCCAGTGGTGGACCAGGTCTT
CGTCTTATCACCCGGAGCTCTCCTTCTGAAGAAGGCCATCCGCTGCCGCCCTGGCACACATTTCCA
GGTGTCCGGTGGGAATGCTTGGTGGAGACCCCCAGTCCATGTTGCTGCAGCGACCCGAACGTATC
TGTGAGACCCAGAATGTGGGCCCGGGAAACCAGGGACATATTTCTGAAGGTGGCCAGTGGTCCAAGC
CCGAGATCAAAGACTTCTTTGTATCATTACTCGGATCGTGGCTGGCGACACCCACACAGACGTGG
CAGGTCTACCTCCACTCCCTGCAGCGGTGGATGTCTCCTGCGTCGACAGCCAGCTGACCCGCTGTCC
CTTGTCTTCCGGGGACACAGACAGTGAAGAAAGTGAAGCTTTACCTCTATCCCAGGAGCTGAAG
ACAGACCCAAAGGTGTCTTCTGTGCTGCCGCTCGTGGGGTGCAGGACCTGCATGTTGGCGTGGGCC
CTTAGGGCCGGCAGCCGCTTTGTCCATCTCAACCTGGTGGACGTGGATTGCCACCAGCTGGTGGCCTCC
TGGCTCGTGTGCCTCTGCTGCCGCCAGCCGCTCATCTCCAAGGCCTTTGAGATCATGTTGGCTGCGGGC
GAAGGGAAGGGTGTCAACAAGAGGATCACCTACACCAACCCCTACCCCTCCCGGAGGACATTCCACCTG
CACAGCGACACCCGGAGCTGCTGCGGTTAGAGAGGACTCCTTCCAGGTGGGGGTGGAGAGACCTAC
ACCATCGGCTTGCAAGTTTGCCTAGTCAGAGAGTGGGTGAGGAGGAGATCCTGATCTACATCAATGAC
CATGAGGACAAAAACGAAGAGGCATTTTGCCTGAAGGTCTCTACCG
ACGCGTACGCGGCCGCTCGAG - GFP Tag - GTTTAAAC
  
```

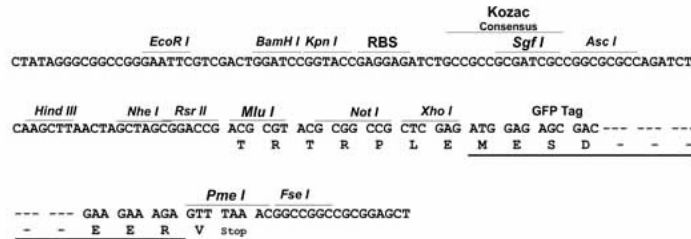
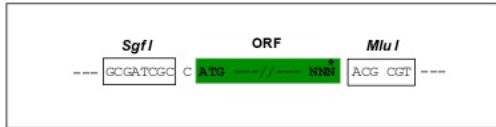
Protein Sequence: >Peptide sequence encoded by RG239773
 Blue=ORF Red=Cloning site Green=Tag(s)

MHPRSLSVAPKWSGGLPGNHRPLREFPLEAGISHLEADLSQTSVLVETSIAEQLQELPFTPLHAPIVV
 GTQTRSSAGQPSRASMVLLQSSGFPEILDANKQPAEAVSATEPVTNPNQKEESDCLQSNEMVLQFLAFS
 RVAQDCRGTSWPKTVYFTFQFYRFPPATTPRLQLVQLDEAGQPSSGALTHILVPVSRDGTFDAGSPGFQ
 LRYMVGPGFLKPGERRCFARYLAVQTLQIDVWDGDSLLLIGSAAVQMKHLLRQGRPAVQASHELVVAT
 EYEQDNMYYVSGDMLGFRVKPIGVHSVVKGRHLHLTLANVGHPCQKVRGCSTLPPSRSRVINSNDGASRF
 SGGSLLTGSSRRKHVVQAQKLADVSELAAMLLTHARQKGPQDVSRESDATRRRKLERMRSVRLQEA
 GGDLRGRGTSVLAQQSVRTQHLRDLQVIAAYRERTKAESIASLLSLAITTEHTLHATLGVAEFFEVLK
 NPHNTQHTVTVEIDNPELSVIVDSQEWDRDFKGAAGLHTPVEEDMFHLRGLAPQLYLRPHETAHVPFKF
 QFSAGQLAMVQASPLSNEKGMDAVSPWKSSAVPTKHAKVLFASGGKPIAVLCLTVELQPHVVDQVF
 RFYHPELSFLKKAIRLPPWHTFPGAPVGMLEDPPVHVRCDPNVICETQNVGPGEPDIFLKVASGSP
 PEIKDFVVIYSRDLATPTQTWQVYLHSLQRVDVSCVAGQLTRLSLVLRTGTQTRKVRRAFTSHPQELK
 TDPKGVFVLPFRVQDLHVGVRPLRAGSRFVHLNLDVDVCHQLVASWLVCLCCRQPLISKAFIIMLAG
 EGKGVNKRITYTNPYPSRRTFHLHSDHPELLRFREDSFQVGGGETYITGLQFAPSQRVGEIEILYIND
 HEDKNEEAFCKVIYQ
 TRTRPLEMESDESGLPAMEIECRITGTLNGVEFELVGGEGTPEQGRMTNKMSTKGALTFSPYLLSHV
 MGYGFYHFGTYPSTYENPFLHAINNGGYNTRIEKYEDGGVLHVSFSYRYEAGRVIGDFKVMGTGFPED
 SVIFTDKIIRSNTAVEHLHPMGDNDLDGSFTRTFSLRDGGYSSVVDSDHMFKSAIHPSILQNGGPMFA
 FRRVEEDHSNTELGIVEYQHAFKTPDADAGEERV

Restriction Sites: Sgfl-MluI

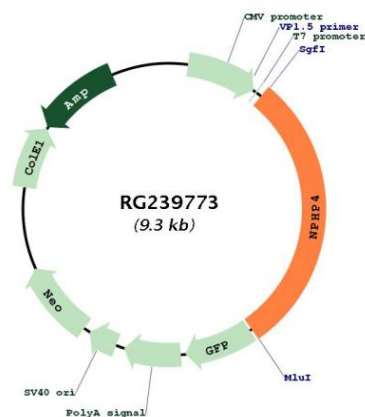
Cloning Scheme:

Cloning sites used for ORF Shutting:



ACCN:	NM_001291593
ORF Size:	2739 bp
OTI Disclaimer:	The molecular sequence of this clone aligns with the gene accession number as a point of reference only. However, individual transcript sequences of the same gene can differ through naturally occurring variations (e.g. polymorphisms), each with its own valid existence. This clone is substantially in agreement with the reference, but a complete review of all prevailing variants is recommended prior to use. More info
OTI Annotation:	This clone was engineered to express the complete ORF with an expression tag. Expression varies depending on the nature of the gene.
Components:	The ORF clone is ion-exchange column purified and shipped in a 2D barcoded Matrix tube containing 10ug of transfection-ready, dried plasmid DNA (reconstitute with 100 ul of water).
RefSeq:	NM_001291593.2
RefSeq Size:	4710 bp
RefSeq ORF:	2742 bp
Locus ID:	261734
UniProt ID:	O75161
Cytogenetics:	1p36.31
MW:	101.4 kDa
Gene Summary:	This gene encodes a protein involved in renal tubular development and function. This protein interacts with nephrocystin, and belongs to a multifunctional complex that is localized to actin- and microtubule-based structures. Mutations in this gene are associated with nephronophthisis type 4, a renal disease, and with Senior-Loken syndrome type 4, a combination of nephronophthisis and retinitis pigmentosa. Alternative splicing results in multiple transcript variants. [provided by RefSeq, Apr 2014]

Product images:



Circular map for RG239773

