

Product datasheet for **RG239772**

MCK10 (DDR1) (NM_001297654) Human Tagged ORF Clone

Product data:

Product Type:	Expression Plasmids
Product Name:	MCK10 (DDR1) (NM_001297654) Human Tagged ORF Clone
Tag:	TurboGFP
Symbol:	MCK10
Synonyms:	CAK; CD167; DDR; EDDR1; HGK2; MCK10; NEP; NTRK4; PTK3; PTK3A; RTK6; TRKE
Mammalian Cell Selection:	Neomycin
Vector:	pCMV6-AC-GFP (PS100010)
E. coli Selection:	Ampicillin (100 ug/mL)



[View online »](#)

ORF Nucleotide Sequence:

>RG239772 representing NM_001297654.
 Blue=ORF Red=Cloning site Green=Tag(s)

```

GCTCGTTTAGTGAACCGTCAGAATTTTGTAAACGACTCACTATAGGGCGGCCGGGAATTCGTGACTG
GATCCGGTACCGAGGAGATCTGCCGCCCGGATCGCC
ATGGGACCAGAGGCCCTGTATCTTTACTGCTGCTCTTGGTGCCAAGTGGAGATGCTGACATGAAG
GGACATTTTGATCCTGCCAAGTGGCGCTATGCCCTGGGCATGCAGGACCGGACCATCCAGACAGTGAC
ATCTCTGCTTCCAGCTCCTGGTCAGATTCCAAGTCCGCGCCGCCACAGCAGGTTGGAGAGCAGTGACGGG
GATGGGGCCTGGTGCCCCGAGGGTCGGTGTTCCTCAAGGAGGAGGAGTACTTGCAGGTGGATCTACAA
CGACTCCACCTGGTGGCTCTGGTGGGCACCCAGGGACGGCATGCCGGGGCCCTGGGCAAGGAGTTCTCC
CGGAGCTACCGGCTGCGTTACTCCCGGGATGGTCGCCGCTGGATGGGCTGGAAGGACCGCTGGGGTCAG
GAGGTGATCTCAGGCAATGAGGACCTGAGGGAGTGGTGTGAAGGACCTTGGGCCCCCATGGTTGCC
CGACTGGTTGCTTACCCCCGGGCTGACCGGGTCATGAGCGTCTGTCTGCGGGTAGAGCTCTATGGC
TGCTCTGGAGGGATGGACTCCTGTCTTACACCGCCCTGTGGGGCAGACAATGATTTATCTGAGGCC
GTGTACCTCAACGACTCCACCTATGACGGACATACCGTGGCGGACTGCAGTATGGGGTCTGGGCCAG
CTGGCAGATGGTGTGGTGGGGCTGGATGACTTTAGGAAGAGTCAGGAGCTGCGGGTCTGGCCAGGCTAT
GACTATGTGGGATGGAGCAACCACAGCTTCTCCAGTGGCTATGTGGAGATGGAGTTTGAGTTGACCGG
CTGAGGGCCTTCCAGGCTATGCAGGTCCACTGTAACAACATGCACACGCTGGGAGCCCGTCTGCCTGGC
GGGGTGAATGTCGCTTCCGGCTGGCCCTGCCATGGCCTGGGAGGGGGAGCCCATGCGCCACAACCTA
GGGGGCAACCTGGGGGACCCAGAGCCCGGGTGTCTCAGTGCCTTGGCGGCCGTGTGGCTCGCTTT
CTGCAGTGCCGCTTCTCTTTGCGGGCCCTGGTACTCTCAGCGAAATCTCCTCATCTCTGATGTG
GTGAACAATTCTCTCCGGCACTGGGAGGCACCTTCCCGCCAGCCCTGGTGGCCGCTGGCCACCT
CCACCAACTTCAGCAGCTTGGAGCTGGAGCCAGAGCCAGCAGCCCGTGGCCAAGCCGGGGAGC
CCGACCGCATCCTCATCGGCTGCCTGGTGGCCATCATCCTGCTCTGCTCATCATTGCCCTCATG
CTCTGGCGGCTGCACTGGCGCAGGCTCCTCAGCAAGGCTGAACGAGGGTGTGGAAGAGGAGCTGACG
GTTACCTCTCTGCTCCCTGGGGACACTATCCTCATCAACAACCGCCAGGCTCTAGAGAGCCACCCCG
TACCAGGAGCCCGGCTCGTGGGAATCCGCCCACTCTGCTCCCTGTGTCCTCAATGGCTCTGCGTTG
CTGCTCTCAATCCAGCTACCGCTCCTTCTGGCCACTACGCCCGTCCCTCGAGGCCCGGGCCCC
CCCACACCCGCTGGGCCAAACCCACCAACCCAGGCCACAGTGGGGACTATATGGAGCTGAGAAG
CCAGGCGCCCGCTTCTGCCCCACCTCCCGAAGCAGCGTCCCCATTATGCCGAGGCTGACATTGTT
ACCTGCAGGGGCTCACCAGGGGCAACACCTATGCTGTGCTGCACTGCCCCAGGGGAGTCGGGGAT
GGGCCCCCGAGAGTGGATTTCCCTCGATCTCGACTCCGCTTCAAGGAGAAGCTTGGCGAGGGCCAGTTT
GGGGAGGTGCACCTGTGTGAGGTGACAGCCCTCAAGATCTGGTCACTTGTATTCCCCCTTAATGTG
CGTAAGGGACACCCTTGTGCTAGTGTCAAGATCTTACGGCCAGATGCCACCAAGAAATGCCAGGAAT
GATTTCTGAAAGAGGTGAAGATCATGTGAGGCTCAAGGACCAACATCATTCCGGTGTGGCGGTG
TGTGTGACAGGACGACCCCTCTGCATGATTACTGACTACATGGAGAACGGTGACCTCAACCAGTTCTC
AGTGCCACACAGCTGGAGGACAAGGCAGCCGAGGGGGCCCTGGGACCGGCAGGCTGCGCAGGGGCC
ACCATCAGTACCAATGCTGCTGCATGTGGCAGCCAGATCGCTCCGGCATGCGTATCTGGCCACA
CTCAACTTTGTACATCGGGACCTGGCCACGCGGAACTGCCTAGTTGGGGAAAATTTCCACATCAAATC
GCAGACTTTGGCATGAGCCGGAACCTCTATGCTGGGACTATTACCGTGTGACGGCCGGGAGTGTG
CCCATCCGCTGGATGGCCTGGGAGTGCATCCTCATGGGAAGTTCACGACTGCGAGTGACGTGTGGCC
TTTGGTGTGACCTGTGGGAGGTGCTGATGCTCTGTAGGGCCAGCCCTTGGGAGCTCACCGACGAG
CAGGTATCGAGAACGCGGGGAGTTCTTCCGGGACCAGGGCCGGCAGGTGTACCTGTCCCGGCCCT
GCCTGCCCGCAGGGCCTATATGAGCTGATGCTTCCGGTGTGAGCCGGGAGTCTGAGCAGCGACCC
TTTTCCAGCTGCATCGGTTCTGGCAGAGGATGCACTCAACACGGTG
ACGCGTACGCGGCCGCTCGAG - GFP Tag - GTTTAAAC
  
```

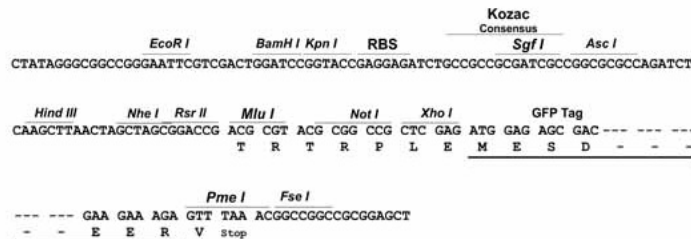
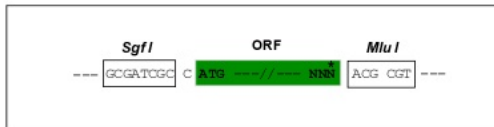
Protein Sequence: >Peptide sequence encoded by RG239772
 Blue=ORF Red=Cloning site Green=Tag(s)

MGPEALSSLLLLL VASGDADMKGHFDPKCRYALGMQDRTIPDSISASSSWSDSTAARHSRLESSDG
 DGAWCPAGSVFPKEEYLQVDLQRLHL VAL VGTQGRHAGGLGKEFSRSYRLRYSRDGRRWGKDRWGQ
 EVISGNEDPEGVVLKDLGPPMVARL VRFYPRADRVMSVCLRVEL YGCLWRDGLLSYAPVGTMYLSEA
 VYLNDSYDGHTVGGLQYGGGLQGLADGVVGLDDFRKSQELRVWPGYDYVGSNHSFSSGYVEMEFEDR
 LRAFQAMQVHCNMHTLGARLPGGVECRFRRGPAMAWEGEPMRHNLGGNLGDPRARAVSVPLGGRVARF
 LQCRFLFAGPWLLFSEISFISDVVNNSSPALGGTFPPAPWPPGPPPTNFSSLELEPRGQQPVAKAEGS
 PTAILIGCLVAIILLLLIIALMLWRLHWRLLSKAERRVLEEELTVHLSVPGDTILINNRPGPREPPP
 YQEPRPRGNPPHSAPCVNPGSALLL SNPAYRLLLATYARPPRGPPTPAWAKPTNTQAYSGDYMEPEK
 PGAPLLPPPQNSVPHYAEADIVTLQGVGTGNTYAVPALPPGAVGDGPPRVDFPRSRLRFKEKLGEGQF
 GEVHLCEVDSPQDLVSLDFPLNVRKGHPLL VAVKILRPDATKNARNDFLKEVKIMSRLKDPNIIRLLGV
 CVQDDPLCMITDYMENGLNQFLSAHQLEDKAAEGAPGDGQAAQGPTISYPMLLHVAAQIASGMRYLAT
 LNFVHRDLATRNLVGENFTIKIADFGMSRNL YAGDYRVRVQGRAVLP IRWMAWECILMGKFTTASDVWA
 FGVTLWEVLMCRAQPFQQLTDEQVIENAGEFFRDQGRQVYLSRPPACPQGLYELMLRCWSRESEQRPP
 FSQLHRFLAEDALNTV
 TRTRPLEMESDESGLPAMEIECRITGTLNGVEFELVGGEGTPEQGRMTNKMSTKGALTFSPYLLSHV
 MGYGFYHFGTYPSTYENPFLHAINNGGYNTRIEKYEDGGVLHVSFSYRYEAGRVIGDFKVMGTGFPEP
 SVIFTDKIIRS NATVEHLHPMGDNDLDGSFTRTFSLRDGGYSSVVD SHMHFKSAIHP SILQNGGPMFA
 FRRVEEDHSNTELGIVEYQHAFKTPDADAGEERV

Restriction Sites: Sgfl-MluI

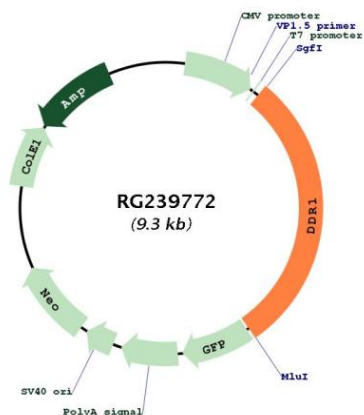
Cloning Scheme:

Cloning sites used for ORF Shutting:



ACCN:	NM_001297654
ORF Size:	2739 bp
OTI Disclaimer:	The molecular sequence of this clone aligns with the gene accession number as a point of reference only. However, individual transcript sequences of the same gene can differ through naturally occurring variations (e.g. polymorphisms), each with its own valid existence. This clone is substantially in agreement with the reference, but a complete review of all prevailing variants is recommended prior to use. More info
OTI Annotation:	This clone was engineered to express the complete ORF with an expression tag. Expression varies depending on the nature of the gene.
Components:	The ORF clone is ion-exchange column purified and shipped in a 2D barcoded Matrix tube containing 10ug of transfection-ready, dried plasmid DNA (reconstitute with 100 ul of water).
RefSeq:	NM_001297654.1 , NP_001284583.1
RefSeq Size:	3833 bp
RefSeq ORF:	2742 bp
Locus ID:	780
UniProt ID:	Q08345
Cytogenetics:	6p21.33
Protein Families:	Druggable Genome, Protein Kinase, Transmembrane
MW:	101.1 kDa
Gene Summary:	Receptor tyrosine kinases play a key role in the communication of cells with their microenvironment. These kinases are involved in the regulation of cell growth, differentiation and metabolism. The protein encoded by this gene belongs to a subfamily of tyrosine kinase receptors with homology to Dictyostelium discoideum protein discoidin I in their extracellular domain, and that are activated by various types of collagen. Expression of this protein is restricted to epithelial cells, particularly in the kidney, lung, gastrointestinal tract, and brain. In addition, it has been shown to be significantly overexpressed in several human tumors. Alternatively spliced transcript variants encoding different isoforms have been described for this gene. [provided by RefSeq, Feb 2011]

Product images:



Circular map for RG239772