

Product datasheet for **RG239770**

NFXL1 (NM_001278624) Human Tagged ORF Clone

Product data:

Product Type:	Expression Plasmids
Product Name:	NFXL1 (NM_001278624) Human Tagged ORF Clone
Tag:	TurboGFP
Symbol:	NFXL1
Synonyms:	CDZFP; HOZFP; OZFP; URCC5
Mammalian Cell Selection:	Neomycin
Vector:	pCMV6-AC-GFP (PS100010)
E. coli Selection:	Ampicillin (100 ug/mL)



[View online »](#)

ORF Nucleotide Sequence:

>RG239770 representing NM_001278624.
 Blue=ORF Red=Cloning site Green=Tag(s)

```

GCTCGTTTAGTGAACCGTCAGAATTTTGTAAACGACTCACTATAGGGCGGCCGGGAATTCGTGACTG
GATCCGGTACCGAGGAGATCTGCCGCCCGGATCGCC
ATGGAAGCTTCTGGCGCCAGGTGGCCGGTGGCCGAGGCCGATCCCGGGGACGGGCCACTGCCGCCCC
TCAGGAAATGGAGTCCATCTCCGCGCCGCGGAGGAGGGCGAGAGAAGGGGTCGGTGGGCGCAGTTCCT
TCTGGCACCAAGTCCCGGAGGAGTCCGACACCGCGGCTGCAGGAGCAGGCACAGCCCCGAGGATCC
CAAGCCCTGCAGACTACCGCAGCCAGCAGCTAATGTCTCAGAAAAAATTTGAAGAAATCAAGAAAGCT
AACCAAGCTGCAGCCAGAAAACTTGTGAAGAACAGTTTACTCTTTCATCTGAAGAAGGAGATGAAGAT
TTTGAAGGAAACAGGAAAAACTTGTGCAAAATACGTTTATAACATACACTACTCAGACAGATGGAGAT
ACACGTGAATTAGAGCGAACAAAACAATATGTAATGAAGCTTTTCAAGCAGGGGCTATGACATGCCTA
ATTTGTATTGCTTCGGTGAAGAGAAACCAAGCAGTTTGGAGCTGTTGGGATGTTTCTGTATATTTAC
ATGCCCTGTATCCAGAAGTGGGCTAAAGACAGCCAGTTTCTTGTATCTTCTGTGACTGATGATTTTT
GGAAAGAAAGATTGTCCCTGGCCTTGCCAAAATGTAGGTTTGAATACAAACGATCTGAAACACCTAGT
AGGTAATAATTGCTATTGTGGAAAAGTAGAAGATCCACCTTTAGATCCGTGGCTTGTGCCCTATTCATGT
GGCCAAGTATGTGAGCGTGAATTTAAACCTCCTTGTGGCCATAAATGTTTACTCCTCTGTATCCAGGT
CCCTGCCCTCCTTGTCCAAAGATGGTCACTACTTGTACTGTAAAGAAAGCAAAACCTATCCCTCGT
AGGTGCAGTGCCAAGGAATGGTCTTGTGACAGTCCATGTGGACAGAAAGTGTCTTGTGGGCAACATAAG
TGTGAAAATCCTTGTGATGCAGGAAGCTGTGACGCTTGTCCAAGAGTTAGTAGACAAAAGTGTGTCTGT
GGCAAAAAGTAGCTGAAAGAAGTTGTGCAAGTCCACTATGGCACTGTGATCAAGTATGTGAAAAACA
CTGCCATGTGGTAATCACACATGTGAGCAAGTTGCCATGTTGGTGTGTTGGAGAATGTCCCTCGATCT
GGAAAGGTTTGTCCATGTGCAAAATCAAAGTTTCTTGTGCTTGTACAGAAGATGTACCAACTGTG
GGAGACAGTTGTGACAAAAGTACTTGAATGCGGAATCCATAGATGTTACAGCGTTGTACCGAGGTC
TGTGAAACATGTAGACAAGAAGTGGAAAAGCATTGTGCTGTGGAAGCATACAAAACGAATGCCTTGT
CATAAACCTTATCTGTGTGAAACTAAGTGTGTTAAGATGCGTACTGTGCAAGCATCAATGTAGAAGA
AAGTGTGGCCCTGAAACTGTCCACCTTGTGATCAAACTGTGGACGGACTTTAGGATGTAGAAACCAT
AAGTGTCCATCTGTCTGTGACAGAGGCAGTTGCTATCCCTGCCAGAAACCGTAGATGTGAAGTGAAT
TGTGGCAATACAAAGGTGACAGTGCCTGTGGCCGAGAACGTACCACAAGACCACCAAGTGAAGGAG
CAATGCAGTCGACCACCAACTTGTATCATAACAAGTCAAGAAAAACATCGCTGTCACTTTGGTTCTTGT
CCACCATGTATCAACCTTGCCAAAAGTTTTGGAGAAATGTGGTCACTTGTGCTCTGCTCCGTGTCAT
GATCAAGCATTAAATAAGCAGACTGGCAGGCACCAAGCCTACAGGCCCTTGGGAACAGCCTTCTGAGCCA
GCATTTATTAGACTGCATTACCGTGTCTCCATGTCAAGTTCCTATTCCTATGGAATGTCTTGGGAAA
CATGAGGTGAGTCCACTACCATGCCATGCTGTAGGACCCTACTCTGTAAAAGAGTTTGTGGAAGAATC
TTGGATTGTGAGAATCACACATGTATGAAAGAATGCCACAAAGTAACCAAACTGATGGCTGCACTGGA
AAAAACAAGGCTGGCCAGAAATGCCTTCAATGTGAGGAAGGGTGTCCAAGTACAGGCCACTAGGTTGT
CTTACCCATGTATTTGCGATGTACCCTGGAGAATGTCCACCTTGTGTTGAGATGCTTAGAATAAAA
TGTCAGTGAAGATCACAAAGCTGTATGTGGAATGTAGAAAAATAACACAGCTGATGTAATGAAAAG
AACCTCCTCAGTTGTTGCAAAAATCAGTGCCCTAAAGAGCTTCTTGTGGTCAATAGATGCAAGAGATG
TGTCACTCTGGTGAATGTCCCTTAACTGCAACCAGAAGGTAAGTAACTTAGATGTCCTTGTAAAAGAATA
AAAAAGGAATTGCAAGTGAACAAAGTACGTGAAAATCAGGTTTCAATAGAATGTGACACAACGTGCAAG
GAAATGAAGCGGAAAGCATCTGAGATAAAAAGCAGAAAGCCAAAGCTGCTTGTGAAGAAGAAAAACGA
AGACAACAGGCTGAACTAGAAGCTTTTGAACAGACTGAAGGGTCGTCGGAAGAAGAACAGGAAAAAGA
GATGAAGTGGCAGTTGAGCTATCACTATGGCAAAAACATAAATATTATCTCATTTAGTGTGGAGTT
GTGTTTGTAGTGTGCTGGTACATCACCCATGATGTCAAT
ACGCGTACGCGGCCGCTCGAG - GFP Tag - GTTTAAAC
  
```

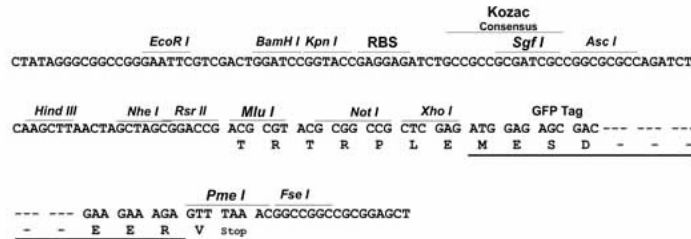
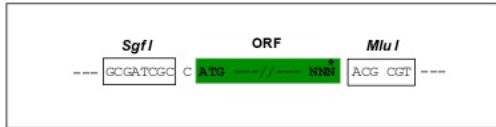
Protein Sequence: >Peptide sequence encoded by RG239770
 Blue=ORF Red=Cloning site Green=Tag(s)

MEASWRQVAGGRGRSRGRATAAPSGNGVHLRGAGGGRKGSVGVAVPSGTSPGGVATTAAGSRHSPAGS
 QALQTTAAELMSQKKFEEIKKANQAAARKLVEEQFSSSSEEGDEDFEGKQGKILANTFITYTQTDDG
 TRELERTKQYVNEAFQAGAMTCLICIASVKRNQAVWSCSGFCIFHMPCIQKWAKDSQFLVSSVTDDDF
 GKKDPCWPCKCRFEYKRSETPSRYYCYGKVEDPPLDPWLVPHSCGQVCEREFKPPCGHKLLCHPG
 PCPPCPKMVTTTTCYCKKAKPIPRRCSAKEWSCQLPCGQKLLCGQHKCENPCHAGSCQPCPRVSRQKVCV
 GKVAERSCASPLWHCDQVCGKTLPCGNHTCEQVCHVGACGECPRSGKRFPCQKSKFSLPCTEDVPTC
 GDSCDKVLECGIHRCSQRCHRGPCETCRQEVKHCRCGKHTKRMPCCHKPYL CETKCVKMRDCQKHQCR
 KCCPGNCPDQNGR TLGCRNHKCP SVCHRGSCYPCPETVDVKCNCGNTKVTVPCGRERTTRPPKCKE
 QCSRPTCHHTSQEKHRCHFGSCPPCHQPCQVLEKCGHLCPAPCHDQALIKQTRHQPTGPWEQSEP
 AFIQTALPCPPCQVPIPMECLGKHEVSPLPCHAVGYPYCKRVCGRILDCQNHTCMKECHKVTKTDGCTG
 KNKAGPECLHCEEKSKSRPLGCLHPCILRCHPGECPPCVQMLRIKCHCKITSLYVECRKITTADVNEK
 NLLSCCKNQCPKELPCGHRCKEMCHPGECPFNCNQVKLRCPCKRIKELQCNKVRENQVSI ECDTTC
 EMKRKASEIKEAEAKAAL EEEKRRQQAEL EAFENRLKGRRKKNRKRDEVAVELSLWQKHYYLISVCGV
 VVVVFAWYITHDVN
 TRTRPLEMESDESGLPAMEIECRITGTLNGVEFELVGGEGTPEQGRMTNKMSTKGALTFSPYLLSHV
 MGYGFYHFGTYPYSGYENPFLHAINNGGYNTRIEKYEDGGVLHVFSFYRYEAGRVIGDFKVMGTGFPED
 SVIFTDKIIRSNATVEHLHPMGDNDLDGSFTRTFSLRDGGYSSVVD SHMHFKSAIHP SILQNGGPMFA
 FRRVEEDHSNTELGIVEYQHAFKTPDADAGEERV

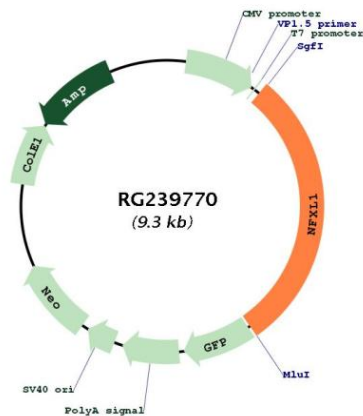
Restriction Sites: SgfI-MluI

Cloning Scheme:

Cloning sites used for ORF Shutting:



ACCN:	NM_001278624
ORF Size:	2733 bp
OTI Disclaimer:	The molecular sequence of this clone aligns with the gene accession number as a point of reference only. However, individual transcript sequences of the same gene can differ through naturally occurring variations (e.g. polymorphisms), each with its own valid existence. This clone is substantially in agreement with the reference, but a complete review of all prevailing variants is recommended prior to use. More info
OTI Annotation:	This clone was engineered to express the complete ORF with an expression tag. Expression varies depending on the nature of the gene.
Components:	The ORF clone is ion-exchange column purified and shipped in a 2D barcoded Matrix tube containing 10ug of transfection-ready, dried plasmid DNA (reconstitute with 100 ul of water).
RefSeq:	NM_001278624.2
RefSeq Size:	3861 bp
RefSeq ORF:	2736 bp
Locus ID:	152518
UniProt ID:	Q6ZNB6
Cytogenetics:	4p12
Protein Families:	Transcription Factors, Transmembrane
MW:	101.3 kDa

Product images:


Circular map for RG239770