

Product datasheet for **RG239769**

NFXL1 (NM_001278623) Human Tagged ORF Clone

Product data:

Product Type:	Expression Plasmids
Product Name:	NFXL1 (NM_001278623) Human Tagged ORF Clone
Tag:	TurboGFP
Symbol:	NFXL1
Synonyms:	CDZFP; HOZFP; OZFP; URCC5
Mammalian Cell Selection:	Neomycin
Vector:	pCMV6-AC-GFP (PS100010)
E. coli Selection:	Ampicillin (100 ug/mL)



[View online »](#)

ORF Nucleotide Sequence:

>RG239769 representing NM_001278623.
 Blue=ORF Red=Cloning site Green=Tag(s)

```

GCTCGTTTAGTGAACCGTCAGAATTTTGTAAACGACTCACTATAGGGCGGCCGGGAATTCGTGACTG
GATCCGGTACCGAGGAGATCTGCCGCCACGATCGCC
ATGGAAGCTTCTGGCGCCAGGTGGCCGGTGGCCGAGGCCGATCCCGGGGACGGGCCACTGCCGCCCC
TCAGGAAATGGAGTCCATCTCCGCGCCGCGGAGGAGGGCGAGAGAAGGGGTCGGTGGGCGCAGTTCCT
TCTGGCACCAAGTCCCGGAGGAGTCGCGACCCAGCGCGCTGCAGGAGCAGGCACAGCCCCGAGGATCC
CAAGCCCTGCAGACTACCGCAGCCAGCGAGCTAATGTCTCAGAAAAAATTTGAAGAAATCAAGAAAGCT
AACCAAGCTGCAGCCAGAAAACTTGTGAAGAACAGTTTGTCTTCTGAAGAAGGAGATGAAGAT
TTTGAAGGAAACAGGAAAAACTTGTGCAAAATACGTTTATAACATACACTACTCAGACAGATGGAGAT
ACACGTGAATTAGAGCGAACAAAACAATATGTAATGAAGCTTTTCAAGCAGGGGCTATGACATGCCTA
ATTTGTATTGCTTCGGTGAAGAGAAACCAAGCAGTTTGGAGCTGTTGGGATGTTTCTGTATATTTAC
ATGCCCTGTATCCAGAAGTGGGCTAAAGACAGCCAGTTTCTTGTATCTTCTGTGACTGATGATTTTT
GGAAAGAAAGATTGTCCCTGGCCTTGCCAAAATGTAGGTTTGAATACAAACGATCTGAAACACCTAGT
AGGTAATAATTGCTATTGTGGAAAAGTAGAAGATCCACCTTTAGATCCGTGGCTTGTGCCTATTCATGT
GGCCAAGTATGTGAGCGTGAATTTAAACCTCCTTGTGGCCATAAATGTTTACTCCTCTGTATCCAGGT
CCCTGCCCTCCTTGTCCAAAGATGGTCACAACTACTTGTACTGTAAAGAAAGCAAAACCTATCCCTCGT
AGGTGCAGTGCCAAGGAATGGTCTTGTGACAGTCCATGTGGACAGAAGTTGCTTTGTGGCAACATAAG
TGTGAAAATCCTTGTGATGCAGGAAGCTGTGACGCTTGTCCAAGAGTTAGTAGACAAAAGTGTGTCTGT
GGCAAAAAGTAGCTGAAAGAAGTTGTGCAAGTCCACTATGGCACTGTGATCAAGTATGTGAAAAACA
CTGCCATGTGGTAATCACACATGTGAGCAAGTTGCCATGTTGGTGTGTTGGAGAATGTCTCGATCT
GGAAAGGTTTGTCCATGTGCAAAATCAAAGTTTCTTGTGACAGAAGTGTACCAACTGTG
GGAGACAGTTGTGACAAAAGTACTTGAATGCGGAATCCATAGATGTTACAGCGTTGTACCGAGGTC
TGTGAAACATGTAGACAAGAAGTGGAAAAGCATTGTGCTGTGGAAGCATACAAAACGAATGCCTTGT
CATAAACCTTATCTGTGTGAAACTAAGTGTGTTAAGATGCGTACTGTGAGAAGCATCAATGTAGAAGA
AAGTGTGGCCCTGAAACTGTCCACCTTGTGATCAAACTGTGGACGGACTTTAGGATGTAGAAACCAT
AAGTGTCCATCTGTCTGTGACAGAGGCAGTTGCTATCCCTGCCAGAAACCGTAGATGTGAAGTGAAT
TGTGGCAATACAAAGGTGACAGTGCCTGTGGCCGAGAAGTACCACAAGACCACCAAGTGAAGGAG
CAATGCAGTCGACCACCAACTTGTATCATAACAAGTCAAGAAAAACATCGCTGTCACTTTGGTTCTTGT
CCACCATGTATCAACCTTGCCAAAAGTTTTGGAGAAATGTGGTCACTTGTGCTCTGCTCCGTGTCAT
GATCAAGCATTAAATAAGCAGACTGGCAGGCACCAAGCCTACAGGCCCTTGGGAACAGCCTTCTGAGCCA
GCATTTATTCAGACTGCATTACCGTGTCTCCATGTCAAGTTCCTATTCCTATGGAATGTCTTGGGAAA
CATGAGGTGAGTCCACTACCATGCCATGCTGTAGGACCCTACTCTGTAAAAGAGTTTGTGGAAGAATC
TTGGATTGTGAGAATCACACATGTATGAAAGAATGCCACAAAGTAAACAAAACCTGATGGCTGCACTGGA
AAAAACAAGGCTGGCCAGAAATGCCTTCAATGTGAGGAAGGGTGTCCAAGTACAGGCCACTAGGTTGT
CTTACCCATGTATTTGCGATGTACCCTGGAGAATGTCCACCTTGTGTTGAGATGCTTAGAATAAAA
TGTCACTGTAAGATCACAAAGCTGTATGTGGAATGTAGAAAAATAACACAGCTGATGTAATGAAAAG
AACCTCCTCAGTTGTTGCAAAAATCAGTGCCCTAAAGAGCTTCTTGTGGTCAATAGATGCAAGAGATG
TGTCACTCCTGGTGAATGTCCCTTAACTGCAACCAGAAGGTAAACTTAGATGTCTTGTAAAAGAATA
AAAAAGGAATTGCAAGTGAACAAAGTACGTGAAAATCAGGTTTCAATAGAATGTGACACAACGTGAAG
GAAATGAAGCGGAAAGCATCTGAGATAAAAAGCAGAAGCCAAAGCTGCTCTTGAAGAAGAAAAACGA
AGACAACAGGCTGAACTAGAAGCTTTTGA AACAGACTGAAGGGTCGTCGGAAGAAGAACAGGAAAAAG
GATGAAGTGGCAGTTGAGCTATCACTATGGCAAAAACATAAATATATCTCATTTCAAGTGTGAGGAT
GTGTTTGTAGTGTTCCTGGTACATCACCCATGATGTCAAT
ACGCGTACGCGGCCGCTCGAG - GFP Tag - GTTTAAAC
  
```

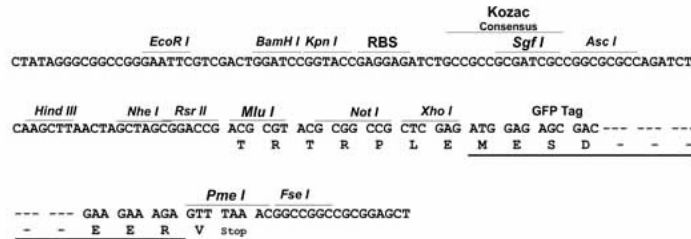
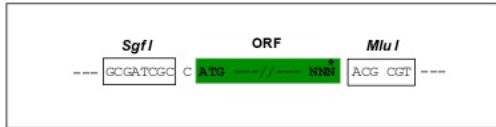
Protein Sequence: >Peptide sequence encoded by RG239769
 Blue=ORF Red=Cloning site Green=Tag(s)

MEASWRQVAGGRGRSRGRATAAPSGNGVHLRGAGGGREKGSVGVPSGTSPGGVATTAAGSRHSPAGS
 QALQTTAASELMQKKFEEIKKANQAAARKLVEEQFSSSSEEGDEDFEGKQGKILANTFITYTQTDDG
 TRELERTKQYVNEAFQAGAMTCLICIASVKRNQAVWSCSGCFIFHMPCIQKWAKDSQFLVSSVTDDDF
 GKKDCPWPCPKCRFEYKRSETPSRYYCYCGKVEDPPLDPWLVPHSCGQVCEREFKPPCGHKCLLLCHPG
 PCPPCPKMVTTTTCYCKKAKPIPRRCSAKEWSCQLPCGQKLLCGQHKCENPCHAGSCQPCPRVSRQKCV
 GKVAERSCASPLWHCDQVCGKTLPCGNHTCEQVCHVGACGECPRSGKRFPCQKSKFSLPCTEDVPTC
 GDSCDKVLECGIHRCSQRCHRGPCETCRQVEVEKHCRCGKHTKRMPCCHKPYL CETKCVKMRDCQKHQCR
 KCCPGNCPDQNGRTLGCNRNHCPSVCHRGSCYPCPETVDVKCNCGNTKVTVPCGRERTTRPPKCKE
 QCSRPTCHHTSQEKHRCHFGSCPPCHQPCQVLEKCGHLCAPACHDQALIKQTRHQPTGPWEQPSEP
 AFIQTALPCPCQVPIPMECLGKHEVSPLPCHAVGPYSCKRVCGRILDQNHCMKECHKVTKTDGCTG
 KNKAGPECLHCEEKSKSRPLGCLHPCILRCHPGCEPPCVQMLRIKCHCKITSLYVECRKITTADVNEK
 NLLSCCKNQCPKELPCGHRCKEMCHPGCEPFNCNQVKLRCPCKRIKELQCNKVRENQVSI ECDTTC
 EMKRKASEIKEAEAKAAL EEEKRRQQAEL EAFENRLKGRRKKNRKRDEVAVELSLWQKHYYLISVCGV
 VVVVFAWYITHDVN
 TRTRPLEMESDESGLPAMEIECRITGTLNGVEFELVGGEGTPEQGRMTNKMSTKGALTFSPYLLSHV
 MGYGFYHFGTYPSTYENPFLHAINNGGYNTRIEKYEDGGVLHVSFSYRYEAGRVIGDFKVMGTGFPED
 SVIFTDKIIRSNATVEHLHPMGDNDLDGSFTRTFSLRDGGYSSVVDSDSHMHFSAIHP SILQNGGPMFA
 FRRVEEDHSNTELGIVEYQHAFKTPDADAGEERV

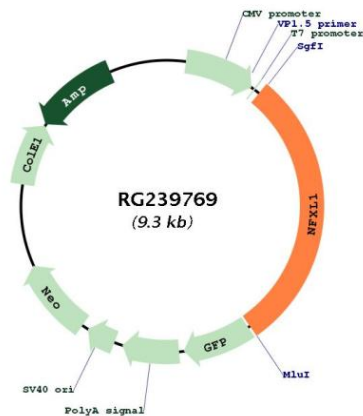
Restriction Sites: SgfI-MluI

Cloning Scheme:

Cloning sites used for ORF Shutting:



ACCN:	NM_001278623
ORF Size:	2733 bp
OTI Disclaimer:	The molecular sequence of this clone aligns with the gene accession number as a point of reference only. However, individual transcript sequences of the same gene can differ through naturally occurring variations (e.g. polymorphisms), each with its own valid existence. This clone is substantially in agreement with the reference, but a complete review of all prevailing variants is recommended prior to use. More info
OTI Annotation:	This clone was engineered to express the complete ORF with an expression tag. Expression varies depending on the nature of the gene.
Components:	The ORF clone is ion-exchange column purified and shipped in a 2D barcoded Matrix tube containing 10ug of transfection-ready, dried plasmid DNA (reconstitute with 100 ul of water).
RefSeq:	NM_001278623.1 , NP_001265552.1
RefSeq Size:	3723 bp
RefSeq ORF:	2736 bp
Locus ID:	152518
UniProt ID:	Q6ZNB6
Cytogenetics:	4p12
Protein Families:	Transcription Factors, Transmembrane
MW:	101.3 kDa

Product images:


Circular map for RG239769