

Product datasheet for **RG239761**

ADAM12 (NM_001288973) Human Tagged ORF Clone

Product data:

Product Type:	Expression Plasmids
Product Name:	ADAM12 (NM_001288973) Human Tagged ORF Clone
Tag:	TurboGFP
Symbol:	ADAM12
Synonyms:	ADAM12-OT1; CAR10; MCMP; MCMPMItna; MLTN; MLTNA
Mammalian Cell Selection:	Neomycin
Vector:	pCMV6-AC-GFP (PS100010)
E. coli Selection:	Ampicillin (100 ug/mL)



[View online »](#)

ORF Nucleotide Sequence:

>RG239761 representing NM_001288973.
 Blue=ORF Red=Cloning site Green=Tag(s)

```

GCTCGTTTAGTGAACCGTCAGAATTTTGTAAACGACTCACTATAGGGCGGCCGGGAATTCGTGACTG
GATCCGGTACCGAGGAGATCTGCCGCCCGCATCGCC
ATGGCAGCGCGCCCGCTGCCCGTGTCCCCGGCCCGCCCTCCTGCTCGCCCTGGCCGGTCTCTGCTC
GCGCCCTGCGAGGCCCGAGGGGTGAGCTTATGGAACCAAGGAAGAGCTGATGAAGTTGTGCTGCTCT
GTTGGGAGTGGGACCTCTGGATCCCAGTGAAGAGCTTCGACTCCAAGAATCATCCAGAAGTGTGAAT
ATTCGACTACAACGGAAAGCAAAGAAGTATCATAAATCTGAAAAGAAATGAAGGTCTCATTGCCAGC
AGTTTCACGAAACCCACTATCTGCAAGACGGTACTGATGTCTCCCTCGCTCGAAATTACACGGGTAC
TGTTACTACCATGGACATGTACGGGATATTCTGATTACAGCAGTCAGTCTCAGCACGTGTTCTGGTCTC
AGGGGACTTATTGTGTTGAAAATGAAAGCTATGTCTTAGAACCAATGAAAAGTGAACCAACAGATAC
AAACTCTCCAGCGAAGAAGCTGAAAAGCGTCCGGGGATCATGTGGATCACATCACAACACACCAAAC
CTCGCTGCAAAGAATGTGTTCCACCACCCTCTCAGACATGGGCAAGAAGGCATAAAAGAGAGACCCCTC
AAGGCAACTAAGTATGTGGAGCTGGTATCGTGGCAGACAACCGAGAGTTTCAGAGGCAAGGAAAAGAT
CTGAAAAAAGTTAAGCAGCGATTAATAGAGATTGCTAATCACGTTGACAAGTTTTACAGACCACTGAAC
ATTCGGATCGTGTGGTAGGCGTGAAGTGTGGAATGACATGGACAAATGCTCTGTAAGTCAGGACCCA
TTCACCAGCCTCCATGAATTTCTGGACTGGAGGAAGATGAAGCTTCTACCTCGAAATCCCATGACAAT
GCGCAGCTTGTGAGTGGGTTTATTTCCAAGGGACCACCATCGGCATGGCCCAATCATGAGCATGTGC
ACGGCAGACCAGTCTGGGGGAATGTGATGGACCATTACAGACAATCCCCTTGGTGCAGCCGTGACCCCTG
GCATGAGCTGGGCCACAATTCGGGATGAATCATGACACACTGGACAGGGGCTGTAGCTGTCAAATG
GCGGTTGAGAAAGGAGGCTGCATCATGAACGCTCCACCGGTACCCATTTCCATGGTGTTCAGCAGT
TGCAGGAAGGACTTGGAGACCACCTGGAGAAAGGAATGGGGTGTGCTGTTTAACTGCCGGAA
GTCAGGGAGTCTTTCGGGGGCCAGAAGTGTGGAAACAGATTTGTGGAAGAAGGAGAGAGTGTGACTGT
GGGGAGCCAGAGGAATGTATGAATCGCTGCTGCAATGCCACCACCTGTACCCTGAAGCCGGACGCTGTG
TGCGCACATGGGCTGTGCTGTGAAGACTGCCAGCTGAAGCCTGCAGAACAGCGTGCAGGGACTCCAGC
AACTCCTGTGACCTCCAGAGTTCTGCACAGGGGCCAGCCCTCACTGCCAGCCAACGTGTACCTGCAC
GATGGGCACTCATGTGAGGATGTGGACGGCTACTGCTACAATGGCATCTGCCAGACTCACGAGCAGCAG
TGTGTACGCTCTGGGGACCAGGTGCTAAACCTGCCCTGGGATCTGCTTTGAGAGAGTCAATTCTGCA
GGTATCCTTATGGCAACTGTGGCAAAGTCTCGAAGAGTTCCTTTGCCAAATGCGAGATGAGAGATGCT
AAATGTGAAAAATCCAGTGTCAAGGAGGTGCCAGCCGGCCAGTCATTGGTACCAATGCCGTTTCCATA
GAAACAAACATCCCCCTGCAGCAAGGAGGCCGGATTCTGTGCCGGGGACCCACGTGTACTTGGGGCAT
GACATGCCGGACCCAGGGCTTGTGCTTGCAGGCACAAAGTGTGCAGATGGAAAAATCTGCCTGAATCGT
CAATGTCAAAATATTAGTGTCTTTGGGTTTACAGAGTGTGCAATGCAGTGCACGGCAGAGGGGTGTGC
AACACAGGAAGAAGTGCCTGCGAGGGCCACTGGGCACCTCCCTTCTGTGACAAGTTTGGCTTTGGA
GGAAGCACAGACAGCGGCCCATCCGGCAAGCAGATAACCAAGTTTAAACATAGGAATTCTGGTGACC
ATCCTGTGTCTTCTGCTGCCGATTTGTGTTTATCTCAAAGGAAGACCTTGATACGACTGCTGTTT
ACAATAAGAAGACCACCATGAAAACTAAGGTGTGTGCGCCCTTCCCGGCCACCCGTGGCTTCCAA
CCCTGTGAGGCTCACCTCGGCCACCTTGGAAAAGCCCTGATGAGGAAGCCGCCAGATTCTACCCACCG
AAGGACAATCCCAGGAGATTGCTGCAGTGTGAGAATGTTGACATCAGCAGACCCCTCAACGCGCTGAAT
GTCCCTCAGCCCCAGTCAACTCAGCGAGTGTCTCCTCCCTCCACCGGGTCCACGTGCACCTAGCGTC
CCTGCCAGACCCCTGCCAGCAAGCCTGCACCTTAGGCAGGCCAGGGGACCTGTAAGCCAAACCCCTT
CAGAAGCCTCTGCCTGCAGATCCTCTGGCCAGAACAACTCGGCTCACTCATGCCTTGGCCAGGACCCCA
GGACAATGGGAGACTGGGCTCCGCTGGCACCCCTCAGACCTGCTCCACAATATCCACCAAGTGCCC
AGATCCACCCACACCGCCTATATTAAG
ACGCGTACGCGGCCGCTCGAG – GFP Tag – GTTTAAAC
  
```

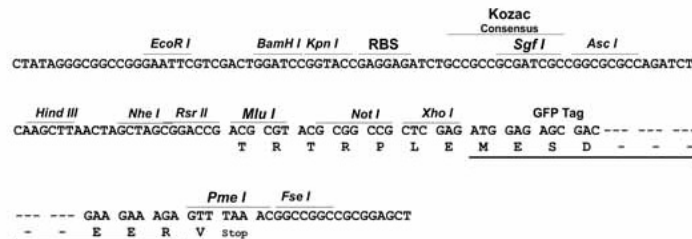
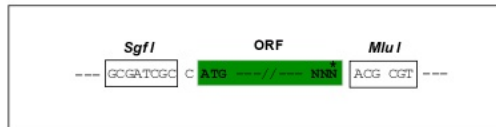
Protein Sequence: >Peptide sequence encoded by RG239761
 Blue=ORF Red=Cloning site Green=Tag(s)

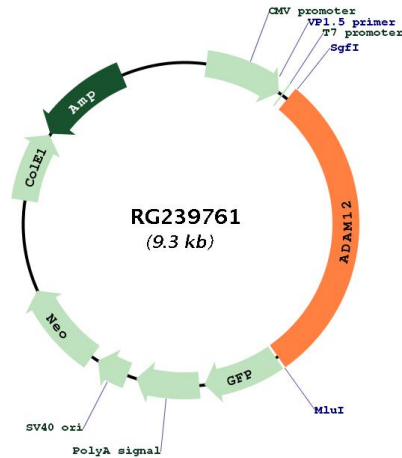
MAARPLVSPARALLLAGALLAPCEARGVSLWNQGRADEVVSASVSGDLWIPVKSFDSKNHPEVLN
 IRLQRESKELIINLERNEGLIASSFTETHYLQDGTDVSLARNYTGHCYYHGHVGRGYSVASLSTCSGL
 RGLIVFENESYVLEPMKSATNRYKLFPAKLLKSVRGSCGSHHNTPLAAKNVFPSPQTWARRHKRETL
 KATKYVELVIVADNREFQRQGDLEKVKQRLIEIANHVDFYRPLNIRIVLVGVEVWMDKCSVSQDP
 FTSLHEFLDWRKMKLLPRKSHDNAQLVSGVYFQGTITIGMAPIMSMCTADQSGGI VMDHSDNPLGAAVTL
 AHELGHNFGMNHDTLDRGCSCQMAVEKGGCIMNASTGYPFPMVFSSCSRKDLETSLEKGMVCLFNLPE
 VRESFGGQKCGNRFVEEGEECDCEPEECMNRCCNATTCTLKPDAVCAHGLCCEDCQLKPAGTACRDSS
 NSCDLPEFCTGASPHCPANVYLHDGHSCQVDVGYCYNGICQTHEQQCVTLWPGAKPAGICFERVNSA
 GDPYGNCGKVKSSFAKCEMRDAKCGKIQCGGASRPVIGTNAVSIETNIPLQGGRI LCRGTHVYLG
 DMPDPGLVLAGTKCADGKICLNRQCQNI SVFGVHECAMQCHGRGVCNNRKNCHCEAHWAPPFCDFGFG
 GSTDSGPIRQADNQGLTIGILVTILCLLAAGFVVYLKTKLIRLLFTNKKTTIEKLCRVRSRPPRGFQ
 PCQAHLGHLGKLMRPPDSYPPKDNPRLLQCQNVDISRPLNGLNVPQPQSTQRVLPPLHRAPRAPS
 PARPLPAKALRQAQGTCKPNPPQKPLPADPLARTTRLTHALARTPGQWETGLRLAPLRAPQYPHQVP
 RSTHTAYIK
 TRTRPLEMESDESGLPAMEIECRITGTLNGVEFELVGGEGTPEQGRMTNKMSTKGALTFSPYLLSHV
 MGYGFYHFGTYPSTYENPFLHAINNGGYNTRIEKYEDGGVLHVSFSYRYEAGRVIGDFKVMGTGFPE
 SVIFTDKIIRS NATVEHLHPMGDNDLDGSFTRTFSLRDGGYSSVVD SHMHFSAIHP SILQNGGPMFA
 FRRVEEDHSNTELGIVEYQHAFKTPDADAGEERV

Restriction Sites: SgfI-MluI

Cloning Scheme:

Cloning sites used for ORF Shutting:



Plasmid Map:


ACCN:	NM_001288973
ORF Size:	2718 bp
OTI Disclaimer:	The molecular sequence of this clone aligns with the gene accession number as a point of reference only. However, individual transcript sequences of the same gene can differ through naturally occurring variations (e.g. polymorphisms), each with its own valid existence. This clone is substantially in agreement with the reference, but a complete review of all prevailing variants is recommended prior to use. More info
OTI Annotation:	This clone was engineered to express the complete ORF with an expression tag. Expression varies depending on the nature of the gene.
Components:	The ORF clone is ion-exchange column purified and shipped in a 2D barcoded Matrix tube containing 10ug of transfection-ready, dried plasmid DNA (reconstitute with 100 ul of water).
RefSeq:	NM_001288973.2
RefSeq Size:	8041 bp
RefSeq ORF:	2721 bp
Locus ID:	8038
Cytogenetics:	10q26.2
Protein Families:	Druggable Genome, Protease, Secreted Protein, Transmembrane
MW:	99.7 kDa

Gene Summary:

This gene encodes a member of a family of proteins that are structurally related to snake venom disintegrins and have been implicated in a variety of biological processes involving cell-cell and cell-matrix interactions, including fertilization, muscle development, and neurogenesis. Expression of this gene has been used as a maternal serum marker for pre-natal development. Alternative splicing results in multiple transcript variants encoding different isoforms. Shorter isoforms are secreted, while longer isoforms are membrane-bound form. [provided by RefSeq, Jan 2014]