

## Product datasheet for **RG239760**

### PELP1 (NM\_001278241) Human Tagged ORF Clone

#### Product data:

Product Type:	Expression Plasmids
Product Name:	PELP1 (NM_001278241) Human Tagged ORF Clone
Tag:	TurboGFP
Symbol:	PELP1
Synonyms:	MNAR; P160
Mammalian Cell Selection:	Neomycin
Vector:	pCMV6-AC-GFP (PS100010)
E. coli Selection:	Ampicillin (100 ug/mL)



[View online »](#)

ORF Nucleotide  
Sequence:

>RG239760 representing NM\_001278241.  
Blue=ORF Red=Cloning site Green=Tag(s)

```
GCTCGTTTAGTGAACCGTCAGAATTTTGTAAACGACTCACTATAGGGCGGCCGGGAATTCGTGACTG
GATCCGGTACCGAGGAGATCTGCCGCCACGATCGCC
ATGGAGCTGGCCGTGGCTGTCTGAGGGACCTCCTCCGATATGCAGCCCAGCTGCCTGCACTGTTCCGG
GACATCTCCATGAACCACCTCCCTGGCCTTCTCACCTCCCTGCTGGGCCCTCAGGCCAGAGTGTAGCAG
TCAGCATTGGAAGGAATGAAGGCTTGTATGACCTATTTCCCTCGGCTTGTGTTCTCTCAAAGGAAG
CTGGCCTCATTTTTCTGTCTAGGGTGGATGCCTTGAACCTCAGCTCCAACAGTTGGCCTGTGAGTGT
TATTCCCGGCTGCCCTCTTAGGGGCTGGCTTTTCCCAAGGCCTGAAGCACACCGAGAGCTGGGAGCAG
GAGCTACACAGTCTGCTGGCCTCACTGCACACCCTGCTGGGGCCCTGTACGAGGGAGCAGAGACTGCT
CCTGTGCAGAATGAAGGCCCTGGGGTGGAGATGCTGCTGTCTCAGAAGATGGTGTGCCATGTCCTT
CTCCAGCTTCGGCAGAGGTTTTCGGGACTGGCCCGCTGCCTAGGGCTCATGCTCAGCTCTGAGTTTGA
GCTCCCGTGTCCGTCCCTGTGCAGGAAATCCTGGATTTTCTGCGGACCCCTCAGCGTCAGTAGCAAG
AATATTAGCTTGCATGGAGATGGTCCCTGCGGCTGCTGCTGCCCTCTATCCACCTTGAGGCCCTTG
GACCTGCTGTCTGCACTCATCTCGCGTGTGGAAGCCGGCTCTTGCCTTTGGGATCCTGATCGGCCGC
CTGCTTCCCAGGTCCTCAATTCCTGGAGCATCGGTAGAGATTCCCTCTCTCCAGGCCAGGAGAGCCCT
TACAGCACGGTTCGGACCAAGGTGTATGCGATATTAGAGCTGTGGGTGCAGGTTTGTGGGCCCTCGGCG
GGAATGCTTCAGGGAGGAGCCTCTGGAGAGGCCCTGCTCACCCACCTGCTCAGCGACATCTCCCCGCCA
GCTGATGCCCTTAAGCTGCGTAGCCCGCGGGGAGCCCTGATGGGAGTTTGCAGACTGGGAAGCCTAGC
GCCCCAAGAAGCTAAAGCTGGATGTGGGGGAAGCTATGGCCCCGCCAAGCCACCGGAAAGGGGATAGC
AATGCCAACAGCGACGTGTGCGGCTGCACTCAGAGCCCTCAGCCGACCATCCTCATGTGTGGCCCT
TCATCAAGGAGGAGACTCACAGGAGACTGCATGACCTGGTCTCCCCCTGGTCAATGGGTACAGCAG
GGTGAGGTCCTAGGCAGCTCCCCGTACACGAGCTCCCGCTGCCGCGTGAACCTCTACTGCCTGTGCTG
GCGCTGCTGCTGGCCCGCTCTCCTGCTGCCACCTCCTCTTGCCTGTGCCCTGCAAGCCTTCTCCCTC
GGCCAGCGAGAAGATAGCCTTGAGGTCTCTTCTGCTCAGAAGCACTGGTGACCTGTGCTGCTGCTG
ACCCACCCCGGGTTCTCCCCTGCAGCCCATGGGCCCCACCTGCCCCACACCTGCTCCAGTTCCCCCT
CCTGAGGCCCATCGCCCTTTCAGGGCCCCACCGTTCCATCCTCCGGGCCCATGCCCTCAGTGGGCTCC
ATGCCCTCAGCAGGCCCATGCCTTTCAGCAGGCCCATGCCCTCAGCAGGCCCTGTGCCCTCGGCACGC
CCTGGACCTCCCACCACAGCCAACCACCTAGGCCTTTCTGTCCAGGCCCTAGTGTCTGTCCCTCCCCGG
CTTCTTCTGGCCCTGAGAACCACCGGGCAGGCTCAAATGAGGACCCCATCCTTGCCCTAGTGGGACT
CCCCACCTACTATACCCCCAGATGAAACTTTTGGGGGAGAGTGCCAGACCAGCCTTTGTCCACTAT
GACAAGGAGGAGGCATCTGATGTGGAGATCTCCTTGAAAAGTGACTCTGATGACAGCGTGGTGTGCTG
CCCGAGGGGCTTCCCCCCTGCCACCCCAACCACCTCAGGTGCCACACCACCCCTATAGCCCCACT
GGGCCACCAACAGCCTCCCCTCTGTGCCAGCGAAGGAGGAGCCTGAAGAAGTTCTGCAGCCCCAGGG
CCTCTCCCGCCACCCCACTCCGCCCGCCCTGTTCTTGGTCTGTGACGCTCCCTCCACCCAGTTG
GTCCCTGAAGGGACTCCTGGTGGGGGAGGACCCCAAGCCTGGAAGAGGATTTGACAGTTATTAATATC
AACAGCAGTGATGAAGAGGAGGAGGAAGAGGAAGAAGAGGAAGAAGAAGAAGAGGAAGAAGAGGAAGAG
GAGGAAGACTTTGAGGAAGAGGAAGAGGATGAAGAGGAATATTTTGAAGAGGAAGAAGAGGAGGAAGAA
GAGTTTGAAGGAAGAAATTTGAGGAAGAAGAAGGTGAGTTAGAGGAAGAAGAAGAAGAGGAGGATGAGGAG
GAGGAAGAAGAACTGGAAGAGGTGGAGAGGGAAGGGGAAAGCCCTGCGGCAGGGCCCCCTCCCAGGAG
CTTGTTGAAGAAGAGCCCTCTGCTCCCCAACCCCTGTTGGAAGAGGAGACTGAGGATGGGAGTGACAAG
GTGCAGCCCCCACCAGAGACACCTGCAGAAGAAGAGATGGAGACAGAGACAGAGGCCGAAGCTCTCCAG
GAAAAGGAGCAGGATGACACAGCTGCCATGCTGGCCGACTTCATCGATTGCCCCCTGATGATGAGAAG
CCACCACCTCCCACAGAGCTGACTCC
ACGCGTACGCGGCCGCTCGAG – GFP Tag – GTTTAAAC
```

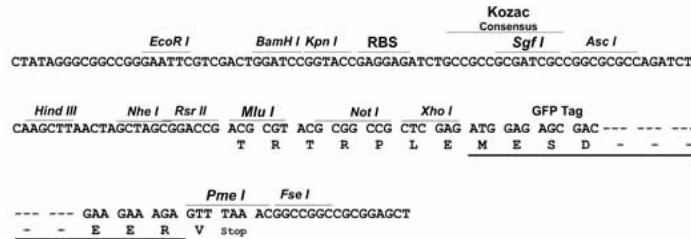
Protein Sequence: >Peptide sequence encoded by RG239760  
 Blue=ORF Red=Cloning site Green=Tag(s)

MELAVAVLRDLLRYAAQLPALFRDISMNHLPGLLTSLGLRPECEQSALEGMKACMTYFPRACGSLKKG  
 LASFFLSRVDALSPQLQLACECYSRPSLGAGFSQGLKHTEWEQELHSLLASLHTLLGALYEGAETA  
 PVQNEGPGVEMLLSSEDGAHVLLQLRQRFSGLARCLGLMLSSEFGAPVSVPVQIILDFICRTLVSYSK  
 NISLHGDGPLRLLLLPSIHLEALDLLSALILACGSRLRFGILIGRLLPQVLNSWSIGRDSLSPGQERP  
 YSTVVRTKYVYAIILELWVQVCGASAGMLQGGASGEALLTHLLSDISPPADALKLRSPRGSPDGLQTGKPS  
 APKKLKLVDVGEAMAPPSHRKGSNANSVDCAAALRGLSRTILMCGPLIKEETHRRHLHDLVLPVMGVQQ  
 GEVLGSSPYTSSRCRRELYCLLLALLLAPSPRCPPLACALQAFSLGQREDSLEVSSFCSEALVTCAAL  
 THPRVPLQPMGPTCPTAPVPPPEAPSPFRAPPFHPPGMPMSVGSMPMSAGPMPMSAGPVPMSAR  
 PGPPTTANHLGLSVPGLVSVPPRLPGPENHRAGSNEDPILAPSGTTPPTIPPDETFGGRVPRPAFVHY  
 DKEEASDVEISLESDDSVVIVPEGLPPLPPPPSGATPPPIAPTGPPTASPPVPAKEEPEELPAAPG  
 PLPPPPPPPPVPGPVTLPQPQLVPEGTPGGGGPPALEEDLTVININSSDEEEEEEEEEEEEEEEEE  
 EEDFEEEEEEYEEEEEEEEEEEEEEEEEGELEEEEEEEDEEEEELEEVEREGESPAAGPPPQE  
 LVEEESAPPTLLEETEDGSDKVQPPETPAEEEMETE TEAEALQEKEQDDTAAMLADFDICPPDDEK  
 PPPTEPDS  
 TRTRPLEMESDESGLPAMEIECRITGTLNGVEFELVGGEGTPEQGRMTNKMSTKGALTFSPYLLSHV  
 MGYGFYHFGTYPSTYENPFLHAINNGGYNTRIEKYEDGGVLHVSFSYRYEAGRVIGDFKVMGTGFPED  
 SVIFTDKIIRSNATVEHLHPMGDNDLDGSFTRTFSLRDGGYSSVVDSDSHMHFKSAIHPSILQNGGPMFA  
 FRRVEEDHSNTELGIVEYQHAFKTPDADAGEERV

Restriction Sites: Sgfl-MluI

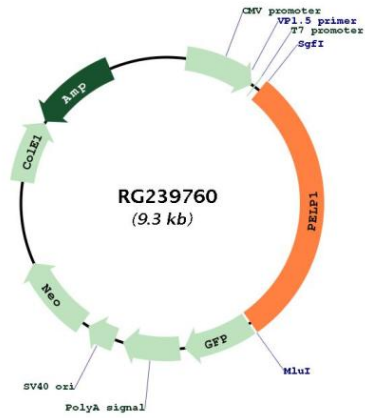
Cloning Scheme:

Cloning sites used for ORF Shutting:



<b>ACCN:</b>	NM_001278241
<b>ORF Size:</b>	2718 bp
<b>OTI Disclaimer:</b>	The molecular sequence of this clone aligns with the gene accession number as a point of reference only. However, individual transcript sequences of the same gene can differ through naturally occurring variations (e.g. polymorphisms), each with its own valid existence. This clone is substantially in agreement with the reference, but a complete review of all prevailing variants is recommended prior to use. <a href="#">More info</a>
<b>OTI Annotation:</b>	This clone was engineered to express the complete ORF with an expression tag. Expression varies depending on the nature of the gene.
<b>Components:</b>	The ORF clone is ion-exchange column purified and shipped in a 2D barcoded Matrix tube containing 10ug of transfection-ready, dried plasmid DNA (reconstitute with 100 ul of water).
<b>RefSeq:</b>	<a href="#">NM_001278241.2</a>
<b>RefSeq Size:</b>	3539 bp
<b>RefSeq ORF:</b>	2721 bp
<b>Locus ID:</b>	27043
<b>UniProt ID:</b>	<a href="#">Q8IZL8</a>
<b>Cytogenetics:</b>	17p13.2
<b>Protein Families:</b>	Druggable Genome, Stem cell - Pluripotency
<b>MW:</b>	97.4 kDa
<b>Gene Summary:</b>	This gene encodes a transcription factor which coactivates transcription of estrogen receptor responsive genes and corepresses genes activated by other hormone receptors or sequence-specific transcription factors. Expression of this gene is regulated by both members of the estrogen receptor family. This gene may be involved in the progression of several types of cancer. Alternative splicing results in multiple transcript variants. [provided by RefSeq, May 2013]

Product images:



Circular map for RG239760