

Product datasheet for **RG239755**

SYTL2 (NM_001289608) Human Tagged ORF Clone

Product data:

Product Type:	Expression Plasmids
Product Name:	SYTL2 (NM_001289608) Human Tagged ORF Clone
Tag:	TurboGFP
Symbol:	SYTL2
Synonyms:	CHR11SYT; EXO4; PPP1R151; SGA72M; SLP2; SLP2A
Mammalian Cell Selection:	Neomycin
Vector:	pCMV6-AC-GFP (PS100010)
E. coli Selection:	Ampicillin (100 ug/mL)



[View online »](#)

ORF Nucleotide Sequence:

>RG239755 representing NM_001289608.
 Blue=ORF Red=Cloning site Green=Tag(s)

```
GCTCGTTTAGTGAACCGTCAGAATTTTGTAAACGACTCACTATAGGGCGGCCGGGAATTCGTGCGACTG
GATCCGGTACCGAGGAGATCTGCCGCCCGGATCGCC
ATGAGTGGCCAATGGTTTTATGAAGCCAAGGCCAAAAAGGCACAGGGACAAAAATCCATGGCGCAGATATC
ATCAGAGCATCTATGAGAAAGAAGAGGCCCCAGATAGCAGCTGAGCAGAGTAAAGACAGAGAAAAATGGG
GCAAAGGAAAGCTGGGTGAATAATGTCAACAAAGATGCTTTCCTCCTCCAGAGCTGGCTGGCGTTGTA
GAAGAGCCAGAAGAAGATGCAGCACCCAGCAAGCCCGAGTTCAGTGTGGTAAATCCAGCTTCCAGTGTG
ATTGATATGTCCCAGGAAAAACAAGGAAACCAATGTGTCTCCAGAGAAGAGGAAGAATCCGTTTAAAT
AGCTCCAAGTTGCCAGAAGGTCCTCATCAACAACAACTAAAAATGAACAGTCAAAAAATGGAAGAAGT
GGTTTATTTAGACTTCAAAAGAGGATGAATTGTCAGAGTCAAAAGAAAAGTCAACTGTCGCAGATACT
TCAATCCAAAAGTTAGAGAAATCAAAGCAGACTTTGCCAGGCCTTCAAATGGTCCCAAATCAAGGCT
CCAATCCCAAAGCCAGGAAGATGATCTACAAATCAACTGATTTAAACAAAGATGATAACCAGTCTTTT
CCTAGACAAAGGACAGACTCCCTGAAAGCGAGAGGGGCTCCGAGAGGGATCCTCAAGCGCAACTCCAGT
TCCAGTAGCACAGACTCAGAAACCTTCGTTATAATCACAACTTTGAACCCAAAAGCAAAATTTGTGTCA
CCTGGCCTAACCATCCATGAGAGAATTTCTGAGAAGGAGCATTCTTTAGAAGACAACCTTCCCCAAAC
TCCTGGAGCCATTAAAGCATGTGAGATTCTCTGCAGTGAAGGATGAGCTTCCACAGAGTCTGGGCTA
ATCCATGGTGGGAAGTAGGAGAATTTAGTGTTTTAGAACTCTGACAGATTGAAAAATGGAATGGAAGAT
GCAGGGGACACAGAAGAGTTTCAGAGTGACCCTAAGCCTTCTCAATACAGAAAGCCTTCGCTTTTTTCAT
CAATCAACCTCAAGCCCATATGTATCAAAAAGTGAACACATCAGCCAATGACTTCTGGTCTTTTCCA
ATTAATGGGCTGCATTCTCATTGAGAAGTTTTAACTGCAAGACCACAGTCTATGGAGAATCACCAACC
ATCAATGAACCCAAAGATAAATCATCAGAATTAACAAGGCTTGAATCTGTATTACCCAGAAGCCCTGCT
GATGAACCTGTCTCATTGTGTTGAGCCTGAGCCATCTCAGGTGCCAGGTGGCAGTTCTAGAGACCCAG
CAAGGTTGAGAAGAAGAACCCAGTCTGTTTTGAAAACCTTTGAAAAGGAGTGCCGCTAGGAAAATGCCT
TCCAAAAGTCTAGAAGACATTTTCATCAGATTCATCAAATCAAGCAAAAAGTAGATAATCAGCCAGAAGAA
TTAGTGCAGTGTGCTGAAGATGATGAGAAACCAGATCAGAAGCCAGTTACAAATGAATGCGTACCAAGA
ATTTCCACAGTGCCTACACAACCTGATAATCCATTTTCTACCCTGACAAAACAAAAGGATGAGCAAG
TCTGTTCCAGCATTCTCCAAGATGAGAGTGATGACAGAGAAACAGATACAGCATCAGAAAGCAGTTAC
CAGCTCAGCAGACACAAGAAGAGCCGAGCTCTTAACCAATCTTAGCAGCTCCTCTGCCATGACGTCC
TTGCTTCTGTGAGTGGCAGTGTGATGAGTGTATAGTGGAGACTTTGGCAATCTGGAAGTTAAAGGA
AATATTAGTTTGAATATGTGGAGTCACTGAAGGAGTTGCATGTTTTTGTGGCCAGTGTAAAG
GACTTAGCAGCAGCGGATGTAAAAAACAGCGTTAGACCCATATGTAAGGCCTATTTGCTACCAGAC
AAAGGCCAAAATGGGCAAGAAGAAAAACCTCGTAGTGAAGAAAACCTTGAATCCTGTGTATAACGAAATA
CTGCGGTATAAAATTGAAAAACAAATCTTAAAGACACAGAAAATGAACCTGTCCATTTGGCATCGGGAT
ACATTTAAGCGCAATAGTTTCTAGGGGAGGTGGAACCTGATTTGGAAACATGGGACTGGGATAACAAA
CAGAATAAACAATTGAGATGGTACCCTCTGAAGCGGAAGACAGCACCAGTTGCCCTTGAAGCAGAAAAAC
AGAGGTGAAATGAAACTAGCTCTCCAGTATGTCCAGAGCCAGTCCCTGGTAAAAAGCTTCTACAAC
GGAGAAGTGCACATCTGGGTGAAGGAATGCCTTGATCTACCACTGCTAAGGGGAAGTCACTAAATTCT
TTTGTTAAATGTACCATCCTTCCAGATACAAGTAGGAAAAGTCGCCAGAAGACAAGAGCTGTAGGGAAA
ACCACCAACCCTATCTTCAACCACACTATGGTGTATGATGGGTTGAGGCTGAAGATCTGATGGAAGCC
TGTGTAGAGCTTACTGTCTGGGACCATTACAAATTAACCAACCAATTTTGGGAGGTCTTCGATTGGC
TTTGGAACAGGTAAAAGTTATGGGACTGAAGTGGACTGGATGGACTCTACTTCAGAGGAAGTTGCTCTC
TGGGAGAAGATGGTAAACTCCCCAATACTTGGATTGAAGCAACACTGCCTCTCAGAAATGCTTTTGATT
GCCAAGATTTCCAAA
ACGCGTACGCGGCCGCTCGAG – GFP Tag – GTTTAAAC
```

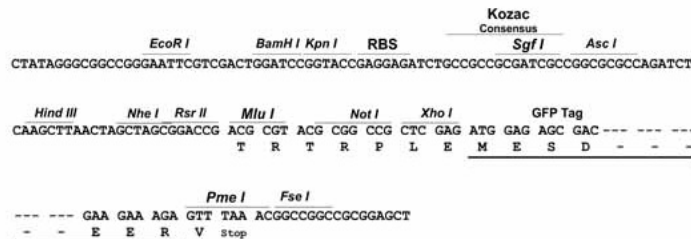
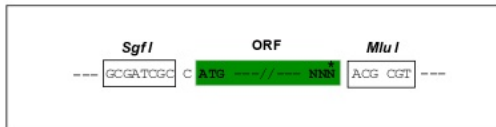
Protein Sequence: >Peptide sequence encoded by RG239755
 Blue=ORF Red=Cloning site Green=Tag(s)

MSGQWFYEAKAKRHRDKIHGADIIRASMRKKRPQIAAEQSKDRENGAKESWVNNVKNDAFLPPELAGVV
 EEPEEDAAPASPSVVNPASSVIDMSQENTRKNPNVSPEKRKNPFNSSKLEPEGHSSQQTKNEQSKNGRT
 GLFQTSKEDELSEKSTVADTSIQKLEKSKQTLPLSNGSQIKAPIPKARKMIYKSTDLNKDDNQSF
 PRQRTDSLKARGAPRGILKRNSSSSSTDETLRYNHNFEPKSKI VSPGLTIHERISEKEHSLEDNSSPN
 SLEPLKHVRFSAVKDEL PQSPGLIHGREVGEFVLESDRLKNGMEDAGDTEEFQSDPKPSQYRKPSLFH
 QSTSSPYYSKSETHQPM TSGSFFINGLHSHSEVL TARPQSMENSP TINEPKDKSSEL TRLESVLP RSPA
 DELSHCVEPEPSQVPGGSSRDRQQGSEEEPSPVLKTLERSAARKMPSKSLEDISSDSSNQAKVDNQPEE
 LVRS AEDDEKPDQKPV TNECVPRISTVPTQPDNPF SHPKLKRMSKSVPAFLQDESDDRETDTASESSY
 QLSRHKKSPSSL TNLSSSGMTLSVSVSGSVMSVYSGDFGNLEVKGNIQFAIEYVESL KELHVFVAQCK
 DLA AADVKKQRSDPYVKAYLLPDKGKMGKKKTLVVKKTLNPVYNEILRYKIEKQILKTQKLNLSIWHRD
 TFKRNSFLGEVELDLETWDWKNQNKQLRWYPLKRKTAPVALEAENRGENKLLALQYVPEPVGKKLPTT
 GEVHIWVKECLDLPLLRGSHLNSFVKCTILPDTSRKSRQKTRAVGKTTNPIFNHTMVYDGFREPDLMEA
 CVELTVWDHYKLTNQFLGGLRIGFGTGKSYGTEVDWMDSTSEEVALWEKMNPNPTWIEATLPLRMLLI
 AKISK
 TRTRPLEMESDESGLPAMEIECRITGTLNGVEFELVGGEGTPEQGRMTNKMSTKGALTFSPYLLSHV
 MGYGFYHFGTYPSTYENPFLHAINNGGYNTRIEKYEDGGVLHVSFSYRYEAGRVIGDFKVMGTGFPEP
 SVIFTDKIIRSNATVEHLHPMGDNDLDGSFTRTFSLRDGGYSSVVD SHMHFKA IHP SILQNGGPMFA
 FRRVEEDHSNTELGIVEYQHAFKTPDADAGEERV

Restriction Sites: SgfI-MluI

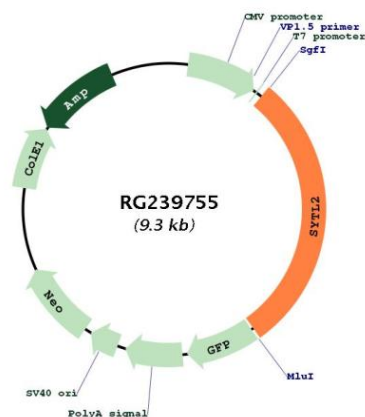
Cloning Scheme:

Cloning sites used for ORF Shutting:



ACCN:	NM_001289608
ORF Size:	2706 bp
OTI Disclaimer:	The molecular sequence of this clone aligns with the gene accession number as a point of reference only. However, individual transcript sequences of the same gene can differ through naturally occurring variations (e.g. polymorphisms), each with its own valid existence. This clone is substantially in agreement with the reference, but a complete review of all prevailing variants is recommended prior to use. More info
OTI Annotation:	This clone was engineered to express the complete ORF with an expression tag. Expression varies depending on the nature of the gene.
Components:	The ORF clone is ion-exchange column purified and shipped in a 2D barcoded Matrix tube containing 10ug of transfection-ready, dried plasmid DNA (reconstitute with 100 ul of water).
RefSeq:	NM_001289608.1 , NP_001276537.1
RefSeq Size:	3951 bp
RefSeq ORF:	2709 bp
Locus ID:	54843
UniProt ID:	Q9HCH5
Cytogenetics:	11q14.1
MW:	101.5 kDa
Gene Summary:	The protein encoded by this gene is a synaptotagmin-like protein (SLP) that belongs to a C2 domain-containing protein family. The SLP homology domain (SHD) of this protein has been shown to specifically bind the GTP-bound form of Ras-related protein Rab-27A (RAB27A). This protein plays a role in RAB27A-dependent vesicle trafficking and controls melanosome distribution in the cell periphery. Alternative splicing results in multiple transcript variants encoding distinct isoforms.[provided by RefSeq, Jun 2009]

Product images:



Circular map for RG239755

