

Product datasheet for **RG239748**

ACTN2 (NM_001278343) Human Tagged ORF Clone

Product data:

Product Type:	Expression Plasmids
Product Name:	ACTN2 (NM_001278343) Human Tagged ORF Clone
Tag:	TurboGFP
Symbol:	ACTN2
Synonyms:	CMD1AA; CMH23; MPD6; MYOCOZ
Mammalian Cell Selection:	Neomycin
Vector:	pCMV6-AC-GFP (PS100010)
E. coli Selection:	Ampicillin (100 ug/mL)



[View online »](#)

ORF Nucleotide Sequence:

>RG239748 representing NM_001278343.
 Blue=ORF Red=Cloning site Green=Tag(s)

```
GCTCGTTTAGTGAACCGTCAGAATTTTGTAAACGACTCACTATAGGGCGGCCGGGAATTCGTGACTG
GATCCGGTACCGAGGAGATCTGCCGCCCGGATCGCC
ATGAACCAGATAGAGCCCGCGTGCAGTACAACACTCGTGTACGACGAGGATGAGTACATGATCCAGGAG
GAGGAGTGGGACCGGACCTGCTCCTGGACCCAGCCTGGGAGAAGCAGCAGAGGAAGACCTTCACTGCC
TGGTGTAACTCCACCTAAGGAAAGCCGGCACCCAGATTGAGAACATCGAGGAAGACTTCAGGAATGGC
CTTAAGCTCATGTGCTTTTGGAAAGTATCTCAGGGGAAAGGCTGCCAAACCTGACCGGGAAAAATG
CGGTTCCACAAAATTGCTAATGTCAACAAAGCTTTGGATTACATAGCCAGCAAAGGGGTGAAACTGGTG
TCCATCGGCGCTGAAGAAATTGTTGATGGCAATGTGAAAATGACCCTGGGTATGATCTGGACCATCATC
CTTCGCTTTGCTATTAGGATATTTGCGTTGAAGAAACATCTGCCAAAGAAGGTCTGCTGCTTTGGTGT
CAGAGGAAAACCTGCTCCTATAGAAATGTGAACATTCAGAACTCCATACTAGCTGGAAAGATGGCCTT
GGACTCTGTGCCCTCATCCACCGACACCCGGCTGACCTCATTGACTACTCAAAGCTTAACAAGGATGAC
CCCATAGGAAATATTAACCTGGCCATGGAAATCGCTGAGAAGCACCTGGATATTCCTAAAATGTTGGAT
GCTGAAGATTTAGTATACACTGCCAGACCCGATGAAAGAGCCATAATGACTTATGTTTCTGTTACTAT
CATGCTTTTGTGGTGCACAGAAGGCCGAGACAGCGGCTAACAGGATATGTAAGGTTCTTGTGTGAAT
CAAGAGAATGAGAGGCTGATGGAAGAATATGAGAGGCTAGCGAGTGAAGTGGTGGTGGTGGTGGTGGT
ACGATCCCCTGGCTGGAGAACCAGGACTCCCGAGAAGACCATGCAAGCCATGCAGAAGAAGCTGGAGGAC
TTCCGGGATTACCGCCGAAGCACAAGCCACCCAAAGGTGCAGGAGAAATGCCAGCTGGAGATCAACTTC
AACACGCTGCAGACCAAGCTGCGGATCAGCAACCGTCTGCCCTCATGCCCTCCGAGGGCAAGATGGTG
TCGGATATTGCTGGTGCCTGGCAGAGGCTGGAGCAGGCTGAGAAGGTTACGAGGAGTGGTTGCTCAAT
GAGATTGGGACTGGAGCGCTTGAACACCTGGCTGAGAAGTTACGGCAGAAGGCCCTCAACCCACGAG
ACTTGGGCTTATGGCAAAGAGCAGATCTTGTCTGCAAGAAGGATTACGAGTCCGGCTGCTGACAGAGGTG
CGGGCTCTGCTGCGGAAGCACGAGGCGTTGAGAGCGACCTGGCAGCGCACCCAGGACCGCTGGAGCAG
ATCGCAGCCATCGCGCAGGAGCTCAATGAACTGGACTATCACGACGCTGTGAATGTCAATGATCGGTGC
CAGAAAATTTGTGACCAGTGGGACCGACTGGGAACGTTACTCAGAAGAGGAGAGAAGCCCTAGAGAGA
ATGGAGAAATTGCTAGAAACATTGATCAGCTTCACTGGAGTTTCCAAAGAGGGCTGCTCCTTTCAAC
AATTGGATGGAGGGCGCTATGGAGGATCTGCAAGATATGTTTATTGTCACAGCATTGAGGAGATCCAG
AGTCTGATCACTGCGCATGAGCAGTTCAAGGCCACGCTGCCCGAGGCGGACGGAGAGCGGCAGTCCATC
ATGGCCATCCAGAACGAGGTGGAGAAGGTGATTACAGAGCTACAACATCAGAATCAGCTCAAGCAACCCG
TACAGCACTGTACCATGGATGAGCTCCGGACCAAGTGGGACAAGGTGAAGCAACTCGTGCCCATCCGC
GATCAATCCCTGCAGGAGGAGCTGGCTCGCCAGCATGCTAACGAGCGTCTGAGGGCCAGTTTGTGCC
CAAGCCAATGCCATTGGGCCCTGGATCCAGAACAAGATGGAGGAGATTGCCCGGAGCTCCATCCAGATC
ACAGGAGCCCTGGAAGACCAGATGAACCAGCTGAAGCAGTATGAGCACAACATCATCAACTATAAGAAC
AACATCGACAAGCTGGAGGGAGACCATCAGCTCATCCAGGAGGCCCTTGTCTTTGACAACAAGCACACG
AACTACACGATGGAGCACATTGCTGTTGGATGGGAGCTGCTGTGACAACCATCGCCAGAACCATCAAT
GAGGTGGAGACTCAGATCCTGACGAGAGATGCGAAGGGCATCACCCAGGAGCAGATGAATGAGTTTCA
GCCTCCTTCAACCACTTTGACAGGAGGAAGAATGGCCTGATGGATCATGAGGATTTTCAAGAGCTTCC
ATTTCCATGGGTTATGACCTGGGTGAAGCCGAATTTGCCCGCATTATGACCCTGGTAGATCCCAACGGG
CAAGGCACCGTACCTTCCAATCCTTATCGACTTATGACTAGAGAGACGGCTGACACCGACACTGCC
GAGCAGGTGATCGCTCCTTCCGGATCCTGGCTTCTGATAAGCCATACATCCTGGCGGAGGAGCTGCGT
CGGGAGCTGCCCCGGATCAGGCCAGTACTGCATCAAGAGGATGCCCGCTACTCGGGCCAGGCGAT
GTGCTTGGTGCATGGATTACGCTGCGTTCTTCCGCACTCTACGGGGAGAGCGATCTG
ACGCGTACGCGGCCGCTCGAG - GFP Tag - GTTTAAAC
```

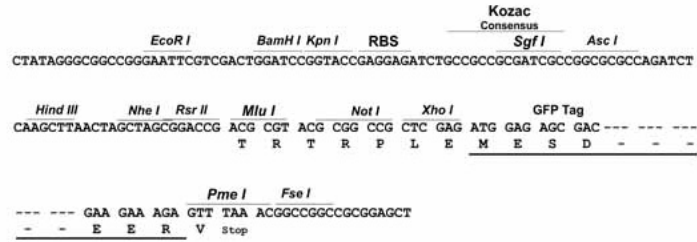
Protein Sequence: >Peptide sequence encoded by RG239748
Blue=ORF Red=Cloning site Green=Tag(s)

MNQIEPGVQYNYVYDEDEYMIQEEEWDRDLLLDPAWEKQQRKFTAWCNShLRKAGTQIENIEEDFRNG
LKLMLLLEVISGERLPKPDGRGKMRFHKIANNKALDYIASKGVKLVSIGAEEIVDGNVMTLGMIWTII
LRF AIQDISVEETSAKEGLLLWCQRKTAPYRNVNIQNFHTSWKDGLGLCALIHRHRPDLIDYSKLNKDD
PIGNINLAMEIAEKHL DIPKMLDAEDLVYTARPDERAIMTYVSCYYHAFAGAQAETAANRICKVLAVN
QENERLMEEYERLASELLEWIRRTIPWLENRTPEKTMQAMQKLEDFRDYRRKHKPPKVQEKCLEINF
NTLQTKLRISNRPAFMPSEGKMYSDIAGAWQRLEQAEGYEWLLNEIRRLERLEHLAEKFRQKASTHE
TWAYGKEQILLQKDYESASL TEVRALLRKHEAFESDLAAHQDRVEQIAAIAQELNELDYHDAVNVNDR
QKICDQWDLGTLTQKRREALERMEKLL ETIDQLHLEFAKRAAPFNWMEGAMEDLQDMFIVHSIEEQ
SLITAHEQFATLPEADGERQSIMAIQNEVEKVIQSYNIRISSNPYSTVTMDELRTKWDKVKQLVPIR
DQSLQEELARQHANERLRRQFAAQANAIGPWIQNKMEEIARSSIQITGALEDQMNQLKQYEHNIINYKN
NIDKLEGDHQLIQEALVFDNKHTNYTMEHIRVWELLLTTIARTINEVETQILTRDAKGITQEQMNEFR
ASFNHFDRRKNGLMDHEDFRACLISMGYDLGEAEFARIMTLVDPNGQGT VTFQSFIDFMTRETADTDTA
EQVIASFRILASDKPYILAEELRRELPPDQAQYCIKMPAYSGPGSVPGALDYAAFSSALYGESDL
TRTRPLEMESDESGLPAMEIECRITGTLNGVEFELVGGGEGTPEQGRMTNKMKSTKGALTFSPYLLSHV
MGYGFYHFGTYPSTYSGYENPFLHAINNGGYTNRIEKYEDGGVLHVSFSYRYEAGRVIGDFKVMGTGFPE
SVIFTDKIIIRSNATVEHLHPMGDNDLDGSFTRTFSLRDGGYSSVVDSHMHFKSAIHPSILQNGGPMFA
FRRVEEDHSNTELGIVEYQHAFKTPDADAGEERV

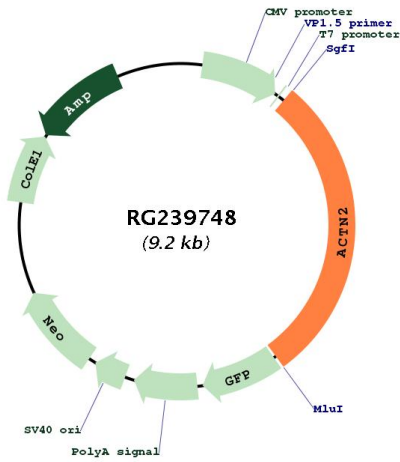
Restriction Sites: SgfI-MluI

Cloning Scheme:

Cloning sites used for ORF Shutting:



Plasmid Map:



ACCN:

NM_001278343

ORF Size:	2682 bp
OTI Disclaimer:	The molecular sequence of this clone aligns with the gene accession number as a point of reference only. However, individual transcript sequences of the same gene can differ through naturally occurring variations (e.g. polymorphisms), each with its own valid existence. This clone is substantially in agreement with the reference, but a complete review of all prevailing variants is recommended prior to use. More info
OTI Annotation:	This clone was engineered to express the complete ORF with an expression tag. Expression varies depending on the nature of the gene.
Components:	The ORF clone is ion-exchange column purified and shipped in a 2D barcoded Matrix tube containing 10ug of transfection-ready, dried plasmid DNA (reconstitute with 100 ul of water).
RefSeq:	NM_001278343.1 , NP_001265272.1
RefSeq Size:	4926 bp
RefSeq ORF:	2685 bp
Locus ID:	88
UniProt ID:	P35609
Cytogenetics:	1q43
Protein Pathways:	Adherens junction, Arrhythmogenic right ventricular cardiomyopathy (ARVC), Focal adhesion, Leukocyte transendothelial migration, Regulation of actin cytoskeleton, Systemic lupus erythematosus, Tight junction
MW:	104.4 kDa
Gene Summary:	Alpha actinins belong to the spectrin gene superfamily which represents a diverse group of cytoskeletal proteins, including the alpha and beta spectrins and dystrophins. Alpha actinin is an actin-binding protein with multiple roles in different cell types. In nonmuscle cells, the cytoskeletal isoform is found along microfilament bundles and adherens-type junctions, where it is involved in binding actin to the membrane. In contrast, skeletal, cardiac, and smooth muscle isoforms are localized to the Z-disc and analogous dense bodies, where they help anchor the myofibrillar actin filaments. This gene encodes a muscle-specific, alpha actinin isoform that is expressed in both skeletal and cardiac muscles. Several transcript variants encoding different isoforms have been found for this gene. [provided by RefSeq, May 2013]