

Product datasheet for **RG239740**

delta 2 Catenin (CTNND2) (NM_001288716) Human Tagged ORF Clone

Product data:

Product Type:	Expression Plasmids
Product Name:	delta 2 Catenin (CTNND2) (NM_001288716) Human Tagged ORF Clone
Tag:	TurboGFP
Symbol:	CTNND2
Synonyms:	GT24; NPRAP
Mammalian Cell Selection:	Neomycin
Vector:	pCMV6-AC-GFP (PS100010)
E. coli Selection:	Ampicillin (100 ug/mL)



[View online »](#)

ORF Nucleotide
Sequence:

>RG239740 representing NM_001288716.
Blue=ORF Red=Cloning site Green=Tag(s)

```
GCTCGTTTAGTGAACCGTCAGAATTTTGTAAACGACTCACTATAGGGCGGCCGGGAATTCGTGACTG
GATCCGGTACCGAGGAGATCTGCCGCCCGGATCGCC
ATGAGCAGCATGAGTTTCAAGCAGAGCAGTTCAGTGGCAGTCACAAGATGGTCAAAAAGATATCGAA
GATGAGCTTACAACAGGTCTCGAGCTGGTGGACTCCTGTATTAGTCACTACAGGAATCAGGAATACTT
GACCCACAGGATTATTCTACAGGTGAAACTGGTTCCCGAGCCTCATACAGCAGCCAGCATGGGCACCTG
GGCCAGAGTTGCGGGCCCTGCAGTCCCAAGAACACCACATAGATCCCATCTATGAAGACCGCGTCTAT
CAGAAGCCCCCTATGAGGAGTCTCAGCCAGAGCCAGGGGGACCCTCTGCCGCCAGCACACACCGGCACC
TACCGCACGAGCACAGCCCCATCTCCCTGGTGTGACTCCGTCCTTGCAGCGCACAGGCAGCCAG
CACGGCCACAGAATGCCGCCGCGGCCACCTCCAGAGGGCCAGCTATGCCGCCGGCCAGCCTCCAAT
TACGGGACCCCTACCGACAGTGCAGTATTGTCCTCTGTTGAGTCTCCATACAGCAAATCCGGCCCT
GCTCTCCCGCTGAAGGCACCTGGCCAGTCCCGTCCATTGATAGCATTACAGAAAGATCCAGAGAA
TTTGGATGGAGAGACCCGGAAGTCCCGAAGTATTGATGATGTTGCAGCACCAGTTTCCCTGGTCCAG
TCTAACCGCGCAGCCTACTTGAAACACCTCTGTTTGGAGACAACAAAATTAAGCCGAGATAAGGAGA
CAAGGAGGCATCCAGCTCCTGGTGGACCTGTTGGATCATCGGATGACCGAAGTCCACCGTAGTGCCTGT
GGAGCTCTGAGAAACCTGGTGTATGGGAAGGCCAACGATGATAACAAAATGCCCTGAAAAACTGTGGT
GGCATCCAGCACTGGTGGGTTACTCCGCAAGACGACTGACCTGGAGATCCGGGAGCTGGTACAGGA
GTCCTTTGGAACCTCTCCTCATGCGATGCACTCAAAATGCCAATCATCCAGGATGCCCTAGCAGTACTG
ACCAACCGGTGATTATCCCCACTCAGGCTGGGAAAATTCGCTCTTCCAGGATGATCGGAAAATACAG
CTGCATTATCACAGGTGCTGCGTAACGCCACCGGGTGCCTAAGGAATGTTAGTTCGGCCGAGAGGAG
GCCCCGAGAAGGATGAGAGAGTGTATGGGCTTACGGATGCCTGCTGTACGTGATCCAGTCTGCGCTG
GGGAGCAGTGAGATCGATAGCAAGACCGTTGAAAACCTGTGTGTGATTTTAAGGAACCTCTCGTACCGG
CTGGCGGCAGAAACGTCTCAGGGACAGCACATGGGCACGACGAGCTGGACGGGCTACTCTGTGGCGAG
GCCAATGGCAAGGATGCTGAGAGCTCTGGGTGCTGGGGCAAGAAGAAGAAAAGAAAATCCCAAGAT
CAGTGGGATGGAGTAGGACCTCTCCAGACTGTGCTGAACCACCAAAAAGGGATCCAGATGCTGTGGCAC
CCATCAATAGTCAAACCTACCTCACACTGCTCTGAGTGTCAAATCCAGACACGCTGGAAGGGGCG
GCAGGCGCCCTGCAGAACTTGGCTGCAGGGAGCTGGAAGTGGTCAATATATCCGAGCCGCTGTCCGA
AAAGAGAAAGGCCTGCCATCCTCGTGGAGCTGCTCCGAATAGACAATGACCGTGTGGTGTGCGCGGTG
GCCACTGCGCTGCGGAACATGGCCTTGGACGTCAGAAAT AAGGAGCTCATCGGCAATACGCCATGCCA
GACCTAGTCCACAGGCTTCCAGGAGGGAACAACAGCAACAACACTGCAAGCAAGGCCATGTCCGATGAC
ACAGTGACAGCTGTCTGCTGCACACTGCACGAAGTATTACCAAGAACATGGAGAACGCCAAGGCCCTTA
CGGGATGCCGGTGGCATCGAGAAGTTGGTGGCATCTCCAAAAGCAAAGGAGATAAAACTCTCCAAAA
GTGGTCAAGGCTGCATCTCAGGTCTCAACAGCATGTGGCAGTACCGAGATCTGAGGAGTCTTACAAA
AAGGATGGATGGTCAATAACACTTTGTAGCCTCGTCTTCAACCATCGAGAGGGACCGGCAAAGGCC
TACTCTCCTCCCGCACGCCCTCCATCTCCCTGTGCGCGTGTCTCCCAACAACCGCTCAGCAAGTCC
CCAGCTTACCTCGGAAATGATCAGCTCAAAGAAAAGAAAACAGACTACGAGTGCACCGGCAGCAAC
GCCACCTACCACGGAGCTAAAGGGCAACACACTCCAGGAAAGATGCCATGACAGCTCAAAACACTGGA
ATTTCAACTTTGTATAGGAATTCTTATGGTGGCCCGCTGAAGACATCAACACAACAGGTTTCAGCA
CAGCCAGTCCACAGGAGCCAGCAGAAAAGATTACGAGACCTACCAGCCATTTAGAAATCCACAAGA
AATTACGATGAGTCTTCTTCGAGGACCAGGTCCACCATCGCCCTCCCGCCAGCGAGTACCCATGCAC
CTGGGTCTCAAGTCCACCGGCAACTACGTTGACTTCTACTCAGCTGCCCGTCCCTACAGTGAAGTGAAC
TATGAAACGAGCCACTACCGGCCTCCCCGACTCCTGGGTG
ACGCGTACGCGGCCGCTCGAG - GFP Tag - GTTTAAAC
```

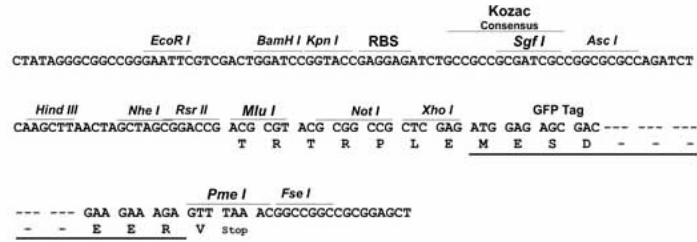
Protein Sequence: >Peptide sequence encoded by RG239740
Blue=ORF Red=Cloning site Green=Tag(s)

MSSMSSAEEQFQWQSQDGQKDIEDELTTGLELVDSCIRSLQESGILDPQDYSTGETGSRASYSSQHGHL
GPELRALQSPEHHIDPIYEDRVYQKPPMRSLSQSQGDPLPPAHTGTYRTSTAPSSPGVDSVPLQRTGSQ
HGPQNAAAATFQRASYAAGPASNYADPYRQLQYCPSPYKSGPALPPEGLARSPSIDSIQKDPRE
FGWRDPELPEVIQMLQHQPFSVQSNAAAYLQHLCFGDNKIKAEIRRQGGIQLLVDLLDHRMTEVHRSAC
GALRNLVYGKANDDNKIALKNCGGIPALVRLLRKTTDLEIRELVTGVLWNLSSCDALKMPIIQDALAVL
TNAVIIIPHSGWENSPLQDDRKIQLHSSQVLRNATGCLRNVSSAGEEARRRMRECDGLTDALLYVIQSAL
GSSEIDSKTVENCVCILRNL SYRLAAETSQGQHMGTDEL DGLLCGEANGKDAESSGCWGKKKKKKSQD
QWDGVGPLPDCAEPPKGIQMLWHP SIVKPYL TLLSECSNPDTLEGAAGALQNL AAGSWKWSVYIRA AVR
KEKGLPILVELLRIDNDRVVC AVATALRNMALDVRNKE LIGKYAMRDLVHRLPGGNNSNNTASKAMSDD
TVTAVCCTLHEVITKNMENAKALRDAGGIEKLVGISKSKGDKHSPKVVKAASQVLNSMWQYRDLRSLYK
KDGWSQYHFVASSSTIERDRQRPYSSSRTPSISPVRVSPNNRSASAPSPREMISLKERKTDYECTGSN
ATYHGAKGEHTSRKDAMTAQNTGISTLYRNSYGAPAEDIKHNQVSAQPVPQEPSRKDYETYQPFQNSTR
NYDESFFEDQVHHRPPASEYTMHLGLKSTGNYVDFYSAARPYSELNYETSHYPASPDSW
TRTRPLEME SDESGLPAMEIECRITGTLNGVEFELVGGGEGTPEQGRMTNKMKSTKGALTFSPYLLSHV
MGYGFYHFGTYP SGYENPFLHAINNGGYNTRIEKYEDGGVLHVSFSYRYEAGRVI GDFKVMGTGFPEP
SVIFTDKIIRSNATVEHLHPMGDNDLDGSFTRTFSLRDGGYSSVVDSHMHFKSAIHPSILQNGGPMFA
FRRVEEDHSNTELGIVEYQHAFKTPDADAGEERV

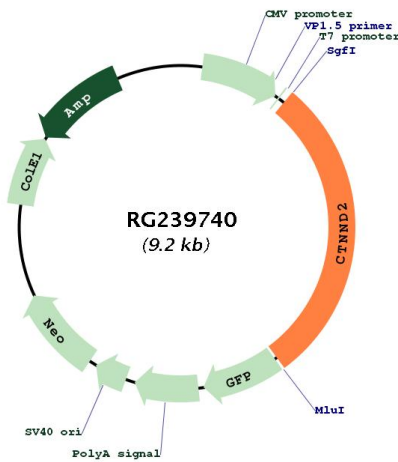
Restriction Sites: Sgfl-MluI

Cloning Scheme:

Cloning sites used for ORF Shutting:



Plasmid Map:



ACCN:

NM_001288716

ORF Size:	2664 bp
OTI Disclaimer:	The molecular sequence of this clone aligns with the gene accession number as a point of reference only. However, individual transcript sequences of the same gene can differ through naturally occurring variations (e.g. polymorphisms), each with its own valid existence. This clone is substantially in agreement with the reference, but a complete review of all prevailing variants is recommended prior to use. More info
OTI Annotation:	This clone was engineered to express the complete ORF with an expression tag. Expression varies depending on the nature of the gene.
Components:	The ORF clone is ion-exchange column purified and shipped in a 2D barcoded Matrix tube containing 10ug of transfection-ready, dried plasmid DNA (reconstitute with 100 ul of water).
RefSeq:	NM_001288716.1 , NP_001275645.1
RefSeq Size:	4551 bp
RefSeq ORF:	2667 bp
Locus ID:	1501
UniProt ID:	Q9UQB3
Cytogenetics:	5p15.2
Protein Families:	Druggable Genome
MW:	98.4 kDa
Gene Summary:	This gene encodes an adhesive junction associated protein of the armadillo/beta-catenin superfamily and is implicated in brain and eye development and cancer formation. The protein encoded by this gene promotes the disruption of E-cadherin based adherens junction to favor cell spreading upon stimulation by hepatocyte growth factor. This gene is overexpressed in prostate adenocarcinomas and is associated with decreased expression of tumor suppressor E-cadherin in this tissue. This gene resides in a region of the short arm of chromosome 5 that is deleted in Cri du Chat syndrome. Alternative splicing results in multiple transcript variants encoding different isoforms. [provided by RefSeq, Dec 2013]