

Product datasheet for **RG239730**

LGR5 (NM_001277226) Human Tagged ORF Clone

Product data:

Product Type:	Expression Plasmids
Product Name:	LGR5 (NM_001277226) Human Tagged ORF Clone
Tag:	TurboGFP
Symbol:	LGR5
Synonyms:	FEX; GPR49; GPR67; GRP49; HG38
Mammalian Cell Selection:	Neomycin
Vector:	pCMV6-AC-GFP (PS100010)
E. coli Selection:	Ampicillin (100 ug/mL)



[View online »](#)

ORF Nucleotide Sequence:

>RG239730 representing NM_001277226.
 Blue=ORF Red=Cloning site Green=Tag(s)

```

GCTCGTTTAGTGAACCGTCAGAATTTTGTAAACGACTCACTATAGGGCGGCCGGGAATTCGTGACTG
GATCCGGTACCGAGGAGATCTGCCGCCCGCATCGCC
ATGGACACCTCCCGGCTCGGTGTGCTCCTTGCTTGCCTGTGCTGCTGCAGCTGGCGACCGGGGCGAGC
TCTCCCAGGTCTGGTGTGTTGCTGAGGGGCTGCCACACACTGTCATTGCGAGCCCGACGGCAGGATG
TTGCTCAGGGTGGACTGCTCCGACCTGGGGCTCTCGGAGCTGCCTTCCAACCTCAGCGTCTTCACTCC
TACCTAGACCTCAGTATGAACAACATCAGTCAGCTGCTCCCGAATCCCCTGCCAGTCTCCGCTTCTG
GAGGAGTTACGTCTTGCGGGAAACGCTCTGACATACATCCCAAGGGAGCATTCACTGGCCTTTACAGT
CTTAAAGTTCTTATGCTGCAGAATAATCAGCTAAGACACGTACCCACAGAAGCTCTGCAGAATTTGCGA
AGCCTTCAATCCCTGCGTCTGGATGCTAACCACATCAGCTATGTGCCCCAAGCTGTTTCAGTGGCCTG
CATTCCCTGAGGCACCTGTGGCTGGATGACAATGCGTTAACAGAAATCCCGTCCAGGCTTTTGAAGT
TTATCGGCATTGCAAGCCATGACCTTGGCCCTGAACAAAATACACCACATACCAGACTATGCCTTTGGA
AACCTCTCCAGCTTGGTAGTTCTACATCTCCATAACAATAGAATCCACTCCCTGGGAAAGAAATGCTTT
GATGGGCTCCACAGCCTAGAGACTTTAGATTTAAATTACAATAACCTTGATGAATCCCCACTGCAATT
AGGACACTCTCCAACCTTAAAGAACTACATTTCTATGACAATCCCATCCAGTTTGTGGGAGATCTGCT
TTTCAACATTTACCTGAACTAAGAACTGACTCTGAATGGTGCCTCACAAATAACTGAATTTCTGAT
TAACTGGAAGTCAACCTGGAGAGTCTGACTTAACTGGAGCACAGATCTCATCTTCTTCTCAAACC
GTCTGCAATCAGTTACCTAATCTCCAAGTGTAGATCTGTCTTACAACCTATTAGAAGATTTACCCAGT
TTTTAGTCTGCCAAAAGCTTCAAGAAATTGACCTAAGACATAATGAAATCTACGAAATTAAGTTGAC
ACTTTCCAGCAGTTGCTTAGCCTCCGATCGTGAATTTGGCTTGAACAAAATTTGCTATTATCCACCC
AATGCAATTTCCACTTTGCCATCCCTAATAAAGCTGGACCTATCGTCCAACCTCCTGCTCTTTTCTC
ATAACTGGGTACATGGTTAACTCACTTAAAAATTAACAGGAAATCATGCCTTACAGAGCTTGATATCA
TCTGAAAATTTCCAGAACTCAAGGTTATAGAATGCCTTATGCTTACCAGTGTGTGCATTTGGAGTG
TGTGAGAAATGCCTATAAGATTTCTAATCAATGGAATAAAGGTGACAACAGCAGTATGGACGACCTTCA
AAGAAAGATGCTGGAATGTTTCAGGCTCAAGATGAACGTGACCTTGAAGATTTCTGCTTACTTTGAG
GAAGACCTGAAAGCCCTTCACTCAGTGCAGTGTACCTTCCCCAGGCCCTTCAAACCTGTGAACAC
CTGCTTGTATGGCTGGCTGATCAGAATTGGAGTGTGGACCATAGCAGTTCTGGCACTTACTGTAAATGCT
TTGGTGAATCAACAGTTTTTCAATCCCCTCTGTACATTTCCCCATTAACCTGTTAATTTGGGTCATC
GCAGCAGTGAACATGCTCACGGGAGTCTCCAGTCCGTGCTGGCTGGTGTGGATGCGTTCACTTTTGGC
AGCTTTGCACGACATGGTGCCTGGTGGGAGAATGGGGTTGGTTGCCATGTCATTGGTTTTTGTCCATT
TTTGCTTCAAGATCATCTGTTTTCTGCTTACTCTGGCAGCCCTGGAGCGTGGGTCTCTGTGAAATAT
TCTGCAAAATTTGAAACGAAAGCTCCATTTTCTAGCCTGAAAGTAATCATTTTGTCTGTGCCCTGCTG
GCCTTGACCATGGCCGAGTTCCTCTGCTGGGTGGCAGCAAGTATGGCGCCTCCCCTCTCTGCTGCCT
TTGCCTTTTGGGAGCCAGCACCATGGGCTACATGGTCGCTCTCATCTTGTCAATTCCTTTGCTTC
CTCATGATGACCATGCTACACCAAGCTCTACTGCAATTTGGACAAGGGAGACCTGGAGAATATTTGG
GACTGCTCTATGGTAAAACACATTGCCCTGTGCTCTTCAACCACTGCATCCTAAACTGCCCTGTGGT
TTCTTTGCTTCTCCTCTTAAATAAACCTTACATTTATCAGTCCCTGAAGTAATTAAGTTTATCCTCTG
GTGGTAGTCCCACTTCTGCATGTCTCAATCCCCTTCTCTACATCTTGTCAATCCTCACTTTAAGGAG
GATCTGGTGAACCTGAGAAGCAAACTACGTCTGGACAAGATCAAAACCCCAAGCTTGTATGTCATTA
AACTCTGATGATGCGAAAAACAGTCTGTGACTCAACTCAAGCCTTGGTAACTTTACCAGCTCCAGC
ATCACTTATGACCTGCCTCCAGTTCCTGCCATCACCAGCTTATCCAGTACTGAGAGCTGCCATCTT
TCCTCTGTGGCATTGTCCCATGTCTC
ACGCGTACGCGGCCGCTCGAG - GFP Tag - GTTAAAC
  
```

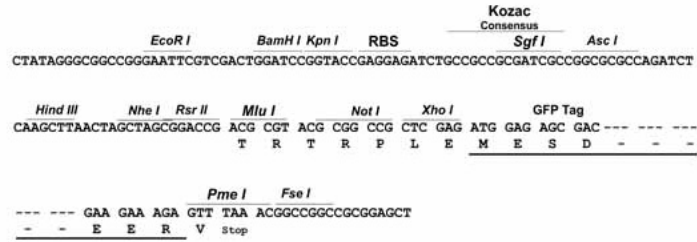
Protein Sequence: >Peptide sequence encoded by RG239730
 Blue=ORF Red=Cloning site Green=Tag(s)

MDTSRLGVLLSLPVLLQLATGGSSPRSGVLLRGCPHCHCEPDGRMLLRVDCSDLGSELPSNLSVFTS
 YLDLSMNNISQLLPNPLPSLRFLEELRLAGNALTYIPKGAFTGLYSLKVLMLQNNQLRHVPTEALQNLR
 SLQSLRLDANHISYVPPSCFSGLHSLRHLWDDNALTEIPVQAFRSLSALQAMTLALNKIHHIPDYAFG
 NLSSLVVLHLHNNRIHSLGKKCFDGLHSLETLDLNYNNLDEFPTAIRTLSNLKELHFYDNP IQFVGRSA
 FQHLPELRTLTLNGASQITEFPDLTGANLES LTLTGAQISSLPQTVCNQLPNLQVLDLSYNLLEDLPS
 FSVCQKLQKIDLRHNEIYEIKVDTFQQLSLRSLNLAWNKIAIIHPNAFSTLPSLIKLDLSSNLLSSFP
 ITGLHGLTHLKLGNHALQSLISSENFPELKVIEMPYAYQCCAFGVCENAYKISNQWNGDNSSMDDLH
 KKDAGMFAQQDERDLEDFLLDFEEDLKALHSVQCSPSPGPFKPEHLLDGWLIRIGVWTIAVLALTCNA
 LVTSTVFRSPLYISPIKLLIGVIAAVNMLTGVS SA VLAGVDAFTFGSFARHGAWWENGVGCHVIGFLSI
 FASESSVFLTLAALERGF SVKYS AKFETKAPFSSLKVIILLCALLAL TMAAVPLLGSKYGASPLCLP
 LPFGEPSTMGYMVALILLNSLCFLMMTIA YTKLYCNLDKGDLENIWDCSMVKHIALLLFTNCILNCPVA
 FLSFSSLINLTFISPEVIK FILLVVVPLPA CLNPLLYILFNPHFKEDLVSLRKQTYVWTRSKHPSLMSI
 NSDDVEKQSCDSTQALVTFTSSSITYDLPPSSVSPAYPVTESCHLSSVAFVPCL
TRTRPLEMESDESGLPAMEIECRITGTLNGVEFELVGGGEGTPEQGRMTNKMKSTKGALTFSPYLLSHV
 MGYGFYHFGTYPSGYENPFLHAINNGGYNTRIEKYEDGGVLHVSFSYRYEAGRVIGDFKVMGTGFPEP
 SVIFTDKIIRSNATVEHLHPMGDNDLDGSFTRTFSLRDGGYSSVVDSHMHFKSAIHPSILQNGGPMFA
 FRRVEEDHSNTELGIVEYQHAFKTPDADAGEERV

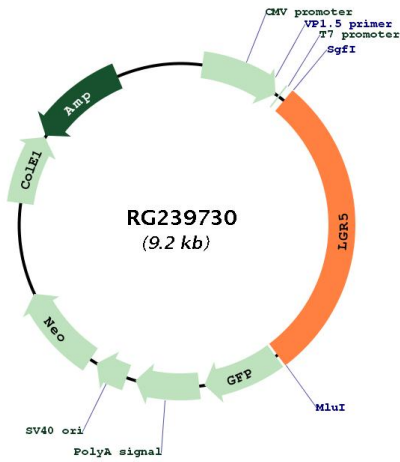
Restriction Sites: Sgfl-Mlul

Cloning Scheme:

Cloning sites used for ORF Shutting:



Plasmid Map:



ACCN:

NM_001277226

ORF Size:	2649 bp
OTI Disclaimer:	The molecular sequence of this clone aligns with the gene accession number as a point of reference only. However, individual transcript sequences of the same gene can differ through naturally occurring variations (e.g. polymorphisms), each with its own valid existence. This clone is substantially in agreement with the reference, but a complete review of all prevailing variants is recommended prior to use. More info
OTI Annotation:	This clone was engineered to express the complete ORF with an expression tag. Expression varies depending on the nature of the gene.
Components:	The ORF clone is ion-exchange column purified and shipped in a 2D barcoded Matrix tube containing 10ug of transfection-ready, dried plasmid DNA (reconstitute with 100 ul of water).
RefSeq:	NM_001277226.2
RefSeq Size:	4553 bp
RefSeq ORF:	2652 bp
Locus ID:	8549
UniProt ID:	O75473
Cytogenetics:	12q21.1
Protein Families:	Druggable Genome, GPCR, Transmembrane
MW:	97.9 kDa
Gene Summary:	The protein encoded by this gene is a leucine-rich repeat-containing receptor (LGR) and member of the G protein-coupled, 7-transmembrane receptor (GPCR) superfamily. The encoded protein is a receptor for R-spondins and is involved in the canonical Wnt signaling pathway. This protein plays a role in the formation and maintenance of adult intestinal stem cells during postembryonic development. Several transcript variants encoding different isoforms have been found for this gene. [provided by RefSeq, Sep 2015]