

Product datasheet for **RG239719**

MCK10 (DDR1) (NM_001297653) Human Tagged ORF Clone

Product data:

| | |
|---------------------------|--|
| Product Type: | Expression Plasmids |
| Product Name: | MCK10 (DDR1) (NM_001297653) Human Tagged ORF Clone |
| Tag: | TurboGFP |
| Symbol: | MCK10 |
| Synonyms: | CAK; CD167; DDR; EDDR1; HGK2; MCK10; NEP; NTRK4; PTK3; PTK3A; RTK6; TRKE |
| Mammalian Cell Selection: | Neomycin |
| Vector: | pCMV6-AC-GFP (PS100010) |
| E. coli Selection: | Ampicillin (100 ug/mL) |



[View online »](#)

ORF Nucleotide Sequence:

>RG239719 representing NM_001297653.
 Blue=ORF Red=Cloning site Green=Tag(s)

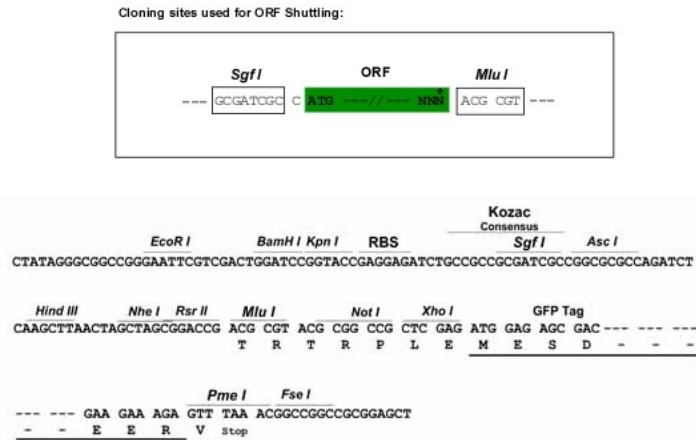
```
GCTCGTTTAGTGAACCGTCAGAATTTTGTAAACGACTCACTATAGGGCGGCCGGGAATTCGTGACTG
GATCCGGTACCGAGGAGATCTGCCGCCCGCATCGCC
ATGGGACCAGAGGCCCTGTCATCTTTACTGCTGCTCTTGGTGCCAAGTGGAGATGCTGACATGAAG
GGACATTTTATCCTGCTCCAGTCCCTGGTCCAGTATGCCCTGGGCATGCAGGACCGGACCATCCAGACAGTGAC
ATCTCTGCTTCCAGTCCCTGGTCCAGATTCCACTGCCGCCCGCCACAGCAGTTGGAGAGCAGTGACGGG
GATGGGGCCTGGTGCCCCGAGGGTCCGGTGTTCCTCCAAGGAGGAGGAGTACTTGCAGGTGGATCTACAA
CGACTGCACCTGGTGGCTCTGGTGGGCACCCAGGGACGGCATGCCGGGGCCCTGGGCAAGGAGTTCTCC
CGGAGCTACCGGCTGCGTTACTCCCGGGATGGTCGCCGCTGGATGGGCTGGAAGGACCGCTGGGGTCAG
GAGGTGATCTCAGGCAATGAGGACCTGAGGGAGTGGTGTGAAGGACCTTGGGCCCCCATGGTTGCC
CGACTGGTTGCTTCTACCCCGGGCTGACCGGGTCATGAGCGTCTGTCTGCGGGTAGAGCTCTATGGC
TGCTCTGGAGGGATGGACTCCTGTCTTACACTGCCCTGTGGGGCAGACAATGATTTTATCTGAGGCC
GTGTACCTCAACGACTCCACCTATGACGGACATACCGTGGCGGACTGCAGTATGGGGTCTGGGCCAG
CTGGCAGATGGTGTGGTGGGGCTGGATGACTTTAGGAAGAGTCAGGAGCTGCGGGTCTGGCCAGGCTAT
GACTATGTGGGATGGAGCAACCACAGCTTCTCCAGTGGCTATGTGGAGATGGAGTTTGGTTGACCCG
CTGAGGGCCTTCCAGGCTATGCAGGTCCACTGTAACAACATGCACACGCTGGGAGCCCGTCTGCCTGGC
GGGGTGGAAATGTCGCTTCCGGCGTGGCCCTGCCATGGCCTGGGAGGGGGAGCCATGCGCCACAACCTA
GGGGGCAACCTGGGGGACCCAGAGCCCGGGCTGTCTCAGTGCCTTGGCGGCCGTGTGGCTCGCTTT
CTGCAGTGCCGCTTCTCTTTGCGGGCCCTGGTACTCTCAGCGAAATCTCCTTATCTCTGATGTG
GTGAACAATTCCTCTCCGGCACTGGGAGGCACCTTCCCGCCAGCCCCCTGGTGGCCGCTGGCCACCT
CCACCAACTTCAGCAGCTTGGAGCTGGAGCCCAGAGGCCAGCAGCCCGTGGCCAAGGCCGAGGGGAGC
CCGACCGCCATCCTCATCGGCTGCCTGGTGGCCATCATCCTGCTCCTGCTCATCATTGCCCTCATG
CTCTGGCGGCTGCACTGGCGCAGGCTCCTCAGCAAGGCTGAACGAGGGTGTGGAAGAGGAGCTGACG
GTTACCTCTCTGCTCCCTGGGGACACTATCCTCATCAACAACCGCCAGGTCCTAGAGAGCCACCCCG
TACCAGGAGCCCCGGCCTCGTGGGAATCCGCCCACTCCGCTCCCTGTGTCCTCAATGGCTCTGCCTAC
AGTGGGGACTATATGGAGCCTGAGAAGCCAGGCGCCCGCTTCTGCCCCACCTCCCAAGACAGCGTC
CCCCATTATGCCAGGCTGACATTGTTACCCTGCAGGGCGTCACCGGGGGCAACACCTATGCTGTGCT
GCACTGCCCCAGGGCAGTCGGGGATGGGCCCCAGAGTGGATTTCCCTCGATCTGACTCCGCTTC
AAGGAGAAGCTTGGCGAGGGCCAGTTTGGGGAGGTGCACCTGTGTGAGGTGCACAGCCCTCAAGATCTG
GTTAGTCTTGATTTCCCCCTAATGTGCGTAAGGGACACCCTTTGCTGGTAGCTGTCAAGATCTTACGG
CCAGATGCCACCAAGAATGCCAGGAATGATTTCTGAAAGAGGTGAAGATCATGTGAGGCTCAAGGAC
CCAAACATCATTGCGTCTGGGCGTGTGTGTGCAGGACGACCCCTCTGCATGATTACTGACTACATG
GAGAACGGCGACCTCAACCAGTTCTCAGTGCCCAACAGCTGGAGGACAAGGCAGCCGAGGGGGCCCT
GGGGACGGGCAGGCTGCGCAGGGGCCACCATCAGTACCCAATGCTGTGCATGTGGCAGCCAGATC
GCCTCCGGCATGCGCTATCTGGCCACACTCAACTTTGTACATCGGGACCTGGCCACGCGGAACTGCCTA
GTTGGGAAAAATTCACCATCAAAATCGCAGACTTTGGCATGAGCCGGAACCTCTATGCTGGAACTAT
TACCGTGTGCAGGGCCGGCAGTGTGCCATCCGCTGGATGGCCTGGGAGTGCATCCTCATGGGAAAG
TTCACGACTGCGAGTGACGTGTGGCCTTTGGTGTGACCCTGTGGGAGGTGCTGATGCTCTGTAGGGCC
CAGCCCTTTGGGAGCTACCGACGAGCAGGTCATCGAGAACGCGGGGGAGTTCTCCGGGACAGGGC
CGGCAGGTGTACCTGTCCCGCCGCTGCCTGCCCGCAGGGCCTATATGAGCTGATGCTTCGGTGTGG
AGCCGGGAGTCTGAGCAGCGACCACCTTTCCAGCTGCATCGGTTCTGGCAGAGGATGCACTCAAC
ACGGTG
ACGCGTACGCGGCCGCTCGAG - GFP Tag - GTTAAAC
```

Protein Sequence: >Peptide sequence encoded by RG239719
 Blue=ORF Red=Cloning site Green=Tag(s)

```

MGPEALSSLLLLL VASGDADMKGHFDPKCRYALGMQDRTIPDSDISASSWSWSDTAARHSRLESSDG
DGAWCPAGSVFPKEEYLQVDLQRLHL VALVGTQGRHAGGLGKEFSRSYRLRYSRDGRRWGMKDRWGQ
EVI SGNEDPEGVVLKDLGPPMVARLVRFYPRADRVMSVCLRVEL YGCLWRDGLLSYAPVGTMYLSEA
VYLNDSTYDGHTVGGLQYGGLGQLADGVVGLDDFRKSQELRVWPGYDYVGSNHSFSSGYVEMEFEDR
LRAFQAMQVHCNMHTLGARLPGGVECRFRRGPAMAWEGEPMRHNLGGNLGDPRARAVSVPLGGRVARF
LQCRFLFAGPWLIFSEISFISDVVNSSPALGGTFPPAPWPPGPPPTNFSSELEPRGQPVAKAEGS
PTAILIGCLVAIILLLLIIALMLWRLHWRLLSKAERRVLEEELTVHLSVPGDTILINNRPGPREPPP
YQEP RPRGNPPHSAPCVNPGSAYSGDYMEPEKPGAPLLPPPPQNSVPHYAEADIVTLQGVTGGNTYAVP
ALPPGAVGDGPPRVDFPRSRLRFKEKLGEGQFGEVHLCEVDSQDLVSLDFPLNVRKGHPDLLVAVKILR
PDATKNARNDFLKEVKIMSRLKDPNIIRLLGVCVQDDPLCMITDYMENGDNLNQLSAHQLEDKAAEGAP
GDGQAAQPTISYPMLLHVAAQIASGMRYLATLNFVHRDLATRNCLVGENFTIKIADFGMSRNL YAGNY
YRVQGRAVLP IIRWMAWECILMGKFTTASDVWAFGVTLWEVLMLCRAQPFQQLTDEQVIENAGEFFRDQG
RQVYLSRPPACPGQLYELMLRCWSRESEQRPPFSQLHRFLAEDALNTV
TRTRPLEMESDESGLPAMEIECRITGTLNGVEFELVGGGEGTPEQGRMTNKMKSTKGALTFSPYLLSHV
MGYGFYHFGTYPSTYENPFLHAINNGGYTNTRIEKYEDGGVLHVSFSYRYEAGRVIGDFKVMGTGFPEP
SVIFTDKIIIRSNATVEHLHPMGDNDLDGSFTRTFSLRDGGYSSVVDSHMHFKSAIHPSILQNGGPMFA
FRRVEEDHSNTELGIVEYQHAFKTPDADAGEERV
  
```

Restriction Sites: Sgfl-MluI

Cloning Scheme:


ACCN: NM_001297653

ORF Size: 2628 bp

OTI Disclaimer: The molecular sequence of this clone aligns with the gene accession number as a point of reference only. However, individual transcript sequences of the same gene can differ through naturally occurring variations (e.g. polymorphisms), each with its own valid existence. This clone is substantially in agreement with the reference, but a complete review of all prevailing variants is recommended prior to use. [More info](#)

OTI Annotation: This clone was engineered to express the complete ORF with an expression tag. Expression varies depending on the nature of the gene.

Components: The ORF clone is ion-exchange column purified and shipped in a 2D barcoded Matrix tube containing 10ug of transfection-ready, dried plasmid DNA (reconstitute with 100 ul of water).

RefSeq: [NM_001297653.1](#), [NP_001284582.1](#)

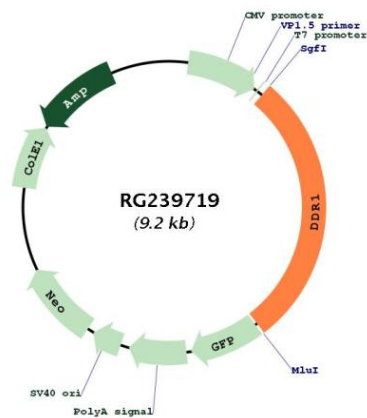
RefSeq Size: 3722 bp

RefSeq ORF: 2631 bp

Locus ID: 780
UniProt ID: [Q08345](#)
Cytogenetics: 6p21.33
Protein Families: Druggable Genome, Protein Kinase, Transmembrane
MW: 97.2 kDa

Gene Summary: Receptor tyrosine kinases play a key role in the communication of cells with their microenvironment. These kinases are involved in the regulation of cell growth, differentiation and metabolism. The protein encoded by this gene belongs to a subfamily of tyrosine kinase receptors with homology to Dictyostelium discoideum protein discoidin I in their extracellular domain, and that are activated by various types of collagen. Expression of this protein is restricted to epithelial cells, particularly in the kidney, lung, gastrointestinal tract, and brain. In addition, it has been shown to be significantly overexpressed in several human tumors. Alternatively spliced transcript variants encoding different isoforms have been described for this gene. [provided by RefSeq, Feb 2011]

Product images:



Circular map for RG239719