

Product datasheet for **RG239714**

MMS19 (NM_001289404) Human Tagged ORF Clone

Product data:

Product Type:	Expression Plasmids
Product Name:	MMS19 (NM_001289404) Human Tagged ORF Clone
Tag:	TurboGFP
Symbol:	MMS19
Synonyms:	CIAO4; hMMS19; MET18; MMS19L
Mammalian Cell Selection:	Neomycin
Vector:	pCMV6-AC-GFP (PS100010)
E. coli Selection:	Ampicillin (100 ug/mL)



[View online »](#)

ORF Nucleotide Sequence:

>RG239714 representing NM_001289404.
 Blue=ORF Red=Cloning site Green=Tag(s)

```

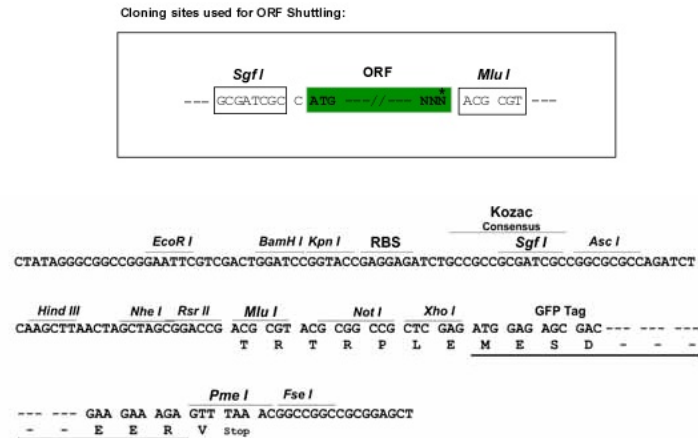
GCTCGTTAGTGAACCGTCAGAATTTTGTAAACGACTCACTATAGGGCGGCCGGGAATTCGTGACTG
GATCCGGTACCGAGGAGATCTGCCGCCACGATCGCC
ATGCGAACCCGGGAAGAAGAGCTAAAGAGCCTAGGAGCTGACTTCACCTTTGGCTTCATCCAGGTGATG
GATGGGGAAAAGGATCCCGTAATCTTCTGGTGGCCTCCGCATCGTCCATGACCTCATCTCCAGGGAC
TATAGCCTGGGACCCTTTGTGGAGGAGTTGTTTGAAGTGACATCCTGTTATTTCCCTATCGATTTTACC
CCTCCACCTAATGATCCCATGGTATCCAGAGAGAAGACCTCATCCTGAGTCTTCGCGCTGTGCTGGCT
TCTACACCACGATTTGCTGAGTTTCTGCTGCCCTGTTGATTGAGAAAAGTGGATTCTGAGTTTCTGAGT
GCCAAGTTGGATTCTCTACAGACTCTGAATGCTTGCTGTGCTGTGTATGGACAGAAGGAAGTGAAGGAC
TTCCTCCCAGCCTTTGGGCTTCTATCCGCAGAGAGGTGTTCCAGACGGCAAGTGAAGCGGTGGAGGCA
GAGGGCCTGGCGGCCCTCACTCCCTGACTGCGTGTGTTGCTCGCTGTGCTGAGGGCTGATGCTGAG
GACCTCCTTGACTCCTTCTTAGCAACATTCTACAGGACTGCAGGCACCACCTGTGTGAACCGGACATG
AAACTGGTGTGGCTAGTGCCAAGCTGTTGCAGGCAGCTGCAGGTGCATCTGCCCGGCCCTGTGACTCT
GTACCAGCAATGACTGCCTTTACTGTGGAACAGTTCCACAAGCACAGTCAGAGCAGCCAGCGGCCGG
ACAATCCTTGAATGCTCCTGGGTTTCTTGAAGCTGCAGCAGAAAATGGAGCTATGAAGACAAAGATCAA
AGGCCTCTGAATGGCTTCAAGGACCAGCTGTGCTCACTGGTATTCATGGCTCTAACAGACCCAGCACC
CAGCTTACAGTTGTTGGCATCCGTACACTGACAGTCTTGGGTGCCAGCCAGATCTCCTATCTTATGAG
GACTTGGAGCTGGCAGTGGGTACCTGTACAGACTGAGCTTCTGAAGGAGGATTCCAGAGTTGGGTG
GCAGCACTGGAAGCATCAGGAACCCTGGCTGCTCTACCCTGTGGCCTCAGCAGCCACCTCGTACCC
AAGCTCGCTGAGGAGCTGCGTGTAGGGGAGTCAAATTTGACTAACGGAGATGAGCCACCCAATGCTCC
CGCATCTGTGCTGTCTGCAAGCCTTGTACAGTGTATCAACACATCCAGCATCGTCAAGGAGACTG
CCTCTGCTGCTGCAGCATCTCTGGCAAGTGAACAGAGGGAATATGGTTGACAATCCAGTGACGTTATT
GCTGTCTGTGACAGCCTCAGACAGATGGCAGAAAAATGTCAGCAGGACCCTGAGAGTTGCTGGTATTTC
CACCAGACAGCTATACCTTGCTGCTTGCCTTGGCTGTGCAGGCCTCTATGCCAGAGAAGGAGCCCTCA
GTTCTGAGAAAAGTACTATTGGAGGATGAGGTGTTGGCTGCCATGGTGTCTGTCTATTGGCACTGCTACA
ACCCACCTGAGCCCTGAGTTAGCTGCCAGAGTGTGACACACATTGTGCCCTCTTCTTGGATGGCAAC
GTGTCCTTTCTGCCTGAAAACAGCTTCCCGAGCAGATTCCAGCCATTCCAGGATGGCTCCTCAGGGCAG
AGGCGGCTGATTGCACTGCTTATGGCCTTTGTCTGCTCCCTGCCTCGAAATGTGGAAATCCCTCAGCTG
AACCAACTCATGCGGGAGCTTTTGAAGTGAAGTGTGCCACAGCTGCCCTTTTCTTCCACCGCTGCT
GCCAAGTCTTTGCAGGACTCCTCAACAAGCACCTGCAGGGCAGCAGCTGGATGAATCCTACAGCTA
GCTGTGGACAAAGTGGAGGCTGGCCTGGGCTCTGGGCCCTGTCTGAGTCAAGGCCTTCACTCTTCTCTC
TGGGTAACAAAGGCCCTAGTGCTCAGATACCATCCTCTCAGCTCCTGCCTTACAGCCCGGCTCATGGGC
CTCCTGAGTGACCAGAAATTAGTCCAGCAGCAGCTGATGGCTTCTCTCTGCTCATGTCTGACTGCACT
GATGTGCTGACTCGTGTGGCATGCCGAAGTGGGATCATGTTCCGCCAGCGGTTCTTACAGATAAT
GTGCTGCTTTGGTCCAGGGCTTCCATGCTGCTCCCAAGATGTGAAGCCAAACTACTTGAAGGGTCTT
TCTCATGTACTTAACAGGCTGCCAAGCCTGACTCTTGGCAGAGCTGCCACGCTTCTTCTCTTGTCTG
CTGGAGGCCCTGTCTGCCCTGACTGTGTGGTGCAGCTCTCCACCCTCAGCTGCCTTCAAGCCTTCTTA
CTGGAAGCACCCCAAGTCATGAGTCTTACGTGGACACCCTCGTACCAAGTTTCTGAACCTCAGCTCT
AGCCCTTCCATGGCTGTCCGGATCGCCGCACTGCAGTGCATGCATGCTCTCACTCGCTGCCACCCCT
GTGCTGCTGCCGTACAAACCACAGGTGATTCCGGCCTTAGCCAAACCCTGGATGACAAGAAGAGACTG
GTGCGCAAGGAAGCAGTGTACGCCAGAGGGGAGTGGTTTCTGTTGGGAGCCCTGGCAGC
ACGCGTACGCGGCCGCTCGAG – GFP Tag – GTTAAAC
  
```

Protein Sequence: >Peptide sequence encoded by RG239714
 Blue=ORF Red=Cloning site Green=Tag(s)

```

MRTREEELKSLGADFTFGFIQVMDGEKDPNRLLVAFRIVHDLISRDSLGPFVEELFEVTSCYFPIDFT
PPPNDPHGIQREDLILSLRAVLASTPRFAEFLPLLIEKVDSEVLSAKLDSLQTLNACCAVYGQKELKD
FLPSLWASIRREVFQTASERVEAEGLAALHSLTACLSRSVLRADAEDLLDSFLSNILQDCRHHLCPEPDM
KLVWPSAKLLQAAAGASARACDSVTSNVLPLLLEQFHKHSQSSQRRRTILEMLLGFLKLQKQWSYEDKDQ
RPLNGFKDQLCSLVFMAL TDPSTQLQLVGIRTLTVLGAQPDLLSYEDLELAVGHLYRSLFKEDSQSWW
AALEASGTLAALYPVAFSSHLVPKLAEEELRVGESNL TNGDEPTQCSRHL CCLQALSAVSTHPSIVKETL
PLLLQHLWQVNRGNMVAQSSDVI AVCQSLRQMAEKCCQDPESCWYFHQTAIPCLLALAVQASMPEKEPS
VLRKVLLEDEVL AAMVSVIGTATTHLSPELAAQSVTHIVPLFLDGNVSFLPENSFSPRFQPFQDGSSGQ
RRLIALLLMAFVCSLPRNVEIPQLNQLMRELELSCCHSCPFSSTAAAKCFAGLLNKHPAGQQLDEFQL
AVDKVEAGL GSGPCRSQAF TLLWVTKALVLRYPHLS SCLTARLMGLLSDPELGPAAADGFSLLMSDCT
DVLTRAGHAEVRIMFRQRF FTDNVPALVQGFHAAPQDVKPNYLKGLSHVLNRLPKPVLLPELPTLLSLL
LEALSCPDCVVQLSTLSCLQPLLEAPQVMSLHVDTLVTKFLNLSSSPSMAVRIAALQCMHALTRLPTP
VLLPYKPVIRALAKPLDDKKRLVRKEAVSARGEWFLLGSPGS
TRTRPLEMESDESGLPAMEIECRITGTLNGVEFELVGGGEGTPEQGRMTNKMKSTKGALTFSPYLLSHV
MGYGFYHFGTYPSTYSGYENPFLHAINNGGYTNTRIEKYEDGGVLHVSFSYRYEAGRVIGDFKVMGTGFPEP
SVIFTDKIIIRSNATVEHLHPMGDNDLDGSFTRTFSLRDGGYSSVVDSHMHFKA IHP SILQNGGPMFA
FRRVEEDHSNTELGIVEYQHAFKTPDADAGEERV
  
```

Restriction Sites: Sgfl-Mlul

Cloning Scheme:


ACCN: NM_001289404

ORF Size: 2613 bp

OTI Disclaimer: The molecular sequence of this clone aligns with the gene accession number as a point of reference only. However, individual transcript sequences of the same gene can differ through naturally occurring variations (e.g. polymorphisms), each with its own valid existence. This clone is substantially in agreement with the reference, but a complete review of all prevailing variants is recommended prior to use. [More info](#)

OTI Annotation: This clone was engineered to express the complete ORF with an expression tag. Expression varies depending on the nature of the gene.

Components: The ORF clone is ion-exchange column purified and shipped in a 2D barcoded Matrix tube containing 10ug of transfection-ready, dried plasmid DNA (reconstitute with 100 ul of water).

RefSeq: [NM_001289404.1](#), [NP_001276333.1](#)

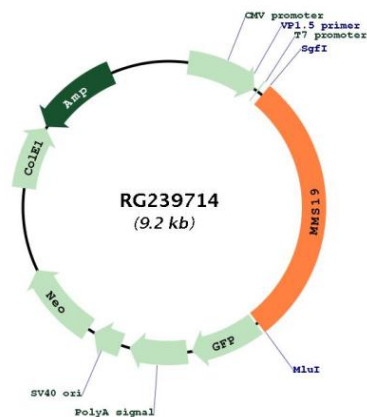
RefSeq Size: 3639 bp

RefSeq ORF: 2616 bp

Locus ID: 64210
UniProt ID: [Q96T76](#)
Cytogenetics: 10q24.1
Protein Families: Druggable Genome, Transcription Factors
MW: 96.6 kDa

Gene Summary: Key component of the cytosolic iron-sulfur protein assembly (CIA) complex, a multiprotein complex that mediates the incorporation of iron-sulfur cluster into apoproteins specifically involved in DNA metabolism and genomic integrity. In the CIA complex, MMS19 acts as an adapter between early-acting CIA components and a subset of cellular target iron-sulfur proteins such as ERCC2/XPD, FANCI and RTEL1, thereby playing a key role in nucleotide excision repair (NER), homologous recombination-mediated double-strand break DNA repair, DNA replication and RNA polymerase II (POL II) transcription (PubMed:22678362, PubMed:22678361, PubMed:29225034, PubMed:23585563). As part of the mitotic spindle-associated MMXD complex, plays a role in chromosome segregation, probably by facilitating iron-sulfur cluster assembly into ERCC2/XPD (PubMed:20797633). Indirectly acts as a transcriptional coactivator of estrogen receptor (ER), via its role in iron-sulfur insertion into some component of the TFIIH-machinery (PubMed:11279242).[UniProtKB/Swiss-Prot Function]

Product images:



Circular map for RG239714