

## Product datasheet for **RG239706**

### **Dynamin 1 (DNM1) (NM\_001288739) Human Tagged ORF Clone**

#### **Product data:**

Product Type:	Expression Plasmids
Product Name:	Dynamin 1 (DNM1) (NM_001288739) Human Tagged ORF Clone
Tag:	TurboGFP
Symbol:	DNM1
Synonyms:	DEE31; DNM; EIEE31
Mammalian Cell Selection:	Neomycin
Vector:	pCMV6-AC-GFP (PS100010)
E. coli Selection:	Ampicillin (100 ug/mL)



[View online »](#)

**ORF Nucleotide Sequence:**

>RG239706 representing NM\_001288739.  
 Blue=ORF Red=Cloning site Green=Tag(s)

```

GCTCGTTTAGTGAACCGTCAGAATTTTGTAAACGACTCACTATAGGGCGGCCGGGAATTCGTGACTG
GATCCGGTACCGAGGAGATCTGCCGCCCGCATCGCC
ATGGGCAACCCGCGCATGGAAGATCTCATCCCGCTGGTCAACCGGCTGCAAGACGCCTTCTCTGCCATC
GGCCAGAACCGGACCTCGACCTGCCGAGATCGCTGTGGTGGGCGGCCAGAGCGCCGCAAGAGCTCG
GTGCTCGAGAATTCGTAGGCAGGGACTTCTTGCCTCGAGGATCTGGCATTGTCACCCGACGTCCCTTG
GTCTTGACAGTGGTCAATGCAACCACAGAATATGCCGAGTTCTGCACTGCAAGGAAAAGAAATTCACC
GACTTCGAGGAGGTGCGCCTTGAGATCGAGGCCGAGACCGACAGGGTACCCGGCACCAACAAGGGCATC
TCGCCGGTGCCTATCAACCTCCGCGTCTACTCGCCGACGTGCTGAACCTGACCTGGTGGACCTGCC
GGAATGACCAAGGTCCCGTGGGGACCAACCTCCGACATCGAGTTCAGATCCGAGACATGCTTATG
CAGTTTGTACCAAGGAGAACTGCCTCATCTGGCCGTGTCCCCGCCAACTCTGACCTGGCCAATTCT
GACGCCCTCAAGGTGCGCAAGGAGGTGGACCCCAAGGCCAGCGCACCATCGGGGTATACCAAGCTG
GACCTGATGGACGAGGGACAGATGCCCGTGTGTGCTGGAGAACAAGCTGCTCCCTGCGCAGAGGC
TACATTGGAGTGGTGAACCGGAGCCAGAAGGACATTGATGGCAAGAAGGACATTACCGCCGCTTGCT
GCTGAACGAAAAGTTCTTCTCTCCATCCATCTTATCGCCACTTGGCTGACCGTATGGGCACGCCCTAC
CTGCGAAGGTCTCAATCAGCAACTGACGAACCACATCCGGGACACACTGCCGGGGCTGCGGAACAAG
CTGCGAGCCAGCTACTGTCCATTGAGAAGGAGGTGGAGGAATACAAGAACTTCCGCCCTGATGACCCA
GCTCGAAGACCAAGGCCCTGCTGCAGATGGTCCAGCAGTTCCCGTAGACTTTGAGAAGCGCATTGAG
GGCTCAGGAGATCAGATCGACACCTACGAAGTGTGAGGGGAGCCCGCATTAAACCGAATCTTCCACGAG
CGCTTCCCTTTCGAGCTGGTCAAGATGGAGTTTGATGAGAAGGAACTCCGAAGGGAGATCAGTATGCT
ATCAAGAATATCCATGGCATTAGGACGGCCCTTTCACACCTGACCTCGCTTTTGAAGCCACAGTAAA
AAGCAGGTGCAGAAGCTCAAAGAGCCAGTATCAAGTGTGTGGATATGGTAGCTGAGCTCACAGCC
ACCATCAGAAAAGTGTAGCGAAAAGCTCCAGCAGTACCCGCGGCTACGGGAGGAGATGGAGCGCATCGTG
ACCACCCACATCCGGGAGCGCGAGGGCCGCACTAAGGAGCAGGTATGCTTCTCATCGATATCGAGCTG
GCTTACATGAACACCAACCATGAGGACTTCATAGGCTTTGCCAATGCTCAGCAGAGGAGCAACCAGATG
AACAGAAGAAGACTTCAGGGAACCAGGATGAGATTCTGGTATCCGCAAGGGCTGGTGACTATCAAT
AATATTGGCATCATGAAAGGGGGCTCAAGGAGTACTGGTTTGTGCTGACTGCTGAGAATCTGCTCTGG
TACAAGGATGATGAGGAGAAAGAGAAGAAATACATGCTGTCTGTGGACAACCTCAAGCTGCGGGACGTG
GAGAAGGGCTTTATGTCGAGCAAGCATATCTTTGCCCTTTAACACGGAGCAGAGGAATGTCTACAAG
GATTATCGGCAGCTGGAGCTAGCCTGTGAGACACAGGAGGAGGTGGACAGCTGGAAGGCCTCCTTCTG
AGGGCTGGCGTGTACCCTGAGCGTGTGGGGACAAAGAGAAAGCCAGCGAGACCGAGGAGAATGGCTCC
GACAGTTCATGCATTCCATGGACCCACAGCTGGAACGGCAAGTGGAGACCATCCGGAATCTTGTGGAC
TCATACATGGCCATTGTCAACAAGACCGTGAAGGACCTCATGCCAAGACCATCATGCACCTCATGATT
ACAATAACCAAGGAGTTCATCTTCTCGAGCTGCTGGCCAACCTGTACTCGTGTGGGGACCAAGAACG
CTGATGGAGGAGTCGGCGGAGCAGGCACAGCGCGCAGAGATGCTGCGCATGTACCACGCACTGAAG
GAGGCGCTCAGCATCATCGCGGACATCAACACGACACCGTCAAGCAGCCCATGCCCCGCGCCGTCGAC
GACTCTGGCTGCAGGTGCAGAGCGTACCGCCGAGCAGGTGCGCCACGTCCAGCCCCACGCCCGCAG
CGCCGAGCCCCCGCTGCCCCAGCCCGCCGGTCCGCGGGCCCTGCTCCTGGGCCTCCGCTGCT
GGTCCGCCCTGGGGGGGCGCCCCCGTGCCTCCAGGCCGGGGCTTCCCTGACCTTTTCGGCCCT
CCCCCTCAGGTGCCCTCGCGCCCAACCGCCCGCCGGGTCCCGAGCCGATCGGGTCAAGCAAGT
CCATCCCGTCTGAGAGCCCCAGGCCCCCTTCGACCTC
ACGCGTACGCGGCCGCTCGAG - GFP Tag - GTTAAAC
  
```

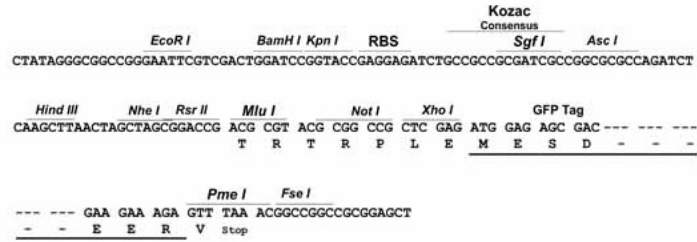
**Protein Sequence:** >Peptide sequence encoded by RG239706  
 Blue=ORF Red=Cloning site Green=Tag(s)

MGNRGMEDLIPLVNRLQDAFSAIGQNADLDLPQIAVVGGSAGKSSVLENFVGRDFLPRGSGIVTRRPL  
 VLQLVNATTEYAEFLHCKGKKFTDFEEVRLIEAETDRVTGNTKGISPVPINLRVYSPHVLNLTLDLP  
 GMTKVPVGDQPPDIEFQIRDMLMQFVTKENCLILAVSPANSDLANSDALKVAKEVDPQGQRTIGVITKL  
 DLMDEGTDARDVLENKLLPLRRGYIGVNRSQKDIDGKKDITAALAAERKFFLSHPSYRHLADRMGTPY  
 LQKVLNQQLTNHIRDTLPLRLRNKLSQLLSIEKEVEEYKNFRPDDPARKTKALLQMVQQFAVDFEKRIE  
 GSGDQIDTYELSGGARINRIFHERFPFELVKMEFDEKELRREISYAIKNIHGIRTGLFTPDLAFEATVK  
 KQVQKLKEPSIKCVMVSELTATIRKCSEKLQQYPRLREEMERIVTTHIREREGRTKEQVMLLIDIEL  
 AYMNTNHEDFIGFANAQQRSNQMKNKKTSGNQDEILVIRKGWLTINNIGIMKGGKEYWFLTAENLSW  
 YKDDEEKEKMYLSVDNLKLRDVEKGFMSKHIFALFNTEQRNVYKDYRQLELACETQEEVDSWKASFL  
 RAGVYPERVGDKEKASETEENGSDSFMSMDPQLERQVETIRNLVDSYMAIVNKTVRDLMPKTIHMLMI  
 NNTKEFIFSELLANLYSCGDQNTLMEESAQAQRREMLRMYHALKEALSIIGDINTTTVSTPMPPPV  
 DSWLQVQSVAPARRSPTSSPTPQRRAPVPPARPGSRGAPGPPPPAGSALGGAPPVPSRPGASDPDFGP  
 PPQVPSRPNRAPPGVPSRSGQASPSRPEPRPPFDL  
 TRTRPLEMESDESGLPAMEIECRITGTLNGVEFELVGGGEGTPEQGRMTNKMSTKGALTFSPYLLSHV  
 MGYGFYHFGTYPSTYENPFLHAINNGGYNTRIEKYEDGGVLHVSFSYRYEAGRVIGDFKVMGTGFPE  
 SVIFTDKIIIRSNATVEHLHPMGDNDLDGSFTRTFSLRDGGYSSVVDSHMHFKSAIHPSILQNGGPMFA  
 FRRVEEDHSNTELGIVEYQHAFKTPDADAGEERV

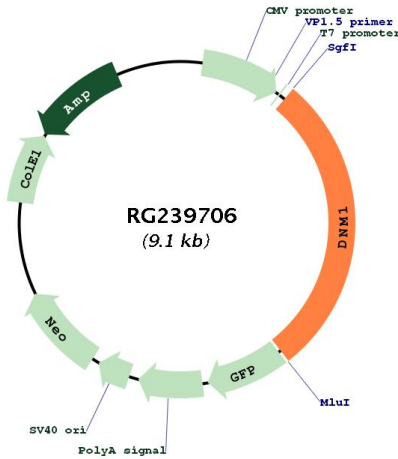
**Restriction Sites:** Sgfl-MluI

Cloning Scheme:

Cloning sites used for ORF Shutting:



Plasmid Map:



ACCN:

NM\_001288739

<b>ORF Size:</b>	2592 bp
<b>OTI Disclaimer:</b>	The molecular sequence of this clone aligns with the gene accession number as a point of reference only. However, individual transcript sequences of the same gene can differ through naturally occurring variations (e.g. polymorphisms), each with its own valid existence. This clone is substantially in agreement with the reference, but a complete review of all prevailing variants is recommended prior to use. <a href="#">More info</a>
<b>OTI Annotation:</b>	This clone was engineered to express the complete ORF with an expression tag. Expression varies depending on the nature of the gene.
<b>Components:</b>	The ORF clone is ion-exchange column purified and shipped in a 2D barcoded Matrix tube containing 10ug of transfection-ready, dried plasmid DNA (reconstitute with 100 ul of water).
<b>RefSeq:</b>	<a href="#">NM_001288739.2</a>
<b>RefSeq Size:</b>	3260 bp
<b>RefSeq ORF:</b>	2595 bp
<b>Locus ID:</b>	1759
<b>UniProt ID:</b>	<a href="#">Q05193</a>
<b>Cytogenetics:</b>	9q34.11
<b>Protein Families:</b>	Druggable Genome
<b>Protein Pathways:</b>	Endocytosis, Fc gamma R-mediated phagocytosis
<b>MW:</b>	97.7 kDa
<b>Gene Summary:</b>	This gene encodes a member of the dynamamin subfamily of GTP-binding proteins. The encoded protein possesses unique mechanochemical properties used to tubulate and sever membranes, and is involved in clathrin-mediated endocytosis and other vesicular trafficking processes. Actin and other cytoskeletal proteins act as binding partners for the encoded protein, which can also self-assemble leading to stimulation of GTPase activity. More than sixty highly conserved copies of the 3' region of this gene are found elsewhere in the genome, particularly on chromosomes Y and 15. Alternatively spliced transcript variants encoding different isoforms have been described. [provided by RefSeq, Jul 2008]