

Product datasheet for **RG239704**

TOP3B (NM_001282113) Human Tagged ORF Clone

Product data:

Product Type:	Expression Plasmids
Product Name:	TOP3B (NM_001282113) Human Tagged ORF Clone
Tag:	TurboGFP
Symbol:	TOP3B
Synonyms:	TOP3B1
Mammalian Cell Selection:	Neomycin
Vector:	pCMV6-AC-GFP (PS100010)
E. coli Selection:	Ampicillin (100 ug/mL)



[View online »](#)

ORF Nucleotide Sequence:

>RG239704 representing NM_001282113.
 Blue=ORF Red=Cloning site Green=Tag(s)

```

GCTCGTTTAGTGAACCGTCAGAATTTTGTAAACGACTCACTATAGGGCGGCCGGGAATTCGTGACTG
GATCCGGTACCGAGGAGATCTGCCGCCGCGATCGCC
ATGAAGACTGTGCTCATGGTTGCTGAAAAGCCGTCCTTGGCACAGTCAATTGCCAAAATCCTCTCTAGA
GGGAGCTGTCCACACAAAGGGCTGAACGGGGCCTGCTCAGTCCACGAGTACACTGGGACCTTTGCT
GGCCAGCCAGTGCCTCAAGATGACGTCTGTCTGTGGTACGTGATGACCCTGGATTTCTGGGAAAA
TACAACAATGGGACAAAGTGGACCCCGCAGAAGTGTTCAGCAGCTCCACGGAGAAGAAAGAAGCT
AACCCCAAGCTGAACATGGTGAAGTTCTCGAGGTGGAGGGCAGAGGCTGCGACTACATCGTGTGTGG
CTGGACTGCGACAAGGAGGGGAGAACATCTGCTTTGAGGTTCTTGATGCTGTTCTGCCGTCATGAAC
AAGGCCATGGTGGGAGAAGACCGTGTCCGGGCCAGGTTTAGCTCCATCACGGACACAGACATCTGT
AATGCCATGGCCTGCCTAGGCGAGCCTGACCACAACGAGGCGCTCTCAGTGGATGCTGCCAGGAGCTG
GACCTGCGAATCGGCTGTGATTACCAGGTTTACAGCTAAATATTTCCAGGGGAAATACGGTGATTTA
GACAGCTCTCTCATCTCCTTTGGGCGGTGTCAGACTCCAACCCTGGGATTCTGTGTGGAGAGACATGAT
AAAATCCAGTCTTCAAACCAGAGACCTACTGGGTGCTGCAGGCCAAGGTTAACACTGACAAAGACAGA
TCTCTCCTTTGGACTGGGACCGAGTAAGAGTGTTTGACCGGGAGATCGCACAGATGTTTTAAACATG
ACAAAGCTGGAGAAGGAAGCCAGGTGGAGGCCACAAGCAGGAAAGAAAAGGCCAAGCAGAGGCCCTG
GCCCTGAACACTGTGGAGATGCTGCGTGTGGCCAGCTCTTCTCTGGGCATGGGGCCGAGCACGCCATG
CAGACGGCTGAGCGGCTCTACACGCAAGGCTACATCAGCTACCCACGGACAGAGACCACCCACTACCT
GAGAATTTGACTGAAGGGCTCTTGCAGCAGGCAACACCCCTACTGGGCCGACACGGTGAAG
CGGTTGTTAGCAGAAGGTATCAACCGCCCGGAAAGGCCATGACGCCGGCGACCATCCCCCATCACC
CCATGAAGTCTGCCACAGAGGCCGAATTAGGGGTGACGCGTGGCGGCTCTATGAGTACATCACCAGA
CACTTCATCGCCACGGTACGCCATGACTGCAAGTACCTGCAGAGCACCATCTCCTCAGAATTGGGCC
GAGCTCTTACCTGCTCCGGGAAGACCGTCTCTCACCAGGCTTACGGAGGTATGCCCTGGCAGAGC
GTGCCCTGGAGGAGAGCCTGCCCACTTCCAGCGGGGTGATGCCTTCCCTGTGGGCGAGGTGAAGATG
CTGGAGAAGCAGACGAACCCACCCGACTACCTGACGGAGGCCGAGCTCATCACGCTCATGGAGAAGCAT
GGCATCGGCACGGATGCCAGCATCCCTGTGCATATCAACAACATCTGCCAGCGCAACTATGTCACGGTG
GAGAGCGGGCGCCGGCTCAAGCCACCAACCTCGGCATCGTCTGGTGCACGGCTACTATAAGATTGAT
GCAGAGCTGGTGTCCCCACCATCCGAGTGCAGTGGAGAAGCAGCTGAACCTGATCGCCAGGGCAAG
GCCGACTACCGCCAGGTCTGGGCCACACCTGGACGTGTCAAGAGGAAGTTCCACTACTTTGTGCAC
TCCATTGCTGGCATGGATGAGTTGATGGAGGTGCTTTCTCGCCCTGGCGGCCACAGGCAAGCCCCCTC
TCACGCTGTGGGAAGTGCCACCGCTTATGAAGTACATCCAGGCCAAGCCAAGCCGCTGCACTGTCTCC
CACTGCGATGAGACCTACACGCTCCCCAGAACGGCACCATCAAGCTCTACAAGGAGCTCCGCTGCCCT
CTGGATGACTTCGAGCTGGTCTGTGGTTCATCAGGCTCTCGGGCAAGAGCTACCCGCTGTGCCCTAC
TGCTACAAACCACCACCTTCCGAGACATGAAGAAAGGCATGGGCTGCAACGAGTGTACGCACCCCTCC
TGCCAGCACTCGTGAGCATGCTGGGCATCGGCCAGTGCCTGGAATGTGAGAGCGGGGTGCTGGTGTG
GACCCCACTCGGGCCCCAAGTGAAGGTGGCCTGCAACAAGTGAACGTGGTAGCGCACTGCTTCGAG
AAGCCCCACCGCTGCGGGTGTCCGCGACACCTGCAGTGTCTGTGAGGCCGCTTGTGATGTGGAC
TTCAACAAGGCCAAGTCCCCTCCCGGGCGATGAGACGACGACATGGGCTGCGTCTTTGTGACCCC
GTCTTCCAGGAGCTGGTGGAGCTGAAGCATGCGGCCTCCTGCCACCCATGCACCGCGGTGGACAGGG
AGAAGGCAGGGTCGAGGGCGGGCCGGGCCAGGAGGCCCTGGGAAGCCCAACCCAGACGGCCCAAG
GACAAGATGTCAGCCCTGGCCGCTACTTTGTA
AGCGGACCGACGCGTACGCGGCCGCTCGAG - GFP Tag - GTTTAAAC
  
```

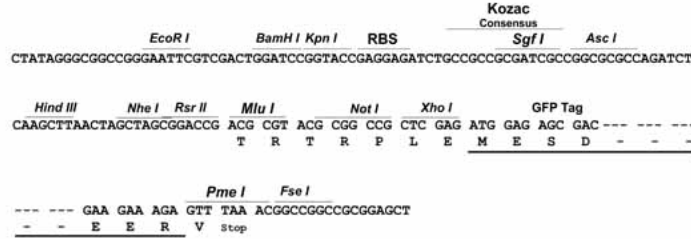
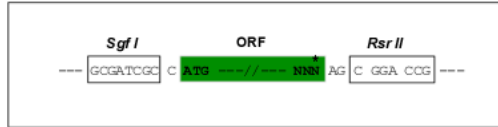
Protein Sequence: >Peptide sequence encoded by RG239704
 Blue=ORF Red=Cloning site Green=Tag(s)

MKTVLMVAEKPSLAQSIKILSRGSLSSHKGLNGACSVHEYTGTFAGQPVRFKMTSVCGHVMTLDFLGK
 YNKWDKVDPAELFSQAPTEKKEANPKLNMVKFLQVEGRGCDYIVLWDCDKEGENICFEVLDAVLPVMN
 KAHGGEKTVFRARFSSITDTICNAMAELGEPDHNEALSVDARQELDLRIGCAFTRFQTKYFQGYGDL
 DSSLISFGPCQPTLGFCEVERHDKIQSFKPETYWVLQAKVNTDKDRSLLLDWDRVRFVDREIAQMFLNM
 TKLEKEAQVEATSRKEKAKQRPLALNTVEMLRVASSSLGMPQHMQTAERLYTQGYISYPRTEETHYP
 ENFDLKGSLRQQANHPYWADTVKRLLAEGINRPRKGDAGDHPPITPMKSATEAELGGDAWRLYEYITR
 HFIAVSHDCKYLQSTISFRIGPELFTCSGKTVLSPGFTEVMPWQSVPLEESLPTCQRGDAFPVGEVKM
 LEKQTNPPDYLTEAELITLMEKHGIGTDASIPVHINNICQRNYVTVESGRRLKPTNLGIVLVHGYKID
 AELVLPTIRSAVEKQLNLIAQGKADYRQVLGHTLDVFKRKFHYFVDSIAGMDELMEVSFSPLAATGKPL
 SRCGKCHRFMKYIQAKPSRLHCSHCDETYTLPQNGTIKLYKELRCPLDDFELVLWSSGSRGKSYPLCPY
 CYNHPPFRDMKKGMGCNECTHPSCQHLSMLGIGQCVCESEGLVLDPTSGPKWKVACNKCNVVAHCFE
 NAHRVRSADTCSVCEAALLDVFNFKAKSPLPGDETQHMGCVFCDPVFQELVELKHAASCHPMHRRGGPG
 RRQGRGRGRARRPPGKPNRRPKDKMSALAAFYV
 SGPTRTRPLEMESDESGLPAMEIECRITGTLNGVEFELVGGGEGTPEQGRMTNKMKSTKGALTFSPYLL
 SHVMGYGFYHFGTYPSGYENPFLHAINNGGYTNTRIEKYEDGGVLHVFSYRYEAGRVIGDFKVMGTGF
 PEDSVIFTDKIIRSNAIVEHLHPMGDNDLDGSFTRTFLRDGGYSSVVDSHMHFKSAIHPSILQNGGP
 MFAFRRVEEDHSNTELGIVEYQHAFKTPDADAGEERV

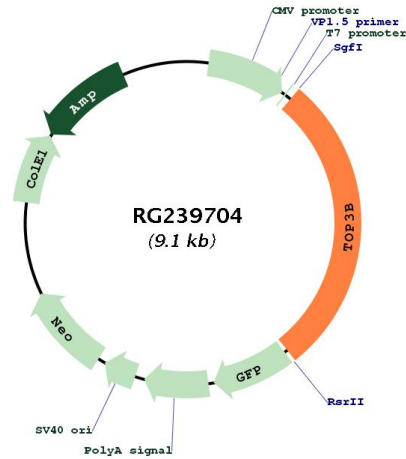
Restriction Sites: Sgfl-RsrII

Cloning Scheme:

Cloning sites used for ORF Shuttling:



Plasmid Map:



ACCN:

NM_001282113

ORF Size:	2586 bp
OTI Disclaimer:	The molecular sequence of this clone aligns with the gene accession number as a point of reference only. However, individual transcript sequences of the same gene can differ through naturally occurring variations (e.g. polymorphisms), each with its own valid existence. This clone is substantially in agreement with the reference, but a complete review of all prevailing variants is recommended prior to use. More info
OTI Annotation:	This clone was engineered to express the complete ORF with an expression tag. Expression varies depending on the nature of the gene.
Components:	The ORF clone is ion-exchange column purified and shipped in a 2D barcoded Matrix tube containing 10ug of transfection-ready, dried plasmid DNA (reconstitute with 100 ul of water).
RefSeq:	NM_001282113.2
RefSeq Size:	2901 bp
RefSeq ORF:	2589 bp
Locus ID:	8940
UniProt ID:	O95985
Cytogenetics:	22q11.22
Protein Pathways:	Homologous recombination
MW:	96.7 kDa
Gene Summary:	This gene encodes a DNA topoisomerase, an enzyme that controls and alters the topologic states of DNA during transcription. This enzyme catalyzes the transient breaking and rejoining of a single strand of DNA which allows the strands to pass through one another, thus relaxing the supercoils and altering the topology of DNA. The enzyme interacts with DNA helicase SGS1 and plays a role in DNA recombination, cellular aging and maintenance of genome stability. Low expression of this gene may be related to higher survival rates in breast cancer patients. This gene has a pseudogene on chromosome 22. Alternate splicing results in multiple transcript variants. Additional alternatively spliced transcript variants of this gene have been described, but their full-length nature is not known. [provided by RefSeq, Aug 2013]