

Product datasheet for **RG239701**

BRD8 (NM_001300961) Human Tagged ORF Clone

Product data:

Product Type:	Expression Plasmids
Product Name:	BRD8 (NM_001300961) Human Tagged ORF Clone
Tag:	TurboGFP
Symbol:	BRD8
Synonyms:	p120; SMAP; SMAP2
Mammalian Cell Selection:	Neomycin
Vector:	pCMV6-AC-GFP (PS100010)
E. coli Selection:	Ampicillin (100 ug/mL)



[View online »](#)

ORF Nucleotide Sequence:

>RG239701 representing NM_001300961.
 Blue=ORF Red=Cloning site Green=Tag(s)

```

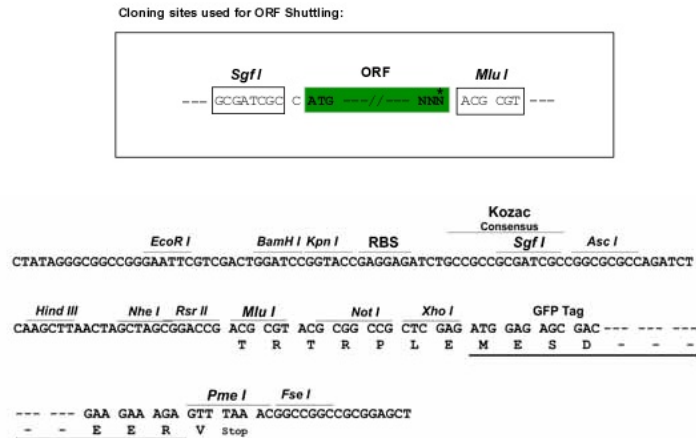
GCTCGTTTAGTGAACCGTCAGAATTTTGTAAACGACTCACTATAGGGCGGCCGGGAATTCGTGCGACTG
GATCCGGTACCGAGGAGATCTGCCGCCCGCATCGCC
ATGGTCCATCCGAGAGAAGCTATGTTTAGCATCTTCTGTCATGAGAAGTGGCGATCAAAATTGGTAAGG
GTATCAGTTAGCAGAGCAATCAAGCCCTTTGCAGAACCTGGCCGCCCTCCAGACTGGTTCTCTCAAAA
CATTGTGCTTCCAGTACTCGGAGCTTTTAGAGACCACTGAGACACCAAAACGGAAACGAGGTGAAAAG
GGAGAAGTGGTGGAAACTGTTGAAGATGTTATTGTTTCGAAATTGACTGCTGAGCGAGTTGAAGAACTA
AAGAAAGTGATAAAGGAAACCCAGGAGAGATATAGACGGCTAAAGAGAGATGCAGAACTAATTCAAGCT
GGACACATGGACAGCAGACTGGATGAGCTTTGCAATGACATTGCAACGAAAAAGAAATTGGAAGAAGAG
GAGGCTGAAGTAAAGAGGAAGGCTACAGATGCTGCATACCAGGCTCGTCAAGCAGTAAAAACACCCCC
CGGAGGTTACCCACTGTGATGGTTCGCTCTCTATAGATTCTGCCTCCCAGGAGGTGATTATCCACTT
GGGACTTGACTCCAACCACTATGGAAGAGGCTACCTCTGGGGTCAATGAGAGTAAATGGCTGTGGCT
TCTGGCCACCTGAACAGTACAGGTGCTCCTCTGGAGGTAGCGGGGTCTTCCCATGATACATGGTGGG
GAGATACAGCAACACCCAATACTGTTGCAGCCTCCCCTGCTGCATCAGGTGCTCCCACTTTTCCCGG
CTTTTAGAAGCTGGTCTACACAGTTCACCACACCTCTTGCTTCTTCACTACTGTTGCCAGTGAGCCT
CCAGTAAACTTGTGCCACCCCTGTAGAGTCTGTGTCCCAAGCTACCATTGTCATGATGCCTGCCTG
CCAGCACCATCTCTGCTCCGGCTGTCTCCACTACTGAAAGTGTAGTCCAGTGAGTCAACCCGACAAC
TGTGTTCCCATGGAGGCTGTGGGGGATCCACATACTGTGACTGTTTCCATGGACAGCAGTGAAATATCC
ATGATCATCAATTCTATCAAAGAAGAGTGTTCGATCAGGGGTAGCAGAGGCTCCTGTTGGATCAAAG
GCTCCCAGCATAGATGGGAAGGAAGAATTAGATCTGGCTGAGAAGATGGATATTGCTGTGCTTACACA
GGTGAAGAGCTGGATTTTGGAGACTGTTGGAGACATCATTGCCATCATTGAGGACAAGGTAGATCAT
CCTGAAGTGTGATGTGGCAGCAGTGGGAAGCAGCACTGTCATTTTGTGAAGAAAATGATGATCCTCAG
TCCTGCCTGGCCCTGGGAGCATCCTATCCAGCAGGAGCGGACAAGCCAGTACCTCTCCTGCACCA
GAAATGACGGTCAAGCAAGAGAGACTGGACTTTGAGGAAACGGAAAAACAAGGGAATACATGAACTGGTG
GACATCAGGGAGCCAGTGCAGAGATCAAGGTGGAACCTGCAGAACCAGAGCCAGTCATTTAGGAGCC
GAAATAGTAGCTGGAGTTGTTCCAGCCACAAGTATGGAGCCACCAGAACTCAGGAGTCAAGACTTAGAT
GAGGAAGTGGGAAGTACTGCAGCTGGAGAGATTGTTGAAGCAGATGTTGCCATTGGGAAAGGCGATGAG
ACTCCACTTACAAATGTGAAGACAGAGGCATCCCCTGAAAGCATGTTGTCTCCATCAGTGGCTCAAAT
CCCATTGAAGATCCTTTAGAGGCAGAGACTCAGCACAAAGTTTGAATGTCAGACTCATTGAAAGAAGAA
TCAGGGACTATTTTGGAAAGCCAGATAAAGGATGCCCCAGGTGAGGATGAGGAGGAAGATGGTGTCAAGT
GAAGCGGCCAGCCTAGAGGAGCCTAAGGAAGAGGATCAAGGAGAAGGCTACTTGTGAGAAATGGATAAT
GAACCTCCTGTGAGCGAGAGTGTGATGGCTTACAGATACACAATGCTACACTGCAGTACACACACTG
GCAGACTCCATCCCAGCAGCCCTGCTTCTTACAGTCTCTGTCTGTAGTGAGGATCAGGAAGCTATT
CAGGCACAGAAAATTTGGAAGAAAGCCATCATGCTTGTATGGAGAGCTGCAGCTAATCATAGGTATGCC
AATGCTTCTCTGCAGCCTGTTACAGATGACATAGCACCTGGCTACCACAGCATTGTGCAGAGGCCTATG
GATTTGTCAACTATTAAGAAAAACATAGAAAATGGACTGATCCGAAGCACAGCTGAATTTACGCGTGAC
ATTATGCTGATGTTTTCAGAACTGTAATGTACAATAGCTCAGACCATGATGCTATCACATGGCAGTG
GAGATGCAGCGAGATGTCTTGGAAACAGATCCAGCAATTCTTGGCCACGCAGTTGATTATGCAAAACATCC
GAGTCTGGGATCAGTGTCTAAAAGTCTTCGAGGGAGAGATTCTACCCGCAACAGGATGCTTCAGAGAAG
GACAGTGTCCCAATGGGCTCTCCTGCCTTCTCTCTCTCTTTGATGGAGGAACCAGGGGACGCCCG
TGTGCCATTGAAGCAGATATGAAGATGAAAAAG
ACGCGTACGCGGCCGCTCGAG - GFP Tag - GTTTAAAC
  
```

Protein Sequence: >Peptide sequence encoded by RG239701
 Blue=ORF Red=Cloning site Green=Tag(s)

```

MVHPREAMFSIFCHEKWRSKLVRVSVSRAIKPFAEPGRPPDWFSSQKHCASQYSELLETETPKRKRGEK
GEVVETVEDVIVRKLTAERVEELKKVIKETQERYRRLKRDAELIQAGHMDSRLDELCNDIATKKKLEEE
EAEVKRKATDAAYQARQAVKTPRRRLPTVMVRSPIDSASPGGDYPLGDLTPTTMEEATSGVNESEMAVA
SGHLNSTGVLLLEVGGVLPMIHGGEIQQTPNTVAASPAASGAPTLRRLLEAGPTQFTTPLASFTTVASEP
PVKLVPPPVESVSQATIVMMPALPAPSSAPAVSTTESVAPVSQPDNCVPMEAVGDPHTVTVSMDSEIS
MIINSIKEECFRSGVAEAPVGSKAPSIDGKEELDLAEKMDIAVSYTGEELDFETVGDIIAIEDKVDDH
PEVLDVAAVEAALSFCEENDDPQSLPGPWEHPIQQERDKPVPLPAPEMTVKQERLDFEETENKGIHEL
DIREPSAEIKVEPAEPEPVISGAEIVAGVVPATSMPEPELRSQDLDEELGSTAAGEIVEADVAIGKGDE
TPLTNVKTEASPESMLSPSHGSNPIEDPLEAETQHKFEMSDSLKEESGTFGFSQIKDAPGEDEEEDGVS
EAASLEEPKEEDQGEGYLSMDNEPPVSESDGFSIHNATLQSHTLADSISSPASSQFVCSQEDQEI
QAQKIWKKAIMLVWRAAANHRYANVFLQPVTDDIAPGYHSIVQRPMDLSTIKKNIENGLIRSTAEFQRD
IMLMFQNAVMYNSSDHDVYHMAVEMQRDVLEQIQQLATQLIMQTSSESGISAKSLRGRDSTRKQDASEK
DSVPMGSPAFLLSLFDGGTRGRRCAIEADMKMKK
TRTRPLEMESDESGLPAMEIECRITGTLNGVEFELVGGGEGTPEQGRMTNKMSTKGALTFSPYLLSHV
MGYGFYHFGTYPSTYENPFLHAINNGGYTNTRIEKYEDGGVLHVSFSYRYEAGRVIGDFKVMGTGFPEP
SVIFTDKIIRSNATVEHLHPMGDNDLDGSFTRTFSLRDGGYSSVVDSSHMFKSAIHPSILQNGGPMFA
FRRVEEDHSNTELGIVEYQHAFKTPDADAGEERV
  
```

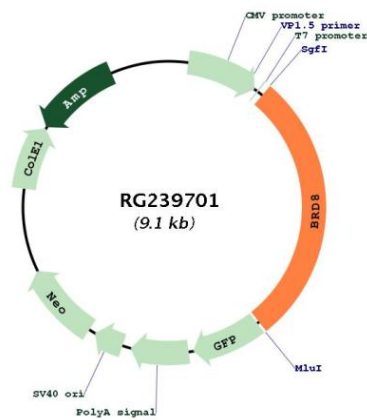
Restriction Sites: Sgfl-MluI

Cloning Scheme:


- ACCN:** NM_001300961
- ORF Size:** 2586 bp
- OTI Disclaimer:** The molecular sequence of this clone aligns with the gene accession number as a point of reference only. However, individual transcript sequences of the same gene can differ through naturally occurring variations (e.g. polymorphisms), each with its own valid existence. This clone is substantially in agreement with the reference, but a complete review of all prevailing variants is recommended prior to use. [More info](#)
- OTI Annotation:** This clone was engineered to express the complete ORF with an expression tag. Expression varies depending on the nature of the gene.
- Components:** The ORF clone is ion-exchange column purified and shipped in a 2D barcoded Matrix tube containing 10ug of transfection-ready, dried plasmid DNA (reconstitute with 100 ul of water).
- RefSeq:** [NM_001300961.2](#)
- RefSeq Size:** 3039 bp
- RefSeq ORF:** 2589 bp

Locus ID: 10902
UniProt ID: [Q9H0E9](#)
Cytogenetics: 5q31.2
Protein Families: Druggable Genome, Transcription Factors
MW: 94.4 kDa
Gene Summary: The protein encoded by this gene interacts with thyroid hormone receptor in a ligand-dependent manner and enhances thyroid hormone-dependent activation from thyroid response elements. This protein contains a bromodomain and is thought to be a nuclear receptor coactivator. Multiple alternatively spliced transcript variants that encode distinct isoforms have been identified. [provided by RefSeq, Jul 2014]

Product images:



Circular map for RG239701