

## Product datasheet for **RG239694**

### Epac2 (RAPGEF4) (NM\_001282899) Human Tagged ORF Clone

#### Product data:

Product Type:	Expression Plasmids
Product Name:	Epac2 (RAPGEF4) (NM_001282899) Human Tagged ORF Clone
Tag:	TurboGFP
Symbol:	RAPGEF4
Synonyms:	CAMP-GEFII; CGEF2; EPAC; EPAC 2; EPAC2; Nbla00496
Mammalian Cell Selection:	Neomycin
Vector:	pCMV6-AC-GFP (PS100010)
E. coli Selection:	Ampicillin (100 ug/mL)



[View online »](#)

**ORF Nucleotide Sequence:**

>RG239694 representing NM\_001282899.  
 Blue=ORF Red=Cloning site Green=Tag(s)

```
GCTCGTTTAGTGAACCGTCAGAATTTTGTAAACGACTCACTATAGGGCGGCCGGGAATTCGTGACTG
GATCCGGTACCGAGGAGATCTGCCGCCCGCATCGCC
ATGGCAGGACTTCTGGCTCCTCCTTATGGTGTATGGAAACGGGCTCTAACAAATGACAGGATTCCTGAC
AAGGAGAACACACCTCTCATTGAACCTCACGTTCCCTCTTCGTCTGCTAACACCATTACCAAGTCCCT
TCAGAGAAGATCCTCAGAGCTGGAAAAATTTACGAAATGCCATTCTCTCGAGCACCTCACATGATA
AGAGATAGAAAAATACCACCTAAAGACATACAGACAATGCTGTGTGGAACTGAACTGGTGGACTGGATG
ATGCAGCAGACACCATGTGTTCACTCCCGGACTCAAGCTGTTGGCATGTGGCAAGTCTGTTAGAAGAT
GGTGTCTCAACCACGTGGACCAGGAGCACCATTCCAAGACAAAATTTATTCTATCGATTTCTGGAT
GATGAGCAGGAGATGCCCTTTGCCTACTGAGGAGGAGAAGAAGGAGTGTGATGAGGAGCTCCAGGAC
ACCATGCTGCTGTGCACAGATGGGCCCGACGCCACATGAGGATGATCCTTCGCAAACACCTGGC
CAGAGGACTGTGGATGACCTAGAGATTATCTATGAGGAGCTTCTCATATTAAGCCTTATCCCATCTT
TCTACCACAGTGAACGAGAGTTAGCAGGTGTTCTCATTTTTGAGTCTCACGCCAAAGGAGGGACTGTG
TTGTTTAAACAGGGGGAAGAAGGTACCTCCTGGTACATTATTCTAAAAGGATCAGTGAATGTAGTCAAT
TACGGCAAGGGTGTGGTCTGCACCCTGCATGAAGGAGATGACTTCGGCAAGTTAGCACTAGTGAATGAT
GCCCCACGAGCTGCCTCTATCGTCTTACGAGAAGATAACTGCCATTTCTTAAGAGTAGACAAGGAGGAT
TTCAACCCGATCCTAAGGGACGTGGAGGCGAATACAGTCAGACTTAAAGAACATGACCAAGATGTCTTG
GTGCTGGAGAAGTCCCAGCAGGGAACAGAGCTTCTAATCAAGGAAACTCACAGCCTCAGCAAAAGTAT
ACTGTGATGTCAGGAACCTGAAAAATTTAGAGCATTTTCTAGAAACAATACGCCTTGAGGCAACT
TTAAATGAAGCAACAGATTCTGTTTTAAATGACTTTATATGATGCACTGTGTTTTATGCCAAATACC
CAGCTTTGCCCGCACTGGTGGCCACTACCACGCACAGCCTTCAAGGTACAGAACAGGAGAAAATG
GATTATGCCCTCAACAATAAGAGCGAGTCATCCGCCTGGTTCTACAGTGGCTGCCATGTATGGAGAC
CTCCTGCAAGAGGATGACGTGTCTATGGCCTCCTGGAGGAGTTTTATGTATCTGTATCAGATGATGCC
CGGATGATTGCTGCCCTCAAGGAGCAACTGCCAGAGTTGGAGAAGATTGTCAAGCAAATCTCAGAAGAT
GCAAAGGCACCACAAAAGAAGCACAAGTTCTTTTGAACAGTTCAATACGGGCGATGAGAGAGCCAG
AAGCGCCAGCCTATCCGCGGCTCTGATGAAGTTCTGTTAAGGTCTATTGCATGGACCACACCTACACA
ACCATTCCGGTGCCAGTGGCCACTTCGGTGAAGGAAGTCATCAGTGCAGTTGCCACAAGCTGGGCTCC
GGGAGGGCCTGATCATAGTCAAGATGAGTTCGGGAGGAGAAAAGGTGGTCTCAAACCTAATGATGTT
TCAGTATTACGACGCTCACCATTAATGGACGCCTGTTTGCTTGCCCGGAGAGCAATTCGATTCAGT
ACTCCCTTACCAGAACAGGAAGGCCAACTGTTGGAACAGTGGGAACTTTTGAAGTATGAGCTCCAAA
GATTTAGCATACCAGATGACAATTTATGATTGGGAACTTTCAACTGCGTGCATGAGCTGGAGCTAATC
TATCACACATTTGGAAGGCATAATTTAAAAAGACCACAGCAAATTTGGATTTGTTCTGAGGAGATTT
AATGAAATTCAGTTTTGGGTCGTCAGTCTGAGATCTGCCTTTGTTCTCAGCTCAGCAAGCGTGTTCAGCTA
TTAAAAAATTTATTAAGATAGCAGCCACTGTAAGGAGTATAAAAAATCTGAATTCCTTTTTTGGCATC
GTCATGGGACTAAGTAACGTTGCTGTGAGCCGCTTGGCACTAACGTGGGAGAACTGCCAAGCAAGTTC
AGAAGTCTATGCGGAGTTTGAAGTTAATGGACCCCTCAAGGAACCAAGGGCTACAGGCTGACA
GTAGCTAAGCTGGAACCTCCTCTCATCCCTTCATGCCTTTGCTCATTAAAGATATGACATTTACTCAT
GAGGGGAACAAGACGTTTATTGACAATCTAGTAACTTTGAAAAAATGCGCATGATTGCAAAATACGGCC
AGAACAGTGAGATACTACAGGAGCAACCTTCAATCCTGATGCAGCTCAAGCTAATAAGAACCATCAG
GATGTCCGGAGTTATGTACGGCAATTAATGTGATTGACAACCAGAGAAGTTTATCACAGATGTCACAC
AGATTAGAGCCTCGTCGACCA
ACGCGTACGCGGCCGCTCGAG - GFP Tag - GTTTAAAC
```

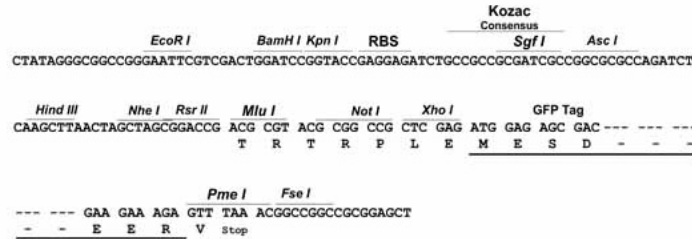
**Protein Sequence:** >Peptide sequence encoded by RG239694  
 Blue=ORF Red=Cloning site Green=Tag(s)

MAGLLAPPYGVMETGSNNDRIPDKENTPLIEPHVPLRPANTITKVPSEKILRAGKILRNAILSRAPHMI  
 RDRKYHLKTYRQCCVGTTELVDWMMQQTPCVHSRTQAVGMWQVLLLEDGVLNHVDQEHHFQDKYLFYRFLD  
 DEHEDAPLPTEEEKKECDEELQDTMLLLSQMGPDAMRMILRKPPGQRTVDDLEIIYEELLHIKALSHL  
 STTVKRELAVLIFESHAKGGTVLFNQGEEGTSWYIILKGSVNVVIYKGVVCTLHEGDDFGKLALVND  
 APRAASIVLREDNCHFLRVKEDFNRIIRDVEANTVRLKEHDQDVLVLEKVPAGNRASNQNSQPQKY  
 TVMSGTPEKILEHFLETIRLEATLNEATDSVLNDFIMMHCVFMPNTQLCPALVAHYHAQPSQGTEQEKM  
 DYALNNKRRVIRLVLQWAAMYGDLLQEDDVSMAFLEEFYVSVDARMIAALKEQLPELEKIVKQISED  
 AKAPQKKHKVLLQQFNTGDERAQKRQPIRGSDVLFKVCMDHTYTTIRVPVATSVKEVISAVADKLG  
 GEGLIIVKMSSGGEKVVLPNDVSFVTTLTINGRLFACPREQFDSLTPLEQEGPTVGTGTFELMSSK  
 DLAYQMTIYDWELFNCVHELELYHTFGRHNFKTTANLDLFLRRFNEIQFVWVTEICLCSQLSKRVQL  
 LKKFKIAAHCKEYKNLNSFFAIVMGLSNVAVSRLALTWEKLPKFKFYAEFESLMDPSRNRHAYRLT  
 VAKLEPPLIPFMPLLIKDMFTTHEGNKTFIDNLVNF EKMRMIANTARTVRYRSPFPNDAAQANKNHQ  
 DVRSYVRQLNVIDNQRTLQMSHREPRRP  
 TRTRPLEMESDESGLPAMEIECRITGTLNGVEFELVGGGEGTPEQGRMTNKMSTKGALTFSPYLLSHV  
 MGYGFYHFGTYPSTYENPFLHAINNGGYNTRIEKYEDGGVLHVSFSYRYEAGRVIGDFKVMGTGFPEP  
 SVIFTDKIIIRS NATVEHLHPMGDNDLDGSFTRTFSLRDGGYSSVVD SHMHFSAIHPSILQNGGPMFA  
 FRRVEEDHSNTELGIVEYQHAFKTPDADAGEERV

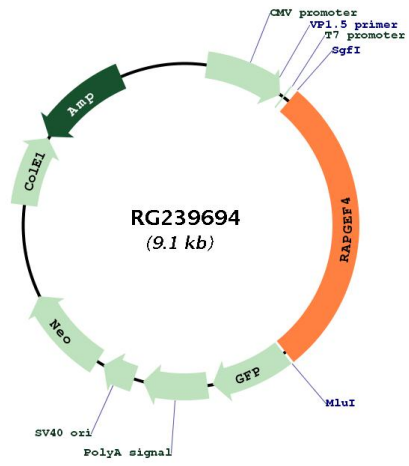
**Restriction Sites:** Sgfl-Mlul

Cloning Scheme:

Cloning sites used for ORF Shutting:



Plasmid Map:



ACCN: NM\_001282899

<b>ORF Size:</b>	2574 bp
<b>OTI Disclaimer:</b>	The molecular sequence of this clone aligns with the gene accession number as a point of reference only. However, individual transcript sequences of the same gene can differ through naturally occurring variations (e.g. polymorphisms), each with its own valid existence. This clone is substantially in agreement with the reference, but a complete review of all prevailing variants is recommended prior to use. <a href="#">More info</a>
<b>OTI Annotation:</b>	This clone was engineered to express the complete ORF with an expression tag. Expression varies depending on the nature of the gene.
<b>Components:</b>	The ORF clone is ion-exchange column purified and shipped in a 2D barcoded Matrix tube containing 10ug of transfection-ready, dried plasmid DNA (reconstitute with 100 ul of water).
<b>RefSeq:</b>	<a href="#">NM_001282899.2</a>
<b>RefSeq Size:</b>	3991 bp
<b>RefSeq ORF:</b>	2577 bp
<b>Locus ID:</b>	11069
<b>UniProt ID:</b>	<a href="#">Q8WZA2</a>
<b>Cytogenetics:</b>	2q31.1
<b>Protein Pathways:</b>	Leukocyte transendothelial migration
<b>MW:</b>	98.7 kDa
<b>Gene Summary:</b>	Guanine nucleotide exchange factor (GEF) for RAP1A, RAP1B and RAP2A small GTPases that is activated by binding cAMP. Seems not to activate RAB3A. Involved in cAMP-dependent, PKA-independent exocytosis through interaction with RIMS2 (By similarity).[UniProtKB/Swiss-Prot Function]