

## Product datasheet for **RG239672**

### **SORBS1 (NM\_001290298) Human Tagged ORF Clone**

#### **Product data:**

|                           |  |
|---------------------------|--|
| Product Type:             | Expression Plasmids                          |
| Product Name:             | SORBS1 (NM_001290298) Human Tagged ORF Clone |
| Tag:                      | TurboGFP                                     |
| Symbol:                   | SORBS1                                       |
| Synonyms:                 | CAP; FLAF2; R85FL; SH3D5; SH3P12; SORB1      |
| Mammalian Cell Selection: | Neomycin                                     |
| Vector:                   | pCMV6-AC-GFP (PS100010)                      |
| E. coli Selection:        | Ampicillin (100 ug/mL)                       |



[View online »](#)

**ORF Nucleotide Sequence:**

>RG239672 representing NM\_001290298.  
 Blue=ORF Red=Cloning site Green=Tag(s)

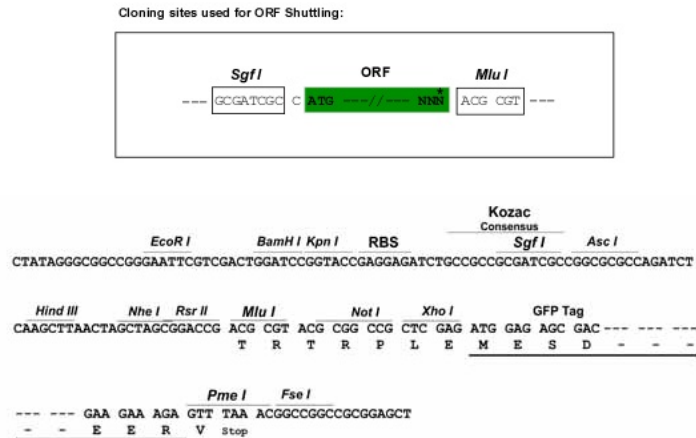
```
GCTCGTTTAGTGAACCGTCAGAATTTTGTAAACGACTCACTATAGGGCGGCCGGGAATTCGTGACTG
GATCCGGTACCGAGGAGATCTGCCGCCGCGATCGCC
ATGAGTTCTGAATGTGATGGTGGTTCCAAAGCTGTGATGAATGGCTTGGCACCTGGCAGCAATGGGCAA
GACAAAGCAACTGCCGACCTTTACGCGCAGCTCTATTTCTGCTGTTAAAAATCATTCTGTGAAGACA
GTGAAAAACGCCCTCAGGCCTAGTTCTCCCTACAGACATGGATCCTACAAAAATCTGCACTGGGAAGGGA
GCGGTGACTCTCCGGGCCTCGTCTTCTACAGGAAACCCCAAGCAGTAGCCCTGCGAGCCCTCAGGAA
ACCCGGCAACACGAAAGCAAACCAGATGAGTGGAGGCTTTCTTCCAGTGCTGATGCCAATGGAAATGCC
CAGCCCTCTTCACTCGTGCCAAGGGCTACAGAAGTGTGCATCCCAACCTTCTTCTGACAAGTCCCAG
GATTCCAGTCTCTACTAAATGAAGTTTCTTCTCCCTTATTGGAAGTATTCCCAAGCCTTTCCATCA
GTTAGCAAGCCTTCATCCGCCTATCCCTCCACAACGATTGTCAATCTACTATTGTGCTCTTGAACAC
AATCGAGAACAGCAAAAACGACTCAGTAGCCTTTCAGATCCTGTCTCAGAAAAGAAGAGTGGGAGAGCAG
GACTCAGCACCAACCCAGGAAAAACCCACCTCACCTGGCAAGGCTATTGAAAAAGAGCAAAGGATGAC
AGTAGGCGGGTGGTGAAGAGCACTCAGGACTTAAGCGATGTTTCCATGGATGAAGTGGGCATCCCACTC
CGGAACACTGAGAGATCAAAAGACTGGTACAAGACTATGTTTAAACAGATCCACAAAAGTGAACAGAGAC
ACTCCTGAAGAAAACCTTATTTCCCTACGTACAAATTCCTGAACTTCTGAAATCCAGCAAACCTTCC
GAAGAGGACAAATCCTTACACTCCACCTACCAGTTTCTGCATCTACTCTAGTCCTAAATCTGAAGAT
GATGATTCAGATCTGACTCTCCAGATACTCATTTTCTGAAGACACAAAATCTCCCTTTCTGTGCCT
CGCTCAAAAAGTGAGATGAGCTACATTGATGGTGAAGGTAGTCAAGAGGTGGCCACACTACCCCTC
CCAGCCCGCTCTTCTCACTGAAGTCAAGCTCAGAAAAGAAATGACTGGGAACCCCAAGATGAAAGTGA
GACACAAGAAAATATCGTGCAGAGCCCAAGAGCATTTACGAATATCAGCCTGGCAAGTCTCCGTTCTG
ACCAACGAAAAGATGAGTCGGGATATAAGCCCAAGAGATAGATTTAAAGAATGAACCTTGGTATAAA
TTCTTTTCGGAATTGGAGTTTGGGAAACCGAGCTCAGCCATCAGCCCTACTCCGGAATTTCTTCAGAG
ACTCCTGGATATATATTTCTTCCAACCTCCATGCAGTGAAGAGGGAATCAGACGGGGCTCCTGGGGAT
CTCACTAGCTTGGAGAATGAGAGACAAATTTATAAAAAGTGTCTTGGAAAGGTGGTACATCCCTCTCAG
GGCCTGAGTGGGCTCAAGCGACCATCCAGCTCTGCTTCCACTAAAGATTCAGAATCGCCAAGACATTTT
ATACCAGCTGATTACTTGAATCCACGGAAGAATTTATTCGAAGACGTCATGATGATAAAGAGAACTT
TTAGCGGACCAGAGACGACTTAAACGCGAGCAAGAAGAGGCTGATATTGCAGCTCGACGCCACACAGGC
GTCATTCGACGACCATCAGTTTATCACTAATGAGCGCTTTGGGACCTCCTCAATATAGACGATACT
GCAAAAAGGAAATCTGGGTCAGAGATGAGACCTGCCAGAGCCAAATTTGACTTTAAAGCTCAGACACTA
AAGGAGCTTCTCTGCAGAAGGGAGATATTGTTTACATTTATAAGCAAATGATCAGAATGGTATGAA
GGAGAACACCACGGCCGGGTGGGAATCTTCCCACGCACCTACATCGAGCTTCTTCTCTGCTGAGAAG
GCACAGCCCAAAAAGTTGACACCAAGTGCAGGTTTTGGAATATGGAGAAGCTATTGCTAAGTTAACTTT
AATGGTGATACACAAGTAGAAATGTCCTTCAGAAAAGGTTGAGAGGATCACACTGCTCCGGCAGGTAGAT
GAGAATGGTACGAAGGGAGGATCCCGGGGACATCCCGACAAGGCATCTTCCCATCACCTACGTGGAT
GTGATCAAGCGACCACTGGTAAAAACCTGTGGATTACATGGACCTGCCTTTCTCTCTCCCAAGT
CGCAGTGCCACTGCAAGCCACAGCAACCTCAAGCCAGCAGCGAAGAGTCAACCCCGACAGGAGTCAA
ACCTCACAAGATTTATTTAGCTATCAAGCATTATATAGCTATATACCACAGAATGATGATGAGTTGGAA
CTCCGCGATGGAGATATCGTTGATGTCATGAAAAATGTGACGATGGATGGTTTGTGGTACTTCAAGA
AGGACAAAGCAGTTTGGTACTTTTCCAGGCAACTATGAAAAACCTTTGTATCTA
ACGCGTACGCGGCCGCTCGAG - GFP Tag - GTTTAAAC
```

**Protein Sequence:** >Peptide sequence encoded by RG239672  
Blue=ORF Red=Cloning site Green=Tag(s)

MSSECDGGSKAVMNGLAPGSNGQDKATADPLRARSISAVKIIPVKTVKNASGLVLPTDMDPTKICTGKG  
AVTLRASSYRETPSSSPASPQETRQHEKDPDEWRLSSADANGNAQPSSLAAGYRSVHPNLP SDKSQ  
DSSPLLNEVSSSLIGTDSQAFPSVSKPSSAYPSTTIVNPTIVLLQHNREQKRLSSLDPVSERRVGEQ  
DSAPTQEKPTSPGKAIEKRAKDDSRVVKSTQDLSDVSMDEVGIPLRNTERSKDWYKTMFKQIHKLN RD  
TPEENPYFPTYKPELPEIQQTSEEDNPYTPYQFPASTPSKSEDDSDLYSPRYSFSEDTKSPLSVP  
RSKSEMSYIDGEKVVKRSATLPLPARSSSLKSSSERNDWEPDKKVDTRKYRAEPKSIYEYQPGKSSVL  
TNEKMSRDISPEEIDLKNEPWYKFFSELEFGKPSSAISPTPEISSETPGYIYSSNFHAVKRES DGAPGD  
LTSLENERQIYKSVLEGGDIPLQLSGLKRPSSASTKDSESPRHFIPADYLESTEEFIRRRHDDKEKL  
LADQRRLKREQEEADIAARRHTGVIPTHHQFITNERFGDLLNIDDTAKRKGSEMRPARAKFDKAQTL  
KELPLQKGDIVYIYKQIDQNWYEGEHHGRVGFPRTYIELLPPAEKAQPKKLTVPVQVLEYGEAIKFN F  
NGDTQVEMSF RKGERITLLRQVDENWYEGRIPGTSRQGIFPITYVDVIKRPLVKNPVDYMDLPFSSSPS  
RSATASPQQPQAQRRVTPDRSQTSQLFSYQALYSYIPQNDDELELRDGDIVDVMEKCDDGWFVGTSR  
RTKQFGTFPGNYVKPLYL

TRTRPLEMESDESGLPAMEIECRITGTLNGVEFELVGGGEGTPEQGRMTNKMSTKGALTFSPYLLSHV  
MGYGFYHFGTYPSTYSGYENPFLHAINNGGYNTRIEKYEDGGVLHVSFSYRYEAGRVIGDFKVMGTGFPE D  
SVIFTDKIIRSNATVEHLHPMGDNDLDGSFTRTFSLRDGGYSSVVDSHMHFKSAIHPSILQNGGPMFA  
FRRVEEDHSNTELGIVEYQHAFKTPDADAGEERV

**Restriction Sites:** Sgfl-Mlul

**Cloning Scheme:**


**ACCN:** NM\_001290298

**ORF Size:** 2538 bp

**OTI Disclaimer:** The molecular sequence of this clone aligns with the gene accession number as a point of reference only. However, individual transcript sequences of the same gene can differ through naturally occurring variations (e.g. polymorphisms), each with its own valid existence. This clone is substantially in agreement with the reference, but a complete review of all prevailing variants is recommended prior to use. [More info](#)

**OTI Annotation:** This clone was engineered to express the complete ORF with an expression tag. Expression varies depending on the nature of the gene.

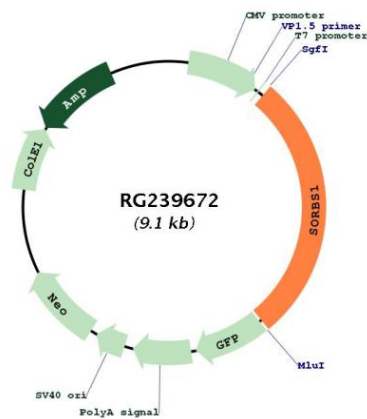
**Components:** The ORF clone is ion-exchange column purified and shipped in a 2D barcoded Matrix tube containing 10ug of transfection-ready, dried plasmid DNA (reconstitute with 100 ul of water).

**RefSeq:** [NM\\_001290298.1](#), [NP\\_001277227.1](#)

**RefSeq Size:** 5888 bp

|                   |   |
|-------------------|---|
| RefSeq ORF:       | 2541 bp   |
| Locus ID:         | 10580   |
| UniProt ID:       | <a href="#">Q9BX66</a>  |
| Cytogenetics:     | 10q24.1   |
| Protein Families: | Druggable Genome  |
| Protein Pathways: | Adherens junction, Insulin signaling pathway, PPAR signaling pathway  |
| MW:               | 95.5 kDa  |
| Gene Summary:     | This gene encodes a CBL-associated protein which functions in the signaling and stimulation of insulin. Mutations in this gene may be associated with human disorders of insulin resistance. Alternative splicing results in multiple transcript variants. [provided by RefSeq, Mar 2014] |

### Product images:



Circular map for RG239672