

Product datasheet for **RG239658**

DORFIN (RNF19A) (NM_001280539) Human Tagged ORF Clone

Product data:

Product Type:	Expression Plasmids
Product Name:	DORFIN (RNF19A) (NM_001280539) Human Tagged ORF Clone
Tag:	TurboGFP
Symbol:	DORFIN
Synonyms:	RNF19
Mammalian Cell Selection:	Neomycin
Vector:	pCMV6-AC-GFP (PS100010)
E. coli Selection:	Ampicillin (100 ug/mL)



[View online »](#)

ORF Nucleotide Sequence:

>RG239658 representing NM_001280539.
 Blue=ORF Red=Cloning site Green=Tag(s)

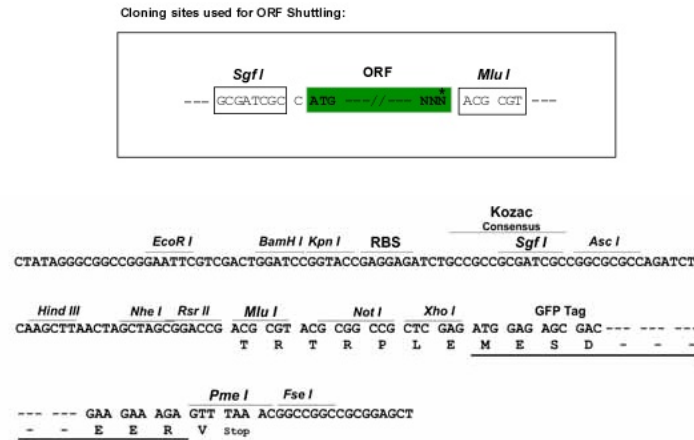
```
GCTCGTTTAGTGAACCGTCAGAATTTTGTAAATACGACTCACTATAGGGCGGCCGGGAATTCGTGACTG
GATCCGGTACCGAGGAGATCTGCCGCCCGGATCGCC
ATGCAAGAACAAGAAATAGGTTTTATCTCTAAATATAATGAAGGGCTGTGTGTAACACTGACCCTGTC
TCAATTTACAAGCATTTTAGACATGAGTTTACATCGGCAAATGGGTTCCAGATCGAGATCTTCAGTCC
TCTGCTTCATCTGTGAGCTTGCCTTCAGTCAAAAAGGCACCCAAAAAAGAAGAAATTTCAATAGGCTCC
CTGTTTCGGAGGAAAAAGATAACAAACGTAAATCAAGGGAGCTAAATGGCGGGTGGATGGAATTGCA
AGTATTGAAAGTATACATTCTGAAATGTGACTGATAAGAATCCATTTTCTCTACAAATACCTCTTCT
GACAATGGATTAACCTCCATCAGCAACAAATTGGAGACTTCATAGAGTGCCCTTTGTGCCTTTTGGCG
CATTCTAAAGACAGATTTCTGATATAATGACTTGTGCATCACAGATCTTGTGGATTGCTTACGACAA
TATTTAAGGATAGAAATCTCTGAAAGCAGAGTTAATATTAGTTGCCAGAATGACTGAACGGTTTAAAT
CCCCATGATATTCGCTTGATATTAAGTGATGATGCTTGTGAAAAATACGAAGATTTATGCTTAGA
CGGTGGCTTGTTCAGATCCTGATTGTAGGTGGTCCAGCTCCAGACTGTGGATATGCTGTGATAGCA
TTTGGATGTGCCAGCTGTCCAAAATTAACCTTGTGGCGAGAGGGCTGTGGAACAGAGTTTGTCTACCAC
TGTAACAGATTTGGCACCCCAACCAGACCTGTGATGCTGCTCGACAAGAGAGAGCCAGAGCTTACGT
TTGAGAACTATACGTTCTTCATCCATTAGTTATAGTCAAGAGTCTGGAGCAGCAGCTGATGATATAAAG
CCATGTCCACGATGTGCTGCTTATAATAAAGATGAATGATGGGAGCTGCAATCACATGACATGTGCT
GTTTGTGGTTGTGAGTTTTGTGGTTGTGTATGAAAGAAATCTCAGATTTGCATTATCTAAGTCCATCA
GGATGACTTTTTGGGGGAAGAAACCTGGAGCCGAAAGAAGAAATATTGTGGCAACTGGGAACACTG
GTTGGTCTCCTGTCCGAATCGCTTAAATAGCTGGCATTGCTATTCCTGCAATGATTATTGGCATTCTT
GTGTATGTGGCCGCAAGATTCACAATCGCTATGAAGGCAAGGATGTTTCAAAGCACAAACGGAAATTTG
GCCATAGCAGGTGGTGAACGTTGTCTGTAACTGTCTCCAGTAGTAGCTGCAGTGACTGTAGGTATC
GGTGTTCCTATTATGTTAGCTTATGTCTATGGCGTAGTCCAATTTCTTTTGTGCAAGCGGAGGTTGT
GGAGTCTCAGCAGGCAATGAAAAAGGAGTTAGGATTGAATTTGATGATGAAAATGATATAAATGTTGGT
GGAACCTAACACAGCTGTAGACACAACATCAGTAGCAGAAGCAAGACACAACCCAAGCATAGGGGAGGGA
AGTGTGGTGGGCTGACTGGCAGTTTGTGAGTCAAGTGAAGCCACATGGATCGAATAGGAGCCATCCGA
GACAACCTGAGTGAACCGCCAGCACCATGGCACTAGCTGGAGCCAGTAAACGGGGAGTCTGTCAGGA
AGTGCCATGGTAAACTGTTTTAACAGGTTGGAAGTACAAGCAGATGTACAGAAAGAACGGTACAGTCTA
AGTGGAGAATCTGGCACAGTCCAGTTGGGAACAGTTAGTGATAATGCCAGCACCAAGCAATGGCAGGA
TCCATTCTGAATTCCTACATCCCATTGGACAAAGAAGGCAACAGTATGGAGGTGCAAGTAGATATTGAG
TCAAAGCCATCCAAATTCAGGCACAACAGTGAAGCAGTGTGTTGGATGATGGCAGTGCCACCCGAAGT
CATGCTGGCGGTTTCATCCAGTGGCTTGCCTGAAGGTAATCTAGTGCCACCAAGTGGTCCAAAGAAGCA
ACAGCAGGGAAAAATCAAAAAGTGGTAAACTGAGGAAAAAGGTAACATGAAGATAAATGAGACGAGA
GAGGACATGGATGCACAGTTGTTAGAACAACAAAGCACGAACTCAAGTGAATTTGAGGCTCCATCCCTC
AGTGACAGTATGCCTTCTGTAGCAGATTCTCACTCTAGTCATTTTCTGAATTTAGTTGTTCTGACCTA
GAAAGCATGAAAATCTTGTAGTCATGTTCCAGTGATTATCACACCCGCTTTGCTACTGTTAACATT
CTTCTGAGGTAGAAAAAGACCGTCTGGAAAATCCCCACATCAGTGTAGCATTCTGTGGTTACCCAA
ACTGCTTCTGTTCAGAAGTTTACAGTTGAATCATATTGCTGAAGAACATGGTAACAATGGAATAAAA
CCTAATGTTGATTTATTTTTGGCGATGCACTAAAAGAAACAAATAACAACCACTCACATCAGACAATG
GAATTAAGTTGCAATTCAGACTGAAATT
ACGCGTACGCGGCCGCTCGAG - GFP Tag - GTTTAAAC
```

Protein Sequence: >Peptide sequence encoded by RG239658
 Blue=ORF Red=Cloning site Green=Tag(s)

```

MQEQEIGFISKYNEGLCVNTDPVSIILTSILDMSLHRQMGSDRDLQSSASSVSLPSVKKAPKKRRISIGS
LFRRKKDNKRKSRELNGGVDGIASIESIHSEMCTDKNSIFSTNTSSDNLTSISKQIGDFIECPLCLLR
HSKDRFPDIMITCHHRSCVDCLRQYLRIEISESRVNI SCPECTERFNPHDIRLILSDDVLMKEYEFLMR
RWLVADPDCRWCPAPDCGYAVIAFGCASC PKLTCGREGCGTEFCYHCKQIWHPNQTCDAARQERAQSLR
LRTIRSSSISYSQESGAAADDIKPCPRCAAYIIKMNDGSCNHMTCAVCGCEFCWLCMKEISDLHYLSPS
GCTFWGKPPWSRKKKILWQLGTLVGAPVGIAGIAIPAMIIGIPVYVGRKIHNRVEGKDVSKHKRNL
AIAGGVTL SVIVSPVAAVTVGIGVPIMLAYVYGVVPI SLCRSGGCGVSAGNGKGVRIEFDDENDINVG
GTNTAVDTTSVAEARHNPSIGEGSVGGLTGSL SASGSHMDRIGAIRDNLSETASTMALAGASITGSLSG
SAMVNCFNRLVQADVQKERYSLSGESGTVSLGTVSDNASTKAMAGSILNSYIPLDKEGNSMEVQVDIE
SKPSKFRHNSGSSVDDGSATRSHAGGSSSGLPEGKSSATKWSKEATAGKKSKSGKLRKKGNMKINETR
EDMDAQLLEQQSTNSSEFEAPSLSDSMP SVADSHSHFSEFSCSDLESMKTSCSHGSSDYHTRFATVNI
LPEVENDRLENSPHQCSISVVTQTASCSEVSQLNHIAEEHGNGIKPNVDLYFGDALKETNNHSHQTM
ELKVAIQTEI
TRTRPLEME SDESGLPAMEIECRITGTLNGVEFELVGGGEGTPEQGRMTNKMKSTKGALTFSPYLLSHV
MGYGFYHFGTYP SGYENPFLHAINNGGYTNTRIEKYEDGGVLHVFSYRYEAGRVIGDFKVMGTGFPEP
SVIFTDKIIRSNATVEHLHPMGDNDLDGSFTRTFSLRDGGYSSVVDSHMHFKSAIHPSILQNGGPMFA
FRRVEEDHSNTELGIVEYQHAFKTPDADAGEERV
  
```

Restriction Sites: Sgfl-Mlul

Cloning Scheme:


ACCN: NM_001280539

ORF Size: 2514 bp

OTI Disclaimer: The molecular sequence of this clone aligns with the gene accession number as a point of reference only. However, individual transcript sequences of the same gene can differ through naturally occurring variations (e.g. polymorphisms), each with its own valid existence. This clone is substantially in agreement with the reference, but a complete review of all prevailing variants is recommended prior to use. [More info](#)

OTI Annotation: This clone was engineered to express the complete ORF with an expression tag. Expression varies depending on the nature of the gene.

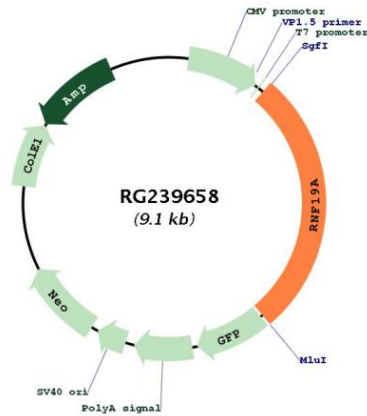
Components: The ORF clone is ion-exchange column purified and shipped in a 2D barcoded Matrix tube containing 10ug of transfection-ready, dried plasmid DNA (reconstitute with 100 ul of water).

RefSeq: [NM_001280539.2](#)

RefSeq Size: 4318 bp

RefSeq ORF:	2517 bp
Locus ID:	25897
UniProt ID:	Q9NV58
Cytogenetics:	8q22.2
Protein Families:	Druggable Genome, Transcription Factors, Transmembrane
MW:	90.7 kDa
Gene Summary:	This gene encodes a member of the ring between ring fingers (RBR) protein family, and the encoded protein contains two RING-finger motifs and an in between RING fingers motif. This protein is an E3 ubiquitin ligase that is localized to Lewy bodies, and ubiquitylates synphilin-1, which is an interacting protein of alpha synuclein in neurons. The encoded protein may be involved in amyotrophic lateral sclerosis and Parkinson's disease. Alternative splicing results in multiple transcript variants. [provided by RefSeq, Jul 2013]

Product images:



Circular map for RG239658