

## Product datasheet for **RG239651**

### LGR5 (NM\_001277227) Human Tagged ORF Clone

#### Product data:

Product Type:	Expression Plasmids
Product Name:	LGR5 (NM_001277227) Human Tagged ORF Clone
Tag:	TurboGFP
Symbol:	LGR5
Synonyms:	FEX; GPR49; GPR67; GRP49; HG38
Mammalian Cell Selection:	Neomycin
Vector:	pCMV6-AC-GFP (PS100010)
E. coli Selection:	Ampicillin (100 ug/mL)



[View online »](#)

**ORF Nucleotide Sequence:**

>RG239651 representing NM\_001277227.  
 Blue=ORF Red=Cloning site Green=Tag(s)

```

GCTCGTTTAGTGAACCGTCAGAATTTTGTAAACGACTCACTATAGGGCGGCCGGGAATTCGTGACTG
GATCCGGTACCGAGGAGATCTGCCGCCCGCATCGCC
ATGGACACCTCCCGGCTCGGTGTGCTCCTTGCTGCTGCTGCAGCTGGCGACCGGGGGCAGC
TCTCCAGGTCTGGTGTGTTGCTGAGGGGCTGCCACACACTGTCATTGCGAGCCCGACGGCAGGATG
TTGCTCAGGGTGGACTGCTCCGACCTGGGGCTCTCGGAGCTGCCTTCCAACCTCAGCGTCTCACCTCC
TACCTAGACCTCAGTATGAACAACATCAGTCAGCTGCTCCCGAATCCCCTGCCAGTCTCCGCTTCTG
GAGGAGTTACGTCTTGCGGGAAACGCTCTGACATACATCCCAAGGGAGCATTCACTGGCCTTTACAGT
CTTAAAGTTCTTATGCTGCAGAATAATCAGCTAAGACACGTACCCACAGAAGCTCTGCAGAATTTGCGA
AGCCTTCAATCCCTACATCTCCATAACAATAGAATCCACTCCCTGGGAAAGAAATGCTTTGATGGGCTC
CACAGCCTAGAGACTTTAGATTTAAATTACAATAACCTTGATGAATCCCCACTGCAATTAGGACTCTC
TCCAACCTTAAAGAACTAGGATTTATAGCAACAATATCAGGTCGATACCTGAGAAAGCATTGTAGGC
AACCTTCTCTTATTACAATACATTTCTATGACAATCCCATCCAGTTTGTGGGAGATCTGCTTTTCAA
CATTTACCTGAACCTAAGAACTGACTCTGAATGGTGCCTCACAATAACTGAATTTCTGATTTAACT
GGAAGTCAAACCTGGAGAGTCTGACTTTAACTGGAGCACAGATCTCATCTCTTCTCAAACCGTCTGC
AATCAGTTACCTAATCTCCAAGTCTAGATCTGTCTTACAACCTATTAGAAGATTTACCCAGTTTTTCA
GTCTGCCAAAAGCTTCAGAAAATGACCTAAGACATAATGAAATCTACGAAATTAAGGTTGACACTTTC
CAGCAGTTGCTTAGCCTCCGATCGCTGAATTTGGCTTGGAAACAAAATGCTATTATTCACCCCAATGCA
TTTTCCACTTTGCCATCCCTAATAAAGCTGGACCTATCGTCCAACCTCCTGTCGCTTTTCTATAACT
GGGTTACATGGTTAACTCACTTAAAATTAACAGGAAATCATGCCTTACAGAGCTTGATATCATCTGAA
AACTTTCCAGAACTCAAGTTATAGAAATGCCTTATGCTTACCAGTGTGCTGCTTTGGAGTGTGAG
AATGCCTATAAGATTTCTAATCAATGGAATAAAGGTGACAACAGCAGTATGGACGACCTTCATAAGAAA
GATGCTGGAATGTTTCAGGCTCAAGATGAACGTGACCTTGAAGATTTCTGCTTACTTTGAGGAAGAC
CTGAAAGCCCTTCATTCACTGAGTGTTCACCTTCCCAGGCCCTTCAAACCTGTGAACACCTGCTT
GATGGCTGGTGTACAGAATTGGAGTGTGGACCATAGCAGTTCTGGCACTTACTTGAATGCTTTGGTG
ACTTCAACAGTTTTAGATCCCTCTGTACATTTCCCCATTAACTGTTAATTGGGTCATCGCAGCA
GTGAACATGCTCACGGGAGTCTCCAGTCCGCTGCTGGCTGGTGTGGATGCGTTCCTTTTGGCAGCTTT
GCACGACATGGTGCCTGGTGGGAGAATGGGTTGGTTGCCATGTCATTGGTTTTTTGTCCATTTTGTCT
TCAGAATCATCTGTTTTCTGCTTACTCTGGCAGCCCTGGAGCGTGGGTTCTCTGTGAAATATTCTGCA
AAATTTGAAACGAAAGCTCCATTTTCTAGCCTGAAAGTAAATCATTGCTCTGTGCCCTGCTGGCCTTG
ACCATGGCCGAGTTCCCTGCTGGGTGGCAGCAAGTATGGCGCCTCCCCTCTCTGCCTGCCTTTGCCT
TTTGGGAGCCAGCACCATGGGCTACATGGTGCCTCTCATCTTGCTCAATTCCTTTGCTTCTCATG
ATGACCATTGCCTACACCAAGCTCTACTGCAATTTGGACAAGGGAGACCTGGAGAATATTGGGACTGC
TCTATGGTAAAACACATTGCCCTGTGCTTCCACCACTGCATCCTAAACTGCCTGTGGCTTTCTTG
TCCTTCTCTCTTTAATAAACCTTACATTTATCAGTCTGAAGTAATTAAGTTTATCCTTCTGGTGGTA
GTCCCCTTCTGCATGTCTCAATCCCTTCTCTACATCTTGTCAATCCTCACTTTAAGGAGGATCTG
GTGAGCTGAGAAAGCAAACCTACGCTGGACAAGATCAAAACACCCAAGCTTGATGTCAATTAACCTCT
GATGATGTCGAAAACAGTCTGTGACTCAACTCAAGCCTTGGTAACCTTTACCAGCTCCAGCATCACT
TATGACCTGCCTCCAGTTCCTGCCATCACCAGCTTATCCAGTACTGAGAGCTGCCATCTTCTCTCT
GTGGCATTGTCCATGTCTC
ACGCGTACGCGGCCGCTCGAG - GFP Tag - GTTTAAAC
  
```

**Protein Sequence:** >Peptide sequence encoded by RG239651  
Blue=ORF Red=Cloning site Green=Tag(s)

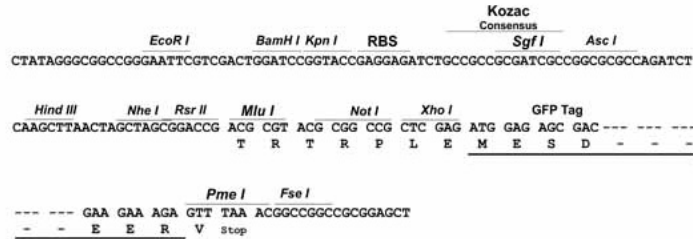
MDTSRLGVLLSLPVLQLLATGGSSPRSGVLLRGCPHCHCEPDGRMLLRVDCSDLGSELPSNLSVFTS  
YLDLSMNNISQLLPNPLPSLRFLEELRLAGNALTYIPKGAFTGLYSLKVLMLQNNQLRHPVTEALQNL  
SLQSLHLHNNRIHSLGKKCFDGLHSLLETLDLNYNNLDEFPTAIRTLNLKELGFHSNNIRSIPEKAFVG  
NPSLITIHFYDNPIQFVGRSAFQHLPELRTLTLNGASQITEFPDLTGANLESLLTGAQISSLPQTVC  
NQLPNLQVLDLSYNLLEDLPSFSVCQKLQKIDLRHNEIYEIKVDTFQQLLSLRLNLAWNKIAIIHPNA  
FSTLPSLIKLDLSSNLLSSFITGLHGLTHLKL TGNHALQSLISSENFPELKVIEMPYAYQCCAFGVCE  
NAYKISNQWNGDSSMDDLHKKDAGMFAQDERDLEDFLLDFEEDLKALHSVQCSPSPGPFKPEHLL  
DGWLIRIGVWTIAVLALTCNALVTSTVFRSPLYISPIKLLIGVIAAVNMLTGVSVAVLAVDAFTFGSF  
ARHGAWWENGVGCHVIGFLSIFASESSVFLTLAALERGFVSKYSAKFETKAPFSSLKVIILLCALLAL  
TMAAVPLLGGSKYGASPLCLPLPFGEPSTMGYVALILLNSLCFLMMTIAYTCLYCNLDKGDLENIWDC  
SMVKHIALLLFTNCILNCPVAFLSFSSLINLTFISPEVIKIFILLVVVPLPACLNPLLYILFNPHFKEDL  
VSLRKQTYVWTRSKHPSLMSINSDDVEKQSCDSTQALVTFTSSSIYDLPPSSVPSPAYPVTESCHLSS  
VAFVPCL

TRTRPLEMESDESGLPAMEIECRITGTLNGVEFELVGGGEGTPEQGRMTNKMSTKGALTFSPYLLSHV  
MGYGFYHFGTYPSTYENPFLHAINNGGYTNRIEKYEDGGVLHVSFSYRYEAGRVIGDFKVMGTGFPEP  
SVIFTDKIIIRSNATVEHLHPMGDNDLDGSFTRTFSLRDGGYSSVVDSHMFKSAIHPSILQNGGPMFA  
FRRVEEDHSNTELGIVEYQHAFKTPDADAGEERV

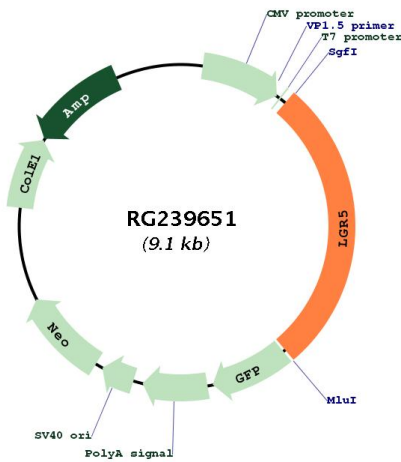
**Restriction Sites:** Sgfl-MluI

Cloning Scheme:

Cloning sites used for ORF Shutting:



Plasmid Map:



<b>ACCN:</b>	NM_001277227
<b>ORF Size:</b>	2505 bp
<b>OTI Disclaimer:</b>	The molecular sequence of this clone aligns with the gene accession number as a point of reference only. However, individual transcript sequences of the same gene can differ through naturally occurring variations (e.g. polymorphisms), each with its own valid existence. This clone is substantially in agreement with the reference, but a complete review of all prevailing variants is recommended prior to use. <a href="#">More info</a>
<b>OTI Annotation:</b>	This clone was engineered to express the complete ORF with an expression tag. Expression varies depending on the nature of the gene.
<b>Components:</b>	The ORF clone is ion-exchange column purified and shipped in a 2D barcoded Matrix tube containing 10ug of transfection-ready, dried plasmid DNA (reconstitute with 100 ul of water).
<b>RefSeq:</b>	<a href="#">NM_001277227.2</a>
<b>RefSeq Size:</b>	4409 bp
<b>RefSeq ORF:</b>	2508 bp
<b>Locus ID:</b>	8549
<b>UniProt ID:</b>	<a href="#">O75473</a>
<b>Cytogenetics:</b>	12q21.1
<b>Protein Families:</b>	Druggable Genome, GPCR, Transmembrane
<b>MW:</b>	92.5 kDa
<b>Gene Summary:</b>	The protein encoded by this gene is a leucine-rich repeat-containing receptor (LGR) and member of the G protein-coupled, 7-transmembrane receptor (GPCR) superfamily. The encoded protein is a receptor for R-spondins and is involved in the canonical Wnt signaling pathway. This protein plays a role in the formation and maintenance of adult intestinal stem cells during postembryonic development. Several transcript variants encoding different isoforms have been found for this gene. [provided by RefSeq, Sep 2015]