

Product datasheet for **RG239647**

ZNF33A (NM_001278177) Human Tagged ORF Clone

Product data:

Product Type:	Expression Plasmids
Product Name:	ZNF33A (NM_001278177) Human Tagged ORF Clone
Tag:	TurboGFP
Symbol:	ZNF33A
Synonyms:	KOX2; KOX5; KOX31; NF11A; ZNF11; ZNF11A; ZNF33; ZZAPK
Mammalian Cell Selection:	Neomycin
Vector:	pCMV6-AC-GFP (PS100010)
E. coli Selection:	Ampicillin (100 ug/mL)



[View online »](#)

ORF Nucleotide Sequence:

>RG239647 representing NM_001278177.
 Blue=ORF Red=Cloning site Green=Tag(s)

```
GCTCGTTTAGTGAACCGTCAGAATTTTGTAAACGACTCACTATAGGGCGGCCGGGAATTCGTGACTG
GATCCGGTACCGAGGAGATCTGCCGCCACGATCGCC
ATGCAACCCGACGAGGGAGTGGGCTGTATCTTCAGAGTTGTCTCCGTCTTCCAAGAACAGAACAAAAT
GAACAAGAACAGAAAGTCCCAGGAGTCAGTATCATTAAAGATGTGACTGTGGCTTCACCCAGGAGGAG
TGGCAGCACCTGGACCCTAGTCAGAGGGCTCTGTATAGAGATGTGATGCTGGAGAACTACAGCAACCTT
GTCTCAGTGGGGTATTGTGTTCCAAACCAGAGGTGATCTTCAGGCTGCAACAAGGAGAAGGCCATGG
AAACAGGAGGAAGAATTCCCAAGCCAAAGCTTTCCAGAAGTCTGGACAGCTGATCACCTGAAAGAGAGG
AGCCAAGAAAACCAATCTAAACATTTGTGGGAAGTTGATTTCATCAATAATGAAATGCTGACTAAGGAA
CAAGGTGATGTAATAGGAATACCATTTAATGTGGATGTAAGTTCTTTCCCTCCAGAAAAATGTTCTGT
CAGTGTGATTCATGTGAATGAGTTTCAACACTGTTTCAGAATTGGTTATCAGTAAGATAAACTATTTA
GGAAAAAGTCTGATGAATTTAATGCCTGTGGAAATTTACTCAATATTAAGCATGATGAACTCAT
ACTCAAGAGAAAAATGAAGTTTTGAAAAATAGGAACACACTGAGTCATCATGAGGAGACTTTGCAGCAT
GAGAAGATTCAAACCTTTAGAGCACAATTTGAATACAGTATATGTCAGGAAACCCCTCTTAAAAAGGCA
GTATTCATACACAGAAGAGAGAGAACGCAGAAGAGAATAACTGTGATTATAATGAATTTGGGAGAACT
TTGTGTGATAGTTCATCCCTCTTGTCCATCAGATATCTCCGTCAAGGGACAATCACTATGAATTTAGT
GATTGTGAGAAGTCTTATGTGTGAAGTCCACCCTTTCTAAACCTCATGGGGTATCTATGAAACACTAT
GATTGTGGTGAAGTGGGAATAATTTCCAGGAGGAAATTTGTGTCTGTCACACCTTCAGAAAGGTGATAAA
GGAGAGAAACACTTTGAATGTAATGAATGTGGGAAAGCTTTCTGGGAGAAGTCACATCTCACTCGACAT
CAGAGGGTGCACACAGGACAGAAACCTTTCAATGTAATGAATGTGAAAAAGCTTTCTGGGATAAGTCA
AACCTCACTAAACATCAAAGATCACACACAGGGGAGAAACCTTTTGAATGCAATGAATGTGGGAAAGCC
TTTAGCCATAAGTCAGCCCTCACATTACACCAGAGAACACATACAGGGGAGAAACCTTATCAATGTAAAT
CGGTGTGGGAAAACCTTTTGCCGAAAATCTGACCTCACTAAACATCAGAGAACACACACAGGGCTGAAA
CCCTATGAATGTTATGAATGTGGAAAATCCTTCCGTGTGACTTCGCACCTTAAAGTACACCAGAGAACT
CACACAGGTGAGAAACCTTTTGAATGTCTTGTGAGTGTGGGAAATCCTTTAGTAAAAAGTCAAATCTTACA
CAGCATCAGAGAATTCATAGGAGATAAATCTTATGAATGTAATGCATGTGGGAAAACCTTTCTACCAC
AAGTCATTACTCACCAGGCATCAGATAATTCATACAGGGTGGAAACCTTATGAATGTTATGAATGTGGG
AAAACCTTCTGCTTGAAGTCAGACCTCACAGTACATCAGAGAACACACACAGGGCAGAAACCTTTGCA
TGTCCCGAATGTGGGAAATCTTTAGCCATAAGTCAACCTCTCTCAACATTATAGAACACACACAGGG
GAGAAACCTACGAATGTCATGAATGTGGAAAAATCTTTTACAATAAATCATACCTAACTAAACATAAT
AGAACACATACAGGGGAGAAACCTATGAATGTAATGAATGTGGAAAAGCCTTCTACCAGAAATCAGAA
CTCACTCAGCATCAGAGAATTCATAGGGGAGAAACCTATAAATGTAATGAGTGTGGAAAAGCTTTC
TGCCATAAGTCAGCTCTAATTGTACATCAGAGAACCCATACACAAGAAAAGCCCTATAAATGTAATGAA
TGTGGAAAATCTTTCTGTGTAATAATCAGGACTTATTTCCATGAGAGAAAGCACACGGGGAGAAACCC
TATGAATGCAATGAATGTGGGAAATTTCCAGGCACAAATCATCACTCACAGTACATCACAGGGCTCAC
ACAGGAGAGAAAATCTTGTCAATGTAATGAATGTGGAAAATCTTTTACCGTAAATCGAACTTGCTCAA
CATCAGAGATCACATACAGGGGAAAAGCCCTATGAATGTAACACATGCAGGAAAACCTTTCTCAAAG
TCAAATCTCATTGTACATCAGAGAAGACATATAGGAGAAAACCTTATGAATGAAATGGATATTAGAAAT
TTCCAGCCACAAGTCAGCTCCATAATGCCTCAGAGTATTCACACTGTGGAGAAAGCCCTGATGACATC
CTGAATGTTTCAG
ACGCGTACGCGGCCGCTCGAG - GFP Tag - GTTTAAAC
```

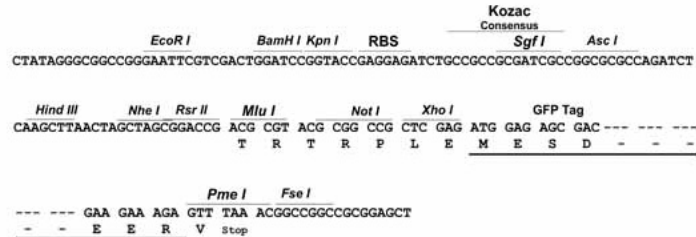
Protein Sequence: >Peptide sequence encoded by RG239647
 Blue=ORF Red=Cloning site Green=Tag(s)

MQPDEGVGCI FRVVSVPFRTEQNEQEKSQESVSFKDVTVGFTQEEWQHLDPSQRALYRDVMLENYSNL
 VSVGVCVHKPEVIFRLQQGEEPWKQEEEFPSQSFPEVWTADHLKERSQENQSKHLWEVVF INNEMLTKE
 QGDVIGIPFNVDVSSFPSRKMFCQCDSCGMSFNTVSELVISKINYLGKKSDEFNACGKLLLLNIKHDETH
 TQEKNEVLKNNRNTLSHHEETLQHEKIQTLEHNFEYSICQETLLEKAVFNTQKRENAEENNCYNEFGRT
 LCDSSLLFHQISPSRDNHYEFSDCEKFLCVKSTLSKPHGVSMKHYDCGESGNNFRRKLCLSHLQKGDK
 GEKHFECNECGKAFWEKSHLTRHQRVHTGQKPFQNECEKAFWDKSNLTKHQRSHTGEKPFECNECGKA
 FSHKSALTLHQRTHTEKPYQCACGKTFQKSDLTKHQRTHGLKPYECYECGKSFRVTSHLKVHQRTH
 HTGEKPFECLECGKSFSEKSNLTQHQRIRHIGDKSYECNACGKTFYHKSLLTRHQRTHTEKPYECYECG
 KTFCLKSDLTVHQRTHTEKPFACPECGKFFSHKSTLSQHYRTHTEKPYECHECGKIFYNKSYLTKHN
 RTHTEKPYECNECGKAFYQKSQLTQHQRIRHIGEKPYKCNECGKAFCHKSA LIVHQRTHTEKPYKCNE
 CGKSFVKSGLIFHERKHTGEKPYECNECGKFFRHKSSLTVHHRHTGEKSCQCNECGKIFYRKSELAQ
 HQRSHTGEKPYECNTRKTF SQKSNLIVHQRRIHIGENLMNEMDIRNFQPQVSLHNASEYSHCGESPDDI
 LNVQ
 TRTRPLEMESDESGLPAMEIECRITGTLNGVEFELVGGGEGTPEQGRMTNKMSTKGALTFSPYLLSHV
 MGYGFYHFGTYPYSGYENPFLHAINNGGYNTRIEKYEDGGVLHVFSYRYEAGRVIGDFKVMGTGFPEP
 SVIFTDKIIIRSNATVEHLHPMGDNDLDGSFTRTFSLRDGGYSSVVDSHMHFKA IHP SILQNGGPMFA
 FRRVEEDHSNTELGIVEYQHAFKTPDADAGEERV

Restriction Sites: Sgfl-Mlul

Cloning Scheme:

Cloning sites used for ORF Shutting:



ACCN: NM_001278177

ORF Size: 2496 bp

OTI Disclaimer: The molecular sequence of this clone aligns with the gene accession number as a point of reference only. However, individual transcript sequences of the same gene can differ through naturally occurring variations (e.g. polymorphisms), each with its own valid existence. This clone is substantially in agreement with the reference, but a complete review of all prevailing variants is recommended prior to use. [More info](#)

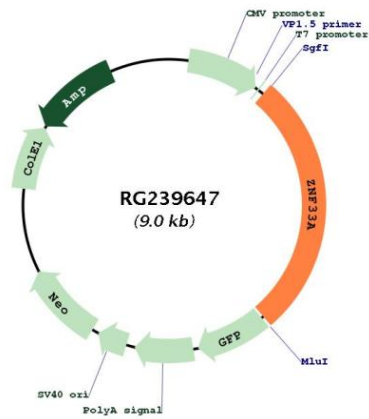
OTI Annotation: This clone was engineered to express the complete ORF with an expression tag. Expression varies depending on the nature of the gene.

Components: The ORF clone is ion-exchange column purified and shipped in a 2D barcoded Matrix tube containing 10ug of transfection-ready, dried plasmid DNA (reconstitute with 100 ul of water).

RefSeq: [NM_001278177.2](#)

RefSeq Size: 6126 bp

RefSeq ORF: 2499 bp
 Locus ID: 7581
 UniProt ID: [Q06730](#)
 Cytogenetics: 10p11.1
 Protein Families: Transcription Factors, Transmembrane
 MW: 97.3 kDa
 Gene Summary: May be involved in transcriptional regulation.[UniProtKB/Swiss-Prot Function]

Product images:


Circular map for RG239647