

## Product datasheet for **RG239642**

### **MVP (NM\_001293205) Human Tagged ORF Clone**

#### **Product data:**

Product Type:	Expression Plasmids
Product Name:	MVP (NM_001293205) Human Tagged ORF Clone
Tag:	TurboGFP
Symbol:	MVP
Synonyms:	LRP; VAULT1
Mammalian Cell Selection:	Neomycin
Vector:	pCMV6-AC-GFP (PS100010)
E. coli Selection:	Ampicillin (100 ug/mL)



[View online »](#)

**ORF Nucleotide Sequence:**

>RG239642 representing NM\_001293205.  
 Blue=ORF Red=Cloning site Green=Tag(s)

```
GCTCGTTTAGTGAACCGTCAGAATTTTGTAAACGACTCACTATAGGGCGGCCGGGAATTCGTGACTG
GATCCGGTACCGAGGAGATCTGCCGCCACGATCGCC
ATGGCAACTGAAGAGTTTCATCATCCGCATCCCCCATACCACTATATCCATGTGCTGGACCAGAACAGC
AACGTGTCCCCTGTGGAGGTGGGGCAAAGACCTACATCCGGCAGGACAATGAGAGGGTACTGTTTGCC
CCCATGCCGATGGTGACCGTCCCCCACGTCACTACTGCACAGTGGCCAACCCTGTGTCTCGGGATGCC
CAGGGCTTGGTGTGTTTGTGTACAGGGCAAGTTCGGCTTCGCCACGCTGACCTCGAGATCCGGCTG
GCCCAGGACCCCTTCCCCTGTACCCAGGGGAGGTGCTGGAAAAGGACATCACACCCTGCAGGTGGTT
CTGCCAACACTGCCCTCCATCTAAAGGCGCTGCTTGTATTTGAGGATAAAGATGGAGACAAGGTGGTG
GCAGGAGATGAGTGGCTTTTCGAGGGACCTGGCACGTACATCCCCGGAAGGAAGTGGAGGTCGTGGAG
ATCATTACAGGCCACCATCATCAGGCAGAACCAGGCTCTGCGGCTCAGGGCCCGAAGGAGTCTGGGAC
CGGGACGGCAAGGAGAGGGTGACAGGGGAAGAATGGCTGGTACCACAGTAGGGGCGTACCTCCCAGCG
GTGTTTGAAGAGGTTCTGGATTTGGTGGACGCCGTATCCTTACGAAAAGACAGCCCTGCACCTCCGG
GCTCGGGCGAAGTTCGGGACTTCAGGGGAGTGTCCCGCCGCACTGGGGAGGAGTGGCTGGTAAACAGTG
CAGGACACAGAGGCCACGTGCCAGATGTCCACGAGGAGGTGCTGGGGTGTGCCATCACACCCTG
GGCCCCACAACACTACTGCGTGATTCTCGACCCTGTCCGACCGGATGGCAAGAATCAGTGGGGCAGAAG
CGCGTGGTCAAGGGAGAGAAGTCTTTTTCTCCAGCCAGGAGAGCAGCTGGAACAAGGCATCCAGGAT
GTGTATGTGCTGTCCGAGCAGCAGGGGCTGCTGCTGAGGGCCCTGCAGCCCTGGAGGAGGGGGAGGAT
GAGGAGAAGGTCTCACACCAGGCTGGGGACCACTGGCTCATCCCGGACCCCTGGAGTATGTGCCATCT
GCCAAAGTGGAGTGGTGGAGGAGCGCCAGGCCATCCCTCTAGACGAGAACGAGGGCATCTATGTGCAG
GATGTCAAGACCGAAAGGTGCGCGCTGTGATTGGAAGCACCTACATGCTGACCCAGGACGAAGCTCTG
TGGGAGAAAGAGCTGCCTCCCGGGTGGAGGAGCTGCTGAACAAGGGGCAGGACCCCTCTGGCAGCAGG
GGTGAGAAGGACACAGCTAAGAGCCTCCAGCCCTTGGCGCCCGAACAAGACCCGTGTGGTCAAGTAC
CGCGTGCCCCACAACGCTGCGGTGCAGGTGTACGACTACCGAGAGAAGCGAGCCCGCACTTTGAGGTG
AATGACCGGAAGGACCCCAAGAGACGGCAAGCTCTTTTCAAGTCCAGACTTTGTAGGTGATGCCTGC
AAAGCCATCGCATCCCGGTGCGGGGGCCGTGGCCTCTGTCACTTTGATGACTTCCATAAGAAGTCA
GCCCGCATCATTGCACTGCTGTCTTTGGCTTTGAGACCTCGGAAGCGAAGGGCCCCGATGGCATGGCC
CTGCCAGGCCCGGGACAGGCTGTCTTCCCCAAAACGGGCTGGTGGTCAAGTGTGGACGTGCAG
TCAGTGGAGCCTGTGGATCAGAGGACCCGGGACGCCCTGCAACGCAGCGTCCAGCTGGCCATCGAGATC
ACCACCAACTCCCAGGAAGCGGGCCAAAGCATGAGGCTCAGAGACTGGAGCAGGAAGCCCGCGGCCGG
CTTGAGCGGCAGAAGATCCTGGACCAGTCAGAAGCCGAGAAGGCTCGCAAGGAACTTTGGAGCTGGAG
GCTCTGAGCATGGCCGTGGAGAGCACCGGGACTGCCAAGGCGGAGGCCGAGTCCCGTGGCGAGGCAGCC
CGGATTGAGGGAGAAGGGTCCGTGCTGCAGGCCAAGCTAAAAGCACAGGCCTTGGCCATTGAAACGGAG
GCTGAGCTCCAGAGGGTCCAGAAGGTCCGAGAGCTGGAAGTGGTCTATGCCCGGGCCAGCTGGAGCTG
GAGGTGAGCAAGGCTCAGCAGCTGGCTGAGGTGGAGGTGAAGAAGTTCAAGCAGATGACAGAGGCCATA
GGCCCCAGCACCATCAGGGACCTTGTGTGGCTGGGCTGAGATGCAGGTAAAAGTGTCCAGTCCCTG
GGCCTGAAATCAACCCTCATCACCGATGGCTCCACTCCCATCAACCTTCAACACAGCCTTTGGGCTG
CTGGGGATGGGGCCGAGGGTCAGCCCCCTGGGCAGAAGGGTGGCCAGTGGGCCAGCCCTGGGGAGGGG
ATATCCCCCAGTCTGCTCAGGCCCTCAAGCTCCTGGAGACAACCACGTGGTGCCTGTACTGCGC
ACGCGTACGCGGCCGCTCGAG - GFP Tag - GTTTAAAC
```

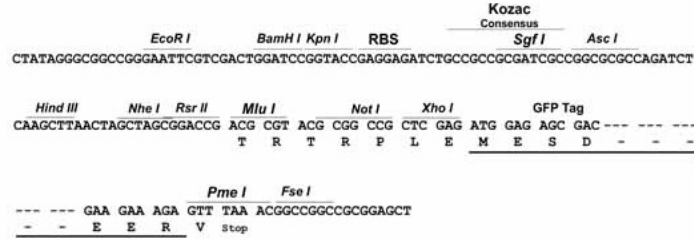
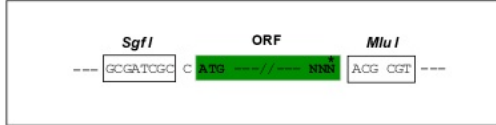
**Protein Sequence:** >Peptide sequence encoded by RG239642  
 Blue=ORF Red=Cloning site Green=Tag(s)

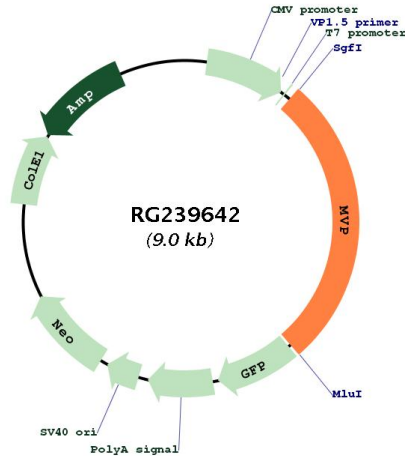
MATEEFIIIRIPPYHYIHVLDQNSNVSrVEVGPKTYIRQDNERVLFAPMRMVTVPPRHYCTVANPVSrDA  
 QGLVLFdVtGQVRLRHADLEIRLAQDPFPLYpGEVLEKDITPLQVVLpNTALHLKALLDFEDKDGDKVv  
 AGDEWLFEgPGTYIPrKEVEVVEIIQATIIIRQNqALRLRARKECWDRDgKERVTGEEWLVTTVGAYLPA  
 VFEEVLDLVDAILTEKTALHLRARRNFRDFRGVSRRTGEEWLVTVQDTEAHVPDVHEEVLGVVPIITL  
 GPHNYCVILDPVgPDGKNQLGQKRvVKGEKSFFLQpGEQLEQGIQDVYVlSEQGLLLRALQPLEEGED  
 EEKVSHQAGDHWLIRGPLEYVPSAKVEVVEERQAIPLDENEGIYVQDVKTGKVRVIGSTYMLTQDEVL  
 WEKELPPGVEELLNKGQDPLADRGEKDTAKSLQPLAPRNKTRVVSyrVPHNAAVQVYDYREKRARHFEV  
 NDRKDPQETAklFSVPDFVGDACKAIASRVRGAVASVTFDDFHkNSARIIRTAVFGFETSEAKGPDGMA  
 LPRRDQAVFPQNGLVVSSVDVQSVepVDQRTRDALQRSVQLAIEITTSQEAaAKHEAQRLEQEARGR  
 LERQKILDQSEAEKARKELLELEALSMAVESTGTAKAEAESRAEAARIEGEGSVLQAKLKAQALAIETE  
 AELQRVQKVRELELVYARAQLELEVSKAQQLAEVEVKKFKQMTEAIGPSTIRDLAVAGPEMQVKLLQSL  
 GLKSTLITDGSTPINLfnTAFGLLGMGPEGQPLGRRVAsGSPSPGEGISPQSAQAPQAPGDNHVVPVLR  
 TRTRPLEMEsDESGLPAMEIECRITGTLNGVEFELVGGGEGTPEQGRMTNKMkSTKGALTFSPYLLSHV  
 MGYGFYHFGTYPSGYENPFLHAINNGGYTNRIEKYEDGGVLHVSFSYRYEAGRVIgDFKVMGTGFPEd  
 SVIFTDKIIRSNATVEHLHPMGDNDLDGSFTRTFSLRDGGYSSVVDSHMHFKSAIHPSILQNGGPMFA  
 FRRVEEDHSNTELGIVEYQHAFKTPDADAGEERV

**Restriction Sites:** SgfI-MluI

Cloning Scheme:

Cloning sites used for ORF Shutting:



**Plasmid Map:**


<b>ACCN:</b>	NM_001293205
<b>ORF Size:</b>	2481 bp
<b>OTI Disclaimer:</b>	The molecular sequence of this clone aligns with the gene accession number as a point of reference only. However, individual transcript sequences of the same gene can differ through naturally occurring variations (e.g. polymorphisms), each with its own valid existence. This clone is substantially in agreement with the reference, but a complete review of all prevailing variants is recommended prior to use. <a href="#">More info</a>
<b>OTI Annotation:</b>	This clone was engineered to express the complete ORF with an expression tag. Expression varies depending on the nature of the gene.
<b>Components:</b>	The ORF clone is ion-exchange column purified and shipped in a 2D barcoded Matrix tube containing 10ug of transfection-ready, dried plasmid DNA (reconstitute with 100 ul of water).
<b>RefSeq:</b>	<a href="#">NM_001293205.1</a> , <a href="#">NP_001280134.1</a>
<b>RefSeq Size:</b>	2587 bp
<b>RefSeq ORF:</b>	2484 bp
<b>Locus ID:</b>	9961
<b>UniProt ID:</b>	<a href="#">Q14764</a>
<b>Cytogenetics:</b>	16p11.2
<b>Protein Families:</b>	Druggable Genome
<b>MW:</b>	92.4 kDa

**Gene Summary:**

This gene encodes the major component of the vault complex. Vaults are multi-subunit ribonucleoprotein structures that may be involved in nucleo-cytoplasmic transport. The encoded protein may play a role in multiple cellular processes by regulating the MAP kinase, JAK/STAT and phosphoinositide 3-kinase/Akt signaling pathways. The encoded protein also plays a role in multidrug resistance, and expression of this gene may be a prognostic marker for several types of cancer. Alternatively spliced transcript variants have been observed for this gene. [provided by RefSeq, May 2012]