

Product datasheet for **RG239640**

SLC9A3 (NM_001284351) Human Tagged ORF Clone

Product data:

Product Type:	Expression Plasmids
Product Name:	SLC9A3 (NM_001284351) Human Tagged ORF Clone
Tag:	TurboGFP
Symbol:	SLC9A3
Synonyms:	DIAR8; NHE-3; NHE3
Mammalian Cell Selection:	Neomycin
Vector:	pCMV6-AC-GFP (PS100010)
E. coli Selection:	Ampicillin (100 ug/mL)



[View online »](#)

ORF Nucleotide
Sequence:

>RG239640 representing NM_001284351.
Blue=ORF Red=Cloning site Green=Tag(s)

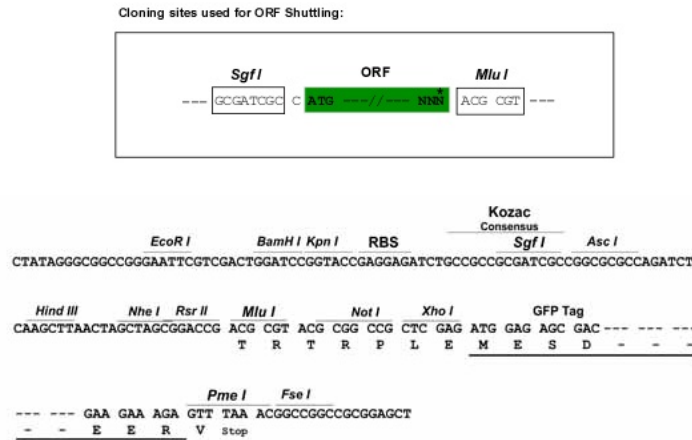
GCTCGTTTAGTGAACCGTCAGAATTTTGTAAACGACTCACTATAGGGCGGCCGGGAATTCGTGACTG
GATCCGGTACCGAGGAGATCTGCCGCC**ACGATCGCC**
ATGTGGGACTCGGGCCCGGGCCCGACCGGGGGCTGCTGCTGGCGCTGGCGCTGGCGGGCTGGCG
CGGGCCGGGGCGTCTGAGGTGGAGCCCGCGCGCGCACGGCGAGAGCGGGGCTTCCAGTGGTCAAC
TTCGAGTGGGCCACGTGCAGGATCCCTACGTCATCGCGCTCTGGATCCTCGTGGCCAGCTTGGCCAAG
ATCGGGTTCCACCTGTCCACAAGGTACCAGCGTGGTCCCGAGAGCGCCCTGCTCATCGTGTGGGC
CTGGTGTGGCGGCATCGTCTGGCGGCCGACCACATCGCGTCTTACACTGACGCCACCGTCTTC
TTCTTCTACCTGTGCCCCCATCGTGTGGACGCGGCTACTTCATGCCCAACCGCTCTTCTCGGC
AACCTGGGACCATCCTGTTGTACGCCGTCTGGGTACCGTGTGGAACCGGGCCACCACCGGGCTGTCC
CTCTACGGCGTCTTCTCAGTGGGCTCATGGGCGACCTGCAGATTGGGCTGCTGGACTTCTCTGTTT
GGCAGCCTCATGGCGGTGTGGACCCGGTGGCCGTCTGGCCGTGTTGAGGAGGTCCATGTCAACGAG
GTCTGTTCATCATCGTCTTCGGGGAGTCTGCTGAACGACGAGTACCCTGGTCTGTACAATGTG
TTTGAATCTTTCGTGGCGCTGGGAGGTGACAACGTGACTGGCGTGGACTGCGTGAAGGGCATAAGTGTCC
TTCTTCGTGGTGAACCTGGGGGGCACGCTGGTGGGGTGGTCTTCGCCTTCTGTGTGCGTGGTGACG
CGCTTACCAAGCATGTGCGTATCATCGAGCCCGCTTCTGTTTCATCATCTCTACCTGTCTACCTG
ACGTCCGAGATGCTGTGCTGTGGCCATCCTCGCCATCACCTTCTGTGGCATCTGCTGTGAGAAGTAT
GTGAAGGCCAACATCTCGGAGCAGTCCGCCACCACCGTGGCTACACCATGAAGATGCTGGCCAGCAGC
GCCGAGACCATCATCTTCATGTTCTGGGTATCTCGCCGTGAACCCGTTTCATCTGGACCTGGAACAG
GCCTTCGTGCTCCTGACGCTGGTCTTTCATCTCCGTGTACCGGGCCATCGGTGTGGTCTCGACAGCCTGG
CTTCTGAACCCGTACCGCATGGTGCAGCTGGAGCCATTGACCAGTGGTCTGTCTACGCGGGCCTG
CGCGGGGCGTGGCCTTTGCCCTGGTGGTCTTCTGGATGGAGACAAGGTCAAGGAGAAGAACCTGTTC
GTCAGCACCAACATCATGTAGTGTCTTACCCTCATCTTCCAGTGGTGAAGGTGAAGAGGAGCGAG
CACCGGGAACCTCGGCTCAACGAGAAGCTGCACGGGCGCGCTTTCGACCACATCTCTCGCCATCGAG
GACATATCCGGACAGATCGGGACAATTATCTCAGAGACAAGTGGTCCCACTTCGACAGGAAGTCTCTC
AGCAGGGTCTCATGAGACGGTCCGCCAGAGTCTCGAGACCGGATCCTGAATGTCTTCCACGAGCTG
AACCTGAAGGATGCCATCAGTACGTGGTGGTGGAGAGCGCCCGGGTCCCTGGCTTCATCCGCTCC
CCCAGCACGACAACGTGGTCAACGTGGACTTACGCCACGATCGTCCACCGTGGAGGCCTCTGTCTCC
TACCTCCTGAGAGAAAATGTCAGCGCTGTCTGCCTGGACATGCAGTCTCTGGAGCAGCAGCGCGGAGC
ATCCGGGACCGGAGGACATGGTACGCACCACACGCTACAGCAGTACCTGTACAAGCCCGCGCAGGAG
TACAAGCATCTGTACAGCCGACACGAGCTCACGCCACGAGGACGAGAAACAGGACCGGAAATCTTC
CACAGGACCATGCGGAAGCGCTGGAGTCTTCAAGTCGACCAAGCTGGGGCTCAACCAGAAACAAGAAG
GCGGCCAAGCTGTACAAGCGGGAGCGTCCCGAGAGCGGAGAAACAGCAGCATCCCAATGGGAAGCTG
CCCATGGAGAGCCCTGCGCAGAAATTTACCATCAAGGAGAAAGACTTGAACCTTTCAGACACCGAGGAG
CCCCCAACTATGATGAGGAGATGAGTGGGGGATCGAGTTCCTGGCTAGTGTACCAAGGACACAGCG
TCCGACTCCCCTGCAGGAATTGACAACCTGTGTTTTCTCCGGACGAGGCCCTGGACCGCAGCCTCCTG
GCCAGGCTGCCGCCCTGGCTGTCTCCCGGGAGACGGTGGTCCCTCGCAGAGGGCCCGCACGAGATT
CCCTACTCTCCCGCACCTTCTGCCGCTGATGCCCTTCCGCTCAGCAGCAAGTCCGTGGACTCCTTC
CTGCAGGCAGACGGCCCCGAGGAGCGGCCCGCCCTCCCGAGTCCACACACATG
ACGCGTACGCGGCCGCTCGAG – GFP Tag – GTTTAAAC

Protein Sequence: >Peptide sequence encoded by RG239640
 Blue=ORF Red=Cloning site Green=Tag(s)

MWGLGARGPDRGLLLALALGGLARAGGVEVEPGGAHGESSGGFQVVTFEWAHVQDPYVIALWILVASLAK
 IGFHLSHKVTSSVPESALLIVLGLVLGGIVWAADHIASFLLTPTVFFFYLLPPIVLDAGYFMPNRLFFG
 NLGTILLYAVVGTVMNAATTGLSLYGVFLSGLMGDLQIGLLDFLLFGLSMAAVDPVAVLAVFEEVHVNE
 VLFIIIVFGESLLNDAVTVVLYNVFSFVALGGDNVTGVDCVKGIVSFFVVSLLGGTLVGVVFAFLLSLVT
 RFTKRVRIIEPGVFVFIISYLSYLTSEMLSLSAILAITFCGICCCQKYVKANISEQSATTVRYTMKMLASS
 AETIIFMFLGISAVNPFIWNTAFVLLTLVFIISYRAIGVVLQWLLNRYRMVQLEPIDQVVSYGGL
 RGAVAFALVLLDGDVKYKKNLNFVSTTIIVVFFTVIFQWLKVKRSEHREPRLEKLNHGRAFDHILSAIE
 DISGQIGHNYLRDKWSHFDRKFLSRVLMRRAQKSRDRILNVFHELNLKDAISYVAEGERRGSLAFIRS
 PSTDNVNVDFTPRSSTVEASVSYLLRENVSAVCLDMQSLEQRRRSIRDAEDMVTHHTLQQYLKPRQE
 YKHLYSRHELTPTEDEKQDREIFHRTMRKRLSEFKSTKGLNQNKKAALKYKRERAQKRRNSSIPNGKL
 PMESPAQNFTIKEKDLELSDTEPPNYDEEMSGGIEFLASVTKDTASDSPAGIDNPVFSPEALDRSLL
 ARLPPWLSPGETVVPSQRARTQIPYSPGTFCRLMPFRLSSKSVDSFLQADGPEERPPAALPESTHM
TRTRPLEMESDESGLPAMEIECRITGTLNGVEFELVGGGEGTPEQGRMTNKMSTKGALTFSPYLLSHV
MGYGFYHFGTYPSTYENPFLHAINNGGYTNRIEKYEDGGVLHVSFSYRYEAGRVIGDFKVMGTGFPEP
SVIFTDKIIIRSNATVEHLHPMGDNDLDGSFTRTFSLRDGGYSSVVDSMHFKSAIHPSILQNGGPMFA
FRRVEEDHSNTELGIVEYQHAFKTPDADAGEERV

Restriction Sites: Sgfl-MluI

Cloning Scheme:



ACCN: NM_001284351

ORF Size: 2475 bp

OTI Disclaimer: The molecular sequence of this clone aligns with the gene accession number as a point of reference only. However, individual transcript sequences of the same gene can differ through naturally occurring variations (e.g. polymorphisms), each with its own valid existence. This clone is substantially in agreement with the reference, but a complete review of all prevailing variants is recommended prior to use. [More info](#)

OTI Annotation: This clone was engineered to express the complete ORF with an expression tag. Expression varies depending on the nature of the gene.

Components: The ORF clone is ion-exchange column purified and shipped in a 2D barcoded Matrix tube containing 10ug of transfection-ready, dried plasmid DNA (reconstitute with 100 ul of water).

RefSeq: [NM_001284351.3](#)

RefSeq Size: 2750 bp

RefSeq ORF: 2478 bp

Locus ID: 6550

UniProt ID: [P48764](#)

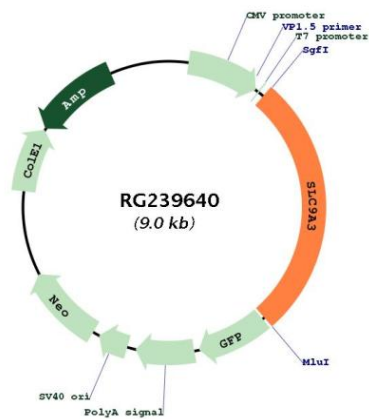
Cytogenetics: 5p15.33

Protein Families: Druggable Genome, Transmembrane

MW: 92.4 kDa

Gene Summary: The protein encoded by this gene is an epithelial brush border Na/H exchanger that uses an inward sodium ion gradient to expel acids from the cell. Defects in this gene are a cause of congenital secretory sodium diarrhea. Pseudogenes of this gene exist on chromosomes 10 and 22. [provided by RefSeq, Mar 2016]

Product images:



Circular map for RG239640