

Product datasheet for **RG239638**

Matriptase 2 (TMPRSS6) (NM_001289000) Human Tagged ORF Clone

Product data:

Product Type:	Expression Plasmids
Product Name:	Matriptase 2 (TMPRSS6) (NM_001289000) Human Tagged ORF Clone
Tag:	TurboGFP
Symbol:	TMPRSS6
Synonyms:	IRIDA; MT2
Mammalian Cell Selection:	Neomycin
Vector:	pCMV6-AC-GFP (PS100010)
E. coli Selection:	Ampicillin (100 ug/mL)



[View online »](#)

ORF Nucleotide
Sequence:

>RG239638 representing NM_001289000.
Blue=ORF Red=Cloning site Green=Tag(s)

```
GCTCGTTTAGTGAACCGTCAGAATTTTGTAAACGACTCACTATAGGGCGGCCGGGAATTCGTGACTG
GATCCGGTACCGAGGAGATCTGCCGCCCGCATCGCC
ATGCCCGTGGCCGAGGCCCCAGGTGGCTGGCGGGCAGGGGACGGAGGTGATGGCGAGGAAGCGGAG
CCGGAGGGGATGTTCAAGGCCTGTGAGGACTCCAAGAGAAAAGCCGGGGCTACCTCCGCTGGTGCCC
CTGTTTGTGCTGCTGGCCCTGCTCGTGCTGGCTTCGGCGGGGTGCTACTCTGGTATTTCTAGGGTAC
AAGGCGGAGGTGATGGTCAGCCAGGTGACTCAGGCAGTCTGCGTGTACTCAATCGCCACTTCTCCAG
GATCTTACCCGCCGGAATCTAGTGCCTTCCGAGTGAACCGCCAAAGCCAGAAGATGCTCAAGGAG
CTCATCACCAGCACCCGCTGGGAATTAACAATACTCCAGTCCGTCTATTCTTTGGGAGGGACCC
CTCACCTGCTTCTTGTGTTTATTCTCAAATCCCGAGCACCGCCGGCTGATGCTGAGCCCGAGGTG
GTGCAGGCACTGCTGGTGGAGGAGCTGCTGCCACAGTCAACAGCTCGGCTGCCCTCCCACAGGGCC
GAGTACGAAGTGGACCCGAGGGCTAGTGATCCTGGAAGCCAGTGTAAAGACATAGCTGCATTGAAT
TCCACGCTGGGTGTTACCGCTACAGCTACGTGGGCCAGGGCCAGTCTCCGGTGAAGGGCCCTGAC
CACCTGGCCTCCAGTGCCTGTGGCACCTGCAGGGCCCAAGGACCTCATGCTCAAACCTCCGGCTGGAG
TGGACGCTGGCAGAGTGGCGGGACCGACTGGCCATGTATGACGTGGCCGGGCCCTGGAGAAGAGGCTC
ATCACCTCGGTGTACGGCTGCAGCCGCCAGGAGCCCGTGGTGGAGTTCTGGCGTCGGGGGCCATCATG
GCGGTCGTCTGGAAGAAGGGCTGCACAGCTACTACGACCCCTTCGTGCTCTCCGTGCAGCCGGTGGTC
TTCCAGGCTGTGAAGTGAACCTGACGCTGGACAACAGGCTCGACTCCAGGGGCTCCTCAGCACCCG
TACTTCCCAGCTACTACTCGCCCCAAACCCACTGCTCCTGGCACCTCACGGTGCCTCTCTGGACTAC
GGCTTGGCCCTCTGTTTGTATGCCTATGCATGAGGAGGCAGAAGTATGATTTGCCGTGCACCCAGGGC
CAGTGGACGATCCAGAACAGGAGGCTGTGTGGCTTGCATCCTGCAGCCCTACGCCGAGAGGATCCCC
GTGGTGGCCACGGCCGGATCACCATCAACTTCACTCCAGATCTCCCTCACGGGCCCGGTGTGCGG
GTGCACTATGGCTTGTACAACAGTCCGACCCCTGCCCTGGAGAGTTCCTCTGTTCTGTGAATGGACTC
TGTGTCCCTGCCTGTGATGGGGTCAAGGACTGCCCAACGGCCTGGATGAGAGAACTGCGTTTGCAGA
GCCACATTCAGTGCAAAGAGGACAGCACATGCATCTCACTGCCAAGGTCTGTGATGGGCAGCCTGAT
TGTCTCAACGGCAGCGACGAAGAGCAGTGCCAGGAAGGGGTGCCATGTGGGACATTCACCTTCCAGTGT
GAGGACCCGAGCTGCGTGAAGAAGCCAAACCCGAGTGTGATGGGCGGCCGACTGCAGGGACGGCTCG
GATGAGGAGCACTGTGACTGTGGCTCCAGGGCCCTCCAGCCGATTGTTGGTGGAGCTGTGTCCTCC
GAGGGTGAGTGGCCATGGCAGGCCAGCCTCCAGGTTCCGGGTGCACACATCTGTGGGGGGCCCTCATC
GCTGACCCTGGGTGATAACAGCTGCCACTGTTCCAGGAGGACAGCATGGCCTCCACGGTGTGTGG
ACCGTGTCTCTGGCAAGGTGTGGCAGAATCGCGCTGGCCTGGAGAGGTGTCCTTCAAGGTGAGCCGC
CTGCTCCTGCACCCGTACCACGAAGAGGACAGCCATGACTACGACGTGGCGCTGTGCAGCTCGACCAC
CCGGTGGTGCCTCGGCCGCCGTGCGCCCCGTCTGCCTGCCCGCGCGCTCCCACTTCTTCCAGCCCGC
CTGCACTGCTGGATTACGGGCTGGGGCCCTTGCAGGAGGGCCCTACGGGCGGATGCTGTGGCCCTA
TTTTATGGATGGAGAAACCAAGGCTCAGAGACATGTTGCTGCCCCATCAGCAACGCTCTGCAGAAAGTG
GATGTGCAGTTGATCCCACAGGACCTGTGCAGCGAGGTCTATCGCTACCAGGTGACGCCACGCATGCTG
TGTCCCGCTACCGCAAGGGCAAGAAGGATGCCGTGTCAGGGTACTCAGGTGGTCCGCTGGTGTGCAAG
GCACTCAGTGGCCGCTGGTTCTTGGCGGGCTGGTCAAGTGGGGCTGGGCTGTGGCCGGCCCTAACTAC
TTCGGCGTCTACACCCGATCACAGGTGTGATCAGCTGGATCCAGCAAGTGGTGACC
ACGCGTACGCGGCCGCTCGAG - GFP Tag - GTTAAAC
```

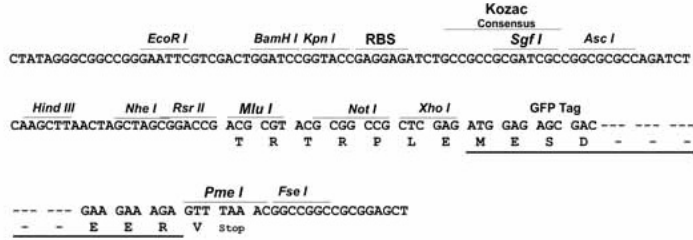
Protein Sequence: >Peptide sequence encoded by RG239638
Blue=ORF Red=Cloning site Green=Tag(s)

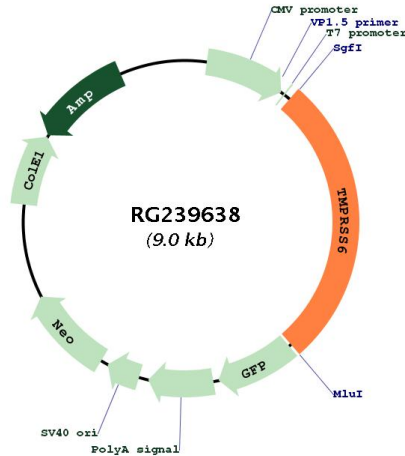
MPVAEAPQVAGGQDGGDGEAEPEGMFKACEDSKRKARGYLRLVPLFVLLALLVLASAGVLLWYFLGY
KAEVMVSQVYSGSLRVLNRHFSQDLTRRESSAFRSETAKAQKMLKELITSTRLGTYNSSSVYSGGEGP
LTCFFWFILQIPEHRRML SPEVVQALLVEELLSTVNSSAAMPYRAEYEVDEGLVILEASVKDIAALN
STLGCYRYSYVGQGVLRRLKGPDLASSCLWHLQGPKDLMLKLLEWTLAECRDLAMVDVAGPLEKRL
ITSVYGCSRQEPVVEVLASGAIMAVVWKKGLHSYDPPFVLSVQPVVVFQACEVNLTLNRLDSQGVSTP
YFPSYSPQTHCSWHLTVPSLDYGLALWFDAYALRRQKYDLPCTQGQWTIQNRRLCGLRILQPYAERIP
VVATAGITINFTSQISL TGPGVRVHYGLYNQSDPCPGEFLCSVNLGCVACDGVKDCPNGLDERNCVCR
ATFQCKEDSTCISL PKVCDGQPDCLNGSDEEQCQEGVPCGTFTFQCEDRSCVKKPNPQCDGRPDCRDGS
DEEHDCGLQGPSRIVGGAVSSEGEWPWQASLQVRGRHICGGAL IADRWVITAAHCFQEDSMASVTLW
TVFLGKVVQNSRWPGEVSFKVSRLLLHPYHEEDSHDYDVALQLDHPVVRSAAVRPVCLPARSHFFEPG
LHCWITGWGALREGALRADAVALFYGWRNQGSETCCCPISNALQKVDVQLIPQDLCSEVYRYQVTPRML
CAGYRKGKKDACQGDSSGGLVCKALSGRWFLAGLVSWGLGGRPNYFGVYTRITGVISWIQQVVT
TRTRPLEMESDESGLPAMEIECRITGTLNGVEFELVGGGEGTPEQGRMTNKMSTKGALTFSPYLLSHV
MGYGFYHFGTYPSTYENPFLHAINNGGYTNTRIEKYEDGGVLHVSFSYRYEAGRVIGDFKVMGTGFPEP
SVIFTDKIIIRS NATVEHLHPMGDNDLDGSFTRTFSLRDGGYSSVVDSMHFKSAIHPSILQNGGPMFA
FRRVEEDHSNTELGIVEYQHAFKTPDADAGEERV

Restriction Sites: Sgfl-Mlul

Cloning Scheme:

Cloning sites used for ORF Shutting:



Plasmid Map:


ACCN: NM_001289000

ORF Size: 2472 bp

OTI Disclaimer: The molecular sequence of this clone aligns with the gene accession number as a point of reference only. However, individual transcript sequences of the same gene can differ through naturally occurring variations (e.g. polymorphisms), each with its own valid existence. This clone is substantially in agreement with the reference, but a complete review of all prevailing variants is recommended prior to use. [More info](#)

OTI Annotation: This clone was engineered to express the complete ORF with an expression tag. Expression varies depending on the nature of the gene.

Components: The ORF clone is ion-exchange column purified and shipped in a 2D barcoded Matrix tube containing 10ug of transfection-ready, dried plasmid DNA (reconstitute with 100 ul of water).

RefSeq: [NM_001289000.2](#)

RefSeq Size: 3196 bp

RefSeq ORF: 2475 bp

Locus ID: 164656

UniProt ID: [Q8IU80](#)

Cytogenetics: 22q12.3

Protein Families: Druggable Genome, Protease, Transmembrane

MW: 91.8 kDa

Gene Summary: The protein encoded by this gene is a type II transmembrane serine proteinase that is found attached to the cell surface. The encoded protein may be involved in matrix remodeling processes in the liver. Alternative splicing results in multiple transcript variants. [provided by RefSeq, Jan 2014]