

## Product datasheet for **RG239635**

### CTIP2 (BCL11B) (NM\_001282238) Human Tagged ORF Clone

#### Product data:

Product Type:	Expression Plasmids
Product Name:	CTIP2 (BCL11B) (NM_001282238) Human Tagged ORF Clone
Tag:	TurboGFP
Symbol:	BCL11B
Synonyms:	ATL1; ATL1-alpha; ATL1-beta; ATL1-delta; ATL1-gamma; CTIP-2; CTIP2; hRIT1-alpha; IDDFSTA; IMD49; RIT1; ZNF856B
Mammalian Cell Selection:	Neomycin
Vector:	pCMV6-AC-GFP (PS100010)
E. coli Selection:	Ampicillin (100 ug/mL)



[View online »](#)

**ORF Nucleotide Sequence:**

>RG239635 representing NM\_001282238.  
 Blue=ORF Red=Cloning site Green=Tag(s)

```

GCTCGTTTAGTGAACCGTCAGAATTTTGTAAACGACTCACTATAGGGCGGCCGGGAATTCGTGACTG
GATCCGGTACCGAGGAGATCTGCCGCCGCGATCGCC
ATGTCCCGCCCAAACAGGGCAACCCGCGAGCACTTGCCAGAGGGAGCTCATCACCCAGGCTGACCAT
GTGGAGGCCCCATCCTCGAAGAAGACGAGGGTCTGGAGATAGAGGAGCCAAGTGGCCTGGGGTATG
GTGGGTGGCCCCGACCTGACCTGCTCACTGTGGCCAGTGTCAAATGAACTTCCCTTGGGGACATC
CTGGTTTTTATAGAGCACAAAAGGAAGCAGTGTGGCGGCAGCTTGGGTGCCTGCTATGACAAGGCCCTG
GACAAGGACAGCCCGCCACCTCCTCACGCTCCGAGCTCAGGAAAGTGTCCGAGCCGGTGGAGATCGGG
ATCCAAGTCAACCCCGACGAAGATGACCACCTGCTCTACCCACGAAAGGCATCTGTCCAAGCAGGAG
AACATTGCAGGTAAGATGAGCCTTCCAGCTACATTTGCACAACATGCAAGCAGCCCTTCAACAGCGCG
TGGTTCCTGCTGCAGCACGCGCAGAACACGCACGGCTTCCGCATCTACCTGGAGCCCGGGCCGCCAGC
AGCTCGCTCACGCCGCGCTCACCATCCCGCCCGCTCGGGCCGAGGCCGTGGCGCAGTCCCCGCTC
ATGAATTTCTGGGCGACAGCAACCCCTTCAACCTGCTGCGCATGACGGGCCCATCTCGGGGACCAC
CCGGGCTTCGGCGAGGGCCGCTGCCGGCACGCCGCTCTCTTCACTCCCGCCGCGCCACCACCTG
GACCCGCACCCGCTCAGTGCCGAGGAGATGGGGCTCGTCGCCACGCCAGTGCCTTCGACCCAGTGC
ATGCGCCTGAACCCATGGCCATCGACTCGCCGCCATGGACTTCTCGCGCGGCTCCGCGAGTGGCG
GGCAACAGCTCCACGCCCGCCGCTGTCCCGGGCCGCGCAACCCATGCACCCGGCTCCTGAACCC
TTCCAGCCAGCCCAAGTCCCGTTCTGAGCACGCCCGCTGCCGCCATGCCCCCTGGCGGCACG
CCGCCCCGACGCCAGCAAGAGCAAGTCTGCGAGTTCTGCGGCAAGACCTTCAAGTTCAGAGC
AATCTCATCGTGACCGCGCAGTACACGGGCGAGAAGCCCTACAAGTCCAGCTGTGCGACCAGCG
TGGTCCAGGCGCAGCAAGCTCAAGCGCCACATGAAGACGCACATGCACAAGGCCGGCTCGTGGCCG
CGTCCGACGACGGGCTCTCGGCCGCGAGCTCCCGGAGCCCGCACAGCGAGCTGGCGGGCGAGGGC
CTCAAGCGCGCCGACGGTACTTCCGCCACCAGAGAGCGACCCGTCGCTGGGCCACGAGCCGGAGGAG
GAGGACGAGGAGGAGGAGGAGGAGGAGGAGGAGTGTACTGGAGAACGAGAGCCGGCCCGAGTGGAGC
TTCAGCATGGACTCGGAGCTGAGCCGAACCGCGAGAACGGCGGTGGTGGGTGCCCGGGTCCCGGGC
GCGGGGGCGGCGCGCAAGGCGTGGCTGACGAGAAGGCGTGGTGTGGGAAGGTGATGGAGAAC
GTGGCCTAGGCGCACTGCCGAGTACGGCGAGTCTTGGCCGACAAGCAGAAGCGCGGCCCTTCTG
AAGCGTGGCGGGCGGGGACGCGGGCAGCAGCAGCAGCGGGCGGCTGCGGGGACCGGGCGCG
GGCGGCGGGTCAACGGGCGGGGGCGGCTTCCGCCAGGCACCGAGCCCTTCCCGGGCTCTTCCG
CGCAAGCCCGCGCGCTGCCAGCCCGGGCTCAACAGCGCCCAAGCGCATCAAGGTGGAGAAGGAC
CTGGAGCTGCCGCCCGCGCTCATCCCGTCCGAGAAGTGTACTCGCAGTGGTGGTGGGCTACGCG
GCGTCGCGGCACTTATGAAGGACCCCTTCTGGGCTTACGGACGCACGACAGTCCGCTTCCGCCAG
TCGTCCGAGCACTCGTCCGAGAACGGCAGCCTGCGCTTCTCCACGCCCGGGGACCTGCTGGACGGC
GGCCTCTCGGGCCGACGGCACGGCCAGCGGAGGAGCAGCACCAGCCTGGCGGCCCGGGCCCGGG
CGGCCAGCTCCAAGGAGGGCCCGCAGCGACACGTGCGAGTACTGCGCAAGGTGTTCAAGAAGTGC
AGCAACTTGACGGTGCACCGCGGAGCCACACCGGCGAGCGGCTTACAAGTGGAGCTGTGCAACTAC
GCGTGGCGCAGAGCAGCAAGCTCACGCCACATGAAGACGCACGGGCGAGTCCGCAAGGAGGTGAC
CGCTGCGACATCTGCCAGATGCCCTTACGCGTCTACAGCACCTGGAGAAACACATGAAAAGTGGCAC
GGCAGCACTTGTGACTAACGACGTAAAATCGAGCAGGCCGAGAGGAGC
AGCGGACCGACGCGTACGCGGCCGCTCGAG - GFP Tag - GTTTAAAC
  
```

**Protein Sequence:** >Peptide sequence encoded by RG239635  
 Blue=ORF Red=Cloning site Green=Tag(s)

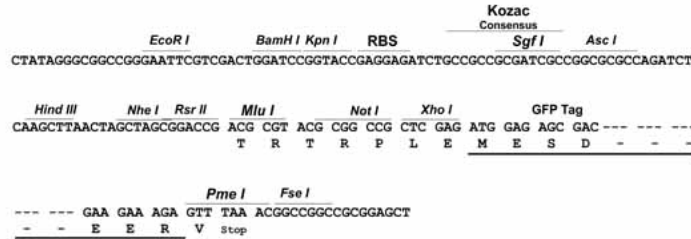
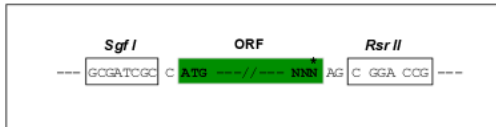
```

MSRRKQGNPQHL SQRELITQADHVEAAILEEDEGLEIEEPSGLGLMVGGPDPDLL TCGQCQMNFLGDI
LVFIEHKRKQCGGSLGACYDKALDKSPPSSRSELRKVSEPVEIGIQVTPDEDDHLLSPTKGICPKQE
NIAGKDEPSSYICTTCKQPFNSAWFLLQHAQNTGHGFRIYLEPGPASSSLTPRLTIPPLGPEAVAQSP
MNFLGDSNPFNLLRMTGPILRDHPGFGEGRLLPGTPPLFSPPPRHLLDPHRLSAEEMGLVAQHPSAFDRV
MRLNPMAIDSPAMDFSRRLRELAGNSSTPPPVSPPGRGNPMHRLLNPFQSPKSPFLSTPPLPPMPPGGT
PPPQPPAKSKSCEF CGKTFKFQSNLIVHRRSHTGEKPYKCQLCDHACSQASKLKRHMKTHMHKAGSLAG
RSDDGLSAASSPEPGTSELAGEGLKAADGDFRHHESDPSLGHEPEEEEEEEEEEEEEELLENESRPES
FSMDSEL SRNRENGGGVPGVPGAGGGAALADEKALVLGKVMENVGLGALPQYGELLADKQKRGAF
KRAAGGGDAGDDDAGGCGDAGAGGAVNGRGGGFAPGTEPFPGLFPRKPAPLPSPGLNSAAKRIKVEKD
LELPPAALIPSENVYSQWL VGYAASRHFMKDPFLGFTDARQSPFATSSEHSSENGSLRFSTPPGDLLDG
GLSGRSGTASGGSTPHLGGPGGRPSSKEGRRSDTCEYCGKVFKNCSNLTVHRRSHTGERPYKCELCNY
ACAQSSKLTRHMKTHGQIGKEVYRCDICQMPFSVYSTLEKHMKKWHGEHLLTNDVKIEQAERS
SGPTRTRPLEMESDESGLPAMEIECRITGTLNGVEFELVGGGEGTPEQGRMTNKMSTKGALTFSPYLL
SHVMGYGFYHFGTYPSTYSGYENPFLHAINNGGYTNTRIEKYEDGGVHLVFSYRYEAGRVI GDFKVMGTGF
PEDSVIFTDKIIRS NATVEHLHPMGDNDLDGSFTRTFLRDGGYSSVVD SHMHFKSAIHPSILQNGGP
MFAFRRVEEDHSNTELGIVEYQHAFKTPDADAGEERV
  
```

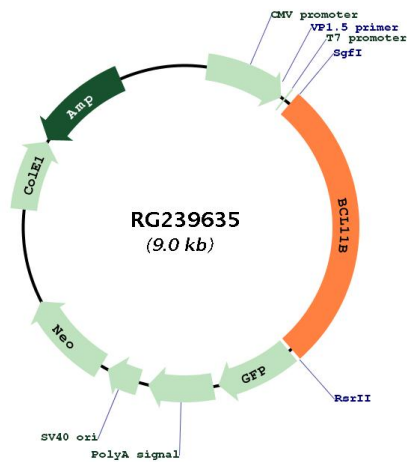
**Restriction Sites:** Sgfl-RsrII

Cloning Scheme:

Cloning sites used for ORF Shuttling:



Plasmid Map:



<b>ACCN:</b>	NM_001282238
<b>ORF Size:</b>	2466 bp
<b>OTI Disclaimer:</b>	The molecular sequence of this clone aligns with the gene accession number as a point of reference only. However, individual transcript sequences of the same gene can differ through naturally occurring variations (e.g. polymorphisms), each with its own valid existence. This clone is substantially in agreement with the reference, but a complete review of all prevailing variants is recommended prior to use. <a href="#">More info</a>
<b>OTI Annotation:</b>	This clone was engineered to express the complete ORF with an expression tag. Expression varies depending on the nature of the gene.
<b>Components:</b>	The ORF clone is ion-exchange column purified and shipped in a 2D barcoded Matrix tube containing 10ug of transfection-ready, dried plasmid DNA (reconstitute with 100 ul of water).
<b>RefSeq:</b>	<a href="#">NM_001282238.1</a> , <a href="#">NP_001269167.1</a>
<b>RefSeq Size:</b>	7828 bp
<b>RefSeq ORF:</b>	2469 bp
<b>Locus ID:</b>	64919
<b>UniProt ID:</b>	<a href="#">Q9C0K0</a>
<b>Cytogenetics:</b>	14q32.2
<b>Protein Families:</b>	Druggable Genome
<b>MW:</b>	88.5 kDa
<b>Gene Summary:</b>	This gene encodes a C2H2-type zinc finger protein and is closely related to BCL11A, a gene whose translocation may be associated with B-cell malignancies. Although the specific function of this gene has not been determined, the encoded protein is known to be a transcriptional repressor, and is regulated by the NURD nucleosome remodeling and histone deacetylase complex. Four alternatively spliced transcript variants encoding distinct isoforms have been found for this gene. [provided by RefSeq, Aug 2013]