

Product datasheet for **RG239630**

ADAM29 (NM_001278126) Human Tagged ORF Clone

Product data:

Product Type:	Expression Plasmids
Product Name:	ADAM29 (NM_001278126) Human Tagged ORF Clone
Tag:	TurboGFP
Symbol:	ADAM29
Synonyms:	CT73; svph1
Mammalian Cell Selection:	Neomycin
Vector:	pCMV6-AC-GFP (PS100010)
E. coli Selection:	Ampicillin (100 ug/mL)



[View online »](#)

ORF Nucleotide Sequence:

>RG239630 representing NM_001278126.
 Blue=ORF Red=Cloning site Green=Tag(s)

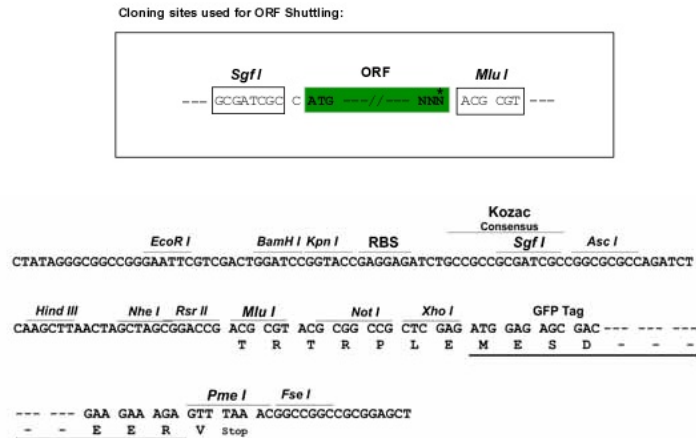
```
GCTCGTTTAGTGAACCGTCAGAATTTTGTAAACGACTCACTATAGGGCGGCCGGGAATTCGTGACTG
GATCCGGTACCGAGGAGATCTGCCGCCACGATCGCC
ATGAAGATGTTACTCCTGCTGCATTGCCTTGGGGTGTTCCTGTCCTGTTCTGGACACATCCAGGATGAG
CACCCCAATATCACAGCCCTCCGGATGTGGTGATTCTGTGAGGATAACTGGCACCACCAGAGGCATG
ACACCTCCAGGCTGGCTCCTATATCCTGCCCTTTGGAGGCCAGAAACACATTATCCACATAAAGGTC
AAGAAGCTTTTGTTCCAAACCTCCCTGTGTTACCTACACAGACCAGGGTGTATCCTTGAGGAC
CAGCCATTTGTCAGAATAACTGCTACTATCATGGTTATGTGGAAGGGGACCAGAATCCCTGGTTTCC
CTCAGTACCTGTTTTGGGGTTTTCAAGGAATATTACAGATAAATGACTTTGCTTATGAAATCAAGCCC
CTAGCATTTTCTACCACGTTTGAACATCTGGTATAACAAGATGGACAGTGAGGAGAAAACAATTTCAACC
ATGAGATCCGGATTTATGCAAAATGAAATAACATGCCAATGGAATTTGAAGAAATTGATAATCCACT
CAGAAGCAAAGTCTTATGTGGGCTGGTGGATCCATTTTAGGATTGTTGAAATTGTAGTCGTCATTGAT
AATTATCTGTACATTCGTTATGAAAGGAACGACTCAAAGTTGCTGGAGGATCTATATGTTATTGTTAAT
ATAGTGGATTCCATTTTGGATGTCAATGGTGTAAAGGTGTTATTATTTGGTTTGGAGATCTGGACCAAT
AAAAACCTCATTGTAGTAGATGATGTAAGGAAATCTGTGCACCTGTATTGCAAGTGAAGTCGGAGAAC
ATTACGCCCGGATGCAACATGACACCTCACATCTTTTCACAACTCTAGGATTAAGAGGGTTAAGTGGC
ATAGGAGCTTTTAGAGGAATGTGTACACCACACCGTAGTTGTGCAATTGTTACTTTCATGAACAAAAC
TTGGGCACTTTTTCAATTGCAGTGGCTCATCATCTAGGTCATAATTTGGGCATGAACCATGATGAGGAT
ACATGTCGTTGTTCAACCTAGATGCATAATGCATGAAGGCAACCCACCAATAACTAAATTTAGCAAT
TGTAGTTATGGTATTTTGGGAATATACTGTAGAGAGGACAAAGTGTGTTGCTTGAACAGTACACACA
AAGGACATCTTTAATGTGAAGCGCTGTGGGAATGGTGTGTTGAAAGAAGGAGAAGAGTGTGACTGTGGA
CCTTTAAAGCATTGTGCAAAAGATCCCTGCTGTCTGCAAAATTGCACTCTGACTGATGGTTCTACTTGT
GCTTTTGGGCTTTGTTGCAAAGACTGCAAGTCCCTACCATCAGGGAAAAGTGTGTAGAAAGGAGGTCAAT
GAATGTGATCTTCCAGAGTGGTGAATGGTACTTCCCATAAGTGCCAGATGACTTTTATGTGGAAGAT
GGAATTCCTGTAAGGAGAGGGGCTACTGCTATGAAAAGAGCTGTGATGACCGCAATGAACAGTGTAGG
AGGATTTTGGTGCAGGCGCAAATACTGCAAGTGAGACTTGCTACAAAGAATTGAACACCTTAGGTGAC
CGTGTGGTCACTGTGGTATCAAAAATGCTACATATAAAGTGAATATCTCAGATGTCCAGTGTGGA
AGAATTCAGTGTGAGAATGTGACAGAAATCCCAATATGAGTGATCATACTACTGTGCATTGGGCTCGC
TTCAATGACATAATGTGCTGGAGTACTGATTACCATTTGGGGATGAAGGGACCTGATTTGGTGAAGTG
AAAGATGGAACAGAGTGTGGGATAGATCATATATGCATCCACAGGCACTGTGTCATATAACCATCTTG
AATAGTAATTGCTCACCTGCATTTTGAACAAGAGGGGCATCTGCAACAATAAACATCACTGCCATTGC
AATTATCTGTGGGACCCTCCCAACTGCCTGATAAAAGGCTATGGAGGTAGTGTGACAGTGGCCACCC
CCTAAGAGAAAGAAGAAAAAGAAGTTCTGTTATCTGTGTATATTGTTGCTTATTGTTTTGTTATTTTA
TTATGTTGCTTTTATCGACTTTGTAAGAAAGTAAACCAATAAAAAAGCAGCAAGATGTTCAAACCTCA
TCTGCAAAAGAAGAGGAAAAAATTCAGCGTCGACCTCATGAGTTACCTCCCAGAGTCAACCTTGGGTG
ATGCCTTCCCAGAGTCAACCTCCTGTGACGCCTTCCCAGAGTCACTCCTCAGGTGATGCCTTCCCAGAGT
CAACCTCCTGTGACACCCTCCCAGAGTCAACCTCGGGTGTGCCTTCTCAGAGTCAACCTCCTGTGATG
CCTTCCCAGAGTCACTCAGTTGACGCCTTCCCAGAGTCAACCTCCTGTGACACCCTCCCAGAGGCAA
CCTCAGTTGATGCCTTCCCAGAGTCAACCTCCTGTGACGCCTCC
ACGCGTACGCGGCCGCTCGAG – GFP Tag – GTTTAAAC
```

Protein Sequence: >Peptide sequence encoded by RG239630
 Blue=ORF Red=Cloning site Green=Tag(s)

```

MKMLLLLHCLGVFLSCSGHIQDEHPQYHSPPDVVIPVRITGTTTRGMTPPGWL SYILPFGGQKHIIHIKV
KKLLFSKHLPVFTYTDQGAILEDQPFVQNNCYHGYVEGDPEL VSLSTCFGGFQILQINDFAYEIKP
LAFSTT FEHLVYKMDSEEKQFSTMRSGFMQNEITCRMEFEEIDNSTQKQSSYVGVWIIHFRIVEIVVID
NYLYIRYERND SKLLEDLYVIVNIVDSILDVIGVKVLLFGL EIWTNKNLIVVDDVRKSVHLYCKWKSEN
ITPRMQHDTSHLFTTLGLRGLSGIGAFRGMCTPHRSCAIVTFMNKTLGTF SIAVAHHLGHNLMNHDED
TCRCSQPRCIMHEGNPPI TKFSNCSYGFWEYTVERTKCLETVHTKDI FNVKRCNGNVVEEGEECDG
PLKHCAKDPCCLSNCTLTDGSTCAFGLCCKDCKFLPSGKVC RKEVNECDLPEWCNGTSHKCPDDFYVED
GIPCKERGYCYEKSCHDRNEQCRRIFGAGANTASET CYKELNTLGDRVGHCGIKNATYIKCNI SDVQCG
RIQCENVTEIPNMSDHTTVHWARFNDIMCWSTDYHLGMKGPDI GEVKDGTGECIDHIC IHRHCVHITIL
NSNCSPAFCNKRGICNNKHHCHCNLWDPPNCLIKGYGGSVDSG PPPKRRKKKKFCYLC ILLLIVLFIL
LCCLYRLCKKSKPIKKQDQVQTPSAKEEIKIQR RPHELPPQSQPWVMP SQSQPPVTPSQSHPQVMP SQS
QPPVTPSQSQPRVMP SQSQPPVMP SQSHPQLTPSQSQPPVTPSQ RQPQLMPSQSQPPVTPS
TRTRPLEMESDESGLPAMEIECRITGTLNGVEFELVGGGEGTPEQGRMTNKMKSTKGALTFSPYLLSHV
MGYGFYHFGTYP SGYENPFLHAINNGGYTNRIEKYEDGGVLHVSFSYRYEAGRVIGDFKVMGTGFPE D
SVIFTDKIIRS NATVEHLHPMGDNDLDGSFTRTFSLRDGGYSSVVDSHMHF KSAIHPSILQNGGPMFA
FRRVEEDHSNTELGIVEYQHAFKTPDADAGEERV
  
```

Restriction Sites: Sgfl-Mlul

Cloning Scheme:


ACCN: NM_001278126

ORF Size: 2460 bp

OTI Disclaimer: The molecular sequence of this clone aligns with the gene accession number as a point of reference only. However, individual transcript sequences of the same gene can differ through naturally occurring variations (e.g. polymorphisms), each with its own valid existence. This clone is substantially in agreement with the reference, but a complete review of all prevailing variants is recommended prior to use. [More info](#)

OTI Annotation: This clone was engineered to express the complete ORF with an expression tag. Expression varies depending on the nature of the gene.

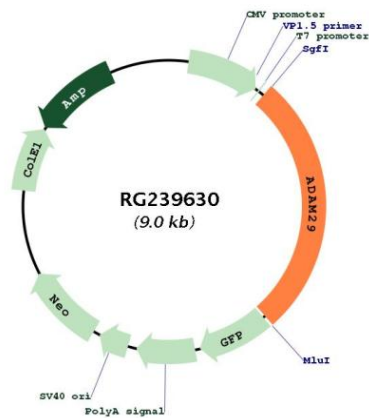
Components: The ORF clone is ion-exchange column purified and shipped in a 2D barcoded Matrix tube containing 10ug of transfection-ready, dried plasmid DNA (reconstitute with 100 ul of water).

RefSeq: [NM_001278126.1](#), [NP_001265055.1](#)

RefSeq Size: 3379 bp
 RefSeq ORF: 2463 bp
 Locus ID: 11086
 UniProt ID: [Q9UKF5](#)
 Cytogenetics: 4q34.1
 Protein Families: Druggable Genome, Transmembrane
 MW: 92.8 kDa

Gene Summary: This gene encodes a member of the ADAM (a disintegrin and metalloprotease domain) family. Members of this family are membrane-anchored proteins structurally related to snake venom disintegrins, and have been implicated in a variety of biological processes involving cell-cell and cell-matrix interactions, including fertilization, muscle development, and neurogenesis. The protein encoded by this gene is highly expressed in testis and may be involved in human spermatogenesis. Alternative splicing results in multiple transcript variants that encode the same protein. [provided by RefSeq, Jul 2008]

Product images:



Circular map for RG239630