

Product datasheet for **RG239613**

Miz1 (ZBTB17) (NM_001287603) Human Tagged ORF Clone

Product data:

Product Type:	Expression Plasmids
Product Name:	Miz1 (ZBTB17) (NM_001287603) Human Tagged ORF Clone
Tag:	TurboGFP
Symbol:	ZBTB17
Synonyms:	MIZ-1; pHZ-67; ZNF60; ZNF151
Mammalian Cell Selection:	Neomycin
Vector:	pCMV6-AC-GFP (PS100010)
E. coli Selection:	Ampicillin (100 ug/mL)



[View online »](#)

ORF Nucleotide Sequence:

>RG239613 representing NM_001287603.
 Blue=ORF Red=Cloning site Green=Tag(s)

```

GCTCGTTTAGTGAACCGTCAGAATTTTGTAAACGACTCACTATAGGGCGGCCGGGAATTCGTGACTG
GATCCGGTACCGAGGAGATCTGCCGCCCGCATCGCC
ATGGACTTTCCCCCCAGCACAGCCAGCATGTCTTGGAAACAGCTGAACCAGCAGCGGCAGCTGGGGCTTCTC
TGTGACTGCACCTTTGTGGTGGACGGTTCACCTTTAAGGCTCATAAAGCAGTGTGGCGCCTGCAGC
GAGTACTTCAAGATGCTCTTCGTGGACCAGAAGGACGTGGTGCACCTGGACATCAGTAACCGGCAGGC
CTGGGGCAGGTGCTGGAGTTTATGTACACGGCCAAGCTGAGCCTGAGCCCTGAGAACGTGGATGATGTG
CTGGCCGTGGCCACTTTCCTCCAATGCAGGACATCATCACGGCCTGCCATGCCCTCAAGTCACTTGCT
GAGCCGGTACCAGCCCTGGGGAAATGCGGAGGCCTTGGCCACAGAAGGAGGGGACAAGAGAGCCAAA
GAGGAGAAGGTGGCCACCAGCACGCTGAGCAGGCTGGAGCAGGCAGGACGCAGCACCCATAGGCCCC
AGCAGGGACCTCAAGGAGGAGCGCGCGGTCCAGGCCAGAGTGGCCAGCGGTGCAGAGCAGACAGAG
AAAGCCGATGCGCCCGGGAGCCCGCCTGTGGAGCTCAAGCCAGACCCACAGTGGCATGGCTGCT
GCAGAAGCTGAGGCCGCTTGTCCGAGAGCTCGGAGCAAGAAATGGAGGTGGAGCCCGCCGAAAGGG
GAAGAGGAGCAAAAGGAGCAAGAGGAGCAAGAGGAGGAGGGCGCAGGGCCAGCTGAGGTCAAGGAGGAG
GTTCCCAAGCTGGAGAACGGAGAGGCCCCCGAGGAGAACGAGAATGAGGAGTCAGCGGCCACAGACTCG
GGCAGGAGCTCGGCTCCGAGGCCCGGGCCTGCGCTCAGGCACCTACGGCGACCGCACGGAGTCCAAG
GCCTACGGCTCCGTATCCACAAGTGGCAGGACTGTGGGAAGGAGTTCACGCACACGGGAACTTCAAG
CGGCACATCCGCATCCACACGGGGGAGAAGCCCTTCTCGTGCCGGGAGTGCAGCAAGGCCTTTCCGAC
CCGGCCCGTGAAGGCCATGAGAAGACGCACAGCCCTGAAGCCCTACGGCTGCGAGGAGTGGGG
AAGAGTACCGCCTCATCAGCCTGCTGAACCTGCACAAGAAGCGCACTGGGCGAGGCGCGCTACCGC
TGCGAGGACTGCGCAAGCTCTTACCACCTCGGCAACCTCAAGCGCCACCAGTGGTGCACACGGC
GAGAAGCCCTACCAGTGGGACTACTGCGGCCGCTCCTTCTCCGACCCACTTCCAAGATGCGCCACCTG
GAGACCCACGACACGGACAAGGAGCACAAGTGCCACACTGCGACAAGAAGTTCAACCAGGTAGGGAAC
CTGAAGGCCACCTGAAGATCCACATCGCTGACGGGCCCTCAAGTGCCGAGAGTGTGGGAAGCAGTTC
ACCACCTCAGGGAACCTGAAGCGGCACCTTCGGATCCACAGCGGGGAGAAGCCCTACGTGTGCATCCAC
TGCCAGCGACAGTTTGCAGACCCCGCGCTCTGCAGCGGCACGTCCGCATTACACAGGTGAGAAGCCA
TGCCAGTGTGTGATGTGCGGTAAGGCCTTACCCAGGCCAGTCCCTCATCGCCACGTGCGCCAGCAC
ACCGGGGAGAAGCCCTACGTCTGCGAGCGCTGCGGCAAGAGATTCGTCCAGTCCAGCCAGTTGGCCAAT
CATATTCGCCACCACGACAACATCCGCCACACAAGTGCAGCGTGTGCAGCAAGGCCTTCGTGAACGTG
GGGACCTGTCCAAGCACATCATATTCACACTGGAGAGAAGCCCTACCTGTGTGATAAGTGTGGCGT
GGCTTCAACCGGGTAGACAACCTGCGCTCCACAGTGAAGACCGTGCACCAGGGCAAGGCAGGCATCAAG
ATCCTGGAGCCCGAGGAGGGCAGTGAAGTGCAGCGTGGTCACTGTGGATGACATGGTCAAGTGGCTACC
GAGGCACTGGCAGCGACAGCCGCTCACTCAGCTCACAGGCCCTGCGACTCTGCCCGCAGTGGTGCCGTG
GGAGCTGCAGTGCAGCCGATGAGACGGAAGTCTGAAGGCCGAGATCAGCAAAGCTGTGAAGCAAGTG
CAGGAAGAAGACCCCAACTCACATCCTTACGCTGTGACTCCTGTGGGACAAGTTTCTGGATGCC
AACAGCCTGGCTCAGCATGTGCGAATCCACACAGCCAGGCAGTGGTCAATGTTCCAGACAGACCGCGAC
TTCTATCAGCAGTATGGCCAGGTGGCAGTGGCCTGCCGGCAGGTGCTGCAGGCTGGGGAGCTGGTC
TTCCGCCCTCGCAGCGGGCTGAGGGCCAGCCGCACTGGCAGAGACCTCCCTACAGCTCCTGAATGT
CCCCCGCTGCCGAG
ACGCGTACGCGGCCGCTCGAG - GFP Tag - GTTTAAAC
  
```

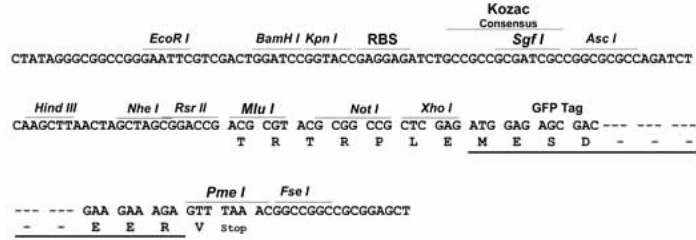
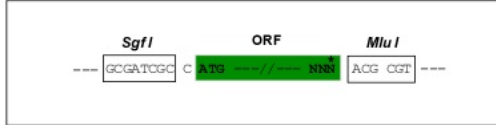
Protein Sequence: >Peptide sequence encoded by RG239613
Blue=ORF Red=Cloning site Green=Tag(s)

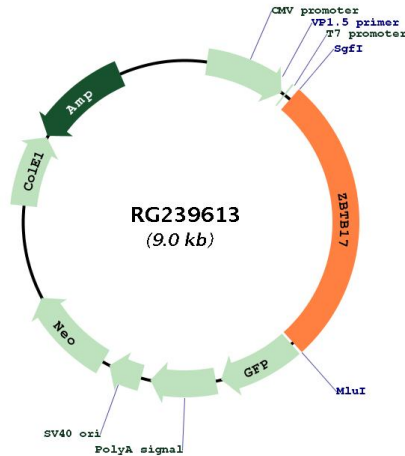
MDFFPQHSQHVLEQLNQQRQLGLLCDCTFVVDGVHFKAHKAVLAACSEYFKMLFVDQKDVVHLDISNAAG
LGQVLEFMYTAKLSLSPENVDDVLAVATFLQMQDIITACHALKSLAEPATSPGGNAEALATEGGDKRAK
EEKVATSTLSRLEQAGRSTPIGPSRDLEERGGQAQSAASGAEQTEKADAPREPPPVELKPDPTSGMAA
AEAEAALSESSEQEMEVEPARKGEEEEQKEEQEEEGAGPAEVKEEGSQLENGEAPEENENEEESAGTDS
GQELGSEARGLRSGTYGDRTESKAYGSVIHKCEDCGKEFTHTGNFKRHIRIHTGEKPFSCRECSKAFSD
PAACKAHEKTHSPLKPYGCEECGKSYRLISLLNLHKKRHSGEARYRCEDCGKLF T TSGNLKRHQLVHSG
EKPYQCDYGRSFSDPTSKMRHLETHDTHDKEHKCPHCDKKNQVGNLKAHLKIHAIADGPLKCRECGKQF
T TSGNLKRHLRIHSGEKPYVCIHCQRQFADPGALQRHVR IHTGEKPCQCVMCGKAFTQASSLIAHVRQH
TGEKPYVCERCGRFVQSSQLANHIRHHDNIRPHKCSVCSKAFVNVGDL SKHII IHTGEKPYL CDKCGR
GFNRVDNLRSHVKT VHQKAGIKILEPEEGSEVS VVTVDDMVT LATEALAAATAVTQLTGPATLPAVVPV
GAAVTADETEVLKAEISKAVKQVQEEDPNTHILYACDSCGDKFLDANSLAQHVR IHTAQALVMFQTDAD
FYQQYGPGGTWPAGQVLQAGELVFRPRDGAEGQPALAETSPTAPECPPPAE
TRTRPLEMESDESGLPAMEIECRITGTLNGVEFELVGGGEGTPEQGRMTNKMKSTKGALTFSPYLLSHV
MGYGFYHFGTYP SGYENPFLHAINNGGYTNRIEKYEDGGVLHVSFSYRYEAGRVI GDFKVMGTGFPEP
SVIFTDKIIIRSNATVEHLHPMGDNDLDGSFTRTFSLRDGGYSSVVDSHMHFKSAIHPSILQNGGPMFA
FRRVEEDHSNTELGIVEYQHAFKTPDADAGEERV

Restriction Sites: Sgfl-Mlul

Cloning Scheme:

Cloning sites used for ORF Shutting:



Plasmid Map:


ACCN:	NM_001287603
ORF Size:	2430 bp
OTI Disclaimer:	The molecular sequence of this clone aligns with the gene accession number as a point of reference only. However, individual transcript sequences of the same gene can differ through naturally occurring variations (e.g. polymorphisms), each with its own valid existence. This clone is substantially in agreement with the reference, but a complete review of all prevailing variants is recommended prior to use. More info
OTI Annotation:	This clone was engineered to express the complete ORF with an expression tag. Expression varies depending on the nature of the gene.
Components:	The ORF clone is ion-exchange column purified and shipped in a 2D barcoded Matrix tube containing 10ug of transfection-ready, dried plasmid DNA (reconstitute with 100 ul of water).
RefSeq:	NM_001287603.1 , NP_001274532.1
RefSeq Size:	2788 bp
RefSeq ORF:	2433 bp
Locus ID:	7709
UniProt ID:	Q13105
Cytogenetics:	1p36.13
Protein Families:	Transcription Factors
Protein Pathways:	Cell cycle
MW:	89 kDa

Gene Summary:

This gene encodes a zinc finger protein involved in the regulation of c-myc. The symbol MIZ1 has also been associated with PIAS2 which is a different gene located on chromosome 18. [provided by RefSeq, Jul 2008]