

Product datasheet for **RG239596**

MAP7D1 (NM_001286365) Human Tagged ORF Clone

Product data:

Product Type:	Expression Plasmids
Product Name:	MAP7D1 (NM_001286365) Human Tagged ORF Clone
Tag:	TurboGFP
Symbol:	MAP7D1
Synonyms:	PARCC1; RPRC1
Mammalian Cell Selection:	Neomycin
Vector:	pCMV6-AC-GFP (PS100010)
E. coli Selection:	Ampicillin (100 ug/mL)



[View online »](#)

ORF Nucleotide Sequence:

>RG239596 representing NM_001286365.
 Blue=ORF Red=Cloning site Green=Tag(s)

```

GCTCGTTTAGTGAACCGTCAGAATTTTGTAAACGACTCACTATAGGGCGGCCGGGAATTCGTGACTG
GATCCGGTACCGAGGAGATCTGCCGCCCGCATCGCC
ATGGAGAGCGGCCCGGTGCGGAGCTGGGGCGGGCGCACCCCCAGCTGTGGTCGCCAGGACCCCCCA
GAGCCAAGACCTTCTCCAGAAGGTGACCTTCCCCCCCACCACCACCAATGTCAGCCTGGTCCCGGAC
ACTCCCCCGGACACCCCTCCTGCCATGAAGAATGCCACTAGCTCTAAGCAGCTCCCACTGGAACAGAG
AGCCCCCTCAGGGCAGGTGCGGCCTAGGCCAGCCCCCGCAGGAAGAGTCCCCTTCTCTGAAGCAAAG
AGCAGAGGACCCACCCACCAGCCATGGGCCACGGGATGCCAGACTCCTCGAAGGAGCAGCCAGCCA
TCTCCAACAGCAGTGCCAGCCTCCGACAGCCCTCCACCAAGCAAGAGGTGAAGAAGGCAGGAGAGAGA
CACAAGCTGGCAAAGGAGCGGCGAGAAGAGCGGGCAAGTACCTGGCGGCAAGAAGGCAGTGTGGCTG
GAGAAGGAGGAGAAGGCCAAGGCCTGCGGGAGAAGCAGCTCCAGGAGCGCCGGCGCCGGCTGGAGGAG
CAACGTCTTAAAGCCGAGCAACGCCGTGACGCCCTGGAGGAACGGCAGCGGCAGAAGCTCGAAAAAAC
AAGGAGCGCTATGAAGCAGCCATCCAACGGTCAGTGAAGAAGACGTGGGCCGAAATCCGGCAGCAGCGC
TGGTCCTGGGCAGGGGCCCTGCACCACAGCTCTCCAGGACATAAGACCAATCGCAGCCTGCAGCTGAGC
GCATGGGAGAGCAGCATCGTGGATCGTCTGATGACGCCCACTCTCTCTTCTTGTCTGGAGTCGAGC
GCGGTCACTGCCCCGAACGGCCGGGACCAGGGTAGGGGTGCGACCTGGGAGAGGCCCCACGTGG
GGCCGGGCGAGGGCCAGCCTGGCGCGGGGCCGAACCCGACCGCACTCATCCCTTGCAGCCGTGCCG
GTGTGCCCGCGCTCGGCCTCCGCCAGCCCCCTGACGCCGTGACAGCGTCACCCGAAGCGTGCACCGCTGC
GCCCCCGCGGTGAGCGCGGGGAGCGCCGAAGCCCAACGCCGGGGCAGCCCCGCTCCGGTGCGCCGC
CGGCCGAGGCCCTCGCCGGTGCAGAAAAAGGAGAAGAAGGACAAGGAGCGGGAAAAACGAGAAGGAGAAG
AGTGCCTAGCCCGGAGCGCAGCCTCAAGAAGCGCCAGTGCCTGCCCGCCTCCCAAGTGCCTCCCTC
TCTGCCAGCACCCCTCTGAGCTCAGCCCCAAATCCAAGGCCAGGCCATCCTCTCCCTCCACATCCTGG
CACAGGCCTGCCTCCCCCTGCCCCAGCCAGGGCCAGGCCACACTCTGCCTCCAAAGCCACCGTCCCCC
CGAGGCACCACTGCATCCCCAAGGGCGGGTTCGGAGGAAGGAGGAGGCAAAGGAGAGCCCCAGCGCC
GCAGGGCCCGAGGACAAGAGCCAGAGCAAGCGCAGGGCCAGTAACGAGAAGGAGTCAGCAGCCCCAGCC
TCACCGGCACCTTCGCCGGCGCCCTCGCCACCCAGCCCCGCCCCAGAAGGAGCAGCCCCCGCGGAG
ACCCCTACAGACGCTGCTGTCTTGACCTACCCCCAGCCCCTGCTCCCCCGGTGACCCCTAGCAAACCA
ATGGCCGGCACACAGACCGAGAAGAAGCCACTCGGCTCTTGGCTGAGAAGCGGCCCCAGGCCCGGGAG
CAGCGGGAGCGCAGGAGCAGGAGCGGAGGCTGCAGGCAGAAAGGACAAGCGAATGCGAGAGGAGCAG
CTGGCACGGGAGGCCGAGGCCCGGGCGGAGCGGAGGCGGAGGCCCGGAGCGGGAGGAGCAGGAGGCA
CGAGAGAAGGCGCAGGCCGAGCAGGAGGAGCAGGAGCGGCTGCAGAAGCAGAAAGAGGAGGCCGAAGCT
CGGTGCGGGGAAGAGGCGGAGCGGCAGCGTCTGGAGCGGGAAAAGCACTTCCAGCAGCAGGAGCAAGAG
CGGCAAGAGCGCAGAAAGCGTCTGGAGGAGATCATGAAGAGGACTCGGAAGTCAGAAGTTTCTGAAACC
AAGAAGCAGGACAGCAAGGAGGCCAACGCCAACGGTTCAGCCCAGAGCCTGTGAAAGCTGTGGAGGCT
CGGTCCCCAGGGCTGCAGAAGGAGGCTGTGCAGAAAGAGGAGCCCATCCACAGGAGCCTCAGTGGAGT
GCCTTCTCCACCAACGGACCCCTGCGGGACAAGAGTCTGAGCCGAACACCAGAGACTCCTGCCCTT
GCAGAGGCAGAAGCCTTCTCAAGAAAGCTGTGGTGCAGTCCCCGAGGTCACAGAAGTCCTT
ACGCGTACGCGGCCGCTCGAG – GFP Tag – GTTTAAAC
  
```

Protein Sequence: >Peptide sequence encoded by RG239596
 Blue=ORF Red=Cloning site Green=Tag(s)

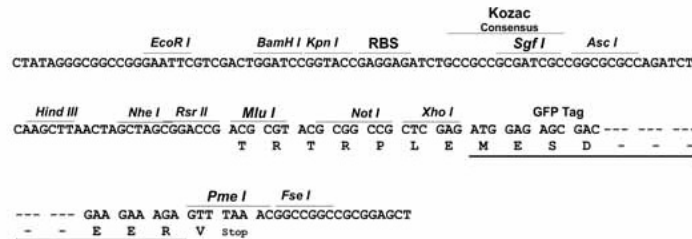
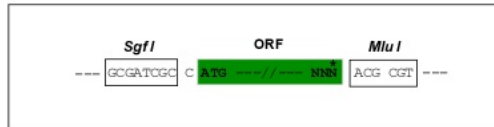
```

MESGPRAELGAGAPPAVVARTPPEPRPSPEGDPSPPPPPMSALVPDTPPDTTPAMKNATSSKQLPEPE
SPSGQVGPRPAPPQEEPSSEAKSRGPTPPAMGPRDARPPRRSSQPSTAVPASDSPPTKQEVKKAGER
HKLAKERREERAKYLAACKAVWLEKEEKAKALREKQLQERRRRLEEQLKAEQRRRAALEERQKLEKN
KERYEAAIQRSVKKTWAEIRQQRWSWAGALHHSSPGHKTNRSLLSAWESSIVDRLMPTLSFLARSRS
AVTLPRNGRDQGRGCDPGRGPTWGRAGASLARGPQDRTHPSAAVPVCPRSASASPLTPCSVTRSVHRC
APAGERGERRKPNAGGSPAPVRRRPEASPVQKKEKKDKERENEKEKSALARERSLKKRQSLPASPRARL
SASTASELSPKSKARPSSPSTSWHRPASPCSPGPGHTLPPKPPSPRGTTASPKGRVRRKEEAKESPSA
AGPEDKSQSKRRASNEKESAAPASPAPSPAPSPTAPPQKEQPPAETPTDAAVLTSPAPAPPVTPSKP
MAGTTDREEATRLLAEKRRQAREQREEREEQERRLQAERDKRMREEQLAREAEARAEREAEARRREEQEA
REKAQAEQEEQERLQKQKEEAEARSREEAERQRLEREKHFQQEQERQERRKLEEIMKRTRKSEVSET
KKQDSKEANANGSSPEPVKAVEARSPGLQKEAVQKEEPIPQEPQWLSLPSKELPASLVNGLQPLPAHQEN
GFSTNGPSGDKLSRTPETLLPFAEAEAFLLKAVVQSPQVTEVL
TRTRPLEMESDESGLPAMEIECRITGTLNGVEFELVGGGEGTPEQGRMTNKMSTKGALTFSPYLLSHV
MGYGFYHFGTYPSGYENPFLHAINNGGYTNRIEKYEDGGVLHVSFSYRYEAGRVIGDFKVMGTGFPEP
SVIFTDKIIIRSNAIVEHLHPMGDNDLDGSFTRTFSLRDGGYSSVVDSMHFKSAIHPSILQNGGPMFA
FRRVEEDHSNTELGIVEYQHAFKTPDADAGEERV
  
```

Restriction Sites: Sgfl-Mlul

Cloning Scheme:

Cloning sites used for ORF Shutting:



ACCN: NM_001286365

ORF Size: 2409 bp

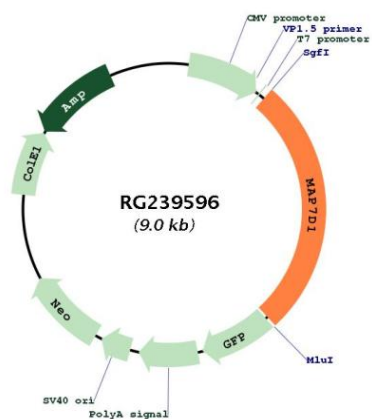
OTI Disclaimer: The molecular sequence of this clone aligns with the gene accession number as a point of reference only. However, individual transcript sequences of the same gene can differ through naturally occurring variations (e.g. polymorphisms), each with its own valid existence. This clone is substantially in agreement with the reference, but a complete review of all prevailing variants is recommended prior to use. [More info](#)

OTI Annotation: This clone was engineered to express the complete ORF with an expression tag. Expression varies depending on the nature of the gene.

Components: The ORF clone is ion-exchange column purified and shipped in a 2D barcoded Matrix tube containing 10ug of transfection-ready, dried plasmid DNA (reconstitute with 100 ul of water).

RefSeq: [NM_001286365.2](#)
 RefSeq Size: 3473 bp
 RefSeq ORF: 2412 bp
 Locus ID: 55700
 UniProt ID: [Q3KQU3](#)
 Cytogenetics: 1p34.3
 MW: 89.2 kDa

Product images:



Circular map for RG239596