

## Product datasheet for **RG239592**

### **RNF190 (MARCH10) (NM\_001288780) Human Tagged ORF Clone**

#### **Product data:**

Product Type:	Expression Plasmids
Product Name:	RNF190 (MARCH10) (NM_001288780) Human Tagged ORF Clone
Tag:	TurboGFP
Symbol:	RNF190
Synonyms:	MARCH-X; MARCH10; RNF190
Mammalian Cell Selection:	Neomycin
Vector:	pCMV6-AC-GFP (PS100010)
E. coli Selection:	Ampicillin (100 ug/mL)



[View online »](#)

**ORF Nucleotide Sequence:**

>RG239592 representing NM\_001288780.  
 Blue=ORF Red=Cloning site Green=Tag(s)

```

GCTCGTTTAGTGAACCGTCAGAATTTTGTAAACGACTCACTATAGGGCGGCCGGGAATTCGTGACTG
GATCCGGTACCGAGGAGATCTGCCGCCACGATCGCC
ATGTTGCATGACGCAAGGGACAGGCAGAAGTTCTTCAGCGATGTTCAAGTATCTCGGGACATGCAGCAT
AAGGTGGACTCTGAGATCAGGCTTGCTGAGACGACAGGAATATAGAAGAGACCCAAATGAGAAGAAA
CGCGATCAGTTTTGGGGCAAGAGACAAGTTTTGAGAGATCCCGTTTTCTAGCAGGTCACTTCCAAA
CAGAGTCTAGTGAGGAGGATGCTCTAACTGAACCAAGGTCATCTATCAAGATATCTGCATTTAAGTGT
GACTCCAAACTTCCAGCAATTGACCAAACATCAGTCAAGCAGAAACATAAAAGTACCATGACTGTAAGG
AAAGCAGAGAAAGTGGACCCAGCGAACCTCTCCAGACCAAGCACCAATGGTTTTATTAAGAAAGAGG
AAGCCAAACTGAGGAGATTTACAGTCAGCCAGAATCGCACAGCCGAGAGCATCTGGGGACAGAAGC
AGACAGAAACAGCAGTGGCCTGCAAAGGTGCCGGTCCCAGGGGAGCAGATCAAGTAGTTCAACAAGAA
GGCCTGATGTGTAACTAAGCTGAAGAGGCCAAATCAAGAGAGAAGAACTTGGTCCCATCGTCACAG
CCAATGACTGAGAACGCCCTGATAGAGCCAAAAAGGAGACCCGAGTGCCTTCCCAGAGTGAGCTG
CATCCAGCCCTGCCAGGCCTTCCAAGGAAAAATAGTCTCAAGTATTGAGTAGTTCCTCGGGGCCA
CCTCACACCCACCCTGTAGGAGGGCCAAGAAAGGCATCATTTAGGTTCCGAGATGAAGACTTTTAT
TCCATTTTGTCAATGAACAGCAGAAGAGAAAGCGATGACACTGAAGAGGAAACCCAGTCTGAAGAATGT
CTGTGGTTGGTGTGCGCTCACCTGTTCTCTTCCCATCACAAAAGAAGTAGATTTGGGGGACATCG
ACCCCTCAGGCCAAAAATAAAATTTTGAAGAAAATGCTGAAAATTGCAGAGGTCATTCTTCAAGAAGA
AGTGAGCCAGTCATGGCTCATTGAAATAAGCAATGCAATGGAGCCAGCAACAGAGCGGCCCTTCTGCT
GGGCAAAGGTTGTCCCAAGACCCCGGGCTGCCTGATAGGGAATCTGCTACAGAGAAGGACAGAGGTGGC
AGTGAAAATGCGAAAAGAGCCCTCTTTCGTGGACACCAAATCCGAGCCAGACAAGAGGTTGGTGC
AATGCTGAAAATGTATGGAGTGATTGTATTTCTGTGGAACATAGGCCTGGCACCCATGATCTGAAGGA
TACTGAAAAGACTATTTAAACAGTTCTCAAATTTCTTGTACTACTTTATTTCTGGCAGACCAATATCT
CCAAGATCATCAGTGAATTCATCTATAACCTCCTGCATCATTGATGCTTCTGCTCTGAGAGATGAT
ATTCCAGTAGACTTGCAATGTCATCGACTTCAGTTCACAGCTCAGACTCAGAGGGAAACTCAGGGTTT
CATGTTTGCCAACCACTGTCTCCATTAGAAATAGGACTCCATTTGCCAGTGCCGAAAACCATAAATAT
TTCCAGTAAACAGTGACACGAATTTGCTGTGAGGGAAGCAGAAGATACTACTTTAACAAGCCAGCCT
CAGGGGGCTCCACTATATACAGATCTTACTAAATCCACAGGGCAATTTGTCTTAGTGGATTCTTCC
AGCTCCTCTCCATCAAGAATGAACTCAGAAGGCCATTTGCATGTGTCTGGTCTCTGCAAGAAAATACA
CCATTTACTTTCTTTCAGTGTCTCATTCCCAAATCAAATGATAATGGGAGCAGGATGGCAGCCTCT
GGTTTCACAGATGAAAAGGAAACCAGTAAGATAAAGGCAGACCCTGAGAACTCAAGAAATTGCAAGAA
AGTCTCCTGGAGGAGGACTCCGAGGAGGAGGGAGACTTGTGTCGCATCTGTGAGATAGCCGGGGTTCC
CCAAGCAACCCCTCCTGGAGCCTTGGCGCTGTGTGGGAAGCCTGCAGTTTGTTCATCAAGAGTGCCCTG
AAAAAGTGGCTGAAAGTGAATAACATCAGGAGCAGATCTTGGTGCCGTGAAGACCTGTGAGATGTGT
AAGCAAGGCTGCTGGTTGACCTGGGTGACTTTAATGATTGAGTTCTACCAGAAGCACCAGCAATCT
CAGGCACAAAACGAGCTGATGAATTCAGGCTTGTACCTGGTGTGCTGCTTACCTCTATGAGCAGAGG
TTTGAGAACTCATGAGGCTCAACCACAACCCAGGTGAAAGAGAGAGGTTGTCAAGAAATTACCCACAA
CCAGAACAGAGGAAAATGAAAGTAGGTTTTGGGGCCAGTCTGCCATTT
ACGCGTACGCGGCCGCTCGAG – GFP Tag – GTTTAAAC
  
```

**Protein Sequence:**

>Peptide sequence encoded by RG239592  
 Blue=ORF Red=Cloning site Green=Tag(s)

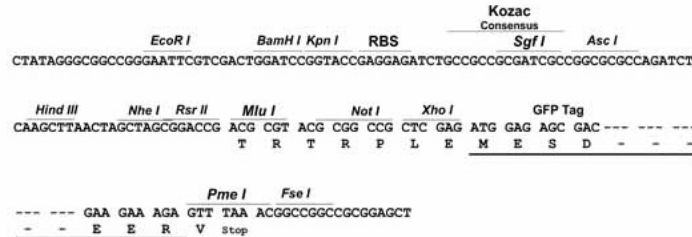
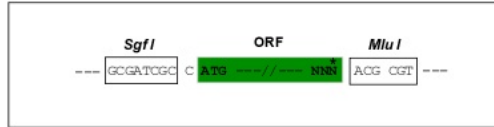
MLHDARDRQKFFSDVQYLQDMQHKVDSEYQAQLRRQEYRRDPNEKKRDQFWGQETSFERSRFSSRSSK  
 QSSSEEDALTEPRSSIKISAFKCDKSLPAIDQTSVKQKHKSTMTVRKAEKVDPSESPDQAPMVLLRKR  
 KPNLRRFTVSPESHSPRASGDRSRQKQWPAAKVPVPRGADQVVQQEGLMCNTKLRPNQERRNLVPSSQ  
 PMTENAPDRAKKGDPAPSQSELHPALSAFQGKNPQVLEFSGPPLTPTTVGGPRKASFRFRDEDFY  
 SILSLNSRRESDDTEETQSEELWVGVRSPCSPSHHKRSRFGGTSTPQAKNKNFEENAENCRGHSSRR  
 SEPSHGSLRISNAMEPATERPSAGQRLSQDPGLPDRESATEKDRGGSENAkkSPLSWDTKSEPRQEVGV  
 NAENVWSDCISVEHRPGTHDSEGYWKDYLNSSQNLDYFISGRPISPRSSVNSSYNPPASFMHSALRDD  
 IPVDLMSSTSVHSSDSEGNSGFHVQCPLSPIRNRTPFASAENHNYFPVNSAHEFAVREAEDTTLTSQP  
 QGAPLYTDLLNPQGNLSLVDSSSSPSRMNSEGHLHVSGSLQENTPFTFFAVSHFPNQNDNGSRMAAS  
 GFTDEKETSNIKADPELKKLQESLLEEDSEEGDLCRICQIAGGSPSNLLEPCGCVGSLQFVHQECL  
 KKWLKVKITSGADLGAVKTCMCKQGLLVDLGDFNMIIFYQKHQSQAQNELMNSGLYLVLHLHLVEQR  
 FAELMRLNHNQVERERLSRNYQPRTTEENSRFWGPVLPF  
**TRTRPLEMESDESGLPAMEIECRITGTLNGVEFELVGGGEGTPEQGRMTNKMSTKGALTFSPYLLSHV**  
**MGYGFYHFGTYPSTYENPFLHAINNGGYTNRIEKYEDGGVLHVSFSYRYEAGRVIQDFKVMGTGFPED**  
**SVIFTDKIIIRSNAIVEHLHPMGDNDLDGSFTRTFSLRDGGYSSVVDSMHFKSAIHPISILQNGGPMFA**  
**FRRVEEDHSNTELGIVEYQHAFKTPDADAGEERV**

**Restriction Sites:**

Sgfl-MluI

**Cloning Scheme:**

Cloning sites used for ORF Shutting:

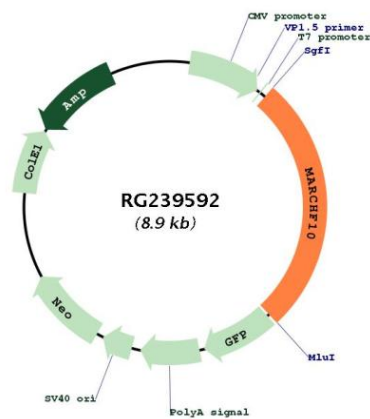


- ACCN:** NM\_001288780
- ORF Size:** 2397 bp
- OTI Disclaimer:** The molecular sequence of this clone aligns with the gene accession number as a point of reference only. However, individual transcript sequences of the same gene can differ through naturally occurring variations (e.g. polymorphisms), each with its own valid existence. This clone is substantially in agreement with the reference, but a complete review of all prevailing variants is recommended prior to use. [More info](#)
- OTI Annotation:** This clone was engineered to express the complete ORF with an expression tag. Expression varies depending on the nature of the gene.
- Components:** The ORF clone is ion-exchange column purified and shipped in a 2D barcoded Matrix tube containing 10ug of transfection-ready, dried plasmid DNA (reconstitute with 100 ul of water).

RefSeq: [NM\\_001288780.2](#)  
 RefSeq Size: 3476 bp  
 RefSeq ORF: 2400 bp  
 Locus ID: 162333  
 UniProt ID: [Q8NA82](#)  
 Cytogenetics: 17q23.2  
 MW: 90.3 kDa

**Gene Summary:** MARCH10 is a member of the MARCH family of membrane-bound E3 ubiquitin ligases (EC 6.3.2.19). MARCH enzymes add ubiquitin (see MIM 191339) to target lysines in substrate proteins, thereby signaling their vesicular transport between membrane compartments (Morokuma et al., 2007 [PubMed 17604280]).[supplied by OMIM, Apr 2010]

### Product images:



Circular map for RG239592