

## Product datasheet for **RG239591**

### ZNF227 (NM\_001289166) Human Tagged ORF Clone

#### Product data:

Product Type:	Expression Plasmids
Product Name:	ZNF227 (NM_001289166) Human Tagged ORF Clone
Tag:	TurboGFP
Symbol:	ZNF227
Mammalian Cell Selection:	Neomycin
Vector:	pCMV6-AC-GFP (PS100010)
E. coli Selection:	Ampicillin (100 ug/mL)



[View online »](#)

ORF Nucleotide  
Sequence:

>RG239591 representing NM\_001289166.  
Blue=ORF Red=Cloning site Green=Tag(s)

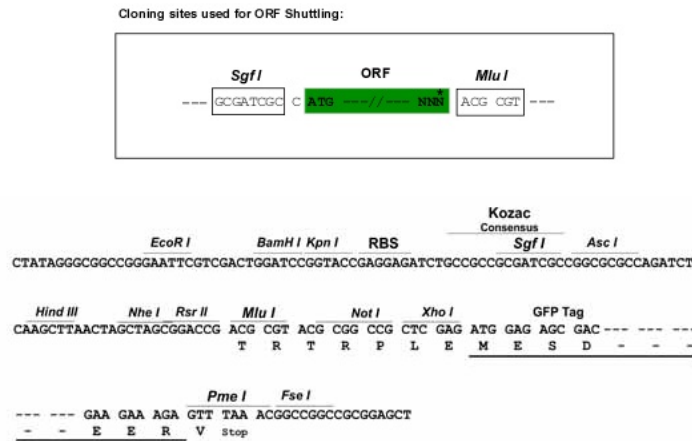
```
GCTCGTTTAGTGAACCGTCAGAATTTTGTAAACGACTCACTATAGGGCGGCCGGGAATTCGTGCGACTG
GATCCGGTACCGAGGAGATCTGCCGCCCGCATCGCC
ATGCCATCTCAGAACTATGACCTTCCCCAGAAGAAGCAGGAGAAAATGACCAAGTTTCAGGAGGCTGTG
ACATTC AAGGATGTGGCTGTGGTCTTCCAGGGAGGAACTGCGACTGCTCGATCTTACCCAGAGGAAG
CTGTACCGAGATGTCATGGTGGAGAACTTCAAGAACCTGGTTGCAGTGGGGCATCTTCCCTTCCAACCA
GATATGGTATCCCAATTGGAAGCAGAAGAAAAGCTTTGGATGATGAAACAGAAACCCAAAGAAGCAGC
AAGCATCAAAAATAAGATGGAACACTCCAAAAATTTGCATTAAAAACCTTTCAAATCAAGAGCTGTCC
TGCTGGCAAACTCGGAAACAGGTTGCAAGTGAATTAACCAGGTGTCTTCAGGGGAAGAGTCCCAGTTA
TTACAAGTGACTCTATTCAGGTTTCTGAAAATGAGAACAATAAATGAACCCTAAAGGAGATAGCTCT
ATTTATATTGAAAATCAAGAGTTTCCATTTTGGAGAACCAGCATTCTTGCGGGAATACATATCTGAGT
GAGTCACAGATTCAGAGTAGAGTAAGCAAATGTATGTGAAAAAATACCTGCAAAATACATGAAGACTTC
ATGAAGAAATCACCATTTTCATGAGCATATTAAGAACTGACACAGAACCAAAACCTGCAAAGTAAATGAA
TATGGCAAAATCATTAGTGATGGCTCCAATCAGAAATTACCTTAGGAGAGAAACCCCATCCATGTGGT
GAGTGTGGAAGGGGCTTCAGTTATAGCCCAAGGCTTCCCCTTCATCCGAATGTTCATACAGGAGAAAAA
TGCTTCAGTCAAAGCTCACATCTGCGAACTCATCAGAGAAATCACCCAGGAGAGAAAACCTCAATAGATGT
CATGAATCTGGTATTGCTTCAATAAGAGCTCTTTTCATTCTTATCAATCTAATCATACAGGAGAGAAG
TCTTATAGATGCGACAGTTGCGGCAAGGGATTCAAGTAGCAGCACGGGTCTTATCATTATTACAGAACT
CATACTGGAGAGAAAACCTATAAATGCGAGGAATGTGGTAAATGCTTTAGTCAAAGTTCAAATTTTCAG
TGCCATCAGAGAGTCCACACTGAAGAAAAACCATACAAATGCGAAGAGTGTGGTAAGGGCTTCGGTTGG
AGTGTAAATCTCCGTGTTCCACAGAGGGTCCACAGGGGTGAGAAGCCCTATAAATGTGAGGAATGGT
AAGGGCTTCACTCAGGCTGCACATTTTCCATCCATCAGAGAGTCCACACTGGAGAGAAAACCTACAAG
TGTGATGTGTGGTAAGGGCTTCAGCCACAATTCACCATTAATATGCCATCGGAGAGTCCACACAGGA
GAGAAGCCATACAAGTGTGAGGCGTGTGGGAAAGGCTTTACCCGTAATACAGATCTGCATATTCATTTT
AGAGTTCACACGGGAGAGAAAACCTATAAATGTAAGGAGTGTGGTAAGGGCTTCAGTCAAGCTTCAAAT
CTTCAAGTCCATCAGAAATGTCCACACTGGGAGAAAACGATTCAAGTGTGAAACGTGTGGGAAAGGCTTC
AGTCAGTCTCAAAGCTTCAAACCCATCAGCGAGTCCACACTGGAGAGAAAACCATATAGATGTGATGTG
TGTGGTAAGGACTTCAGTTATAGTTCAAATCTTAACTACACCAAGTAATTCACACTGGAGAAAAACCA
TATAAATGTGAGGAATGTGGGAAAGGCTTCAGTTGGAGATCAAATCTTCATGCACATCAAAGAGTTCAC
TCAGGAGAAAAACCTATAAATGTGAGCAGTGTGATAAGAGCTTCAGTCAGGCCATAGATTTTCGGGTA
CATCAGAGAGTCCATACTGGAGAGAAGCCATACAAATGTGGTGTCTGTGGTAAGGGCTTCAGTCAGTCC
TCTGGTCTTCAATCCCATCAGAGAGTCCACACGGGGGAAAAGCCATACAAATGTGATGTGTGGAAAG
GGCTTTAGATACAGTTTCGAGTTTATATACCATCAGAGAGGCCACACTGGAGAAAACCTTACAAATGT
GAAGAGTGTGGGAAAGGCTTTGGTAGGAGCTTGAATCTTCGCCATCATCAGAGGGTCCACACGGGAGAG
AAACCCCATATATGTGAGGAGTGTGGTAAGGCCTTCAGTCTCCCCTCAAATCTTCGAGTCCACCTGGGT
GTTACACACAGGAAAAACTCTTAAATGTGAAGAGTGTGGTAAGGCCTTCAGTCAGAGTGCACGTCTT
GAAGCCCATCAGAGAGTCCACACTGGAGAAAAACCATACAAATGTGACATATGTGATAAGGACTTCGGT
CACCGTTCACGTCTTACATATCATCAGAAAGTCCATACTGGTAAAAAGCTT
ACGCGTACGCGGCCGCTCGAG - GFP Tag - GTTAAAC
```

**Protein Sequence:** >Peptide sequence encoded by RG239591  
 Blue=ORF Red=Cloning site Green=Tag(s)

MPSQNYDLPQKKQEKMTKFQEA VTFKDVAVVFSREELRLDLTQRKLYRDMVENFNKLVAVGHLPFQP  
 DMVSQLAEAEKLMWME TETQRSSKHQNKMETLQKFALKYLSNQELSCWQIWKQVASELTRCLQKSSQL  
 LQGD SIQVSENENNIMNPKG DSSIYIENQEF PFWRTQHSCGNTYLS ESQIQSRGKQIDVKNNLQIHEDF  
 MKKSPFHEHIKTDTEPKPCKGNEYGKIISDGSNQKLP LGEKPHPCGECGRGF SYSPRLPLHPNVHTGEK  
 CFSQSSHLRTHQRIHPGKLNRCHESGDCFNKSSFHSYQSNHTGEKSYRCDSCGKGFSSSTGLI IHYRT  
 HTGEKPYKCEECGKCFSSSNFQCHQRVHTEEKPYKCEECGKGFWSVNLRVHQRVHRGEKPYKCEECG  
 KGFTQAAHFHIIHQRVHTGEKPYKCDVCGKGF SHNSPLICHRRVHTGEKPYKCEACGKGFTRNDLHIHF  
 RVHTGEKPYKCECGKGF SQASNLQVHQNVHTGEKRFK CETCGKGFSSSKLQTHQRVHTGEKPYRCDV  
 CGKDFSYSSNLKLHQVIHTGEKPYKCEECGKGF SWRSNLHAHQRVHSGEKPYKCEQCDKSFSAIDFRV  
 HQRVHTGEKPYKCGVCGKGF SQSSGLQSHQRVHTGEKPYKCDVCGKGF RYSSQFIYHQRGHTGEKPYK  
 EECGKGFGRSLNLRHHQRVHTGEKPHICEECGKAFSLPSNLRVHLGVHTREKLFKCEECGKGF SQSARL  
 EAHQRVHTGEKPYKCDICDKDFRHR SRLTYHQVHTGKKL  
 TRTRPLEMESDESGLPAMEIECRITGTLNGVEFELVGGGGTPEQGRMTNKMSTKGALTFSPYLLSHV  
 MGYGFYHFGTYP SGYENPFLHAINNGGYNTRIEKYEDGGVLHVSFSYRYEAGRVIGDFKVMGTGFPE  
 SVIFTDKIIIRSNATVEHLHPMGDNDLDGSFTRTFSLRDGGYSSVVDSHMHFKSAIHPSILQNGGPMFA  
 FRRVEEDHSNTELGIVEYQHAFKTPDADAGEERV

**Restriction Sites:** SgfI-MluI

**Cloning Scheme:**

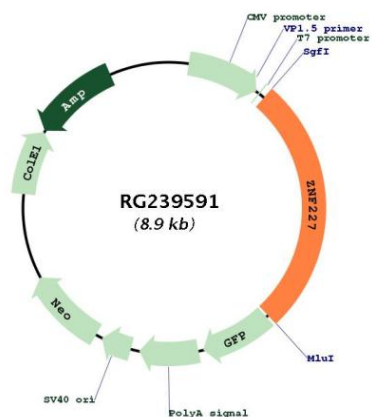


**ACCN:** NM\_001289166

**ORF Size:** 2397 bp

<b>OTI Disclaimer:</b>	<p>Due to the inherent nature of this plasmid, standard methods to replicate additional amounts of DNA in E. coli are highly likely to result in mutations and/or rearrangements. Therefore, OriGene does not guarantee the capability to replicate this plasmid DNA. Additional amounts of DNA can be purchased from OriGene with batch-specific, full-sequence verification at a reduced cost. Please contact our customer care team at <a href="mailto:custsupport@origene.com">custsupport@origene.com</a> or by calling 301.340.3188 option 3 for pricing and delivery.</p> <p>The molecular sequence of this clone aligns with the gene accession number as a point of reference only. However, individual transcript sequences of the same gene can differ through naturally occurring variations (e.g. polymorphisms), each with its own valid existence. This clone is substantially in agreement with the reference, but a complete review of all prevailing variants is recommended prior to use. <a href="#">More info</a></p>
<b>OTI Annotation:</b>	This clone was engineered to express the complete ORF with an expression tag. Expression varies depending on the nature of the gene.
<b>Components:</b>	The ORF clone is ion-exchange column purified and shipped in a 2D barcoded Matrix tube containing 10ug of transfection-ready, dried plasmid DNA (reconstitute with 100 ul of water).
<b>RefSeq:</b>	<a href="#">NM_001289166.1</a> , <a href="#">NP_001276095.1</a>
<b>RefSeq Size:</b>	3076 bp
<b>RefSeq ORF:</b>	2400 bp
<b>Locus ID:</b>	7770
<b>UniProt ID:</b>	<a href="#">Q86WZ6</a>
<b>Cytogenetics:</b>	19q13.31
<b>Protein Families:</b>	Transcription Factors
<b>MW:</b>	92.5 kDa
<b>Gene Summary:</b>	May be involved in transcriptional regulation.[UniProtKB/Swiss-Prot Function]

Product images:



Circular map for RG239591