

Product datasheet for **RG239585**

SPCA2 (ATP2C2) (NM_001291454) Human Tagged ORF Clone

Product data:

Product Type:	Expression Plasmids
Product Name:	SPCA2 (ATP2C2) (NM_001291454) Human Tagged ORF Clone
Tag:	TurboGFP
Symbol:	SPCA2
Synonyms:	SPCA2
Mammalian Cell Selection:	Neomycin
Vector:	pCMV6-AC-GFP (PS100010)
E. coli Selection:	Ampicillin (100 ug/mL)



[View online »](#)

ORF Nucleotide
Sequence:

>RG239585 representing NM_001291454.
Blue=ORF Red=Cloning site Green=Tag(s)

```
GCTCGTTTAGTGAACCGTCAGAATTTTGTAAACGACTCACTATAGGGCGGCCGGGAATTCGTGACTG
GATCCGGTACCGAGGAGATCTGCCGCCACGATCGCC
ATGAGGACGCCGTCAGCATCGCCACGGCAGTGCTTGTCTGTCGACTGTGCGCTTCATCCAGCCTAAGA
GAAGGAAAACTCCAGCACCTGCTTGTCTGAGAAGTGGTTCCTGGTGATGTCGATCTCTCTCGATCGGA
GACCGGATCCCTGCAGACATCCGACTCACTGAGGTCACGGACCTCTGGTGGATGAATCCAGTTTACC
GGGAAGCCGAGCCATGTAGTAAAAACAGACAGCCCTTGACAGGCGGTGGGGACCTACCACCCTCAGC
AACATCGTCTTCATGGGGACCCTGGTGCAGTATGGGAGGGGCCAGGGGTGCGTATTGGAACAGGGGAA
AGCTCTCAGTTCGGAGAAGTGTAAAGATGATGCAGGCTGAAGAGACACCTAAAACCTCTTTGCAGAAA
AGCATGGACAGGCTAGGAAAGCAACTGACACTCTTCTCCTTTGGCATAATCGGTCTCATCATGCTCATT
GGCTGGTCGAAGGAAACAACCTCTGAGTATGTTACAGTACGGGTGAGCTGGCTGTGGCGGCCATT
CCAGAGGGTCTGCCCATCGTCGTCATGGTGACGCTGGTCTGGGAGTGTGCGGATGGCCAAGAAGCGG
GTCATCGTGAAGAAGTTACCCATCGTGGAGACTTAGGTTGCTGCAGCTTCTGTCTGACAAGACG
GGACTCTGACTGCCAATGAAATGACAGTGACCCAGCTTGTAAACGTCAGATGGGCTTCGTGCCGAGGTC
AGCGGAGTTGGGTATGACGGTCAAGGGACTGTGTGCTTCTACCATCCAAGGAAGTCATTAAAGAAATTT
TCCAATGTCTCAGTGGGAAAGTTAGTGGAGGGGCTGTGTTGCCAACATGCGGTATCAGAAAAGAAC
GCCGTGATGGGGCAGCCACCGAGGGTGCATTGATGGCCCTGGCGATGAAGATGGACTTAAAGTATATT
AAAAATTCATATAAAGAAAAAAGAGATTCCATTCAGTTCAGAGCAGAAGTGGATGGCGGTGAAATGC
AGTCTGAAGACTGAGGATCAGGAAGACATTTACTTCATGAAAGGGGCTTGAAGAGGTGATCCGCTAC
TGCACCATGTACAACAACGGGGGCATCCCCCTGCCGCTGACGCCCAGCAGAGGTCATTCTGCCTGCAG
GAAGAGAAGAGGATGGGGTCGCTCGGTTTGCGGGTGCTGGCCCTGGCTTCTGGGCCGAGCTGGGGCGG
CTGACGTTTCTCGGTCTTGTGGGCATCATTGACCCCCGAGAGTTGGCGTGAAGGAAGCAGTCCAGGTT
CTCTCCGAGTCTGGTGTGCTGTGAAGATGATAACGGGGATGCCCTGGAGACGGCTTGGCCATAGGA
AGAAACATCGGCCTGTGCAACGGGAAGTGTCAAGCCATGTCCGGGGAGGAGGTGGACAGCGTGGAGAAG
GGCAGCTGGCCGACCGGTGGGAAGGTGTCCGTGTTCTTCAGGACCAGCCAAAGCACAAGCTCAAA
ATCATCAAGGCTCTGCAGGAGTCAAGGGCGATCGTGGCCATGACTGGGGATGGGGTGAACGACGCGAGTG
GCCCTGAAGTCTGCAGACATTGGGATCGCCATGGGGCAGACAGGGACGGACGTGAGCAAAGAGGCCGCC
AACATGATCCTGGTGGATGATGACTTCTCAGCCATCATGAATGCAGTGGAGGAAGGAAGGGTATTTTT
TACAACATCAAAAACCTTTGTCGATTCCAGCTGAGCACGAGCATCTCCGCCCTGAGTCTCATCACTCTG
TCCACCGTGTCAACCTGCCAGCCCCCTCAACGCCATGCAGATCCTATGGATCAACATCATCATGGAT
GGGCCACCGCGCAGAGCTTGGGGGTAGAGCCGTTGACAAAGACGCCTTCAGGCAGCCACCACGGAGT
GTGCGGGACACCATCCTCAGCAGAGCCCTCATCCTGAAGATCCTCATGTCCGCGGCCATCATCATCAGC
GGGACCCTCTTTATCTTCTGGAAGGAGATGCCTGAAGACAGAGCAAGCACTCCCCGACCCAGCAGATG
ACGTTCACTTGTGTTTTGTGTTTTTCGATCTTCAACGCCTTGACCTGCCGCTCTCAGACCAAGCTGATA
TTTGAGATCGGCTTTCTCAGGAACACATGTTCTCTACTCCGCTCCTGGGGTCCATCCTGGGGCAGCTG
GCGGTCAATTAACATCCCCCGCTGCAGAGGGTCTTCCAGACGGAGAACCTGGGAGCGCTTGATTTGCTG
TTTTTAACTGGATTGGCCTCATCCGCTTTCATTTTGTGAGAGCTCCTCAAACATATGTGAAAAATACTGT
TGCAGCCCCAAGAGAGTCCAGATGCACCCCTGAAGATGTG
ACGCGTACGCGGCCGCTCGAG - GFP Tag - GTTTAAAC
```

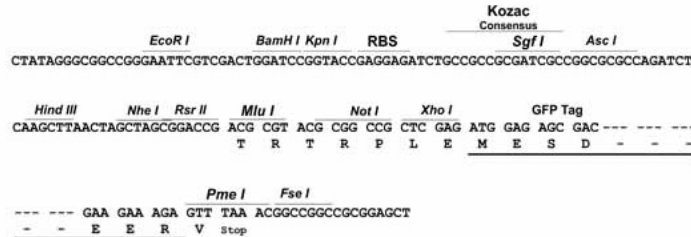
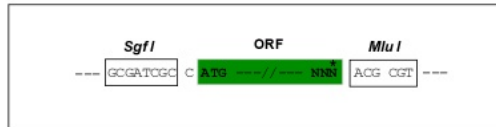
Protein Sequence: >Peptide sequence encoded by RG239585
Blue=ORF Red=Cloning site Green=Tag(s)

MRTPSASPRQCLSWSLSPSSSLREGKLQHLLARELVPGDVVLSIGDRIPADIRL TEVTDLLVDESSFT
GEAEPCSKTDSPLTGGGDLTTL SNIVFMGTLVQYGRGQGVVIGTESSQFGEVFKMMQAEETPKTPLQK
SMDRLGKQLTLFSFGIIGLIMLIGWSQGKQLLSMFTIGVSLAVAAIPEGLPIVVMVTLVLGVLMAKRR
VIVKKLPIVETLGCCSVLCSDKTGTLTANEMTVQLVTSGLRAEVSGVGYDGGQTVCLLPSKEVIKEF
SNVSVGKLV EAGCVANNAVIRKNAVGMQPTEGALMALAMKMDLSDIKNSYIRKKEIPFSSEQKWMVAVK
SLKTEDQEDIYFMKGALEEVIRYCTMYNNGGIPLPLTPQQRSFCLQEEKRMGSLGLRVLALASGPELGR
LTFGLVGIIDPPRVGVKEAVQVLSSEGSVYKMITGDALETALAIGRNIGLCNGKLQAMSGEEVDSVEK
GELADRVGKVSFFRTSPKHKLIIKALQESGAI VAMTGDGVNDAVALKSADIGIAMQTGTDVSKEAA
NMILVDDDFSAIMNAVEEGKGFYNIKNFVRFQLSTSISALSLITLSTVFNLPSPLNAMQILWINIIMD
GPPAQSLGVPEVDKDAFRQPPRSVRDTILSRALILKILMSAIIISGTLFIWKEMPEDRASTPRTTMM
TFTCFVFFDLFNALTCRSQTKLIFEIGFLRNHMFLYSVLGSLGQLAVIYIPPLQRFVQTENLGALDLL
FLTGLASSVFILSELLKLCEKYCCSPKRVQMHPEDV
RTRRPLEMESDESGLPAMEIECRITGTLNGVEFELVGGGEGTPEQGRMTNKMSTKGALTFSPYLLSHV
MGYGFYHFGTYPSTYENPFLHAINNGGYTNRIEKYEDGGVLHVSFSYRYEAGRVIGDFKVMGTGFPEP
SVIFTDKIIIRSNATVEHLHPMGDNDLDGSFTRTFSLRDGGYSSVVDSHMFKSAIHPSILQNGGPMFA
FRRVEEDHSNTELGIVEYQHAFKTPDADAGEERV

Restriction Sites: Sgfl-Mlul

Cloning Scheme:

Cloning sites used for ORF Shutting:



ACCN: NM_001291454

ORF Size: 2385 bp

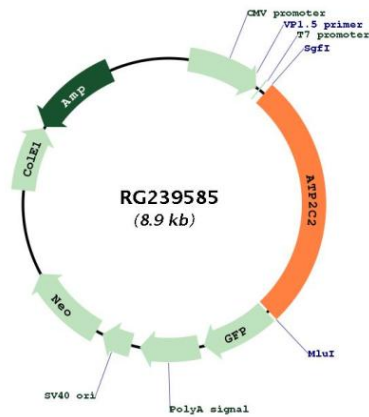
OTI Disclaimer: The molecular sequence of this clone aligns with the gene accession number as a point of reference only. However, individual transcript sequences of the same gene can differ through naturally occurring variations (e.g. polymorphisms), each with its own valid existence. This clone is substantially in agreement with the reference, but a complete review of all prevailing variants is recommended prior to use. [More info](#)

OTI Annotation: This clone was engineered to express the complete ORF with an expression tag. Expression varies depending on the nature of the gene.

Components: The ORF clone is ion-exchange column purified and shipped in a 2D barcoded Matrix tube containing 10ug of transfection-ready, dried plasmid DNA (reconstitute with 100 ul of water).

RefSeq: [NM_001291454.1](#), [NP_001278383.1](#)
 RefSeq Size: 2987 bp
 RefSeq ORF: 2388 bp
 Locus ID: 9914
 UniProt ID: [O75185](#)
 Cytogenetics: 16q24.1
 Protein Families: Druggable Genome, Transmembrane
 MW: 86.6 kDa
 Gene Summary: This magnesium-dependent enzyme catalyzes the hydrolysis of ATP coupled with the transport of calcium.[UniProtKB/Swiss-Prot Function]

Product images:



Circular map for RG239585