

Product datasheet for **RG239584**

ARHGAP6 (NM_001287242) Human Tagged ORF Clone

Product data:

Product Type:	Expression Plasmids
Product Name:	ARHGAP6 (NM_001287242) Human Tagged ORF Clone
Tag:	TurboGFP
Symbol:	ARHGAP6
Synonyms:	RHOGAP6; RHOGAPX-1
Mammalian Cell Selection:	Neomycin
Vector:	pCMV6-AC-GFP (PS100010)
E. coli Selection:	Ampicillin (100 ug/mL)



[View online »](#)

ORF Nucleotide Sequence:

>RG239584 representing NM_001287242.
 Blue=ORF Red=Cloning site Green=Tag(s)

```

GCTCGTTTAGTGAACCGTCAGAATTTTGTAAACGACTCACTATAGGGCGGCCGGGAATTCGTGACTG
GATCCGGTACCGAGGAGATCTGCCGCCACGATCGCC
ATGGGGCACCCGGTGTACCGCGGCGAGAAGCCCCAGCTGCACTACGCGGGTGATTTACCTGGAACAGC
ATGTCAGGCCCGCAGTGTACGGTGTAGGTCAGTCCCCTCCAGAGTCTCTCAGAGCTGGAGAGGGCCCGG
CTGCAGGAAGTGGCTTTTATCAGTTGCAACAGGACTGTGACCTGAGCTGTCAGATCACCATTTCCAAA
GATGGACAAAAGAGAAAAGAAATCTTTAAGAAAAGAACTGGATTCACTAGGAAAGGAGAAAAACAAGAC
AAAGAATTCATCCACAGGCATTTGGAATGCCCTTATCCCAAGTCATTGCGAATGACAGGGCCTATAAA
CTCAAGCAGGACTTGAGAGGGACGAGCAGAAAGATGCATCTGACTTTGTGGCTTCCCTCTCCATTT
GGAAATAAAGACAAAACAAGAAGCTCTCAAGCAGTAACATCTCTCAGCTCAACCTCAGAAACACCG
AATGAGTCAACGTCCCCAACCCCGGAACCGGCTCCTCGGGCTAGGAGGAGGGGTGCCATGTCAGTG
GATTCTATCACCGATCTTGATGACAATCAGTCTCGACTACTAGAAGCTTTACAACTTTCTTGCCTGCT
GAGGCTCAAAGTAAAAAGGAAAAAGCCAGAGATAAGAACTCAGTCTGAATCCTATTTACAGACAGGTC
CCTAGGCTGGTGGACAGCTGCTGTCAGCACCTAGAAAAACATGGCCTCCAGACAGTGGGGATATCCGA
GTTGGAAGCTCAAAAAGAGAGTGAGACAATTACGTGAGGAATTTGACCGTGGGATTGATGTCTCTCTG
GAGGAGGAGCACAGTGTTTATGATGTGGCAGCCTTGTGAAAGAGTTTCTGAGGGACATGCCAGACCCC
CTTCTCACCGAGGAGCTGTACACAGCTTTCATCAACACTCTTGTGAGCCGGAGGAACAGCTGGGC
ACCTTGCAGCTCCTCATATACCTTCTACCTCCCTGCAACTGCGACACCCTCCACCGCCTGCTACAGTTT
CTCTCCATCGTGGCCAGGCATGCCGATGACAACATCAGCAAAGATGGGCAAGAGGTCAGTGGGAATAAA
ATGACATCTCTAACTTAGCCACCATATTTGGACCAACCTGCTGCACAAGCAGAAGTCATCAGACAAA
GAATTCTCAGTTCAGAGTTCAGCCCGGGCTGAGGAGAGCAGGCCATCATCGTGTGTGCAAAAAGATG
ATTGAAAATTATGAAGCCCTGTTTATGTTTCCCCAGATCTCCAGAACGAAGTGTGATCAGCCTGTTA
GAGACCGATCCTGATGTCGTGGACTATTTACTCAGAAGAAAGGCTTCCAATCATCAAGCCCTGACATG
CTGCAGTCGGAAGTTTCTTTTCCGTGGGAGGGAGGCATTATCTACAGACTCCAACAAGCCCTCCAGC
GGAGACATCTCCCTTATGACAACAACCTCCCAGTGTGTCTGAGCGCTCCCTGCTGGCTATGCAAGAG
GACGCGGCCCGGGGGCTCGGAGAAGCTTTACAGAGTGCAGGGCAGTTTATGCTGGTGGGCCACTTG
TCGTGTCAAAGTCAAGGAAAGTTCTCCTGGACCAAGGCTTGGGAAAGATCTGTCAGAGGAGCCTTTC
GATATCTGGGGAACCTGGCATTCAACATTA AAAAGCGGATCCAAGACCCAGGAATGACAGGTTCTCT
GGAGACATTTTTGAAAGCAGCTCCCTAAGAGCGGGCCCTGCTCCCTTTCTCAAGGGAACCTGTCCCA
AATTGGCCTCGGTGGCAGGGGAGCCCGCAGAGCTGGACAGCGACACGCAGGGGGCTCGGAGGACTCAG
GCCGACGCCCCGCGACGGAGGGCAGGGCCACCTGCGGTGTGCGCGCCTGCAGCACGCCCCACGTC
CAGGTGGCAGGAAAGCCGAGCGGCCACCGCCAGGTGGAGCAGTACTTGACCTGAGCGGCGCCAC
GACCTCAGCGAGAGTGAGCTGGATGTGGCCGGCTGCAGAGCCGGGCCACACCTCAGTGC AAAAGACCC
CATGGGAGTGGGAGGATGACAAGCGGCCCCCGCTCCATACCCGGGCCAGGGAAGCCCGGCAGCG
GCAGCTGGATCCAGGGGCCCGGAAGGCGTGGAGACACCCACGGACCAGGGAGGCAAGCAGCCGAG
CGAGAGCAGCAGGTACGCAGAAAAAAGTGAAGCAGCGCAACTCCCTGCCAGCGGGCAGCAGGACAGT
CCGCGCCTGGGGGACGCTGGCTGGCTCGACTGGCAGAGAGAGCGCTGGCAGATCTGGGAGCTCCTGTGC
ACCGACAACCCCGATGCCCTGCCCGAGACGCTGGTC
ACGCGTACGCGGCCGCTCGAG - GFP Tag - GTTTAAAC
  
```

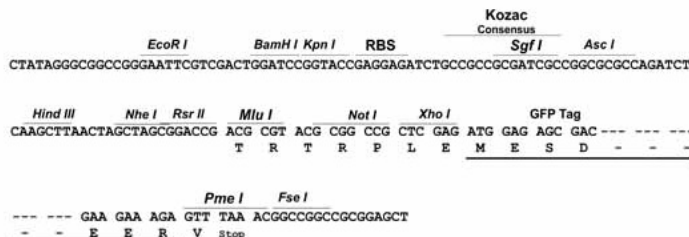
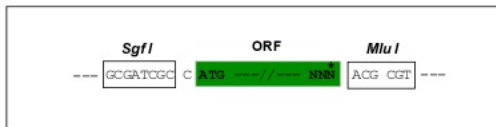
Protein Sequence: >Peptide sequence encoded by RG239584
Blue=ORF Red=Cloning site Green=Tag(s)

MGHPVYRGEKPKLHYAGDFTWNSMSGRSVRLRSVPIQSLSELERARLQEVAFYQLQQDCDLSQCITIPK
DGQKRKSLRKKLDLGLGKEKNKDFEIPQAFGMPLSQVIANDRAYKQDLQRDEQKASDFVASLLPF
GNKRQNKELSSSNSSLSTSETPNESTSPNTEPAPRARRRGAMSVDSITDLDDNQSRLLLEALQLSLPA
EAQSKKEKARDKKLSLNPYRQVPRLVDSCCQHLEKHGLQTVGIFRVGSSKKRVRQLREEFDRGIDVSL
EEEHSVHDVAALLKEFLRDMPPDLLTRELYTAFINTLLLEPEEQGLTLQLLIYLLPPCNCIDLHRLQLF
LSIVARHADDNISKDGQEVGTGNKMTSLNLAIFGPNLLHKQKSSDKEFSVQSSARAEESTAIIVVQKM
IENYEALFMVPPDLQNEVLISLLETDPDVVDYLLRRKASQSSSPDMLQSEVSFVGGRRHSSTDSNKASS
GDISPYDNNSPVLSESLAMQEDAAPGGSEKLYRVPQQFMLVGHLSKSSKRESSPGPRLGKDLSEEPF
DIWGTWHSTLKSQKDPGMTGSSGDI FESSLRAGPCSLSQGNLSPNWPWQGSPELSDTQGARRTQ
AAPATEGRAHPAVSRACSTPHVQVAGKAERPTARSEQYLTLGAHDLSESELDVAGLQSRATPQCQRP
HGSGRDDKRPPPPYPGPKPAAAAAWIQPPEGVETPTDQGGQAAEREQQVTQKKLSSANSLPAGEQDS
PRLGDAGWLDWQRRWQIWELLSTDNDALPETLV
TRTRPLEMESDESGLPAMEIECRITGTLNGVEFELVGGGEGTPEQGRMTNKMSTKGALTFSPYLLSHV
MGYGFYHFGTYPSGYENPFLHAINNGGYTNRIEKYEDGGVLHVSFSYRYEAGRVIKDFKVMGTGFPEP
SVIFTDKIIRSNTVEHLHPMGDNDLDGSFTRTFSLRDGGYSSVVDSMHFKSAIHPSILQNGGPMFA
FRRVEEDHSNTELGIVEYQHAFKTPDADAGEERV

Restriction Sites: Sgfl-Mlul

Cloning Scheme:

Cloning sites used for ORF Shutting:



ACCN: NM_001287242

ORF Size: 2382 bp

OTI Disclaimer: The molecular sequence of this clone aligns with the gene accession number as a point of reference only. However, individual transcript sequences of the same gene can differ through naturally occurring variations (e.g. polymorphisms), each with its own valid existence. This clone is substantially in agreement with the reference, but a complete review of all prevailing variants is recommended prior to use. [More info](#)

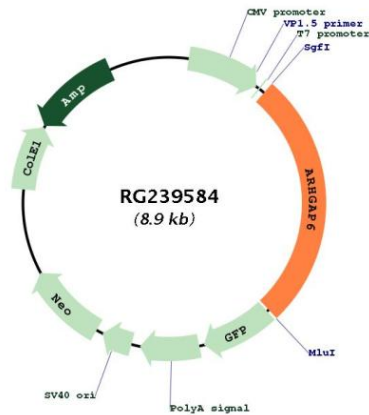
OTI Annotation: This clone was engineered to express the complete ORF with an expression tag. Expression varies depending on the nature of the gene.

Components: The ORF clone is ion-exchange column purified and shipped in a 2D barcoded Matrix tube containing 10ug of transfection-ready, dried plasmid DNA (reconstitute with 100 ul of water).

RefSeq: [NM_001287242.2](#)
RefSeq Size: 3943 bp
RefSeq ORF: 2385 bp
Locus ID: 395
UniProt ID: [O43182](#)
Cytogenetics: Xp22.2
MW: 88 kDa

Gene Summary: This gene encodes a member of the rhoGAP family of proteins which play a role in the regulation of actin polymerization at the plasma membrane during several cellular processes. This protein is thought to have two independent functions, one as a GTPase-activating protein with specificity for RhoA, and another as a cytoskeletal protein that promotes actin remodeling. Multiple alternatively spliced transcript variants encoding different isoforms have been found for this gene. [provided by RefSeq, Jul 2008]

Product images:



Circular map for RG239584