

Product datasheet for **RG239580**

FURIN (NM_001289824) Human Tagged ORF Clone

Product data:

Product Type:	Expression Plasmids
Product Name:	FURIN (NM_001289824) Human Tagged ORF Clone
Tag:	TurboGFP
Symbol:	FURIN
Synonyms:	FUR; PACE; PCSK3; SPC1
Mammalian Cell Selection:	Neomycin
Vector:	pCMV6-AC-GFP (PS100010)
E. coli Selection:	Ampicillin (100 ug/mL)



[View online »](#)

ORF Nucleotide Sequence:

>RG239580 representing NM_001289824.
 Blue=ORF Red=Cloning site Green=Tag(s)

```

GCTCGTTTAGTGAACCGTCAGAATTTTGTAAACGACTCACTATAGGGCGGCCGGGAATTCGTGACTG
GATCCGGTACCGAGGAGATCTGCCGCCACGATCGCC
ATGGAGCTGAGGCCCTGGTTGCTATGGGTGGTAGCAGCAACAGGAACCTTGGTCCTGCTAGCAGCTGAT
GCTCAGGGCCAGAAGGTCTTACCAACACGTGGGCTGTGCGCATCCCTGGAGGCCAGCGGTGGCCAAC
AGTGTGGCACGGAAGCATGGGTTCTCAACCTGGGCCAGATCTTCGGGGACTATTACCACTTCTGGCAT
CGAGGAGTGACGAAGCGGTCCTGTGCGCTCACCGCCCGCGGCACAGCCGGCTGCAGAGGGAGCCTCAA
GTACAGTGGCTGGAACAGCAGGTGGCAAAGCGACGGACTAAACGGGACGTGTACCAGGAGCCACAGAC
CCCAAGTTTCTCAGCAGTGGTACCTGTCTGGTGTCACTCAGCGGGACCTGAATGTGAAGCGGCCCTGG
GCGCAGGGCTACACAGGGCACGGCATTGTGGTCTCCATTCTGGACGATGGCATCGAGAAGAACCACCCG
GACTTGGCAGGCAATTATGATCCTGGGGCCAGTTTGTGTCAATGACCAGGACCCTGACCCCCAGCCT
CGGTACACACAGATGAATGACAACAGGCACGGCACACGGTGTGCGGGGAAGTGGCTGCGGTGGCCAAC
AACGGTGTCTGTGGTGTAGTGTGGCTACAACCGCCGATTGGAGGGGTGCGCATGCTGGATGGCGAG
GTGACAGATGACAGTGGAGGCACGCTCGCTGGGCCCTGAACCCCAACCACATCCACATCTACAGTGCCAGC
TGGGGCCCCGAGGATGACGGCAAGACAGTGGATGGGCCAGCCCGCTCGCCGAGGAGGCCTTCTCCGT
GGGGTTAGCCAGGGCCGAGGGGGCTGGGCTCCATCTTTGTCTGGGCCTCGGGGAACGGGGCCGGGAA
CATGACAGCTGCAACTGCGACGGCTACACCAACAGTATCTACACGCTGTCCATCAGCAGCGCCACGCAG
TTTGGCAACGTGCCGTGGTACAGCGAGGCTGCTCGTCCACACTGGCCACGACCTACAGCAGTGGCAAC
CAGAATGAGAAGCAGATCGTGACGACTGACTTGGCGCAGAAGTGCACGGAGTCTCACACGGGCACCTCA
GCCTCTGCCCCCTTAGCAGCCGGCATCATTGCTCTCACCTGGAGGCCAATAAGAACCTCACATGGCCG
GACATGCAACACCTGGTGGTACAGACCTCGAAGCCAGCCACCTCAATGCCAACGACTGGGCCACCAAT
GGTGTGGCCCGAAAGTGAAGCCACTCATATGGCTACGGGCTTTTGGACGACGGCCATGGTGGCCCTG
GCCAGAATTGGACCACAGTGGCCCCCAGCGAAGTGCATCATCGACATCCTCACCGAGCCCAAGAC
ATCGGGAAACGGCTCGAGGTGCGGAAGACCGTGACCGCGTGCCTGGGCGAGCCCAACCACATCACTCGG
CTGGAGCACGCTCAGGCGCGGCTCACCTGTCTATAATCGCCGTGGCGACCTGGCCATCCACCTGGTC
AGCCCCATGGGCACCCGCTCCACCCTGTGGCAGCCAGGCCACATGACTACTCCGCAGATGGGTTTAAAT
GACTGGCCCTTCATGACAACTATTCTGGGATGAGGATCCCTCTGGCGAGTGGTCTAGAGATTGAA
AACACCAGCGAAGCCAACAATATGGGACGCTGACCAAGTTCACCCTCGTACTCTATGGCACCGCCCT
GAGGGGTGCCCGTACCTCCAGAAAGCAGTGGCTGCAAGACCCTCACGTCCAGTCAAGCCTGTGTGGTG
TGGGAGGAAGGCTTCTCCCTGCACCAGAAGAGCTGTGTCCAGCACTGCCCTCCAGGCTTCGCCCCCAA
GTCCTCGATACGCACTATAGCACCGAGAATGACGTGGAGACCATCCGGGCCAGCGTCTGCGCCCCCTGC
CACGCCTCATGTGCCACATGCCAGGGGCCGGCCCTGACAGACTGCCTCAGCTGCCCCAGCCACGCCTCC
TTGGACCTGTGGAGCAGACTTGCTCCCGGCAAAGCCAGAGCAGCCGAGAGTCCCCGCCACAGCAGCAG
CCACCTCGGCTGCCCCGGAGGTGGAGGCGGGCAACGGCTGCGGGCAGGGCTGCTGCCCTCACACCTG
CCTGAGGTGGTGGCCGGCCTCAGCTGCGCCTTCATCGTGTGGTCTTCTGCTACTGCTTCTCTGGTCTG
CAGCTGCGCTCTGGCTTTAGTTTTCGGGGGTGAAGGTGTACACCATGGACCGTGGCCTCATCTCTAC
AAGGGGTGCCCCCTGAAGCCTGGCAGGAGGAGTGCCCGTCTGACTCAGAAGAGGACGAGGGCCGGGGC
GAGAGGACCGCCTTTATCAAAGACCAGAGCGCCCTC
ACCGGTACGCGGCCGCTCGAG – GFP Tag – GTTTAAAC
  
```

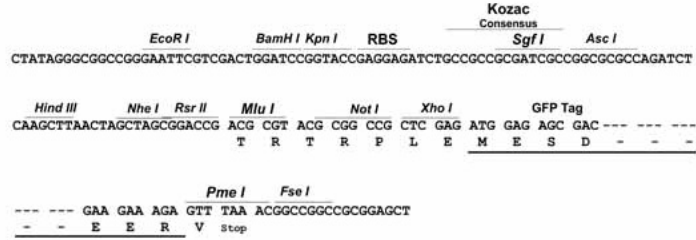
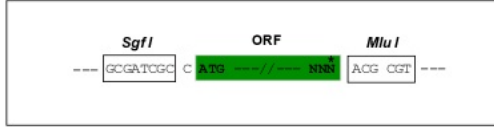
Protein Sequence: >Peptide sequence encoded by RG239580
Blue=ORF Red=Cloning site Green=Tag(s)

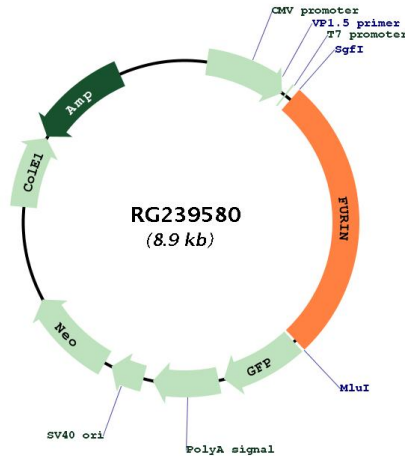
MELRPWLLWVVAATGTLVLLAADAQGQKVFTNTWAVRIPGGPAVANSVARKHGFLNLGQIFGDYYHFWH
RGVTKRSLSPHRPRHSRLQREPQVQWLEQQVAKRRTKRDVYQEPTDPKFPQQWYLSGVTQRDLNVKAAW
AQGYTGHGIVVSILDDGIEKNHPDLAGNYDPGASFDVNDQDPDPQPRYTQMNDNRHGTRCAGEVAAVAN
NGVCGVGVAYNARIGGVRMLDGEVTDVEARSLGLNPNHIHIYSASWGPEDDGKTVDGPARLAEEAFFR
GVSQGRGGLGSIFVWASGNGGREHDSNCNDGYTNSIYTLISSATQFGNVPWYSEACSSTLATTYSSGN
QNEKQIVTTDLRQKCTESHTGTSASAPLAAGIIALTLEANKNL TWRDMQHLVVQTSKPAHLNANDWATN
GVGRKVSYSYGYGLLDAGAMVALAQNWTTVAPQRKCIIDILTEPKDIGKRLEVRKTVTAACLGEPNHITR
LEHAQARLTL SYNRRGD LAIHLVSPMGTRSTLLAARPHDYSADGFNDWAFMTTHSWDEDPSGEWLEIE
NTSEANNYGTLTKFTLVLYGTAPEGLPVPPESSGCKLTSSQACVVCEEGFSLHQKSCVQHCPPGFAPQ
VLDTHYSTENDVETIRASVCAPCHASCATCQGPALTDCLSCPSHASLDPVEQTCSRQSQSSRESPPQQQ
PPRLPPEVEAGQRLRAGLLPSHLPEVVAGLSCAFIVLVFVTVFLVLQLRSGFSFRGVKVVYMDRGLISY
KGLPPEAWQECPDSEDEDEGRGERTAFIKDQSAL
TRTRPLEMESDESGLPAMEIECRITGTLNGVEFELVGGEGTPEQGRMTNKMSTKGALTFSPYLLSHV
MGYGFYHFGTYPSGYENPFLHAINNGGYTNRIEKYEDGGVLHVSFSYRYEAGRVI GDFKVMGTGFPEP
SVIFTDKIIIRSNATVEHLHPMGDNDLDGSFTRTFSLRDGGYSSVVDSHMHFKSAIHPSILQNGGPMFA
FRRVEEDHSNTELGIVEYQHAFKTPDADAGEERY

Restriction Sites: Sgfl-Mlul

Cloning Scheme:

Cloning sites used for ORF Shutting:



Plasmid Map:


ACCN: NM_001289824

ORF Size: 2382 bp

OTI Disclaimer: The molecular sequence of this clone aligns with the gene accession number as a point of reference only. However, individual transcript sequences of the same gene can differ through naturally occurring variations (e.g. polymorphisms), each with its own valid existence. This clone is substantially in agreement with the reference, but a complete review of all prevailing variants is recommended prior to use. [More info](#)

OTI Annotation: This clone was engineered to express the complete ORF with an expression tag. Expression varies depending on the nature of the gene.

Components: The ORF clone is ion-exchange column purified and shipped in a 2D barcoded Matrix tube containing 10ug of transfection-ready, dried plasmid DNA (reconstitute with 100 ul of water).

RefSeq: [NM_001289824.1](#), [NP_001276753.1](#)

RefSeq Size: 4352 bp

RefSeq ORF: 2385 bp

Locus ID: 5045

UniProt ID: [P09958](#)

Cytogenetics: 15q26.1

Protein Families: Druggable Genome, Protease, Transmembrane

MW: 86.7 kDa

Gene Summary:

This gene encodes a member of the subtilisin-like proprotein convertase family, which includes proteases that process protein and peptide precursors trafficking through regulated or constitutive branches of the secretory pathway. It encodes a type 1 membrane bound protease that is expressed in many tissues, including neuroendocrine, liver, gut, and brain. The encoded protein undergoes an initial autocatalytic processing event in the ER and then sorts to the trans-Golgi network through endosomes where a second autocatalytic event takes place and the catalytic activity is acquired. Like other members of this convertase family, the product of this gene specifically cleaves substrates at single or paired basic residues. Some of its substrates include parathyroid hormone, transforming growth factor beta 1 precursor, proalbumin, pro-beta-secretase, membrane type-1 matrix metalloproteinase, beta subunit of pro-nerve growth factor and von Willebrand factor. It is thought to be one of the proteases responsible for the activation of HIV envelope glycoproteins gp160 and gp140, and may play a role in tumor progression. Unlike SARS-CoV and other coronaviruses, the spike protein of SARS-CoV-2 is thought to be uniquely cleaved by this protease. Alternative splicing results in multiple transcript variants. [provided by RefSeq, Aug 2020]