

Product datasheet for **RG239577**

UHRF1 (NM_001290051) Human Tagged ORF Clone

Product data:

Product Type:	Expression Plasmids
Product Name:	UHRF1 (NM_001290051) Human Tagged ORF Clone
Tag:	TurboGFP
Symbol:	UHRF1
Synonyms:	hNP95; hUHRF1; huNp95; ICBP90; Np95; RNF106; TDRD22
Mammalian Cell Selection:	Neomycin
Vector:	pCMV6-AC-GFP (PS100010)
E. coli Selection:	Ampicillin (100 ug/mL)



[View online »](#)

ORF Nucleotide Sequence:

>RG239577 representing NM_001290051.
 Blue=ORF Red=Cloning site Green=Tag(s)

```

GCTCGTTTAGTGAACCGTCAGAATTTTGTAAACGACTCACTATAGGGCGGCCGGGAATTCGTGACTG
GATCCGGTACCGAGGAGATCTGCCGCCACGATCGCC
ATGTGGATCCAGGTTCCGACCATGGACGGGAGGCAGACCCACACGGTGGACTCGTGTCCAGGCTGACC
AAGGTGGAGGAGCTGAGCGGAAGATCCAGGAGCTGTTCCACGTGGAGCCAGGCCTGCAGAGGCTGTTC
TACAGGGGCAAACAGATGGAGGACGGCCATACCCTCTTCGACTACGAGGTCGCCCTGAATGACACCATC
CAGCTCCTGGTCCGCCAGAGCCTCGTGCTCCCCACAGCACCAAGGAGCGGGACTCCGAGCTCTCCGAC
ACCGACTCCGGCTGCTGCCTGGGCCAGAGTGAGTCAGACAAGTCTCCACCCACGGTGAGCGGCCGCC
GAGACTGACAGCAGGCCAGCCGATGAGGACATGTGGGATGAGACGGAATTGGGGCTGTACAAGGTCAAT
GAGTACGTCGATGCTCGGGACACGAACATGGGGCGTGGTTTGAGGCGCAGGTGGTCAGGGTGACCGGG
AAGGCCCTCCCGGACGAGCCCTGCAGCTCCACGTCCAGGCCGGCGTGGAGGAGGACGTCATTTAC
CACGTGAAATACGACGACTACCCGGAGAACGGCGTGGTCCAGATGAACTCCAGGGACGTCGAGCGCGC
GCCCGCACCATCATCAAGTGGCAGGACCTGGAGGTGGCCAGGTGGTCATGCTCAACTACAACCCCGAC
AACCCCAAGGAGCGGGGCTTCTGGTACGACCGGAGATCTCCAGGAAGCGCGAGACCAGGACGGCCCGG
GAACTCTACGCCAACGTGGTGGTGGGGATGATTCTCTGAACGACTGTCCGATCATCTTCGTGGACGAA
GTCTTCAAGATTGAGCGGCCGGGTGAAGGGAGCCCATGGTTGACAACCCCATGAGACGGAAGAGCGGG
CCGTCCTGCAAGCACTGCAAGGACGACGTGAACAGACTCTGCCGGTCTGCGCTGCCACCTGTGCGGG
GGCCGGCAGGACCCGACAAGCAGCTCATGTGCGATGAGTGCACATGGCCTTCCACATCTACTGCCTG
GACCCGCCCTCAGCAGTGTCCAGCGAGGACGAGTGGTACTGCCCTGAGTGCCGAATGATGCCAGC
GAGGTGGTACTGGCGGAGAGCGGCTGAGAGAGAGCAAGAAGAAGGCGAAGATGGCCTCGGCCACATCG
TCCTCACAGCGGGACTGGGGCAAGGGCATGGCCTGTGTGGCCGACCAAGGAATGTACCATGTCCCG
TCCAACCACTACGACCCATCCCGGGATCCCGTGGGACCATGTGGCGGTTCCGAGTCCAGGTCCAGC
GAGTGGGTGTCATCGGCCCGTGGCTGGCATACACGGCCGAGCAACGACGAGGAGTACTCCCTA
GTCCTGGCGGGGGCTATGAGGATGATGTGGACCATGGGAATTTTTTACATACACGGGTAGTGGTGGT
CGAGATCTTCCGGCAACAAGAGGACCGCGGAACAGTCTTGATCAGAACTACCAACACCAACAGG
GCGCTGGCTCTCAACTGCTTGTCCCATCAATGACCAAGAAGGGGCCGAGGCCAAGGACTGGCGGTG
GGGAAGCCGTCAGGGTGGTGCATGTCAAGGGTGGCAAGAATAGCAAGTACGCCCCCGTGGGGC
AACCGCTACGATGGCATCTACAAGTTGTGAAATACTGGCCCGAGAAGGGGAAGTCCGGGTTCTCGTG
TGGCGTACCTTCTGCGGAGGACGATGATGAGCTGGCCCTGGACGAAGGAGGGGAAGGACCGGATC
AAGAAGCTGGGGTGACCATGCAGTATCCAGAAGGCTACCTGGAAGCCCTGGCCAACCGAGAGCGAGAG
AAGGAGAACAGCAAGAGGGAGGAGGAGGAGCAGCAGGAGGGGGGTTCCGCTCCCCAGGACGGGCAAG
GGCAAGTGAAGCGGAAGTCGGCAGGAGGTGGCCCGAGCAGGGCCGGTCCCCGCGCCGGACATCCAAG
AAAACCAAGGTGGAGCCCTACAGTCTCACGGCCAGCAGAGCAGCCTCATCAGAGAGGACAAGAGCAAC
GCCAAGCTGTGGAATGAGGTCTGGCGTCACTCAAGGACCGCGCGGAGCGGCAGCCGTTCCAGTTG
TTCCTGAGTAAAGTGGAGGAGACGTTCCAGTGTATCTGCTGTGAGGAGCTGGTGTCCGGCCCATCAG
ACCGTGTGCCAGCACACGTGTGCAAGGACTGCCTGGACAGATCCTTTCGGGCACAGGTGTTCCAGCTGC
CCTGCCTGCCGCTACGACCTGGGCCGAGCTATGCCATGCAGGTGAACCGCCTTCGACACCGTCTCTC
AACCGTCTTCCCGGCTACGGCAATGGCCGG
ACGCGTACGCGGCCGCTCGAG - GFP Tag - GTTTAAAC
  
```

Protein Sequence: >Peptide sequence encoded by RG239577
 Blue=ORF Red=Cloning site Green=Tag(s)

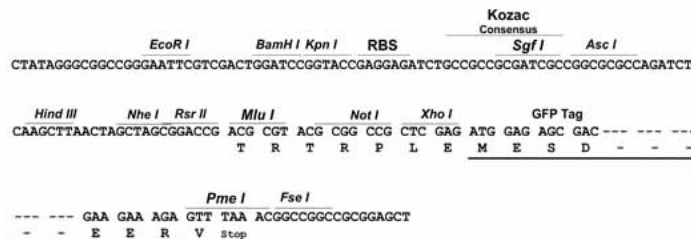
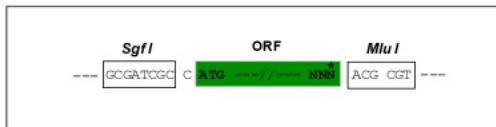
```

MWIQVRTMDGRQTHTVDSL SRL TKVEELRRKIQELFHVEPGLQRLFYRGKQMEDGHTLFDYEVRLNDTI
QLLVRQSLVLPSTKERDSELSDTDSGCCLGQSESDKSSSTHGAAAETDSRPADEDMWDETELGLYKVN
EYVDARDTNMGAWFEAQVVRVTRKAPSRDEPCSSTSRPALEEDVIYHVKYDDYPENGVVQMNSTRDVRAR
ARTIIKWQDLEVGQVVMLNYPDNPKERGFWDYDAEISRKRETRTARELYANVVLGDDSLNDCRIIFVDE
VFKIERPGE GSPMVDNPMRRKSGPCKHCKDDVNRLCRVCACHLCGGRQDPDKQLMCDECDMAFHICYCL
DPPLSSVPSSEDEWYCPECRNDASEVVLAGERLRESKKKAKMASATSSSQRDWKGGMACVGRKTECTIVP
SNHYGPIPGIPVGTMRFRVQVSESGVHRPHVAGIHGRSNDGAYSLVLAGGYEDDVHGNFFTYTGSGG
RDLSGNKRTAEQSCDQKLTNTNRALALNCFAPINDQEGAEAKDWRSGKPVVRNVKGGKNSKYAPAEG
NRYDGIYKVVKYWPEKKGSGFLVWRYLLRRDDDEPGPWTKEGKDRIKKLG LTMQYPEGYLEALANRERE
KENS KREEEQEGGFASPRTGKWKWRKSAGGGPSRAGSPRRTSKKTKVEPYSLTAQQSSLIREDKSN
AKLWNEVLASLKDRPASGSPFLFLSKVEETFQCICQELVFRPITTVQCQHNVCDCLDRSFRAQVFS
PACRYDLGRSYAMQVNQPLQTVLNQLFPGYGNGR
TRTRPLEMESDESGLPAMEIECRITGTLNGVEFELVGGGEGTPEQGRMTNKMSTKGALTFSPYLLSHV
MGYGFYHFGTYP SGYENPFLHAINNGGYTNRIEKYEDGGVLHVSFSYRYEAGRVIGDFKVMGTGFPE
SVIFTDKIIIRS NATVEHLHPMGDNDLDGSFTRTFSLRDGGYSSVVDSHMHFKSAIHPSILQNGGPMFA
FRRVEEDHSNTELGIVEYQHAFKTPDADAGEERV
  
```

Restriction Sites: Sgfl-Mlul

Cloning Scheme:

Cloning sites used for ORF Shutting:

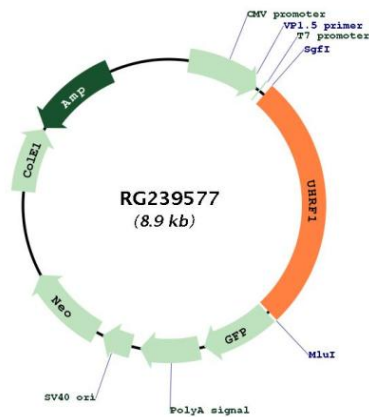


- ACCN:** NM_001290051
- ORF Size:** 2379 bp
- OTI Disclaimer:** The molecular sequence of this clone aligns with the gene accession number as a point of reference only. However, individual transcript sequences of the same gene can differ through naturally occurring variations (e.g. polymorphisms), each with its own valid existence. This clone is substantially in agreement with the reference, but a complete review of all prevailing variants is recommended prior to use. [More info](#)
- OTI Annotation:** This clone was engineered to express the complete ORF with an expression tag. Expression varies depending on the nature of the gene.
- Components:** The ORF clone is ion-exchange column purified and shipped in a 2D barcoded Matrix tube containing 10ug of transfection-ready, dried plasmid DNA (reconstitute with 100 ul of water).

RefSeq: [NM_001290051.2](#)
RefSeq Size: 3927 bp
RefSeq ORF: 2382 bp
Locus ID: 29128
UniProt ID: [Q96T88](#)
Cytogenetics: 19p13.3
Protein Families: Druggable Genome, Transcription Factors
MW: 90.3 kDa

Gene Summary: This gene encodes a member of a subfamily of RING-finger type E3 ubiquitin ligases. The protein binds to specific DNA sequences, and recruits a histone deacetylase to regulate gene expression. Its expression peaks at late G1 phase and continues during G2 and M phases of the cell cycle. It plays a major role in the G1/S transition by regulating topoisomerase IIalpha and retinoblastoma gene expression, and functions in the p53-dependent DNA damage checkpoint. It is regarded as a hub protein for the integration of epigenetic information. This gene is up-regulated in various cancers, and it is therefore considered to be a therapeutic target. Multiple transcript variants encoding different isoforms have been found for this gene. A related pseudogene exists on chromosome 12. [provided by RefSeq, Feb 2014]

Product images:



Circular map for RG239577