

Product datasheet for **RG239570**

Epac2 (RAPGEF4) (NM_001282901) Human Tagged ORF Clone

Product data:

Product Type:	Expression Plasmids
Product Name:	Epac2 (RAPGEF4) (NM_001282901) Human Tagged ORF Clone
Tag:	TurboGFP
Symbol:	RAPGEF4
Synonyms:	CAMP-GEFII; CGEF2; EPAC; EPAC 2; EPAC2; Nbla00496
Mammalian Cell Selection:	Neomycin
Vector:	pCMV6-AC-GFP (PS100010)
E. coli Selection:	Ampicillin (100 ug/mL)



[View online »](#)

ORF Nucleotide
Sequence:

>RG239570 representing NM_001282901.
Blue=ORF Red=Cloning site Green=Tag(s)

```
GCTCGTTTAGTGAACCGTCAGAATTTTGTAAATACGACTCACTATAGGGCGGCCGGGAATTCGTGACTG
GATCCGGTACCGAGGAGATCTGCCGCCGCGATCGCC
ATGATAAGAGATAGAAAATACCACCTAAAGACATACAGACAATGCTGTGTGGAACTGAACTGGTGGAC
TGGATGATGCAGCAGACACCATGTGTTCACTCCCGACTCAAGCTGTTGGCATGTGGCAAGTCTGTTA
GAAGATGGTGTCTCAACCACGTGGACCGAGGACCATTTCGAAGACAATATTTATTCTATCGATTT
CTGGATGATGAGCAGGAGGATGCCCTTTGCTACTGAGGAGGAGAAGAAGGAGTGTGATGAGGAGCTC
CAGGACACCATGTGCTGCTGTACAGATGGGCCCGACGCCACATGAGGATGATCCTTCGAAACCA
CCTGGCCAGAGGACTGTGGATGACCTAGAGATTATCTATGAGGAGCTTCTCATATTAAGCCTTATCC
CATCTTTCTACCACAGTAAACGAGAGTTAGCAGGTGTTCTCATTTTTGAGTCTCACGCCAAAGGAGGG
ACTGTGTTGTTTAAACAGGGGAAGAAGGTACCTCCTGGTACATTATTCTAAAAGGATCAGTGAATGTA
GTCATTTACGGCAAGGGTGTGGTCTGCACCTGCATGAAGGAGATGACTTCGGCAAGTTAGCACTAGTG
AATGATGCCCCACGAGCTGCCTCTATCGTCTTACGAGAAGATAACTGCCATTTCTTAAGAGTAGACAAG
GAGGATTTCAACCGGATCCTAAGGGACGTGGAGGCGAATACAGTCAGACTTAAAGAACATGACCAAGAT
GTCTTGGTGTGGAGAAGGTCCCAGCAGGGAACAGAGCTTCTAATCAAGGAAACTCACAGCTCAGCAA
AAGTATACTGTGATGTCAGGAACACCTGAAAAATTTTAGAGCATTCTTAGAAAACATACGCCTTGAG
GCAACTTTAAATGAAGCAACAGATTCTGTTTTAAATGACTTTATATGATGCACTGTGTTTTATGCCA
AATACCCAGCTTTGCCCGGCACTGGTGGCCACTACCACGCACAGCCTTCAAGGTACAGAACAGGAG
AAAATGGATTATGCCCTCAACAATAAGAGGCGAGTCATCCGCCTGGTCTACAGTGGGCTGCCATGAT
GGAGACCTCCTGCAAGAGGATGACGTGTCTATGGCCTTCTGGAGGAGTTTTATGATCTGTATCAGAT
GATGCCCGGATGATTGCTGCCCTCAAGGAGCACTGCCAGAGTTGGAGAAGATTGTCAAGCAAATCTCA
GAAGATGCAAAGGCACCACAAAAGAAGCACAAGGTTCTTTTGAACAGTTCAATACGGGCGATGAGAGA
GCCCAGAAGCGCCAGCCTATCCGCGGCTCTGATGAAGTTCTGTTAAGGTCTATTGCATGGACCACACC
TACACAACCATTCCGGTCCAGTGGCCACTTCCGGTGAAGGAAGTCATCAGTGCAGTTGCCGACAAGCTG
GGCTCCGGGGAGGGCCTGATCATAGTCAAGATGAGTTCGGGAGGAGAAAAGGTGGTGTCAAACCTAAT
GATGTTTCAGTATTTACGACGCTCACCATTAATGGACGCTGTTTGTCTGCCCGGAGAGCAATTCGAT
TCACTGACTCCCTTACCAGAACAGGAAGGCCAACTGTTGGAACAGTGGGAACTTTGAACTGATGAGC
TCAAAGATTTAGCATACCAGATGACAATTTATGATTGGGAACTTCAACTGCGTGCATGAGCTGGAG
CTAATCTATCACACATTTGGAAGGCATAATTTAAAAAGACCACAGCAAACCTTGATTTGTCTCTGAGG
AGATTTAATGAAATTCAGTTTTGGGTCGCTCACTGAGATCTGCCTTTGTTCTCAGCTCAGCAAGCGTGT
CAGCTATTAATAAATTTATTAAGATAGCAGCCACTGTAAAGGAGTATAAAAAATCTGAATTCCTTTTTT
GCCATCGTCATGGGACTAAGTAACGTTGCTGTGAGCCGCTTGGCACTAACGTGGGAGAACTGCCAAGC
AAGTTCAAGAAGTTCTATGCGGAGTTTGAAGTTAATGGACCCTTCAAGGAACCAAGGGCCTACAGG
CTGACAGTAGCTAAGCTGGAACCTCCTCTCATCCCCTTTCATGCCTTTGCTCATTAAAGATATGACATTT
ACTCATGAGGGGAACAAGACGTTTATTGACAATCTAGTAACTTTGAAAAATGCGCATGATTGCAAT
ACGGCCAGAACAGTGAGATACTACAGGAGCCAACCTTCAATCCTGATGCAGCTCAAGCTAATAAGAAC
CATCAGGATGTCGGGAGTTATGTACGGCAATTAATGTGATTGACAACCAAGGAACTTTATCACAGATG
TCACACAGATTAGAGCCTCGTCGACCA
ACGCGTACGCGGCCGCTCGAG - GFP Tag - GTTTAAAC
```

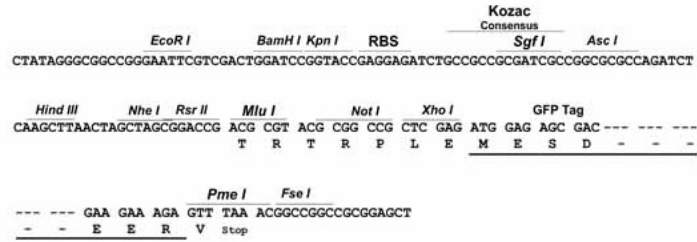
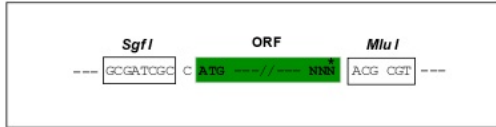
Protein Sequence: >Peptide sequence encoded by RG239570
 Blue=ORF Red=Cloning site Green=Tag(s)

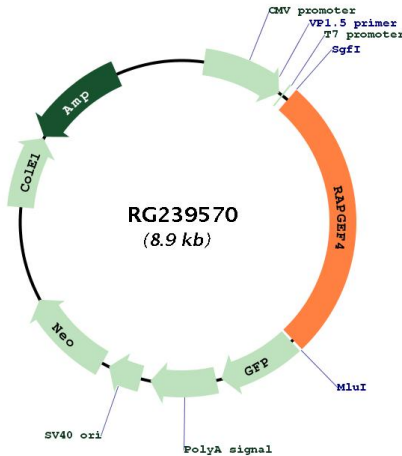
```
MIRDRKYHLKTYRQCCVGTTELVDWMMQQTPCVHSRTQAVGMWQVLLLEDGVLNHVDQEHFFQDKYLFYRF
LDDEHEDAPLPTEEEKKECDEELQDTMLLLSQMGPDAMRMILRKPPGQRTVDDLEIIYEELLHIKALS
HLSTTVKRELAGVLIFESHAKGGTVLFNQGEETSWYIILKGSVNVVIYKGGVVCVTLHEGDDFGKLALV
NDAPRAASIVLREDNCHFLRVDKEDFNRIIRDVEANTVRLKEHDQDVLVLEKVPAGNRASNQNSQPQQ
KYTVMSGTPEKILEHFLETIRLEATLNEATDSVLNDFIMMHCVFMPNTQLCPALVAHYHAQPSQGTEQE
KMDYALNNKRRVIRLVLQWAAMYGDLLQEDDVSMAFLEEFYVSVSDDARMI AALKEQLPELEKIVKQIS
EDAKAPQKKHKVLLQQFNTGDERAQKRQPIRGSDVLFKYYCMDHTYTTIRVPVATSVKEVISAVADKL
GSGEGLIIVKMSSGGEKVVLPNDVSFVTTLTINGRLFACPREQFDSL TPLPEQEGPTVGTGTFELMS
SKDLAYQMTIYDWELFNCVHELELIYHTFGRHNFKKTANLDFLRRFNEIQFWVTEICLCSQLSKRV
QLLKKFKIAAHCKEYKLNLSFFAIVMGLSNVAVSRLALTWEKLPKFKKFFYAEFESLMDPSRNHRAYR
LTVAKLEPPLIPFMPLLIKDMTF THEGNKTFIDNLVNF EKMRMIANTARTVRYYSQPFNPDAQAANKN
HQDVRSYVRQLNVIDNQRTL SQMSHRLPRRP
TRTRPLEMESDESGLPAMEIECRITGTLNGVEFELVGGGEGTPEQGRMTNKMSTKGALTFSPYLLSHV
MGYGFYHFGTYPSTYENPFLHAINNGGYTNRIEKYEDGGVLHVSFSYRYEAGRVIGDFKVMGTGFPEP
SVIFTDKIIIRSNATVEHLHPMGDNDLDGSFTRTFSLRDGGYSSVVDSHMHFKSAIHPSILQNGGPMFA
FRRVEEDHSNTELGIVEYQHAFKTPDADAGEERV
```

Restriction Sites: Sgfl-Mlul

Cloning Scheme:

Cloning sites used for ORF Shutting:



Plasmid Map:


ACCN:	NM_001282901
ORF Size:	2373 bp
OTI Disclaimer:	The molecular sequence of this clone aligns with the gene accession number as a point of reference only. However, individual transcript sequences of the same gene can differ through naturally occurring variations (e.g. polymorphisms), each with its own valid existence. This clone is substantially in agreement with the reference, but a complete review of all prevailing variants is recommended prior to use. More info
OTI Annotation:	This clone was engineered to express the complete ORF with an expression tag. Expression varies depending on the nature of the gene.
Components:	The ORF clone is ion-exchange column purified and shipped in a 2D barcoded Matrix tube containing 10ug of transfection-ready, dried plasmid DNA (reconstitute with 100 ul of water).
RefSeq:	NM_001282901.2
RefSeq Size:	3725 bp
RefSeq ORF:	2376 bp
Locus ID:	11069
UniProt ID:	Q8WZA2
Cytogenetics:	2q31.1
Protein Pathways:	Leukocyte transendothelial migration
MW:	91.4 kDa
Gene Summary:	Guanine nucleotide exchange factor (GEF) for RAP1A, RAP1B and RAP2A small GTPases that is activated by binding cAMP. Seems not to activate RAB3A. Involved in cAMP-dependent, PKA-independent exocytosis through interaction with RIMS2 (By similarity).[UniProtKB/Swiss-Prot Function]