

Product datasheet for **RG239563**

ITGB6 (NM_001282353) Human Tagged ORF Clone

Product data:

Product Type:	Expression Plasmids
Product Name:	ITGB6 (NM_001282353) Human Tagged ORF Clone
Tag:	TurboGFP
Symbol:	ITGB6
Synonyms:	A11H
Mammalian Cell Selection:	Neomycin
Vector:	pCMV6-AC-GFP (PS100010)
E. coli Selection:	Ampicillin (100 ug/mL)



[View online »](#)

ORF Nucleotide Sequence:

>RG239563 representing NM_001282353.
 Blue=ORF Red=Cloning site Green=Tag(s)

```
GCTCGTTTAGTGAACCGTCAGAATTTTGTAAACGACTCACTATAGGGCGGCCGGGAATTCGTGACTG
GATCCGGTACCGAGGAGATCTGCCGCCACGATCGCC
ATGGGGATTGAACTGCTTTGCCGTCTTTCTATTTCTAGGAAGGAATGATCACGTACAAGTGGCTGT
GCCCTGGGAGGTGCAGAAACCTGTGAAGACTGCCTGCTTATTGGACCTCAGTGTGCCTGGTGTCTCAG
GAGAAATTTACTCATCCATCTGGAGTTGGCGAAAGGTGTGATACCCAGCAAACCTTTAGCTAAAGGA
TGTCAATTAACCTTCATCGAAAACCTGTCTCCAAGTAGAAATACTTAAAAATAAGCCTCTCAGTGTA
GGCAGACAGAAAAATAGTTCTGACATTGTTGAGATTGCGCCTCAAAGCTTGATCCTTAAGTTGAGACCA
GGTGGTGCAGACTCTGCAGGTGCATGTCCGCCAGACTGAGGACTACCCGGTGGATTTGTATTACCTC
ATGGACCTCTCCGCTCCATGGATGACGACCTCAACACAATAAAGGAGCTGGGCTCCCGCTTTCCAAA
GAGATGTCTAAATTAACCAGCACTTTAGACTGGGCTTCGGATCTTTTGTGAAAAACCTGTATCCCTT
TTTGTGAAAAACAACCCAGAAGAAATTGCCAACCTTGCAGTAGTATTCCATACTCTGTTTACCTACA
TTTGGATTCAAGCACATTTTGCATTGACAAATGATGCTGAAAGATTCAATGAAATTGTGAAGAATCAG
AAAATTTCTGCTAATATTGACACACCCGAAGGTGGATTTGATGCAATTATGCAAGCTGCTGTGTGTAA
GAAAAATTTGGCTGGCGGAATGACTCCCTCCACCTCCTGGTCTTTGTGAGTGATGCTGATTCTCATTTT
GGAATGGACAGCAAACTAGCAGGCATCGTCATTCTAATGACGGGCTCTGTCACTTGACAGCAAGAAT
GAATACTCCATGTCAACTGTCTTGGAAATATCCAACAATTGGACAACCTATTGATAAACTGGTACAAAAC
AACGTGTTATTGATCTTCGCTGTAAACCAAGAACAAGTTCATTTATATGAGAATTACGCAAACTTATT
CCTGGAGCTACAGTAGGTCTACTTCAGAAGGACTCCGGAAACATTCTCCAGCTGATCATCTCAGCTTAT
GAAGAAGTCCGGTCTGAGGTGAACTGGAAGTATTAGGAGACACTGAAGGACTCAACTTGTCAATTTACA
GCCATCTGTAACAACGGTACCCTCTTCCAACACCAAAAGAAATGCTCTCATGAAAGTGGGAGACACA
GCTTCCTCAGCGTGACTGTGAATATCCACACTGCGAGAGAAGAAGCAGGCACATTATCATAAAGCCT
GTGGGGCTGGGGGATGCCTGGAATTACTTGTGAGCCAGAAATGCAACTGCGACTGTGAGAAAGAAGTG
GAAGTGAACAGCTCCAAATGTCACCACGGGAACGGCTCTTTCCAGTGTGGGGTGTGTGCCTGCCACCCT
GGCCACATGGGGCCTCGCTGTGAGTGTGGCGAGGACATGCTGAGCACAGATTCTGCAAGGAGGCCCA
GATCATCCCTCCTGCAGCGGAAGGGTACTGCTACTGTGGCAGTGTATCTGCCACTTGTCTCCCTAT
GGAAACATTTATGGCCCTTATTGCCAGTGTGACAATTTCTCTGCGTGAGACACAAGGGCTGCTCTGC
GGAGGTAACGGGACTGTGACTGTGGTGAATGTGTGTGCAGGAGCGGCTGGACTGGCGAGTACTGCAAC
TGCACCACCAGCACGGACTCCTGCGTCTCTGAAGATGGAGTGTCTGCAGCGGGCGGGGACTGTGTT
TGTGGCAAGTGTGTTGCACAAACCTGGAGCCTCAGGACCAACCTGTGAACGATGCTCCTACCTGTGGT
GACCCCTGTAACCTCTAAACGGAGCTGCATTGAGTGCCACCTGTGAGCAGCTGGCCAAAGCCGAGAAGAA
TGTGTGGACAAGTGCAAACTAGCTGGTGCACCATCAGTGAAGAAGAAGATTTCTCAAAGGATGGTTCT
GTTTCCTGCTCTCTGCAAGGAGAAAAATGAATGTCTTATTACATTCCTAATAACTACAGATAATGAGGGG
AAAACCATCATTACAGCATCAATGAAAAAGATTGTCCGAAGCCTCCAACATTTCCATGATCATGTTA
GGGTTTCCCTGGCTATTCTTCTCATCGGGTTGCTACTGTGCATCTGGAAGCTACTGGTGTCAATTT
CATGATCGTAAAGAAGTTGCCAAATTTGAAGCAGAACGATCAAAGCCAAGTGGCAAACGGGAACCAAT
CCACTTACAGAGGATCCACAAGTACTTTAAAAATGTAACCTATAAACACAGGGAAAAACAAAAGGTA
GACCTTTCCACAGATTGC
ACGCGTACGCGGCCGCTCGAG - GFP Tag - GTTTAAAC
```

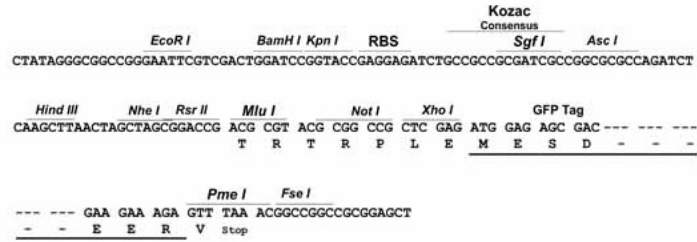
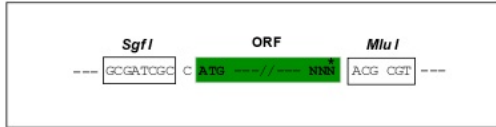
Protein Sequence: >Peptide sequence encoded by RG239563
Blue=ORF Red=Cloning site Green=Tag(s)

MGIELLCLFFLGRNDHVQGGCALGGAETCEDCLLIGPQCAWCAQENFTHPSGVGERCDTPANLLAKG
CQLNFIENPVSQVEILKNKPLSVGRQKNSSDIVQIAPQSLILKLRPGGAQTLQVHVRQTEDYPVDLYL
MDLSASMDDDLNTIKELGSRLSKEMSKLTSNFRLLGFGSFVEKPVSPFVKTTPEEIANPCSSIPYFCLPT
FGFKHILPLTND AERFNEIVKNQKISANIDTPEGGFDAIMQAAVCKEKIGWRNDSLHLLV FVSDADSHF
GMDSKLAGIVIPNDGLCHLDSKNEYSMSTVLEYPTIGQLIDKLVQNNVLLIFAVTQEQVHLYENYAKLI
PGATVGLLQKDSGNILQLIISAYEELRSEVELEVLGDTEGLNLSFTAICNNGTLFQHKKCSHMKVGD
ASFSVTVNIPHCERRSRHIIKPVGLGDALELLVSPECNCDQKEVEVNSSKCHHGNGSFQCGVCACHP
GHMGRCECGEDMLSTDSCKEAPDHPSCSGRGDCYCGQCICHLSPYGNIIYGPYCQDNFSCVRHKGLLC
GGNGDCDCGECVCRSGWTGEYCNTTSTDCVSEDGVLCSGRGDCVCGKCVCTNPGASGPTCERCPTCG
DPCNSKRSCIECHLSAAGQAREECVKCKLAGATISEEEDFSKDGSVSCSLQGENECLITFLITDNEG
KTIISINEKDCPKPPNIPMIMLVSLAILLIGVVLLCIWKLVSFHDRKEVAKFEAERSKAKWQTGTN
PLYRGSTSTFKNVTYKHREKQKVDLSTDC
RTRRPLEMESDESGLPAMEIECRITGTLNGVEFELVGGGEGTPEQGRMTNKMSTKGALTFSPYLLSHV
MGYGFYHFGTYP SGYENPFLHAINNGGYTNRIEKYEDGGVLHVSFSYRYEAGRVI GDFKVMGTGFPE
SVIFTDKIIIRS NATVEHLHPMGDNDLDGSFTRTFSLRDGGYSSVVDSHMHFKSAIHPSILQNGGPMFA
FRRVEEDHSNTELGIVEYQHAFKTPDADAGEERV

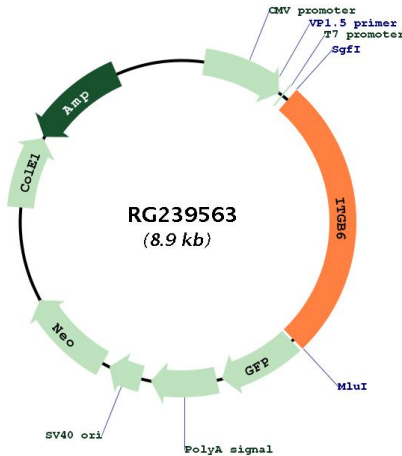
Restriction Sites: SgfI-MluI

Cloning Scheme:

Cloning sites used for ORF Shutting:



Plasmid Map:



ACCN:	NM_001282353
ORF Size:	2364 bp
OTI Disclaimer:	The molecular sequence of this clone aligns with the gene accession number as a point of reference only. However, individual transcript sequences of the same gene can differ through naturally occurring variations (e.g. polymorphisms), each with its own valid existence. This clone is substantially in agreement with the reference, but a complete review of all prevailing variants is recommended prior to use. More info
OTI Annotation:	This clone was engineered to express the complete ORF with an expression tag. Expression varies depending on the nature of the gene.
Components:	The ORF clone is ion-exchange column purified and shipped in a 2D barcoded Matrix tube containing 10ug of transfection-ready, dried plasmid DNA (reconstitute with 100 ul of water).
RefSeq:	NM_001282353.2
RefSeq Size:	4586 bp
RefSeq ORF:	2367 bp
Locus ID:	3694
UniProt ID:	P18564
Cytogenetics:	2q24.2
Protein Families:	Druggable Genome, Transmembrane
Protein Pathways:	Arrhythmogenic right ventricular cardiomyopathy (ARVC), Dilated cardiomyopathy, ECM-receptor interaction, Focal adhesion, Hypertrophic cardiomyopathy (HCM), Regulation of actin cytoskeleton
MW:	86.4 kDa

Gene Summary:

This gene encodes a protein that is a member of the integrin superfamily. Members of this family are adhesion receptors that function in signaling from the extracellular matrix to the cell. Integrins are heterodimeric integral membrane proteins composed of an alpha chain and a beta chain. The encoded protein forms a dimer with an alpha v chain and this heterodimer can bind to ligands like fibronectin and transforming growth factor beta 1. Alternate splicing results in multiple transcript variants. [provided by RefSeq, Sep 2013]