

Product datasheet for **RG239557**

MRP4 (ABCC4) (NM_001301830) Human Tagged ORF Clone

Product data:

Product Type:	Expression Plasmids
Product Name:	MRP4 (ABCC4) (NM_001301830) Human Tagged ORF Clone
Tag:	TurboGFP
Symbol:	ABCC4
Synonyms:	MOAT-B; MOATB; MRP4
Mammalian Cell Selection:	Neomycin
Vector:	pCMV6-AC-GFP (PS100010)
E. coli Selection:	Ampicillin (100 ug/mL)



[View online »](#)

**ORF Nucleotide
Sequence:**

>RG239557 representing NM_001301830.
 Blue=ORF Red=Cloning site Green=Tag(s)

```

GCTCGTTTAGTGAACCGTCAGAATTTTGTAAACGACTCACTATAGGGCGGCCGGGAATTCGTGACTG
GATCCGGTACCGAGGAGATCTGCCGCCGCGATCGCC
ATGCTGCCCGTGTACCAGGAGGTGAAGCCCAACCCGCTGCAGGACGCGAACCTCTGCTCACGCGTGTTC
TTCTGGTGGCTCAATCCCTTGTTAAAAATTGGCCATAAACGGAGATTAGAGGAAGATGATATGTATTCA
GTGCTGCCAGAAGACCGCTCACAGCACCTTGAGAGGAGTTGCAAGGGTCTGGGATAAAGAAGTTTTA
AGAGCTGAGAATGACGCACAGAAGCCTTCTTTAAACAAGAGCAATCATAAAGTGTTACTGGAAATCTTAT
TTAGTTTTGGAAATTTTACGTTAATTGAGGCACTTCGTCTTAGTAACATGGCCATGGGGAAGACAACC
ACAGGCCAGATAGTCAATCTGCTGTCCAATGATGTGAACAAGTTTGATCAGGTGACAGTGTCTTACAC
TTCCTGTGGGCAGGACCACTGCAGGCGATTGCAGTGACTGCCCTACTCTGGATGGAGATAGGAATATCG
TGCCTTGCTGGGATGGCAGTTCTAATCATTCTCCTGCCCTTGCAAAGCTGTTTTGGGAAGTTGTTCTCA
TCACTGAGGAGTAAAACGCAACTTTCACGGATGCCAGGATCAGGACCATGAATGAAGTTATAACTGGT
ATAAGGATAATAAAAATGTACGCCCTGGGAAAAGTCATTTTCAAATCTTATTACCAATTTGAGAAAAG
GAGATTTCCAAGATTCTGAGAAGTTCTGCCTCAGAGGGATGAATTTGGCTTCATTTTTCAGTGCAAGC
AAAATCATCGTGTGTTGTGACCTTACCACCTACGTGCTCCTCGGCAGTGTGATCAGCCAGCCGCGTG
TTCGTGGCAGTGACGCTGTATGGGGCTGTGCGGCTGACGGTTACCCTCTTCTCCCTCAGCCATTGAG
AGGGTGTGAGAGGCAATCGTCAGCATCCGAAGAATCCAGACCTTTTTGCTACTTGATGAGATACACAG
CGCAACCGTCAGTGCCTCAGATGGTAAAAAGATGGTGCATGTGACAGGATTTTACTGCTTTTTGGGAT
AAGGCATCAGAGACCCCAACTCTACAAGCCTTCTTTACTGTGACACTGGCGAATTGTTAGCTGTG
GTCGGCCCCGTGGGAGCAGGGAAGTCATCACTGTTAAGTCCGTGCTCGGGAATTGGCCCAAGTCAC
GGCTGGTGCAGCTGCATGGAAGAATTGCCTATGTGCTCAGCAGCCCTGGGTGTTCTCGGGAACCTG
AGGAGTAATATTTTATTTGGGAAGAAATACGAAAAGGAACGATATGAAAAAGTCATAAAGCCTTGTGCT
CTGAAAAAGGATTTACAGCTGTTGGAGGATGGTATCTGACTGTGATAGGAGATCGGGAACACCGCTG
AGTGGAGGGCAGAAAGCACGGGTAACCTTGCAAGAGCAGTGTATCAAGATGCTGACATCTATCTCTG
GACGATCCTCTCAGTGCAGTAGATGCGGAAGTTAGCAGACACTTGTTCGAACTGTGTATTTGTCAAATT
TTGCATGAGAAGATCACAATTTTAGTGACTCATCAGTTGCAGTACCTCAAAGCTGCAAGTCAGATTCTG
ATATTGAAAGATGGTAAAATGGTGCAGAAGGGGACTTACACTGAGTTCCTAAAATCTGGTATAGATTTT
GGCTCCCTTTTAAAGAAGGATAATGAGGAAAGTGAACAACCTCCAGTTCAGGAACCTCCACACTAAGG
AATCGTACCTTCTCAGAGTCTTCGGTTTGGTCTCAACAATCTTCTAGACCCTCCTTGAAAGATGGTGT
CTGAGAGCCAAGATACAGAGAATGTCCAGTTACACTATCAGAGGAGAACCCTTCTGAAGGAAAAGTT
GGTTTTCAGGCCTATAAGAATTACTTCAGAGCTGGTGCTCACTGGATTGTCTTCATTTTCTTATTTCTC
CTAAACACTGCAGCTCAGGTTGCCTATGTGCTTCAAGATTGGTGGCTTTCATACTGGGCAAAACAA
AGTATGCTAAATGCTACTGTAATGGAGGAGGAAATGTAACCGAGAAGCTAGATCTTAACTGGTACTTA
GGAATTTATTCAGGTTAACTGTAGTACCCTTTTGGCATAGCAAGATCTCTATTGGTATTCTAC
GTCCTTGTAACTCTTCAAACTTTGCACAACAAAATGTTTGTAGTCAATTCTGAAAGCTCCGGTATTA
TTCTTTGATAGAAATCCAATAGGAAGAATTTAAATCGTTTCTCAAAGACATTGGACACTTGGATGAT
TTGCTGCCGCTGACGTTTTTGTAGATTTTATCCAGAGATGGGATCTCGCTGTGTTGTCTGGCTGGTCTCA
AACTCC
AGCGGACCGACGCGTACGCGGCCGCTCGAG - GFP Tag - GTTTAAAC
  
```

Protein Sequence: >Peptide sequence encoded by RG239557
Blue=ORF Red=Cloning site Green=Tag(s)

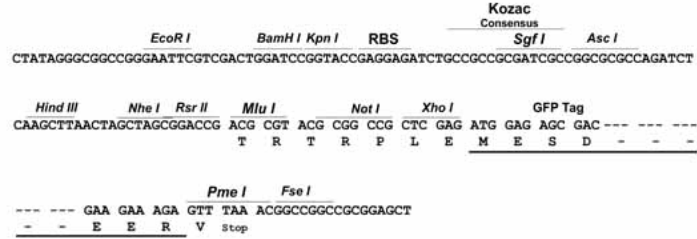
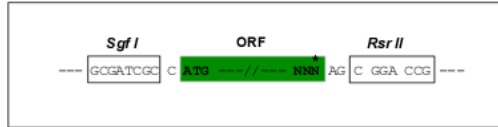
MLPVYQEVKPNPLQDANLCSRFFFWLNPLFKIGHKRRLEEDDMYSVLPEDRSQHLGEELQGFWDKEVL
RAENDAQKPSL TRAI IKCYWKS YLVLGIFTL IEALRLSNMAMGKTTTGQIVNLLSNDVNKFDQVTVFLH
FLWAGPLQAI AVTALLWMEIGISCLAGMAVLI ILLPLQSCFGKLFSSLRSKTATFTDARIRTMNEVITG
IRIIKMYAWEKSF SNLITNLRKKEISKILRSSCLRGMNLASFFSASKIIVFVTFTTYVLLGSVITASRV
FVAVTLYGAVRLTVTLFFPSAIERVSEAIVSIRRIQTFLLLDEISQRNRQLPSDGKMMVHVQDFTAFWD
KASETPTLQGLSFTVRPGELLAVVGPVGAGKSSLLSAVLGELAPSHGLVSVHGRIAYVSQQPWVFSGTL
RSNILFGKYEKERYEKVIKACALKKDLQLEDGDLTVIGDRGTTLSGGQKARVNLARAVYQDADIYLL
DDPLSAVDAEVSRLH FELCICQILHEKITILVTHQLQYLKAASQILILKDGKMQKGTYTEFLKSGIDF
GSLLKKDNEESEQPPVPGTPTLRNRTFSESSVWSQQSSRPSLKDGALESQDTENVPVTLSEENRSEGKV
GFQAYKNYFRAGAHWIVFIFLILLNTAAQVAYVLQDWLWLSYWANKQSMLNVTVNGGGNVTEKLDLNWYL
GIYSGLTVATVLFGIARSLLVFYVLVNSSQTLHNKMFESILKAPVLFDRNP IGRILNRF SKDIGHLDD
LLPLTFLDFIQRWDLAVLSWLVSNS

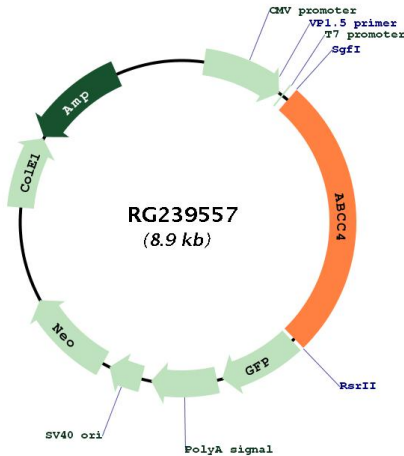
SGPTRTRPLEMESDESGLPAMEIECRITGTLNGVEFELVGGEGTPEQGRMTNKMKSTKGALTFSPYLL
SHVMGYGFYHFGTYPSTYENPFLHAINNGGYTNTRIEKYEDGGVLHVSFSYRYEAGRVI GDFKVMGTGF
PEDSVIFTDKIIIRSNATVEHLHPMGDNDLDGSFTRTFLRDGGYSSVVD SHMHFKSAIHPSILQNGGP
MFAFRRVEEDHSNTELGIVEYQHAFKTPDADAGEERV

Restriction Sites: Sgfl-RsrII

Cloning Scheme:

Cloning sites used for ORF Shuttling:



Plasmid Map:


ACCN: NM_001301830

ORF Size: 2352 bp

OTI Disclaimer: The molecular sequence of this clone aligns with the gene accession number as a point of reference only. However, individual transcript sequences of the same gene can differ through naturally occurring variations (e.g. polymorphisms), each with its own valid existence. This clone is substantially in agreement with the reference, but a complete review of all prevailing variants is recommended prior to use. [More info](#)

OTI Annotation: This clone was engineered to express the complete ORF with an expression tag. Expression varies depending on the nature of the gene.

Components: The ORF clone is ion-exchange column purified and shipped in a 2D barcoded Matrix tube containing 10ug of transfection-ready, dried plasmid DNA (reconstitute with 100 ul of water).

RefSeq: [NM_001301830.2](#)

RefSeq Size: 2865 bp

RefSeq ORF: 2355 bp

Locus ID: 10257

UniProt ID: [O15439](#)

Cytogenetics: 13q32.1

Protein Families: Druggable Genome, Ion Channels: Other, Transmembrane

Protein Pathways: ABC transporters

MW: 88.6 kDa

Gene Summary:

The protein encoded by this gene is a member of the superfamily of ATP-binding cassette (ABC) transporters. ABC proteins transport various molecules across extra- and intra-cellular membranes. ABC genes are divided into seven distinct subfamilies (ABC1, MDR/TAP, MRP, ALD, OABP, GCN20, White). This protein is a member of the MRP subfamily which is involved in multi-drug resistance. This family member plays a role in cellular detoxification as a pump for its substrate, organic anions. It may also function in prostaglandin-mediated cAMP signaling in ciliogenesis. Alternative splicing of this gene results in multiple transcript variants. [provided by RefSeq, Sep 2014]