

## Product datasheet for **RG239554**

### SEMCAP3 (PDZRN3) (NM\_001303142) Human Tagged ORF Clone

#### Product data:

Product Type:	Expression Plasmids
Product Name:	SEMCAP3 (PDZRN3) (NM_001303142) Human Tagged ORF Clone
Tag:	TurboGFP
Symbol:	SEMCAP3
Synonyms:	LN3; SEMACAP3; SEMCAP3
Mammalian Cell Selection:	Neomycin
Vector:	pCMV6-AC-GFP (PS100010)
E. coli Selection:	Ampicillin (100 ug/mL)



[View online »](#)

**ORF Nucleotide  
Sequence:**

>RG239554 representing NM\_001303142.  
 Blue=ORF Red=Cloning site Green=Tag(s)

```

GCTCGTTTAGTGAACCGTCAGAATTTTGTAAACGACTCACTATAGGGCGGCCGGGAATTCGTGACTG
GATCCGGTACCGAGGAGATCTGCCGCCCGCATCGCC
ATGGGATGCAGTCTGTGCAGCCTGCAGAAGCAAGAGGAGCAGTACAAATTACTCTATGAAGTTTGTGAG
GTCAACGGCAGAGACTTATCCAGAGCAACTCATGACCAGGCTGTGGAAGCTTTCAAGACAGCCAAGGAG
CCCATAGTGGTGCAGGTGTTGAGAAGAACACCAAGGACCAAAATGTTACGCCTCCATCAGAGTCTCAG
CTGGTGGACACGGGAACCCAAACCGACATCACCTTTGAACATATCATGGCCCTACTAAGATGTCCTCT
CCCAGCCACCCGTGCTGGATCCCTATCTCTTGGCAGAGGAGCATCCCTCAGCCCATGAATACTACGAT
CCAAATGACTACATTGGAGACATCCATCAGGAGATGGACAGGGAGGAGCTGGAGCTGGAGGAAGTGGAC
CTCTACAGAAATGAACAGCCAGGACAAGCTGGGCCTCACTGTGTGCTACCGGACGGACGATGAAGACGAC
ATTGGGATTTATCAGTGAGATTGACCCTAACAGCATTGCAGCCAAGGATGGGCGCATCCGAGAAGGA
GACCGCATTATCCAGATTAATGGGATAGAGGTGCAGAACCGTGAAGAGGCTGTGGCTCTTCTAACCACT
GAAGAAAATAAAAACCTTTTCATTGCTGATTGCAAGGCCTGAACCTCAGCTGGATGAGGGCTGGATGGAT
GATGACAGGAACGACTTTCTGGATGACCTGCACATGGACATGCTGGAGGAGCAGCACCACAGGCCATG
CAATTCACAGCTAGCGTCTGCAGCAGAAGAAGCAGCAGCAAGACGGTGGGACCACAGATACAGCCACC
ATCTTGTCCAACAGCAGCAGAGAAGGACAGCGGTGTGGGGCGGACCAGCAGAGACACCCGTAATGACGAG
AGCTCGGAGCAAGAGAACAATGGCGACGACGCCACCGCATCCTCAACCCCGTGGCGGGGACAGGAAG
CTCACCTGCAGCCAGGACACCTTGGGCAGCGGCGACCTGCCCTTCAGCAACGAGTCTTTTCATTTCCGGC
GACTGCACGGACGCCACTACCTGGGGATCCCGGTGGACGAGTGCAGCGCTTCCGCGAGCTCCTGGAG
CTCAAGTGCCAGGTGAAGAGCGCCACCCCTTACGGCTGTACTACCCTAGCGCCCCCTGGACGCCGGC
AAGAGTGACCCCTGAGAGCGTGGACAAGGAGCTGGAGCTGCTGAACGAAGAGCTGCCGAGCATCGAGCTG
GAGTGCCTGAGCATCGTGCAGCGCCACAAGATGCAGCAGCTCAAGGAGCAGTACCGCGAGTCTGGATG
CTGCACAACAGCGGCTTCCGCAACTACAACACCAGCATCGACGTGCGCAGACACGAGCTCTCAGATATC
ACCGAGCTCCCGGAGAAAATCCGACAAGGACAGCTCGAGCGCTACAACACAGGCGAGAGCTGCCGCAGC
ACCCCGCTCACCTGGAGATCTCCCCGACAACCTCTTGAGGAGAGCGGCGGAGGGCATCAGCTGCCCG
AGCAGCGAAGGGGCTGTGGGGACCAGGAAGCCTACGGGCGAGCCTCCAAGAATCTGCTCTCCATCAGC
GAAGATCCCGAAGTGGGCACCCCTACCTATAGCCCGTCCCTGAAGGAGCTGGACCCCAACCAGCCCTG
GAAAGCAAAGAGCGGAGAGCCAGCGACGGGAGCCGAGCCCCACGCCCAGCCAGAAGCTGGGCAGCGCC
TACCTGCCCTCTATCACCCTCCCATACAAGCAGCGCACATCCCGGCGCACGCCAGCACTACCAG
AGCTACATGCAGCTGATCCAGCAGAAGTCGGCCGTGGAGTACGCGCAAAGCCAGATGAGCCTGGTGAGC
ATGTGCAAGGACCTGAGCTCTCCACCCCGTGGAGCCGCGCATGGAGTGAAGGTGAAGATCCGAGC
GACGGGACGCGCTACATACCAAGAGGCCCGTGGCGGACCGCCTGCTGCGGGAGCGGCCCTGAAGATC
CGGGAAGAGCGCAGCGCATGACCACCGACGACGCGGTGAGCGAGATGAAGATGGGGCGCTACTGG
AGCAAGGAGGAGAGGAAGCAGCACTGGTGAAGGCCAAGGAGCAGCGGCGGCGGCGGAGTTCATGATG
CAGAGCAGGTTGGATTGTCTCAAGGAGCAGCAAGCAGCCGATGACAGGAAGGAGATGAACATTCTCGAA
CTGAGCCACAAAAAGATGATGAAGAAGAGGAATAAGAAAATCTTCGATAACTGGATGACGATCCAAGAA
CTCTTAACCCACGGCACAAAATCCCCGGACGGCACTAGAGTATACAATTCCTTCTATCGGTGACTACT
GTA
ACGCGTACGCGGCCGCTCGAG - GFP Tag - GTTTAAAC
  
```

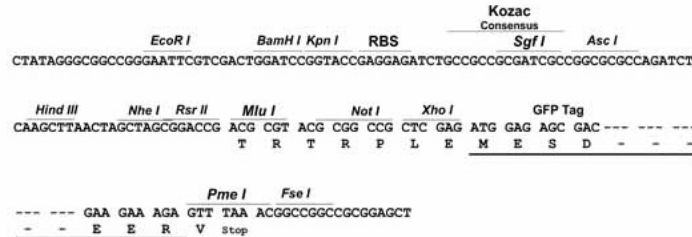
**Protein Sequence:** >Peptide sequence encoded by RG239554  
 Blue=ORF Red=Cloning site Green=Tag(s)

MGCSLCSLQKQEEQYKLLYEVCQVNGRDLRATHDQAVEAFKTAKEPIVVQVLRRTPRTKMFTPPSESQ  
 LVDGTGTDITFEHIMALTKMSSPSPVLDPYLLPEEHPSAHEYDPNDYIGDIHQEMDREELLEEVD  
 LYRMSQDKLGLTVCYRTDDEDDIGIYI SEIDPNSIAAKDGRIREGDRI IQINGIEVQNREEAVALLTS  
 EENKNFSLLIARPELQLDEGWMDDDRNDFLDDLHMDMLEEQHHQAMQFTASVLQKQKHDEDGGTDTAT  
 ILSNHEKDSGVGRTDESTRNDESSEQENNGDDATASSNPLAGQRKLTCSQDTLGSGDL PFSNESFISA  
 DCTDADYLGIPVDECERFRELLELKCQVKSATPYGLYYPSPGLDAGKSDPESVDKELELLNEELRSIEL  
 ECLSI VRAHKMQQLKEQYRESWMLHNSGFRNYNTSIDVRRHELSDITELPEKSDKDSSAYNTGESCRS  
 TPLTLEISPDNSLRRAAEGISCPSSSEGAVGTTEAYGPASKNLLSITEDPEVGTPTYSPLKELDPNQPL  
 ESKERRASDGSRSPTPSQKLGSAYLPSYHHSPYKHAHIPAHAQHYQSYMQLIQKSAVEYAQSQMSLVS  
 MCKDLSSTPSEPRMEWKVKIRSDGTRYITKRPVRDRLLRERALKIREERSGMTTDDDAVSEMKGRYW  
 SKEERQHLVKAKEQRRRREFMQSRLDCLKEQQAADDRKEMNILEL SHKKMMKKRNKKIFDNWMTIQE  
 LLTHGKSPDGTRVYNSFLSVTTV  
 TRTRPLEMESDESGLPAMEIECRITGTLNGVEFELVGGGEGTPEQGRMTNKMSTKGALTFSPYLLSHV  
 MGYGFYHFGTYP SGYENPFLHAINNGGYTNRIEKYEDGGVLHVSFSYRYEAGRVI GDFKVMGTGFPEP  
 SVIFTDKIIIRSNATVEHLHPMGDNDLDGSFTRTFSLRDGGYSSVVDSHMHFKSAIHPSILQNGGPMFA  
 FRRVEEDHSNTELGIVEYQHAFKTPDADAGEERV

**Restriction Sites:** Sgfl-Mlul

**Cloning Scheme:**

Cloning sites used for ORF Shutting:



- ACCN:** NM\_001303142
- ORF Size:** 2349 bp
- OTI Disclaimer:** The molecular sequence of this clone aligns with the gene accession number as a point of reference only. However, individual transcript sequences of the same gene can differ through naturally occurring variations (e.g. polymorphisms), each with its own valid existence. This clone is substantially in agreement with the reference, but a complete review of all prevailing variants is recommended prior to use. [More info](#)
- OTI Annotation:** This clone was engineered to express the complete ORF with an expression tag. Expression varies depending on the nature of the gene.
- Components:** The ORF clone is ion-exchange column purified and shipped in a 2D barcoded Matrix tube containing 10ug of transfection-ready, dried plasmid DNA (reconstitute with 100 ul of water).

RefSeq: [NM\\_001303142.2](#)

RefSeq Size: 3588 bp

RefSeq ORF: 2352 bp

Locus ID: 23024

UniProt ID: [Q9UPQ7](#)

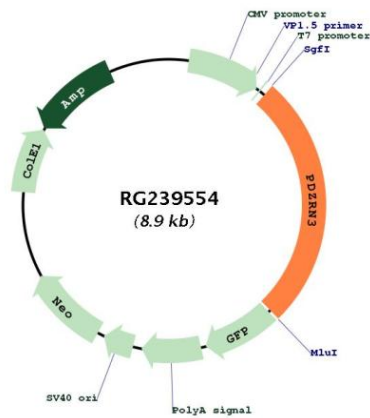
Cytogenetics: 3p13

Protein Families: Druggable Genome

MW: 89.6 kDa

**Gene Summary:** This gene encodes a member of the LNX (Ligand of Numb Protein-X) family of RING-type ubiquitin E3 ligases. This protein may function in vascular morphogenesis and the differentiation of adipocytes, osteoblasts and myoblasts. This protein may be targeted for degradation by the human papilloma virus E6 protein. Alternative splicing results in multiple transcript variants. [provided by RefSeq, Dec 2014]

**Product images:**



Circular map for RG239554