

Product datasheet for **RG239553**

alpha 1 Catenin (CTNNA1) (NM_001290310) Human Tagged ORF Clone

Product data:

Product Type:	Expression Plasmids
Product Name:	alpha 1 Catenin (CTNNA1) (NM_001290310) Human Tagged ORF Clone
Tag:	TurboGFP
Symbol:	CTNNA1
Synonyms:	CAP102; MDPT2
Mammalian Cell Selection:	Neomycin
Vector:	pCMV6-AC-GFP (PS100010)
E. coli Selection:	Ampicillin (100 ug/mL)



[View online »](#)

ORF Nucleotide Sequence:

>RG239553 representing NM_001290310.
 Blue=ORF Red=Cloning site Green=Tag(s)

```

GCTCGTTTAGTGAACCGTCAGAATTTTGTAAACGACTCACTATAGGGCGGCCGGGAATTCGTGACTG
GATCCGGTACCGAGGAGATCTGCCGCCGCGATCGCC
ATGGTTCGGGCAGCTCGAGCTTTGCTCTCTGCTGTACCCGGTTGCTGATTTTGGCTGACATGGCAGAT
GTCTACAAATTAATTGTTACAGTCAAAGTTGTGGAAGATGGTATCTTGAAGTTGAGGAATGCTGGCAAT
GAACAAGACTTAGGAATCCAGTATAAAGCCCTAAAACCTGAAGTGATAAGCTGAACATTATGGCAGCC
AAAAGACAACAGGAATTGAAAGATGTTGGCCATCGTGATCAGATGGCTGCAGCTAGAGGAATCCTGCAG
AAGAACGTTCCGATCCTCTATACTGCATCCCAGGCATGCCTACAGCACCCCTGATGTCGCAGCCTATAAG
GCCAACAGGGACCTGATATAACAAGCAGCTGCAGCAGGCGGTACAGGCATTTCCAATGCAGCCAGGCC
ACTGCCTCAGACGATGCCTCACAGCACCCAGGGTGGAGGAGGAGGAGAACTGGCATATGCACTCAATAAC
TTTGACAAACAAATCATTGTGGACCCCTTGAGCTTCAGCGAGGAGCGCTTAGGCCTTCCCTGGAGGAG
CGTCTGAAAAGCATCATTAGTGGGGCTGCCTTGATGGCCGACTCGTCTGCACCGGTGATGACCGTCGT
GAGCGAATTGTGGCAGAGTGAATGCTGTCCGCCAGGCCCTGCAGGACCTGCTTTCGGAGTACATGGGC
AATGCTGGACGTAAGAAAGAAGTGATGCACTCAATTCTGCAATAGATAAAATGACCAAGAAGACCAGG
GACTTGCCTAGACAGCTCCGCAAAGCTGTCATGGACCACGTTTCAGATTCTTTCCTGAAACCAATGTT
CCACTTTTGGTATTGATTGAAGCTGCAAAGAATGGAAATGAGAAAGAAGTTAAGGAGTATGCCAAAGTT
TTCCGTGAACATGCCAACAAATTGATTGAGGTTGCCAACTTGGCCTGTTCCATCTCAAATAATGAAGAA
GGTGTAAAGCTTGTTCGAATGTCTGCAAGCCAGTTAGAAGCCCTGTGCCTCAGGTTATTAATGTGCA
CTGGCTTTAGCAGCAAAACCACAGATAAACTGGCCCAAGAGAACATGGATCTTTTTAAAGAACAATGG
GAAAAACAAGTCCGTGTTCTCACAGATGCTGTCGATGACATTACTTCCATTGATGACTTCTTGGCTGC
TCAGAGAATCACATTTTGAAGATGTGAACAAATGTGTCATTGCTTCCAAGAGAAGGATGTGATGGC
CTGGACCGCACAGCTGGTGAATTCGAGGCCGGGCAGCCCGGGTATTACAGTAGTCACCTCAGAGATG
GACAACTATGAGCCAGGAGTCTACACAGAGAAGGTTCTGGAAGCCACTAAGCTGCTCTCCAACACAGTC
ATGCCACGTTTTACTGAGCAAGTAGAAGCAGCCGTGGAAGCCCTCAGCTCGGACCCTGCCAGCCCATG
GATGAGAATGAGTTTATCGATGCTTCCCGCCTGGTATATGATGGCATCCGGGACATCAGGAAAGCAGTG
CTGATGATAAGGACCCCTGAGGAGTTGGATGACTCTGACTTTGAGACAGAAGATTTTGTGTCAGAAGC
AGGACGAGCGTCCAGACAGAAGACGATCAGCTGATAGCTGGCCAGAGTGCCCGGGCGATCATGGCTCAG
CTTCCCAGGAGCAAAAAGCGAAGATTGCGGAACAGGTGGCCAGCTTCCAGGAAGAAAAGAGCAAGCTG
GATGCTGAAGTGTCCAAATGGGACGACAGTGGCAATGACATCATTGTGCTGGCCAAGCAGATGTGCATG
ATTATGATGGAGATGACAGACTTTACCCGAGGTAAAGGACCACTCAAAAATACATCGGATGTCATCAGT
GCTGCCAAGAAAATTGCTGAGGCAGGATCCAGGATGGACAAGCTTGGCCGACCATTGCAGACCATTGC
CCCAGCTCGGCTTGAAGCAGGACCTGCTGGCCTACCTGCAACGCATCGCCCTCTACTGCCACCAGCTG
AACATCTGCAGCAAGGTCAAGGCCGAGGTGCGAATCTCGGCGGGGAGCTTGTGTCTCTGGGGTGGAC
AGCGCCATGTCCCTGATCCAGGCAGCCAAGAATTGATGAATGCTGTGGTGCAGACAGTGAAGGCATCC
TACGTCGCCTCTACCAAATACCAAAGTACAGGGTATGGCTTCCCTCAACCTTCTGCTGTGTCATGG
AAGATGAAGGCACCAGAGAAAAAGCCATTGGTGAAGAGAGAGAAAACAGGATGAGACACAGACCAAGATT
AAACGGGCATCTCAGAAGAAGCACGTGAACCCGGTGCAGGCCCTCAGCGAGTTCAAAGCTATGGACAGC
ATC
AGCGGACCCACGCGTACGCGGCCGCTCGAG - GFP Tag - GTTTAAAC
  
```

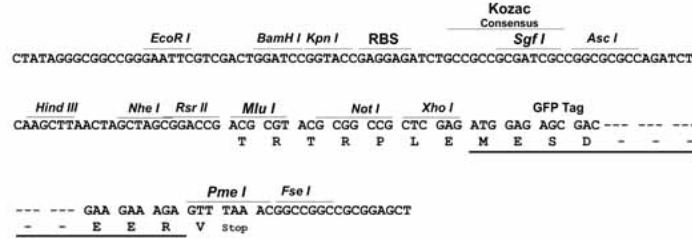
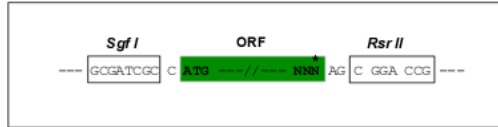
Protein Sequence: >Peptide sequence encoded by RG239553
Blue=ORF Red=Cloning site Green=Tag(s)

MVRAARALL SAVTRLL ILADMADVYKLL VQLKVVEDGILKLRNAGNEQDLGIQYKALKPEVDKLNIMAA
KRQQLKDVGHRDQMAAARGILQKNVPILYTASQACLQHPDVAA YKANRDLIYKQLQQAVTGISNAAQA
TASDDASQHQGGGGELAYALNNFDKQIIVDPLSFSEERFRPSLEERLESIISGAALMADSSCTRDDRR
ERIVAECNAVRQALQDLLSEYMGNAGRKERSDALNSAIDKMTKKTRDLRRQLRKAVMDHVSDFSLETNV
PLLVLIEAAKNGNEKVEKEYAQVFRHANKLIEVANLACSI SNNEEGVKLV RMSASQLEALCPQVINAA
LALAAKPQSKLAQENMDLFKEQWEKQVRVLTDAVDDITSIDDFLAVSENHILEDVNKCVIALQEKDVDG
LDRTAGAIRGRAARVIHVVTSEMDNYEPGVYTEKVL EATKLLSNTVM PRFTEQVEAAVEALSSDPAQPM
DENEFDASRLVYDGIRDIRKAVLMIRTPEELDDSD FETEDFDVRSRTSVQTEDDQLIAGQSARIM AQ
LPQEQKAKIAEQVASFQEEKSKLDAEVSKWDDSGNDIIVLAKQMCMIMMEMTDFTRGKGPLKNTSDVIS
AAKKIAEAGSRMDKLGR TIADHCPDSACKQDLLAYLQRIALYCHQLNICKSVKAEVQNLGGELV VSGVD
SAMSLIQAAKNLMNAVVTVKASYVASTKYQKSQGMASLNLP AVSWKMKAPEKKPLVKREKQDETQTKI
KRASQKKHVNPVQALSEFKAMDSI
SGPTRTRPLEMESDESGLPAMEIECRITGTLNGVEFELVGGGEGTPEQGRMTNKMKSTKGALTFSPYLL
SHVMGYGFYHFGTYP SGYENPFLHAINNGGYTNTRIEKYEDGGVLHVSFSYRYEAGRVI GDFKVMGTGF
PEDSVIFTDKIIRS NATVEHLHPMGDNDLDGSFTRTFSLRDGGYSSVVD SHMHFKSAIHPSILQNGGP
MFAFRRVEEDHSNTELGIVEYQHAFKTPDADAGEERV

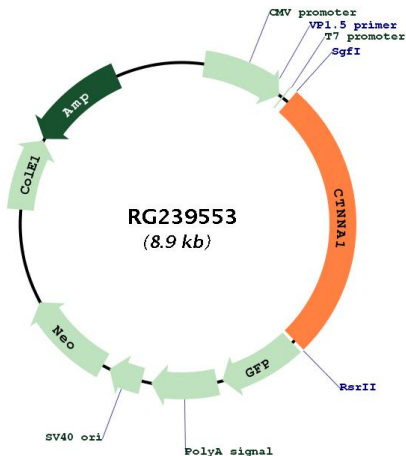
Restriction Sites: Sgfl-RsrII

Cloning Scheme:

Cloning sites used for ORF Shuttling:



Plasmid Map:



ACCN: NM_001290310

ORF Size: 2349 bp

OTI Disclaimer: The molecular sequence of this clone aligns with the gene accession number as a point of reference only. However, individual transcript sequences of the same gene can differ through naturally occurring variations (e.g. polymorphisms), each with its own valid existence. This clone is substantially in agreement with the reference, but a complete review of all prevailing variants is recommended prior to use. [More info](#)

OTI Annotation: This clone was engineered to express the complete ORF with an expression tag. Expression varies depending on the nature of the gene.

Components: The ORF clone is ion-exchange column purified and shipped in a 2D barcoded Matrix tube containing 10ug of transfection-ready, dried plasmid DNA (reconstitute with 100 ul of water).

RefSeq: [NM_001290310.3](#)

RefSeq Size: 3628 bp

RefSeq ORF: 2352 bp

Locus ID: 1495

UniProt ID: [P35221](#)

Cytogenetics: 5q31.2

Protein Families: Druggable Genome

Protein Pathways: Adherens junction, Arrhythmogenic right ventricular cardiomyopathy (ARVC), Endometrial cancer, Leukocyte transendothelial migration, Pathways in cancer, Tight junction

MW: 87.1 kDa

Gene Summary:

This gene encodes a member of the catenin family of proteins that play an important role in cell adhesion process by connecting cadherins located on the plasma membrane to the actin filaments inside the cell. The encoded mechanosensing protein contains three vinculin homology domains and undergoes conformational changes in response to cytoskeletal tension, resulting in the reconfiguration of cadherin-actin filament connections. Certain mutations in this gene cause butterfly-shaped pigment dystrophy. [provided by RefSeq, May 2016]