

Product datasheet for **RG239542**

AMOTL2 (NM_001278685) Human Tagged ORF Clone

Product data:

Product Type:	Expression Plasmids
Product Name:	AMOTL2 (NM_001278685) Human Tagged ORF Clone
Tag:	TurboGFP
Symbol:	AMOTL2
Synonyms:	LCCP
Mammalian Cell Selection:	Neomycin
Vector:	pCMV6-AC-GFP (PS100010)
E. coli Selection:	Ampicillin (100 ug/mL)



[View online »](#)

ORF Nucleotide Sequence:

>RG239542 representing NM_001278685.
 Blue=ORF Red=Cloning site Green=Tag(s)

```
GCTCGTTTAGTGAACCGTCAGAATTTTGTAAACGACTCACTATAGGGCGGCCGGGAATTCGTGACTG
GATCCGGTACCGAGGAGATCTGCCGCCACGATCGCC
ATGAGGACACTGGAAGACTCCTCGGGACAGTCTGCACCGCCTCATCCAGGAGCAGCTGCGCTACGGC
AACCTGACTGAGACGCGCACGCTGTAGCCATCCAGCAGCAGGCCCTGAGGGGTGGGGCTGGAACGGG
GGTACAGGGAGCCCCAGGCCTCCTGGAGATCCTGGCCCCAGAGGACAGTCAGGTGCTGCAGCAGGCC
ACCAGGCAGGAGCCCCAGGGCCAGGAGCACCAGGGCGGTGAGAACCACCTGGCAGAGAACCCTCTAC
CGGCTATGCCACAGCCCAGCAAGGGAGAGGAGCTGCCACCTATGAGGAGGCCAAAGCCCACTCGCAG
TACTATGCGGCCAGCAGGCAGGGACCCGGCCACATGCGGGGACCGAGATCCCCGTGGGGCCCCGGGA
GGCAGTCGGAGGCAGGACGAGGCCCTGCGGGAGCTGAGGCATGGGCACGTGCGCTCGTTGAGTGAACGG
CTCCTTCACTGTCCCTGGAGAGGAACGGCGCCCGGGCCCCAGCCACATGAGCTCCTCCACAGCTTC
CCACAGCTGGCCCCGAACCAGCAGGGCCCCCACTGAGGGGCCCTGCTGAGGGCCCAGAGTCCCGA
GGACCCCACTCAGTACCCTCATGTTGTACTAGCTCATGAGACCACCACTGCTGCTCACTGACCCACGG
TACCGTGGCCCGGCAGCCCGCACTTCCAGCATGCTGAAGTCAGGATCCTGCAGGCCAGGTGCCTCCT
GTGTTCTCCAACAGCAGCAGCAGTACCAGTACCTGCAGCAATCTCAGGAGCACCCCCCTCCCCACAT
CCAGCTGCTCTCGGCCATGGCCCCCTGAGCTCCCTCAGTCCACCTGCTGTGGAGGGGCCAGTGAGTGCC
CAGGCCTCCTCAGCCACCTCGGGCAGTGCCACCTGGCCAGATGGAGGCCGTGCTGAGGGAGAATGCC
AGGCTGCAGAGAGACAATGAGCGGCTGCAGAGGGAGCTGGAGAGCTCTGCGGAGAAGGCTGGCCGCATT
GAGAAGCTGGAAGCGAAATCCAGCGGCTCTCTGAGGCCATGAGAGCCTGACCAGAGCCTCCTCCAAG
CGTGAGGCCCTGGAGAAGACCATGCGGAACAAGATGGACAGTAAATGAGGAGGCTGCAAGACTTCAAC
CGGGACTTAGAGAGAGATTGGAATCTGCAAATCGCCGCTGGCAAGACACAGGAGGCCAGGCC
GGCAGTCAGGACATGGTGGCCAAGCTGCTTCTCAGAGCTACGAACAGCAGCAGGAGCAAGAGAAGCTG
GAGCGAGAGATGGCACTGCTGCGCGGCCATCGAGGACCAGCGCGGCTGCCGAGCTGCTGGAGCAG
GCTCTGGCAATGCGCAGGGCCGGCAGCTCGAGCCGAAGAGGAGCTGCGCAAGAAGCAGGCCTATGTG
GAGAAAGTGGAGCGGCTGCAGCAGGCGCTCGGGCAGCTGCAGGCAGCCTGTGAGAAGCGGGAGCAGCTG
GAGCTGCGTCTGCGGACTCGCCTGGAGCAGGAACCAAGGCCCTGCGTGCACAGCAGGCAGGTGCCCA
GGTGGTAGCAGTGGCAGTGGTGGTCTCCAGAGCTCAGCGCCTGCGACTGTCAGAACAACCTGCGAGAG
AAGGAGGAGCAGATCCTGGCGCTGGAGGCCGACATGACCAAGTGGGAGCAGAAGTATTTGGAGGAACGT
GCCATGAGGCAGTTTGCATGGATGCGGCTGCCACGGCTGCTGCTCAGCGTGACACCACTCTCATCCGA
CATTCCCCCAGCCCTACCCAGCAGCAGCTTCAATGAGGGTCTGCTCACTGGTGCCACAGGCATCAG
GAGATGGAAGCAGGTTAAAGGTGCTCCATGCCAGATCCTGGAGAAGGATGCAGTGATCAAGGTCTT
CAGCAGGCTCCAGGAGAGACCTGGCAAGGCCATCCAGGGCTCCCTGCGGCCTGCCAAGTCGGTGCCA
TCTGTTTTCGGGCTGCGGCAGCAGGAACCCAGGGCTGGCAAGGGCTCTCTTCTAGTGAGCGACAAACA
GCAGACGCCCCCTGCTCGGCTGACTACAGACAGAGCACCCACAGAGGAGCCAGTGGTCACAGCTCCCCCT
GCTGCCATGCCAACACGGGAGCAGAGATGGGAGCACCCAGACTGAGGGCCCCCAGACAGCACCTCC
ACCTGCCTGCCACCGAGCCTGACAGCCTTCTGGGGTGCAGCAGTAGCCAGAGAGCAGCCTCTCTGGAC
TCTGTAGCTACATCCAGAGTCCAGGACTTGTGAGACATGGTGGAGATACTGATC
ACGCGTACGCGGCCGCTCGAG – GFP Tag – GTTTAAAC
```

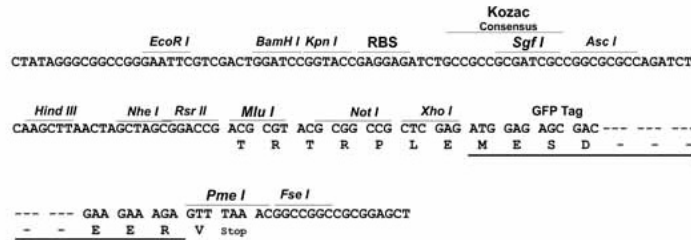
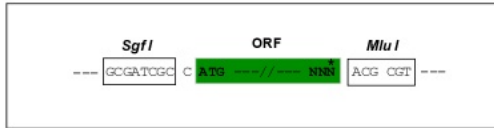
Protein Sequence: >Peptide sequence encoded by RG239542
 Blue=ORF Red=Cloning site Green=Tag(s)

MRTLEDSSGTVLHRLIQEQLRYGNLTETRTLLAIQQQALRGGAGTGGTGSPQASLEILAPEDSQVLQQA
 TRQEPQGEHQGGENHLAENTLYRLCPQPSKGEELPTYEEAKAHSQYAAQQAGTRPHAGDRDPRGAPG
 GSRRQDEALREL RHGHVRSLSERLLQLSLERNGARAPSHMSSSHSFPQLARNQQGPPLRGPPEAESR
 GPPPQYPHVLAHETTTAVTDPYRARGSPHFQHAQVILQAQVPPVFLQQQQYQYLQQSQEHPPPPH
 PAALGHGPLSSLSPPAVEGPVSAQASSATSGSAHLAQMEAVLRENARLQRDNERLQRELESSAEKAGRI
 EKLESEIQRLEAHESL TRASSKREALEKTRMNMKDMSEMRLQDFNRDLRERLESANRRLASKTQEAQA
 GSQDMVAKLLAQSYEQQEQEKLEREMALLRGAIEDQRRRAELLEQALGNAQGRAARAEELRKKQAYV
 EKVERLQQALGQLQAACEKREQLRLRTRLEQELKALRAQQAGAPGGSSGGSPELSALRLSEQLRE
 KEEQILALEADMTKWEQKYLEERAMRQFAMDAATAAAQRDRTLIRHSPQSPSSSFFNEGLLTGGHRHQ
 EMESRLKVLHAQILEKDAVIKVLQQRSRDPGKAIQGLRPAKSVPSVFAAAAAGTQGWQLSSSERQT
 ADAPARLTTDRAPTEEPVVTAPPAAHAKHGSRDGTQTEGPPDSTSTCLPPEPDSLLGCSSSQRASLD
 SVATSRVQDLSDMVEILI
 TRTRPLEMESDESGLPAMEIECRITGTLNGVEFELVGGGEGTPEQGRMTNKMKSTKGALTFSPYLLSHV
 MGYGFYHFGTYPSTYENPFLHAINNGGYNTRIEKYEDGGVLHVSFSYRYEAGRVIGDFKVMGTGFPED
 SVIFTDKIIIRSNATVEHLHPMGDNDLDGSFTRTFSLRDGGYSSVVDSHMHFKSAIHPSILQNGGPMFA
 FRRVEEDHSNTELGIVEYQHAFKTPDADAGEERV

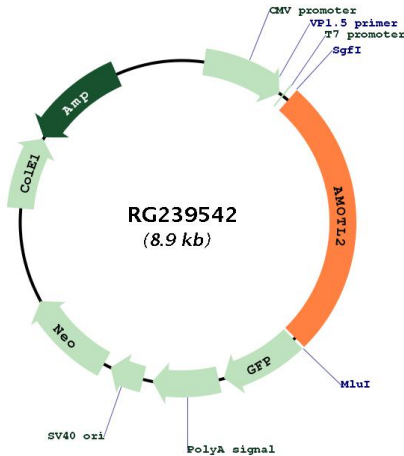
Restriction Sites: SgfI-MluI

Cloning Scheme:

Cloning sites used for ORF Shuttling:



Plasmid Map:



ACCN: NM_001278685

ORF Size: 2331 bp

OTI Disclaimer: The molecular sequence of this clone aligns with the gene accession number as a point of reference only. However, individual transcript sequences of the same gene can differ through naturally occurring variations (e.g. polymorphisms), each with its own valid existence. This clone is substantially in agreement with the reference, but a complete review of all prevailing variants is recommended prior to use. [More info](#)

OTI Annotation: This clone was engineered to express the complete ORF with an expression tag. Expression varies depending on the nature of the gene.

Components: The ORF clone is ion-exchange column purified and shipped in a 2D barcoded Matrix tube containing 10ug of transfection-ready, dried plasmid DNA (reconstitute with 100 ul of water).

RefSeq: [NM_001278685.2](#)

RefSeq Size: 4999 bp

RefSeq ORF: 2334 bp

Locus ID: 51421

UniProt ID: [Q9Y2J4](#)

Cytogenetics: 3q22.2

MW: 85.9 kDa

Gene Summary: Angiotensin is a protein that binds angiotensin, a circulating inhibitor of the formation of new blood vessels (angiogenesis). Angiotensin mediates angiotensin inhibition of endothelial cell migration and tube formation in vitro. The protein encoded by this gene is related to angiotensin and is a member of the motin protein family. Alternative splicing results in multiple transcript variants of this gene. [provided by RefSeq, Jul 2013]