

Product datasheet for **RG239537**

ECEL1 (NM_001290787) Human Tagged ORF Clone

Product data:

Product Type:	Expression Plasmids
Product Name:	ECEL1 (NM_001290787) Human Tagged ORF Clone
Tag:	TurboGFP
Symbol:	ECEL1
Synonyms:	DA5D; DINE; ECEX; XCE
Mammalian Cell Selection:	Neomycin
Vector:	pCMV6-AC-GFP (PS100010)
E. coli Selection:	Ampicillin (100 ug/mL)



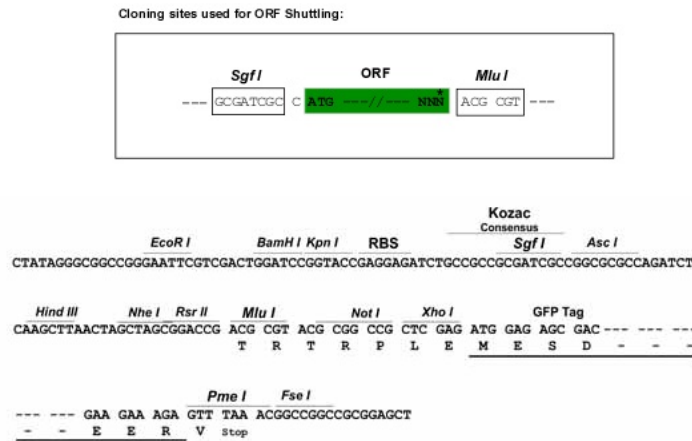
[View online »](#)

Protein Sequence: >Peptide sequence encoded by RG239537
 Blue=ORF Red=Cloning site Green=Tag(s)

MEPPYSLTAHYDEFQEVKYVSRGAGGARGASLPPGFPLGAARSATGARSGLPRWNRREVCLLSGLVFA
 AGLCAILAAMLALKYLPVAAGGGACPEGCPEKAFARAARFLAANLDASIDPCQDFYSFACGGWLRRH
 AIPDDKLTYGTTAAIGEQNEERLRLLARPGGPGGAAQRKVRFFRSCCLDMREIERLGRPRMVEIED
 CGGWDLGGAEERPVGVAARWDLNRLLYKAQGVYSAALFSLTVSLDRNSSRYVIRIDQDGLTLPERTLY
 LAQDESEKILAAAYRVFMERVL SLLGADAVEQKAQEILQVEQQLANITVSEHDDLRRDVSSMYNKVTLG
 QLQKITPHLRWKLLDQIFQEDFSEEEVLLATDYMQQVSQLIRSTPHRVLHNYLVWRVVVVLSEHLS
 PPFREALHELAQEMEGSDKPQELARVCLGQANRHF GMALGALFVHEHFAASKAKVQQLVEDIKYILGQ
 RLEELDWMDAETRAAARAKLQYMMVMVGYPDFLLKPDADVKEYEFVHEKTYFKNILNSIRFSIQLSVK
 KIRQEVDKWLLPPQALNAYYLPKNQMVFPAGILQPTLYDPDFPQSLNYGGIGTIIGHELTHGYDDWGG
 QYDRSGNLLHWTEASYSRFLRKAECIVRLYDNFTVYNQRVNGKHTLGENIADMGLKLAYHAYQKWVR
 EHGPEHPLPRLKYTHDQLFFIAFAQNWCIKRRSQSIYLQVLTDKHAPHYRVLGSVSQFEFGRAFHCP
 KDSPMNPAAHKCSVW
 TRTRPLEMESDESGLPAMEIECRITGTLNGVEFELVGGEGTPEQGRMTNKMSTKGALTFSPYLLSHV
 MGYGFYHFGTYP SGYENPFLHAINNGGYNTRIEKYEDGGVLHVSFSYRYEAGRVIGDFKVMGTGFPE
 SVIFTDKIIIRSNAIVEHLHPMGDNDLDGSFTRTFSLRDGGYSSVVD SHMHFKSAIHPSILQNGGPMFA
 FRRVEEDHSNTELGIVEYQHAFKTPDADAGEERV

Restriction Sites: SgfI-MluI

Cloning Scheme:



ACCN: NM_001290787

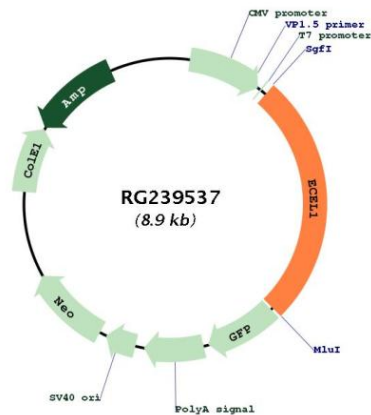
ORF Size: 2319 bp

OTI Disclaimer: The molecular sequence of this clone aligns with the gene accession number as a point of reference only. However, individual transcript sequences of the same gene can differ through naturally occurring variations (e.g. polymorphisms), each with its own valid existence. This clone is substantially in agreement with the reference, but a complete review of all prevailing variants is recommended prior to use. [More info](#)

OTI Annotation: This clone was engineered to express the complete ORF with an expression tag. Expression varies depending on the nature of the gene.

Components:	The ORF clone is ion-exchange column purified and shipped in a 2D barcoded Matrix tube containing 10ug of transfection-ready, dried plasmid DNA (reconstitute with 100 ul of water).
RefSeq:	NM_001290787.2
RefSeq Size:	2903 bp
RefSeq ORF:	2322 bp
Locus ID:	9427
UniProt ID:	O95672
Cytogenetics:	2q37.1
Protein Families:	Druggable Genome, Protease, Transmembrane
MW:	88.1 kDa
Gene Summary:	This gene encodes a member of the M13 family of endopeptidases. Members of this family are zinc-containing type II integral-membrane proteins that are important regulators of neuropeptide and peptide hormone activity. Mutations in this gene are associated with autosomal recessive distal arthrogryposis, type 5D. This gene has multiple pseudogenes on chromosome 2. Alternative splicing results in multiple transcript variants encoding different isoforms. [provided by RefSeq, Mar 2014]

Product images:



Circular map for RG239537