

Product datasheet for **RG239534**

HA1 (ARHGAP45) (NM_001282334) Human Tagged ORF Clone

Product data:

Product Type:	Expression Plasmids
Product Name:	HA1 (ARHGAP45) (NM_001282334) Human Tagged ORF Clone
Tag:	TurboGFP
Symbol:	HA1
Synonyms:	HA-1; HLA-HA1; HMHA1
Mammalian Cell Selection:	Neomycin
Vector:	pCMV6-AC-GFP (PS100010)
E. coli Selection:	Ampicillin (100 ug/mL)



[View online »](#)

ORF Nucleotide Sequence:

>RG239534 representing NM_001282334.
 Blue=ORF Red=Cloning site Green=Tag(s)

```

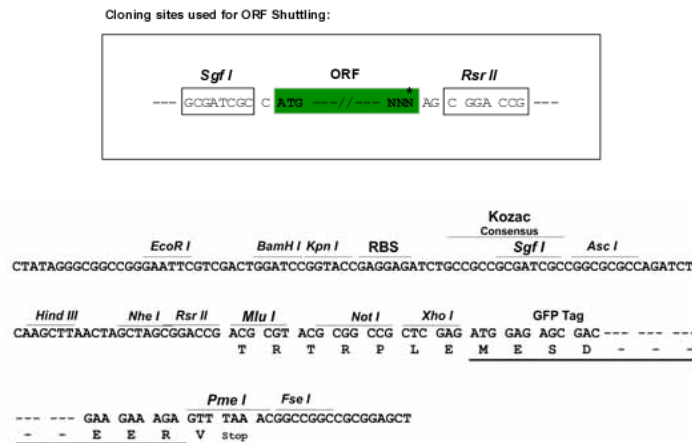
GCTCGTTTAGTGAACCGTCAGAATTTTGTAAACGACTCACTATAGGGCGGCCGGGAATTCGTGACTG
GATCCGGTACCGAGGAGATCTGCCGCCCGGATCGCC
ATGGGGTGGGAGGAAGGAGGAGCTGGGGAGACTGAGTCCCATCCGAGGATAGGGTTGGAAGTGGCC
TCCTGGCTCCCACACCCACAGCAAGAGGGAGTCCAACCTGCGCAAGGCCAAGCAGGGTTACGTGCAG
CGCTGCGAGGACCACGACAAGGCTCGCTTCTCTGTTGGCCAAGGGCGAGGAGGAGCAGGCTGGCAGCGG
CCGGGAGCAGGCAGCACGGCCACCAAGACCCTGGACAAGCGGCGGCGGCTGGAGGAGGAGGCCAAGAAC
AAGGGCGAGGAAGCTATGGCCACCTACCGCACCTGCGTGGCCGACGCGAAGACGCGAGAAGCAGGAGCTG
GAGGATACCAAGGTGACGGCGCTGCGGCAGATCCAGGAGGTATCCGGCAGAGCGACCAACCATCAAG
TCGGCCACGATCTCTACTACCAGATGATGCATATGCAGACGGCGCCGCTGCCCGTGCACTTCCAGATG
CTGTGTGAGAGCAGCAAGCTGTATGACCCAGGCCAGCAGTACGCCTCCCACGTGCGCCAGCTGCAGCGG
GACCAGGAGCCCAGTGTGCACTACGACTTTGAGCCCCACGTCTCCGCCAACGCCTGGTCCCCGTCATG
CGTGCCCGGAAGAGCAGCTTCAACGTGAGTGATGTGGCGGGCCGGAGGCTGCCGGGAGCCCCCAGAA
GAAGGCGGGTGCCTGAGGGCACACCTGCCAAGGACCACAGGGCCGGGCGAGGACACCAGGTTACAAAG
TCATGGCCGCTCTCGATCTCAGACTCGGACAGTGGGCTGGACCCCGGCCCTGGCGCAGGGGACTTTAAG
AAGTTCGAGCGGACGTATCCAGTGGTACCATGTCTGCCACGGAGGAGCTGGTGGACCCAGACGGTGGGA
GCCGGGGCTTCAGCCTTTGAGCAGGCTGACCTCAACGGCATGACCCCGAGCTGCCGGTGGCCGTGCC
AGTGGACCGTTCGCCACGAGGGGCTGTCCAAGGGCGCCGTAACCGGCTCCGGAAGCTCCGCACG
CCCCCAAGTCCCGGAGTGCAACAGCTACGTCTACTCCAGGGTGTGAGTGTGAAGAGTGTGCTGCTG
GCCTGCCACAAGAAATGTCTGGAGACGCTGGCCATACAGTGGGGCACAAGAAGTGAAGGCCCGCTG
CAGTGTTCGGCCAGGACTTCAGCCACGGCCCGCAGCGCCCGGACGGCGTCCCTTTCATCGTCAAG
AAGTGCCTCGCGAGATCGAGCGGGCGCTGCGCACCAAGGGCATCTACCGGGTCAATGGGGTAAAG
ACACGCGTGGAGAAGCTGTGCCAGGCTTCGAGAACGGCAAGGAGCTGGTTCGAGCTGTGCGAGCCCTG
CCCCACGACATCAGCAACGTCTCAAGCTCTACCTGCGTCAGTTCGCGAGCCGCTCATCTCCTTCGCG
CTTACCACGAGCTCGTAGGGCTGGCCAAGGACAGCCTGAAGGCAGAGGCCGAGGCCAAGGGCGGCTCC
CGGGGCCGGCAGGACGGCTCGGAGAGCGAGGCAGTGGCGGTGGCCCTGGCAGGTGGCTGCGGGAGCTC
CTGCGGGACCTGCCGCTGAGAACGGGCTCGCTGCAGTACCTGCTGCGTCACCTACGCAGGATCGTG
GAGGTGGAGCAGGACAACAAGATGACCCCGGGAACCTGGGCATCGTGTTCGGGCCACGCTGCTTCGG
CCACGGCCACCGAGGCCACCGTGTCCCTCTCCTCCCTGGTGGATTATCCCATCAGGCCCGCTCATC
GAGACTCTCATCGTCCACTACGGCTGGTCTCGAGGAGGAGCCGGAGGAGACCCCGGGGGCCAGGAC
GAGTCATCCAACCGAGGCTGAGGTAGTCTCCAGGTGCCGTACCTGGAGGCGGGCGAGGCGGTGGTC
TACCCGCTGCAGGAGGCGGGCGGACGGGTGCAGAGAATCCCGAGTTGTGTCCAACGATTCCGACTCG
GACCTAGAGGAGGCTCCGAGCTGCTGTCTCATCGGAGGCCAGTGGCCCTGGGCCACCTCAGTTCCTG
GAGCAGCAGCAGAGCGAGGCCAGCTAGAGGTGGCTTCTGGCAGCCACAGCGCAGTGGAGGAGCTG
GAGGCCACAGCCCGGAGGACGGGGACGGGACGAGGACGGCCCGGCCAGCAGCTCTCAGGATTCAAC
ACCAACGATCCAACAACGTGCTGCAGGCCCACTGCCCCCATGAGGCTCCGTGGCGGGCGGATGACA
CTGGGCTCCTGCAGGAAAGGCAGCCGGAATTCGTG
AGCGGACCGACGCGTACGCGGCCGCTCGAG - GFP Tag - GTTTAAAC
  
```

Protein Sequence: >Peptide sequence encoded by RG239534
 Blue=ORF Red=Cloning site Green=Tag(s)

MGVGRKGGAGETESHPRIGLELASWLPHQPQEAESNLRKAKQGYVQRCEHDHDKARFLVAKAEQAGSA
 PGAGSTATKTLDKRRRLEEEAKNKAEEAMATYRTCVAADAKTQKQLEEDTKVTALRQIQEVIRQSDQTIK
 SATISYYQMMHMQTAPLPVHFQMLCESSKLYDPGQQYASHVRQLQRDQEPDVHYDFEPHVSANAWSPVM
 RARKSSFNVSDVARPEAAGSPPEEGGCTEGTPAKDHRAGRGHQVHKSWPLSISDSDSGLDPGPGAGDFK
 KFERTSSSGTMSSTEELVDPDGGAGASAFEQADLNGMTPELPVAVPSGPFRRHEGLSKAARTHRLRLKRT
 PAKCRECNSYVYFQGAEECECLACHKKCLETLAIQCQGHKKLQGRQLQFLGQDFSHAARSAPDGVPFIVK
 KCVCEIERRALRTKGIYRVNGVKTRVEKLCQAFENGKELVELSQASPHDISNVLKLKYLRLQPEPLISFR
 LYHELVLAKDSLKAEAEAKAASRGRQDGESEAVAVALAGRLRELLRDLPPENRASLQYLLRHLRRIV
 EVEQDNKMTPGNLGIVFGPTLLRPRTEATVLSLVDYPHQARVIETLIVHYGLVFEEPEETPGGQD
 ESSNQRAEVVVQVPYLEAGEAVVYPLQEAADGCRESRVVSNDSDSLSEASELLSSSEASALGHL SFL
 EQQQSEASLEVASGSHSGSEEQLAAREDDGDDEDGPAQQLSGFNTNQSNVQLAPLPPMRLRGGRT
 LGSCRERQPEFV
 SGPTRTRPLEMESDESGLPAMEIECRITGTLNGVEFELVGGGEGTPEQGRMTNKMKSTKGALTFSPYLL
 SHVMGYGFYHFGTYPSTYENPFLHAINNGGYTNTRIEKYEDGGVLHVSFSYRYEAGRVIQDFKVMGTGF
 PEDSVIFTDKIIRSNTVEHLHPMGDNDLDGSFTRTFLRDGGYSSVVDSSHMFKSAIHPSILQNGGP
 MFAFRVVEEDHSNTELGIVEYQHAFKTPDADAGEERV

Restriction Sites: SgfI-RsrII

Cloning Scheme:



ACCN: NM_001282334

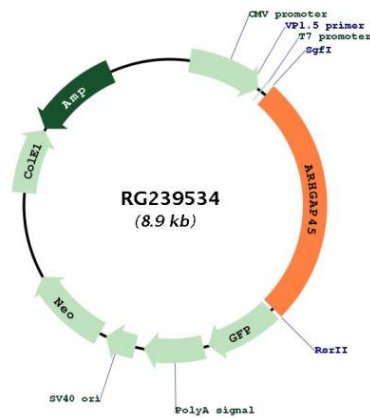
ORF Size: 2313 bp

OTI Disclaimer: The molecular sequence of this clone aligns with the gene accession number as a point of reference only. However, individual transcript sequences of the same gene can differ through naturally occurring variations (e.g. polymorphisms), each with its own valid existence. This clone is substantially in agreement with the reference, but a complete review of all prevailing variants is recommended prior to use. [More info](#)

OTI Annotation: This clone was engineered to express the complete ORF with an expression tag. Expression varies depending on the nature of the gene.

Components:	The ORF clone is ion-exchange column purified and shipped in a 2D barcoded Matrix tube containing 10ug of transfection-ready, dried plasmid DNA (reconstitute with 100 ul of water).
RefSeq:	NM_001282334.1 , NP_001269263.1
RefSeq Size:	5286 bp
RefSeq ORF:	2316 bp
Locus ID:	23526
UniProt ID:	Q92619
Cytogenetics:	19p13.3
MW:	85.1 kDa
Gene Summary:	Contains a GTPase activator for the Rho-type GTPases (RhoGAP) domain that would be able to negatively regulate the actin cytoskeleton as well as cell spreading. However, also contains N-terminally a BAR-domain which is able to play an autoinhibitory effect on this RhoGAP activity.[UniProtKB/Swiss-Prot Function]

Product images:



Circular map for RG239534