

Product datasheet for **RG239528**

TLE3 (NM_001282980) Human Tagged ORF Clone

Product data:

Product Type:	Expression Plasmids
Product Name:	TLE3 (NM_001282980) Human Tagged ORF Clone
Tag:	TurboGFP
Symbol:	TLE3
Synonyms:	ESG; ESG3; GRG3; HsT18976
Mammalian Cell Selection:	Neomycin
Vector:	pCMV6-AC-GFP (PS100010)
E. coli Selection:	Ampicillin (100 ug/mL)



[View online »](#)

ORF Nucleotide Sequence:

>RG239528 representing NM_001282980.
 Blue=ORF Red=Cloning site Green=Tag(s)

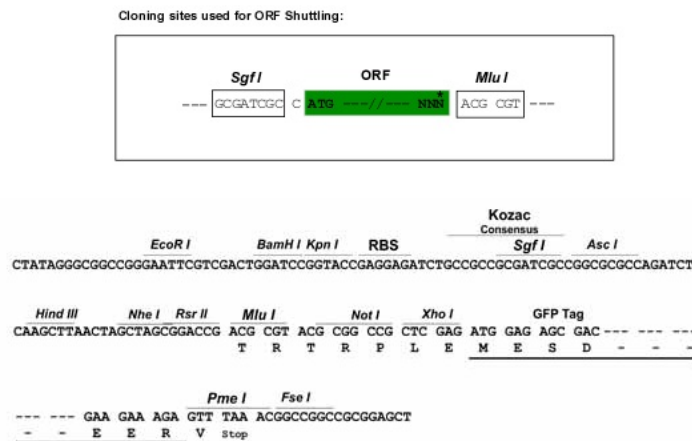
```
GCTCGTTTAGTGAACCGTCAGAATTTTGTAAACGACTCACTATAGGGCGGCCGGGAATTCGTGACTG
GATCCGGTACCGAGGAGATCTGCCGCCACGATCGCC
ATGTATCCGCAGGGCAGACATCCGGTCCCATCAACCCGGGCAGCCGGGATTTAAATTCACGGTGGCT
GAGTCTTGTGACAGGATCAAAGACGAATCCAGTTCTGCAAGCTCAGTATCACAGCCTCAAAGTGGAG
TAGCACAAGCTGGCAAACGAGAAGACGGAGATGCAGCGCCATTATGTGATGACTATGAGATGTCCTAT
GGCTTGAACATTGAAATGCACAAGCAGACAGAGATTGCGAAGAGACTGAACACAATTTAGCACAGATC
ATGCCTTTCCTGTACAAGAGCACCAGCAGCAGGTGGCGCAGGCAGTGGAGCGGCCAAGCAGGTCAAC
ATGACGGAGCTGAACGCCATCATCGGGCAGCAGCAGCTCCAGGCGCAGCACCTCTCCATGCCACACAC
GGCCCCCGGTCCAGTTGCCACCCACCCGTCAGGTCTCCAGCCTCCAGGAATCCCCCAGTGACAGGG
AGCAGCTCCGGGCTGCTGGCACTGGGCGCCCTGGGCAGCCAGGCCATCTGACGGTGAAGGATGAGAAG
AACCCATGAATCGATCACAGAGAGAGAATCCAGTGCGAATAACTCTGTGTACCCCTCGAAAGC
CTCCGGGCCAGTGAGAAGCACCGGGGCTCTGCGGACTACAGCATGGAAGCCAAGAAGCGGAAGCGGAG
GAGAAGGACAGCTTGAGCCGATACGACAGTGATGGAGACAAGAGTGATGATCTGGTGGTGGATGTTCC
AATGAGGACCCCGCAACGCCCGGGTACGCCCGGCACACTCCCTCCTGAAAATGGGCTGGACAAGGCC
CGTAGCCTGAAAAAGATGCCCCACCAGCCCTGCCTCGGTGGCCTCTTCCAGTAGCACACCTTCTCC
AAGACCAAGACCTTGGTCATAACGACAAATCCTCCACCCTGGGCTCAAGTCCAACACACCAACCCCA
AGGAACGACGCCCAACTCCAGGCACCAGCAGCAGCCAGGGCTCAGGTGATGCCGGTAAACCTCCG
GGCATGGACCCGATAGGTATAATGGCCTCGGCTCTGCGCACGCCCATCTCCATCACCAGCTCCTATGCG
GCGCCCTTCGCCATGATGAGCCACCATGAGATGAACGGCTCCCTCACCAGTCTGGCGCTACGCCGGC
CTCCACAACATCCACCCAGATGAGCGCCGCCGCTGCTGCAGCCGCTGCCTATGGCCGATCGCCA
ATGGTTGGTTTTGACCCCTCACCCCGATGCGGGCCACAGGCCCTCCCTCAAGCCTGGCCTCCATTCT
GGAGAAAACCAGCGTACTCATTCCATGTGAGTGCTGATGGGCAGATGCAGCCCGTGCCCTTCCCCAC
GACGCCCTGGCAGGCCCGGCATCCCGAGGCACGCCCGGCAGATCAACACACTCAGCCACGGGGAGGTG
GTGTGTGCCGTGACCATCAGCAACCCACGAGGCACGTCTACACAGGTGGCAAGGGCTGCGTGAAGATC
TGGGACATCAGCCAGCCAGGCAGCAAGAGCCCATCTCCAGCTGGACTGCCTGAACAGGGACAATTAC
ATCCGCTCCTGCAAGCTGCTCCCTGATGGGCGCACGCTCATCGTGGGCGGCGAGGCCAGCAGCTCACC
ATCTGGGACCTGGCCTCGCCACGCCCCGCATCAAGGCCGAGCTGACGTCTCGGCTCCCGCTGTTAT
GCCCTGGCATTAGCCCTGACGCCAAAGTCTGCTTCTCCTGCTGCAGCGATGGGAACATTGCTGTCTGG
GACCTGCACAACCAGACCCTGGTCAGGCAGTCCAGGGCCACACAGATGGGGCCAGCTGCATAGACATC
TCCCATGATGGACCAAACTGTGGACAGGGGCCCTGGACAACACGGTGGCCTCCTGGGACCTGCGGGAG
GGCCGACAGCTACAGCAGCATGACTTCACTTCCAGATCTTCTCGCTGGGCTACTGCCCACTGGGGAG
TGGCTGGCTGTGGGCATGGAGAGCAGCAACGTGGAGGTGCTGCACCACACCAAGCCTGACAAGTACCAG
CTGCACCTGCACGAGAGCTGCGTCTCCCTCAAGTTCGCTACTGCGGCAAGTGGTTCGTGAGCACT
GGGAAAGATAACCTTCTCAACGCTGGAGGACGCCCTTATGGAGCCAGCATATTCCAGTCTAAGAATCC
TCGTCTGTCTTGAGTTGTGACATTTAGCGGATGACAAATACATTGTAACAGGCTCTGGTACAAGAAG
GCCACAGTTTATGAGTCACTAC
ACGCGTACGCGGCCGCTCGAG - GFP Tag - GTTTAAAC
```

Protein Sequence: >Peptide sequence encoded by RG239528
 Blue=ORF Red=Cloning site Green=Tag(s)

MYPQGRHPAPHQPGQPGFKFTVAESCDRIKDEFQFLQAQYHSLKVEYDKLANEKTEMQRHYVMYEMSY
 GLNIEMHKQTEIAKRLNTILAQIMPFLSQEHQQQVAQAVERAKQVTMTELNAIIGQQQLQAQHLSHATH
 GPPVQLPPHPSGLQPPGIPPVTGSSSGLLALGALGSQAHLTKVDEKNHHELDHRERESSANNSVSPSES
 LRASEKHRGSADYSMEAKKRKAEEKDSLRYDSDGDKSDDLVDVSNEDPATPRVSPAHSPPENGLDKA
 RSLKKDAPTPASVASSSTPSSKTKDLGHNDKSSTPGLKSNTPTPRNDAPTPGTSTTPGLRSMGKPP
 GMDPIGIMASALRTPISITSSYAAPFAMMSHEMNGSLTSPGAYAGLHNIPPQMSAAAAAAAAAYGRSP
 MVGFDPHPPMRATGLPSSLASIPGGKPAYSFHVSADGQMOPVPPHFDALAGPGIPRHARQINTLSHGEV
 VCAVTISNPTRHVYTGKGCVKIWDISQPGSKSPISQLDCLNRDNYIRSKLLPDGRTLIVGGEASTLT
 IWDLASPTPRIKAELTSSAPACYALAI SPDAKVCFSCCSDGNIAVWDLHNQTLVRQFQGHTDGASCIDI
 SHDGTKLWTGGLDNTVRSWDLREGRQLQHDFTSQIFSLGYCPTGEWLAVGMESSNVEVLHHTKPKDYQ
 LHLHESCVLSLKFAYCGKWFVSTGKDNLLNAWRTPYGASIFQSKESSSVLSCDISADDKYIVTSGSGDKK
 ATVYEVIIY
 TRTRPLEMESDESGLPAMEIECRITGTLNGVEFELVGGEGTPEQGRMTNKMSTKGALTFSPYLLSHV
 MGYGFYHFGTYPSTYENPFLHAINNGGYNTRIEKYEDGGVLHVSFSYRYEAGRVIGDFKVMGTGFPED
 SVIFTDKIIIRSNATVEHLHPMGDNDLDGSFTRTFSLRDGGYSSVVDSHMHFKAISHPSILQNGGPMFA
 FRRVEEDHSNTELGIVEYQHAFKTPDADAGEERV

Restriction Sites: SgfI-MluI

Cloning Scheme:



ACCN: NM_001282980

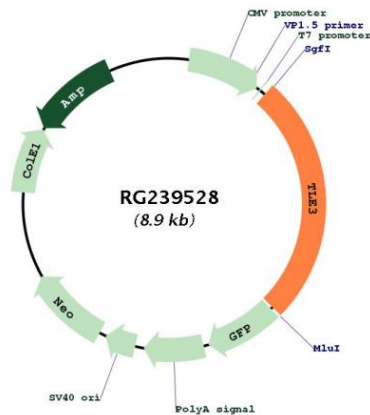
ORF Size: 2301 bp

OTI Disclaimer: The molecular sequence of this clone aligns with the gene accession number as a point of reference only. However, individual transcript sequences of the same gene can differ through naturally occurring variations (e.g. polymorphisms), each with its own valid existence. This clone is substantially in agreement with the reference, but a complete review of all prevailing variants is recommended prior to use. [More info](#)

OTI Annotation: This clone was engineered to express the complete ORF with an expression tag. Expression varies depending on the nature of the gene.

Components:	The ORF clone is ion-exchange column purified and shipped in a 2D barcoded Matrix tube containing 10ug of transfection-ready, dried plasmid DNA (reconstitute with 100 ul of water).
RefSeq:	<u>NM_001282980.2</u>
RefSeq Size:	5745 bp
RefSeq ORF:	2304 bp
Locus ID:	7090
UniProt ID:	<u>Q04726</u>
Cytogenetics:	15q23
Protein Families:	Transcription Factors
MW:	83.4 kDa
Gene Summary:	This gene encodes a transcriptional co-repressor protein that belongs to the transducin-like enhancer family of proteins. The members of this family function in the Notch signaling pathway that regulates determination of cell fate during development. Expression of this gene has been associated with a favorable outcome to chemotherapy with taxanes for ovarian carcinoma. Alternate splicing results in multiple transcript variants. Additional alternatively spliced transcript variants of this gene have been described, but their full-length nature is not known. [provided by RefSeq, Sep 2013]

Product images:



Circular map for RG239528