

Product datasheet for **RG239525**

Chloride Channel 5 (CLCN5) (NM_001282163) Human Tagged ORF Clone

Product data:

Product Type:	Expression Plasmids
Product Name:	Chloride Channel 5 (CLCN5) (NM_001282163) Human Tagged ORF Clone
Tag:	TurboGFP
Symbol:	Chloride Channel 5
Synonyms:	CIC-5; CLC5; CLCK2; DENTS; hCIC-K2; NPHL1; NPHL2; XLRH; XRN
Mammalian Cell Selection:	Neomycin
Vector:	pCMV6-AC-GFP (PS100010)
E. coli Selection:	Ampicillin (100 ug/mL)



[View online »](#)

ORF Nucleotide Sequence:

>RG239525 representing NM_001282163.
 Blue=ORF Red=Cloning site Green=Tag(s)

```

GCTCGTTTAGTGAACCGTCAGAATTTTGTAAACGACTCACTATAGGGCGGCCGGGAATTCGTGACTG
GATCCGGTACCGAGGAGATCTGCCGCCACGATCGCC
ATGTTCCTACCAGAGACAAGTCGTACAATGGTGGAGGAATAGTTCCTTCAAATAGGATCATGGACTTC
TTGGAGGAGCCAATCCCTGGTGTAGGGACCTATGATGATTTCAATAACAATTGATTGGGTGAGAGAGAAG
TCTCGAGACCGGGATAGGCACCGAGAGATTACCAATAAAAAGCAAAGAGTCAACATGGGCCTTAATTCAC
AGTGTGAGTGATGCTTTTTCCGGCTGGTGTGATGCTCCTTATTGGGCTTTTATCAGGTTCTGTAGCT
GGTTTGATAGACATCTCTGCTCATTGGATGACAGACTTAAAAGAAGGTATATGCACAGGGGGATTCTGG
TTAAACCATGAACATTGTTGCTGGAACCTCTGAGCATGTCACCTTTGAAGAGAGAGACAAATGTCCAGAG
TGGAATAGTTGGTCCCAGCTTATCATCAGCACAGATGAGGGAGCCTTTGCCTACATAGTCAATTATTTT
ATGTACGCTCTGGGCTCTCTATTTGCCTTCTTGCCGTATCTTGTCAAGGTGTTTGCCTTAT
GCCTGTGGCTCTGGAATCCCTGAGATAAAAATATCTTGAGTGGTTTCATTATTAGGGGCTATTTGGT
AAGTGGACTCTGGTTATCAAACCATCACCTTGGTGTGCGAGTGCATCTGGCTTGAGCCTGGGCAAA
GAGGGCCCTCTAGTGCAGTGGCTTGTGCTGTGGGAACATCCTGTGCCACTGCTCAACAAATACAGG
AAGAATGAAGCCAAGCGCAGAGAGGTCTTGTCCGCTGCAGCAGCAGCTGGTGTATCTGTAGCCTTTGGA
GCACCTATAGGTGGAGTATTATTCAGCCTTGAAGAGGTGAGTACTATTTTCCCCTAAAACATTGTGG
CGTTCAATCTTTGCTGCCTTGGTGGCAGCATTCACTCTACGCTCCATCAATCCATTTGGGAACAGCCGC
CTGGTACTATTTTATGTGGAGTTTACACCCCATGGCATCTCTTTGAGCTCGTGCCATTCTTCTGCTG
GGCATAATTTGGTGGTCTGTGGGGAGCACTGTTTATCCGCACAAACATTGCCTGGTGTGCGAAGCGAAAG
ACCACCCAGTTGGGCAAGTATCCTGTTATAGAGGTACTCGTGTGACAGCCATCACTGCCATCCTGGCT
TTCCCCAATGAATACACTCGGATGAGCACAAGTGAGCTCATTCTGAGCTGTTTAAATGACTGGCCCTT
CTGGACTCCTCCAAGCTCTGTGATTATGAGAACCCTTCAACACAAGCAAAGGGGTGAAGTGCCTGAC
AGACCGGCTGGCGTGGGAGTCTACAGTGAATGTGGCAGCTGGCTTTAACTCATACTGAAAATTGTC
ATTACTATATTCACCTTTGGCATGAAGATCCCTTCTGGCCTTTTATCCCTAGCATGGCTGTTGGTGT
ATAGCAGGTGCACTTCTAGGAGTAGGAATGGAACAGCTGGCTTATTACCACCAGGAATGGACCGTCTT
AATAGCTGGTGTAGTCAGGGAGCTGATTGCATCACCCCGGCCTTTATGCAATGGTTGGGGCTGCAGCC
TGCTTAGGTGGGGTACTCGGATGACTGTTTCTTGTGTCATAATGTTTGAAGTACTGGTGGCTTA
GAATACATCGTGCCTCTGATGGCTGCAGCCATGACAAGCAAGTGGTGGCAGATGCTCTTGGCGGGAG
GGCATCTATGATGCCACATCCGTCTCAATGGATACCCCTTTCTTGAAGCCAAAGAAGAGTTTGCTCAT
AAGACCTGGCAATGGATGTGATGAAACCCCGGAGAAATGATCCTTTGTTGACTGTCTTACTCAGGAC
AGTATGACTGTGGAAGATGTAGAGACCATAATCAGTGAACCACTTACAGTGGCTTCCCAGTGGTGGTA
TCCCGGGAGTCCCAAAGACTTGTGGGCTTTGTCCTCCGAAGAGATCTCATTATTTCAATTGAAAATGCT
CGAAAGAAACAGGATGGGGTTGTTAGCACTTCCATCATTATTTACGGAGCATTCTCCTCCATTGCCA
CCATACACTCCACCACTCTAAAGCTTCGGAACATCCTCGATCTCAGCCCTTCACTGTGACTGACCTT
ACCCCATGGAGATCGTAGTGGATATTTCCGAAAGCTGGGACTGCGGCAGTGCCTGGTTACACACAAC
GGCGATTGCTTGAATCATTACCAAAAAGGATGTGTTAAAGCATATAGCACAGATGGCGAACCAAGAT
CCTGATCCATTCTTCAAC
ACGCGTACGCGGCCGCTCGAG - GFP Tag - GTTTAAAC

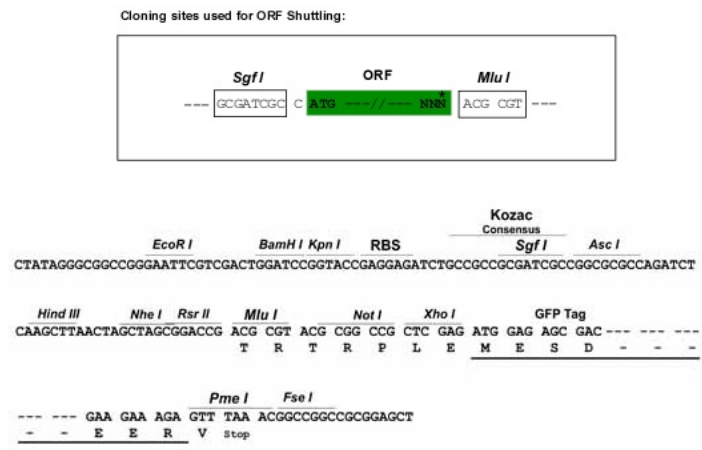
```

Protein Sequence: >Peptide sequence encoded by RG239525
 Blue=ORF Red=Cloning site Green=Tag(s)

MFLPEDKSYNGGGIGSSNRIMDFLEEPVPGVGTYYDDFNTIDWVREKSRDRDRHREITNKSKESTWALIH
 SVSDAFSGWLLMLLIGLLSGSLAGLIDISAHWMTDLKEGICTGGFWFNHEHCCWNSEHVTFEERDKCPE
 WNSWSQLIISTDEGAFAYIVNYFMYVLWALLFAFLAVSLVKVFAPYACSGIPEIKTILSGFIIRGYLG
 KWTLVIKTTITLVLAVSSGLSLGKEGPLVHVACCCGNILCHCFNKYRKNEAKRREVL SAAAAAGVSAFG
 APIGGVLFSLLEVSYYFLKTLWRSFFAALVAAF LRSINPFGNSRLVLFYVEFHPTPHL FELVFPILL
 GIFGGLWGALFIRTNIAWCRKRKTTQLGKYPVIEVLVVTAITAILAFPNEYTRMSTSELISELFNDCGL
 LDSSKLCDYENRFNTSKGGELPDRPAGVGVYSAMWQLAL TLILKIVITIFTFGMKIPSGLFIPSMVGA
 IAGRLGVMQELAYYHQEWTVFNSWCSQGADCITPGLYAMVGAACLGGVTRMTVSLVVIMFELTGGL
 EYIVPLMAAAMTSKWVADALGREGIYDAHIRLNGYPFLEAKEEF AHKTLAMDVMKPRRNDPLLTVLTQD
 SMTVEDVETIISETTYSGFVVVSRESQRLVGFVLRDLIISIENARKKQDGVVSTSIIFYTEHSPPLP
 PYTPPTLKLNRILDLPFTVTDLTPMEIVVDIFRKLGLRQCLVTHNGRLLGIITKKDVLKHIAQMANQD
 PDSILFN
 TRTRPLEMESDESGLPAMEIECRITGTLNGVEFELVGGGEGTPEQGRMTNKMKSTKGALTFSPYLLSHV
 MGYGFYHFGTYPSTYENPFLHAINNGGYNTRIEKYEDGGVLHVSFSYRYEAGRVIGDFKVMGTGFPED
 SVIFTDKIIRSNAIVEHLHPMGDNDLDGSFTRTFSLRDGGYSSVVDSHMHFKAISHPSILQNGGPMFA
 FRRVEEDHSNTELGIVEYQHAFKTPDADAGEERV

Restriction Sites: SgfI-MluI

Cloning Scheme:



ACCN: NM_001282163

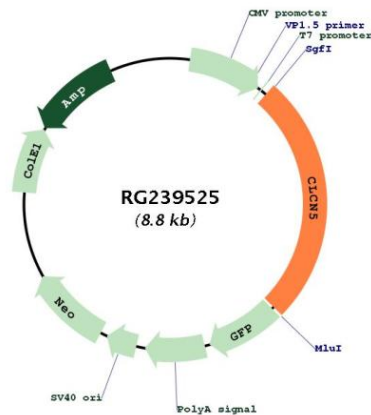
ORF Size: 2298 bp

OTI Disclaimer: The molecular sequence of this clone aligns with the gene accession number as a point of reference only. However, individual transcript sequences of the same gene can differ through naturally occurring variations (e.g. polymorphisms), each with its own valid existence. This clone is substantially in agreement with the reference, but a complete review of all prevailing variants is recommended prior to use. [More info](#)

OTI Annotation: This clone was engineered to express the complete ORF with an expression tag. Expression varies depending on the nature of the gene.

Components:	The ORF clone is ion-exchange column purified and shipped in a 2D barcoded Matrix tube containing 10ug of transfection-ready, dried plasmid DNA (reconstitute with 100 ul of water).
RefSeq:	NM_001282163.1 , NP_001269092.1
RefSeq Size:	9558 bp
RefSeq ORF:	2301 bp
Locus ID:	1184
UniProt ID:	P51795
Cytogenetics:	Xp11.23
Protein Families:	Druggable Genome, Ion Channels: Other, Transmembrane
MW:	85.7 kDa
Gene Summary:	This gene encodes a member of the CIC family of chloride ion channels and ion transporters. The encoded protein is primarily localized to endosomal membranes and may function to facilitate albumin uptake by the renal proximal tubule. Mutations in this gene have been found in Dent disease and renal tubular disorders complicated by nephrolithiasis. Alternatively spliced transcript variants have been found for this gene. [provided by RefSeq, Jan 2013]

Product images:



Circular map for RG239525