

Product datasheet for **RG239518**

TLE3 (NM_001282979) Human Tagged ORF Clone

Product data:

Product Type:	Expression Plasmids
Product Name:	TLE3 (NM_001282979) Human Tagged ORF Clone
Tag:	TurboGFP
Symbol:	TLE3
Synonyms:	ESG; ESG3; GRG3; HsT18976
Mammalian Cell Selection:	Neomycin
Vector:	pCMV6-AC-GFP (PS100010)
E. coli Selection:	Ampicillin (100 ug/mL)



[View online »](#)

ORF Nucleotide Sequence:

>RG239518 representing NM_001282979.
 Blue=ORF Red=Cloning site Green=Tag(s)

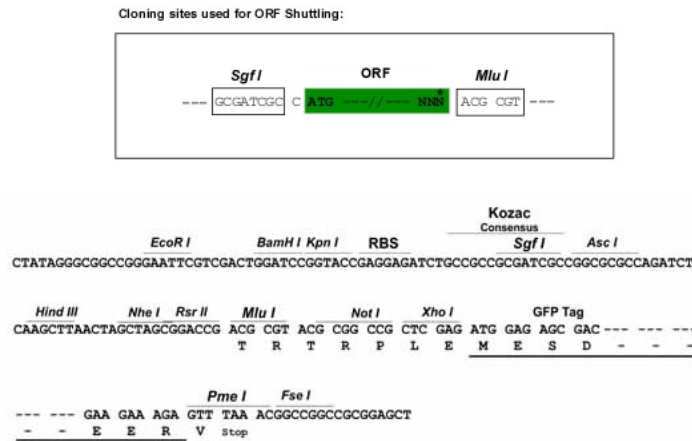
```
GCTCGTTTAGTGAACCGTCAGAATTTTGTAAACGACTCACTATAGGGCGGCCGGGAATTCGTGACTG
GATCCGGTACCGAGGAGATCTGCCGCCCGGATCGCC
ATGTATCCGCAGGGCAGACATCCGGCTCCCATCAACCCGGGCAGCCGGGATTTAAATTCACGGTGGCT
GAGTCTTGTGACAGGATCAAAGACGAATCCAGTTCCTGCAAGCTCAGTATCACAGCCTCAAAGTGGAG
TAGCACAAGCTGGCAAACGAGAAGACGGAGATGCAGCGCCATTATGTGATGACTATGAGATGTCCTAT
GGCTTGAACATTGAAATGCAACAAGCAGACAGAGATTGCGAAGAGACTGAACACAATTTAGCACAGATC
ATGCCTTTCCTGTCAACAAGACACCAGCAGCAGGTGGCGCAGGCAGTGGAGCGGCCAAGCAGGTCAAC
ATGACGGAGTGAACGCCATCATCGGGCAGCAGCAGCTCCAGGCGCAGCACCTCTCCATGCCACACAC
GGCCCCCGGTCCAGTTGCCACCCACCCGTCAGGTCTCCAGCCTCCAGGAATCCCCCAGTGACAGGG
AGCAGCTCCGGGCTGCTGGCACTGGGCGCCCTGGGCAGCCAGGCCATCTGACGGTGAAGGATGAGAAG
AACCACATGAACTCGATCACAGAGAGAGAGAATCCAGTGCGAATAACTCTGTGTACCCCTCGAAAGC
CTCCGGGCCAGTGAGAAGCACCGGGGCTCTGCGGACTACAGCATGGAAGCCAAGAAGCGGAAGCGGAG
GAGAAGGACAGCTTGAGCCGATACGACAGTGATGGAGACAAGAGTGATGATCTGGTGGTGGATGTTCC
AATGAGGACCCCGCAACGCCCGGGTACGCCCGGCACACTCCCCTCCTGAAAATGGGCTGGACAAGGCC
CGTAGCCTGAAAAAGATGCCCCACCAGCCCTGCCTCGGTGGCCTCTTCCAGTAGCACACCTTCTCC
AAGACCAAGACCTTGGTCATAACGACAAATCCTCCACCCTGGGCTCAAGTCCAACACACCAACCCCA
AGGAACGACGCCCAACTCCAGGCACCAGCAGCAGCCAGGGCTCAGGTGATGCCGGTAAACCTCCG
GGCATGGACCCGATAGCCTCGGCTCTGCGCAGCCCATCTCCATCACCAGCTCCTATGCGGCGCCCTT
GCCATGATGAGCCACCATGAGATGAACGGCTCCCTCACCAGTCTGGCGCCTACGCCGGCCTCCACAAC
ATCCCACCCAGATGAGCGCCCGCCGCTGCTGCAGCCGCTGCCTATGGCCGATCGCCAAATGGTTGGT
TTTGACCCTCACCCCGCATGCGGGCCACAGGCCCTCCCCTCAAGCCTGGCCTCCATTCTGGAGGAAAA
CCAGCGTACTCATTCCATGTGAGTGCTGATGGGCAGATGCAGCCCGTGCCTTCCCCACGACGCCCTG
GCAGGCCCGGCATCCCAGGCACGCCCGCAGATCAACACACTCAGCCACGGGGAGGTGGTGTGTGCC
GTGACCATCAGCAACCCACGAGGCACGCTACACAGGTGGCAAGGGCTGCGTGAAGATCTGGGACATC
AGCCAGCCAGGCAGCAAGAGCCCATCTCCAGCTGGACTGCCTGAACAGGGACAATTACATCCGCTCC
TGCAAGCTGCTCCCTGATGGGCGCAGCTCATCGTGGGCGGCGAGGCCAGCAGCTCACCATCTGGGAC
CTGGCCTCGCCACGCCCGCATCAAGGCCGAGCTGACGTCTCGGCTCCCGCTGTTATGCCCTGGCC
ATTAGCCCTGACCCAAAGTCTGCTTCTCCTGCTGCAGCGATGGGAACATTGCTGTCTGGGACCTGCAC
AACCAGACCTGGTCAAGCAGTTCAGGGCCACACAGATGGGGCCAGCTGCATAGACATCTCCCATGAT
GGCACCAAACTGTGGACAGGGGGCTGGACAACACGGTGCCTCCTGGGACCTGCGGGAGGGCCGACAG
CTACAGCAGCATGACTTCACTTCCCAGATCTTCTCGTGGGCTACTGCCCACTGGGGAGTGGCTGGCT
GTGGGCATGGAGAGCAGCAACGTGGAGGTGCTGCACCACCAAGCCTGACAAGTACCAGCTGCACCTG
CACGAGAGCTGCGTGTCTCCCTCAAGTTCGCCTACTGCGGCAAGTGGTTCGTGAGCACTGGGAAAGAT
AACCTTCAACGCCCTGGAGGACGCTTATGGAGCCAGCATATCCAGTCAAAGAATCCTCGTCTGTC
TTGAGTTGTGACATTTAGCGGATGACAAATACATTGTAACAGGCTCTGGTGACAAGAAGGCCACAGTT
TATGAGGTCATCTAC
ACGCGTACGCGGCCGCTCGAG - GFP Tag - GTTTAAAC
```

Protein Sequence: >Peptide sequence encoded by RG239518
 Blue=ORF Red=Cloning site Green=Tag(s)

MYPQGRHPAPHQPGQPGFKFTVAESCDRIKDEFQFLQAQYHSLKVEYDKLANEKTEMQRHYVMYEMS
 YGLNIEMHKQTEIAKRLNTILAQIMPFLSQEHQQQVAQAVERAKQVTMELNAIIGQQQLQAQHLSHATH
 GPPVQLPPHPSGLQPPGIPPVTGSSSGLLALGALGSQAHLTKVDEKNHHELDHRESSANNSSVSPSES
 LRASEKHRGSADYSMEAKKRKAEEKDSLRYDSDGDKSDDLVDVSNEDPATPRVSPAHSPPENGLDKA
 RSLKKDAPTPSPASVASSSTPSSKTKDLGHNDKSSTPGLKSNTPTPRNDAPTPGTSTTPGLRSMGKPP
 GMDPIASALRTPISITSSYAAPFAMMSHHEMNGSLTSPGAYAGLHNIPPQMSAAAAAAAAAYGRSPMVG
 FDPHPPMRATGLPSSLASIPGGKPAYSFHVSADGQMOPVFPHDALAGPGIPRHARQINTLSHGEVYCA
 VTISNPTRHYVTGGKGCVKIWDISQPGSKSPISQLDCLNRDNYIRSKLLPDGRTLIVGGEASTLTIWD
 LASPTPRIKAELTSSAPACYALAI SPDAKVCFSCCSDGNI AVWDLHNQTLVRQFQGHTDGASCIDISHD
 GTKLWTGGLDNTVRSWDLREGRQLQHQDFTSQIFSLGYCPTGEWLAVGMESNVEVLHHTKPKDYQLHL
 HESCVLSLKFAYCGKWFVSTGKDNLLNAWRTPYGASIFQSKSESSVLSCDISADDKYIVTSGDKKATV
 YEVIY
 TRTRPLEMESDESGLPAMEIECRITGTLNGVEFELVGGGEGTPEQGRMTNKMSTKGALTFSPYLLSHV
 MGYGFYHFGTYPSTYENPFLHAINNGGYNTRIEKYEDGGVLHVSFSYRYEAGRVIGDFKVMGTGFPED
 SVIFTDKIIIRSNATVEHLHPMGDNDLDGSFTRTFSLRDGGYSSVVDSHMFKSAIHPSILQNGGPMFA
 FRRVEEDHSNTELGIVEYQHAFKTPDADAGEERV

Restriction Sites: SgfI-MluI

Cloning Scheme:



ACCN: NM_001282979

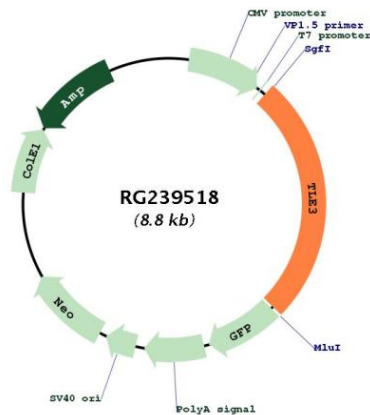
ORF Size: 2292 bp

OTI Disclaimer: The molecular sequence of this clone aligns with the gene accession number as a point of reference only. However, individual transcript sequences of the same gene can differ through naturally occurring variations (e.g. polymorphisms), each with its own valid existence. This clone is substantially in agreement with the reference, but a complete review of all prevailing variants is recommended prior to use. [More info](#)

OTI Annotation: This clone was engineered to express the complete ORF with an expression tag. Expression varies depending on the nature of the gene.

Components:	The ORF clone is ion-exchange column purified and shipped in a 2D barcoded Matrix tube containing 10ug of transfection-ready, dried plasmid DNA (reconstitute with 100 ul of water).
RefSeq:	NM_001282979.2
RefSeq Size:	5736 bp
RefSeq ORF:	2295 bp
Locus ID:	7090
UniProt ID:	Q04726
Cytogenetics:	15q23
Protein Families:	Transcription Factors
MW:	83.1 kDa
Gene Summary:	This gene encodes a transcriptional co-repressor protein that belongs to the transducin-like enhancer family of proteins. The members of this family function in the Notch signaling pathway that regulates determination of cell fate during development. Expression of this gene has been associated with a favorable outcome to chemotherapy with taxanes for ovarian carcinoma. Alternate splicing results in multiple transcript variants. Additional alternatively spliced transcript variants of this gene have been described, but their full-length nature is not known. [provided by RefSeq, Sep 2013]

Product images:



Circular map for RG239518