

Product datasheet for **RG239515**

CSGLCAT (CHPF2) (NM_001284295) Human Tagged ORF Clone

Product data:

Product Type:	Expression Plasmids
Product Name:	CSGLCAT (CHPF2) (NM_001284295) Human Tagged ORF Clone
Tag:	TurboGFP
Symbol:	CHPF2
Synonyms:	chPF-2; ChSy-3; CSGLCA-T; CSGLcAT
Mammalian Cell Selection:	Neomycin
Vector:	pCMV6-AC-GFP (PS100010)
E. coli Selection:	Ampicillin (100 ug/mL)



[View online »](#)

ORF Nucleotide Sequence:

>RG239515 representing NM_001284295.
 Blue=ORF Red=Cloning site Green=Tag(s)

```
GCTCGTTTAGTGAACCGTCAGAATTTTGTAAACGACTCACTATAGGGCGGCCGGGAATTCGTGACTG
GATCCGGTACCGAGGAGATCTGCCGCCGCGATCGCC
ATGCTGTCTTGGCGCGGCCCTCCGCTCCCGCCGACTGGCCTGAGAACGAGCCTGAGCCTCCTGCGGGTT
TCCTGGATCCAGGGGGAGGGAGAAGATCCCTGTGTCGAGGCTGTAGGGGAGCGAGGAGGGCCACAGAAT
CCAGATCCAGAGCTCGGCTAGACCAAAGTGATGAAGACTTCAAACCCCGATTGCCCCCTACTACAGG
GACCCCAACAAGCCCTACAAGAAGGTGCTCAGGACTCGGTACATCCAGACAGAGCTGGGCTCCCGTGAG
CGGTTGCTGGTGGCTGTCTGACCTCCCGAGCTACACTGTCCACTTTGGCCGTGGCTGTGAACCGTACG
GTGGCCCATCACTTCCCTCGTTACTCTACTTCACTGGGCAGCGGGGGCCCGGGCTCCAGCAGGGATG
CAGGTGGTGTCTCATGGGGATGAGCGGCCCGCCTGGCTCATGTCAGAGACCCTGCGCCACCTTACACA
CACTTTGGGGCCGACTACGACTGGTTCTTCATCATGCAGGATGACACATATGTGCAGGCCCCCGCCTG
GCAGCCCTTGTGCCACCTCAGCATCAACCAAGACCTGACTTAGGCCGGGCAGAGGAGTTCATTGGC
GCAGGCGAGCAGGCCCGTACTGTGATGGGGCTTTGGCTACCTGTTGTCACGGAGTCTCCTGCTTCGT
CTGCGGCCACATCTGGATGGCTGCCGAGGAGACATTCTCAGTGCCCGTCTGACGAGTGGCTTGGAGCG
TGCCCTATTGACTCTCTGGGCGTCGGCTGTGTCTCACAGCACCAGGGGCAGCAGTATCGCTCATTGAA
CTGGCCAAAAATAGGGACCCTGAGAAGGAAGGGAGCTCGGCTTTCCTGAGTGCCTTCGCCGTGACCCCT
GTCTCCGAAGGTACCCTCATGTACCGGCTCCACAAACGCTTCAGCGCTCTGGAGTTGGAGCGGGCTTAC
AGTGAAATAGAACAACTGAGGCTCAGATCCGGAACCTGACCGTGTGACCCCGAAGGGGAGGCAGGG
CTGAGCTGGCCGTTGGGCTCCCTGCTCCTTTCACACCACACTCTCGCTTTGAGGTGCTGGGCTGGGAC
TACTTCACAGAGCAGCACACCTTCTCCTGTGCAGATGGGGCTCCCAAGTGCCACTACAGGGGGCTAGC
AGGGCGGACGTGGGTGATGCGTTGGAGACTGCCCTGGAGCAGCTCAATCGGCGCTATCAGCCCGCCTG
CGCTTCCAGAAGCAGCGACTGCTCAACGGCTATCGGCGCTTCGACCCAGCACGGGCATGGAGTACACC
CTGGACCTGCTGTTGGAATGTGTGACACAGCGTGGGCACCGCGGGCCCTGGCTCGCAGGGTCAGCCTG
CTGCGGCCACTGAGCCGGGTGGAATCCTACCTATGCCCTATGTCAGTGGGCCACCCGAGTGCAGCTG
GTGCTGCCACTCCTGGTGGCTGAAGCTGCTGCAGCCCCGGCTTTCCTCGAGGCCTTTCAGCCAATGTC
CTGGAGCCACGAGAACATGCATTGCTCACCTGTTGCTGGTCTACGGGCCACGAGAAGGTGGCCGTGGA
GCTCCAGACCCATTTCTGGGTGAAGGCTGCAGCAGCGGAGTTAGAGCGACGGTACCCTGGGACGAGG
CTGGCCTGGCTCGCTGTGCGAGCAGAGGCCCTTCCCAGGTGCGACTCATGGACGTGGTCTCGAAGAAG
CACCTGTGGACTCTCTTCTTCTTACCACCGTGTGGACAAGGCTGGGCCCGAAGTCTCAACCGC
TGTGCGCATGAATGCCATCTCTGGCTGGCAGGCCTTCTTCCAGTCCATTTCCAGGAGTTCATCCTGCC
CTGTACCCACAGAGATCACCCCAAGGGCCCGGGGGCTGGCCCTGACCCCCCTCCCTCCTGGTGTGCT
GACCCCTCCCGGGGGGCTCCTATAGGGGGGAGATTTGACCGGCAGGCTTCTGCGGAGGGCTGCTTCTAC
AACGCTGACTACCTGGCGGCCGAGCCCGGCTGGCAGGTGAACTGGCAGGCCAGGAAGAGGAGGAAGCC
CTGGAGGGGCTGGAGGTGATGGATGTTTCTCCGTTCTCAGGGCTCCACCTCTTTCGGGCCGTAGAG
CCAGGGCTGGTGCAGAAGTTCTCCCTGCGAGACTGCAGCCACGGCTCAGTGAAGAACTTACCACCGC
TGCCGCTCAGCAACCTGGAGGGGCTAGGGGGCGTGCCAGCTGGCTATGGCTCTTTTGGCAGGAG
CAGGCCAATAGCACT
ACGCGTACGCGGCCGCTCGAG - GFP Tag - GTTTAAAC
```

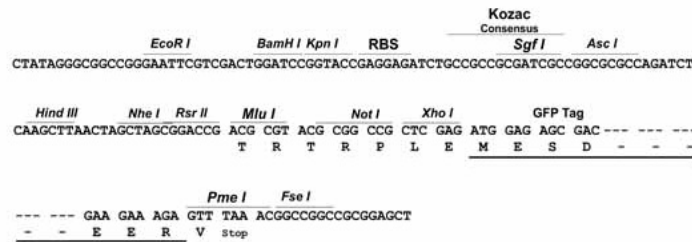
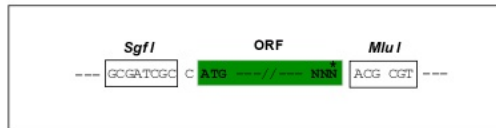
Protein Sequence: >Peptide sequence encoded by RG239515
 Blue=ORF Red=Cloning site Green=Tag(s)

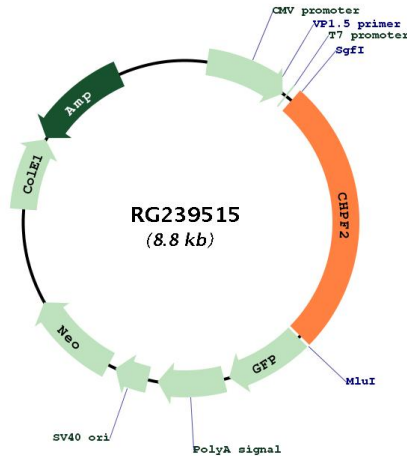
MLSLARPPLPPTGLRTSLSLLRVSIIQEGEDPCVEAVGERGGPQNPDSRARLDQSDDFKPRIVPYR
 DPNKPKYKVLRTYIQTGLGSRERLLVAVLTSRATLSTLAVAVNRTVAHHFPRLLYFTGQRGARAPAGM
 QVYSHGDERPAWLMSETLRHLHTHFGADYDFFFIMQDDTYVQAPRLAALAGHLSINQDL YLGRAEEF IG
 AGEQARYCHGGFYLLSRSLLLRLRPHLDGCRGDILSARPDWELGRCLIDSLGVGCVSQHQQQYRSFE
 LAKNRDPEKEGSSAFLSAFVHPVSEGTLMYRLHKRFSALELERAYSEIEQLQAQIRNLTVLTPEGEAG
 LSWPVGLPAPFTPHSRFEVLGWDYFTEQHTFSCADGAPKCLQGASRADVGDALETALEQLNRRYQRL
 RFQKQRLNNGYRRFDPARGMEYTLDLLLECVTQRGHRRALARRVSLRPLSRVEILPMPYVTEATRVQL
 VLP LLVAEAAAAPAFLEAFAANVLEPREHALLTLLL VYGPREGGRGAPDPFLGVKAAAELERRYPGTR
 LAWLAVRAEAPSQVRLMDVVSKKHPVDTLFFLTTVWTRPGPEVLNRCRMNAISGWQAFPPVHFQEFNPA
 LSPQRSPPGGAPDPPSPGADPSRGAPIGGFRDQASAEGCFYNADYLAARARLAGELAGQEEEEEA
 LEGLEVMDVFLRFSGLHLFRAVEPGLVQKFSLRDCSPRLSEELYHRCRLSNLEGLGGAQLAMALFEQE
 QANST
 TRTRPLEMESDESGLPAMEIECRITGTLNGVEFELVGGGEGTPEQGRMTNKMSTKGALTFSPYLLSHV
 MGYGFYHFGTYPSTYENPFLHAINNGGYNTRIEKYEDGGVLHVSFSYRYEAGRVIGDFKVMGTGFPED
 SVIFTDKIIIRSNATVEHLHPMGDNDLDGSFTRTFSLRDGGYSSVVDSHMFKSAIHPSILQNGGPMFA
 FRRVEEDHSNTELGIVEYQHAFKTPDADAGEERV

Restriction Sites: SgfI-MluI

Cloning Scheme:

Cloning sites used for ORF Shuttling:



Plasmid Map:


ACCN: NM_001284295

ORF Size: 2292 bp

OTI Disclaimer: Due to the inherent nature of this plasmid, standard methods to replicate additional amounts of DNA in *E. coli* are highly likely to result in mutations and/or rearrangements. Therefore, OriGene does not guarantee the capability to replicate this plasmid DNA. Additional amounts of DNA can be purchased from OriGene with batch-specific, full-sequence verification at a reduced cost. Please contact our customer care team at custsupport@origene.com or by calling 301.340.3188 option 3 for pricing and delivery.

The molecular sequence of this clone aligns with the gene accession number as a point of reference only. However, individual transcript sequences of the same gene can differ through naturally occurring variations (e.g. polymorphisms), each with its own valid existence. This clone is substantially in agreement with the reference, but a complete review of all prevailing variants is recommended prior to use. [More info](#)

OTI Annotation: This clone was engineered to express the complete ORF with an expression tag. Expression varies depending on the nature of the gene.

Components: The ORF clone is ion-exchange column purified and shipped in a 2D barcoded Matrix tube containing 10ug of transfection-ready, dried plasmid DNA (reconstitute with 100 ul of water).

RefSeq: [NM_001284295.2](#)

RefSeq Size: 2730 bp

RefSeq ORF: 2295 bp

Locus ID: 54480

Cytogenetics: 7q36.1

Protein Pathways: Chondroitin sulfate biosynthesis, Metabolic pathways

MW: 85.6 kDa

Gene Summary: Transfers glucuronic acid (GlcUA) from UDP-GlcUA to N-acetylgalactosamine residues on the non-reducing end of the elongating chondroitin polymer. Has no N-acetylgalactosaminyltransferase activity.[UniProtKB/Swiss-Prot Function]