

Product datasheet for **RG239512**

CDC27 (NM_001293091) Human Tagged ORF Clone

Product data:

Product Type:	Expression Plasmids
Product Name:	CDC27 (NM_001293091) Human Tagged ORF Clone
Tag:	TurboGFP
Symbol:	CDC27
Synonyms:	ANAPC3; APC3; CDC27Hs; D0S1430E; D17S978E; H-NUC; HNUC; NUC2
Mammalian Cell Selection:	Neomycin
Vector:	pCMV6-AC-GFP (PS100010)
E. coli Selection:	Ampicillin (100 ug/mL)



[View online »](#)

ORF Nucleotide
Sequence:

>RG239512 representing NM_001293091.
Blue=ORF Red=Cloning site Green=Tag(s)

```
GCTCGTTTAGTGAACCGTCAGAATTTTGTAAACGACTCACTATAGGGCGGCCGGGAATTCGTGACTG
GATCCGGTACCGAGGAGATCTGCCGCCGCGATCGCC
ATGGCAAGCACTAAACCACTATGCTTACCGAGATGCGGTTTTCTCGCAGAACGCCTTTATGCAGAAGG
CTTGCAAGGGGAACAAATCTTATCTGGTGGAGTGTAAATAAGCAGAAAAGCCATGATGATATGTT
ACTGAGTTTGGTATTACGCTTGCTTACTCTTTCATTGTTGGGACATGTATATTGCAAGACAGATCGG
CTTGCCAAAGGATCAGAATGTTACCAAAAAGAGCCTTAGTTTAAATCCTTCTCGGTCTCCCTTTGAA
TCATTATGTGAAATAGGTGAAAAGCCAGATCTGACCAAAACATTTAAATTCACATCTTTACAGAACTTT
AGCAACTGTCTGCCAACTCTTGCAACAACAAGTACCTAATCATAGTTTATCTCACAGACAGCCTGAG
ACAGTTCTTACGGAAACACCCAGGACACAATTGAATTAACAGATTGAATTTAGAATCTTCCAATTCA
AAGTACTCCTTGAATACAGATTCCTCAGTGTCTTATATTGATTACAGTGAATTTACCTGATACTGTC
CCACTGGGAACAGGAACCTCCATATTATCTAACAGGTTCAAAAATAACCAAAAACCTGGTGAAGTTTA
TTAGGAGGACCAGCAGCTTAGTCCATTAACCCCAAGTTTTGGGATTTGCCATTAGAAAACCCCAAGT
CCTGGAGATGGATCCTATTTACAAAACACTAATACACCTCCTGTAATTGATGTGCCATCCACCGGA
GCCCTTCAAAAAAGTCTGTTGCCAGAATCGGCCAAAACGGAAACAAAGTCTGTCTTCTCACAGAGTGGA
AATAGCCGAGAGGTAACCTCAATTCTTGCACAAAACAAAAGTTCTGGTCCAAAACAAGTACAACACCT
CAGGTATTGAGCCCACTATTACATCTCCCCAAACGCACTGCCTCGAAGAAGTTCACGACTCTTACT
AGTGACAGCTCCACAACCAAGGAGAATAGCAAAAAATTAATAAAGTTCACCTAAAATCCCAAAAC
AGAAAAACAAAAGTAAAATAAAGGAGGAATAACTCAACCTAACATAAATGATAGCCTGGAATTT
ACAAAATTGGACTCTTCCATCTTTGAGAAGGGAAAATATCCACAATCACACCTCAGATTCAGGCCTTT
AATCTACAAAAGCAGCAGCAGAAGGTTGATGAGCCTTCTTCTGAAAATGGGAAAAGTTATTTAGCT
TTGTGTTTCATACAACTGCAAGAAGCTATAAATATTTGAGCCATCTACCTTCTCACCACACTACAATACT
GTTGGTACTGTGCAAAATTGGAAGGGCTATTTTGAACTTTCAGAGTACATGCAAGCTGAAAAGATA
TTCTCAGAGGTTAGAAGGATTGAGAATTATAGAGTTGAAGGCATGGAGATCTACTCTACAACACTTTGG
CATCTTCAAAAAGATGTTGCTCTTTCAGTTCTGTCAAAAGACTTAACAGACATGGATAAAAATTCGCCA
GAGGCCTGGTGTGCTGCAGGGAAGTGTTCAGTCTGCAACGGGAACATGATATTGCAATTAATTTCTTC
CAGAGAGCTATCCAAGTTGATCCAAATACGCTTATGCCTATACTCTATTAGGGCATGAGTTTGTCTTA
ACTGAAGAATTGGACAAAGCATTAGCTTGTTCGAAATGCTATCAGAGTCAATCCTAGACATTATAAT
GCATGGTATGGTTTAGGAATGATTTATTACAAGCAAGAAAAATTCAGCCTTGCAGAAATGCATTTCCAA
AAAGCGCTTGATATCAACCTCAAAGTTCAAGTTTACTTTGCCACATTGGAGTAGTTCAACATGCACTG
AAAAAATCAGAGAAGGCTTTGGATACCCTAAACAAAGCCATTGTATTGATCCCAAGAACCTCTATGC
AAATTTACAGAGCCTCAGTTTTATTTGCAAAATGAAAAATATAAGTCTGCTTTACAAGAAGTTGAAGAA
TTGAAACAAATGTTCCCAAGAATCCCTCGTTTACTTCTTAATAGGAAAGGTTTACAAGAAGTTAGGT
CAAACGCACCTCGCCCTGATGAATTTCTTGGGCTATGGATTTAGATCCTAAAGGAGCCAATAACCAG
ATTAAGAGGCAATTGATAAGCGTTATCTTCCAGATGATGAGGAGCCAATAACCAAGAAGAACAGATC
ATGGGAACAGATGAATCCAGGAGAGCAGCATGACAGATGCGGATGACACACAACCTCATGCAGCTGAA
AGTGATGAATTT
ACGCGTACGCGGCCGCTCGAG - GFP Tag - GTTTAAAC
```

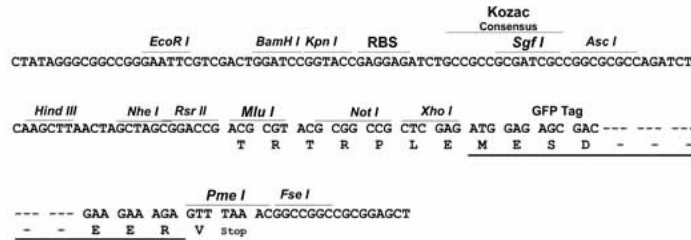
Protein Sequence: >Peptide sequence encoded by RG239512
 Blue=ORF Red=Cloning site Green=Tag(s)

MASTKPLCLPRCGFPRRTPLCRRLAEEQILSGGVFNKQKSHDDIVTEFGDSACFTLSLLGHVYCKTDR
 LAKGSECYQKSLSLNPFLLWSPFESLCEIGEKPPDQTFKFTSLQNF SNCLPNSCTTQVPHSLSHRQPE
 TVLTETPQDTIELNRLNLESSNSKYSLNTDSSVSYIDSAVISPDTVPLGTGTSILSKVQNKPKTGRSL
 LGGPAALSPLTSPFGILPLETPSPGDGSYLQNYTNTPPVIDVPSTGAPSKKSVARIGQTGKSVFSQSG
 NSREVTPILAQTQSSGPQTSTTPQVLSPTITSPNALPRRSSRLFTSDSSTTKENSKLKMFPKIPN
 RKTKSKTNKGGITQPNINDSLEITKLDSSIISEGKISTITPQIQAFNLQAAAEGMLSLREMKGKYLA
 LCSYNCKEAINILSHLPSHYNTGWVLCQIGRAYFELSEYMQAERIFSEVRRRIENYRVEGMEIYSTTLW
 HLQKDVALSVLSKDLTMDKNSPEAWCAAGNCFSLQREHDAIAIKFFQRAIQVDPNYAYATLLGHEFVL
 TEELDKALACFRNAIRVNPRHYNAWYGLGMIYYKQEKFLAEMHFQKALDINQSSVLLCHIGVVQHAL
 KKSEKALDTLNKAIVIDPNLCKFHRSVLFANEKYKSALQELEELKQIVPKESLVYFLIGKVYKLG
 QTHLALMNF SWAMDLPKGANNQIKEAIDKRYLPDDEEPI TQEEQIMGTDESQESSMTDADDTQLHAAE
 SDEF
 TRTRPLEMESDESGLPAMEIECRITGTLNGVEFELVGGEGTPEQGRMTNKMSTKGALTFSPYLLSHV
 MGYGFYHFGTYPSTYENPFLHAINNGGYNTRIEKYEDGGVLHVSFSYRYEAGRVIGDFKVMGTGFPED
 SVIFTDKIIIRSNAIVEHLHPMGDNDLDGSFTRTFSLRDGGYSSVVDSHMHFKSAIHPSILQNGGPMFA
 FRRVEEDHSNTELGIVEYQHAFKTPDADAGEERV

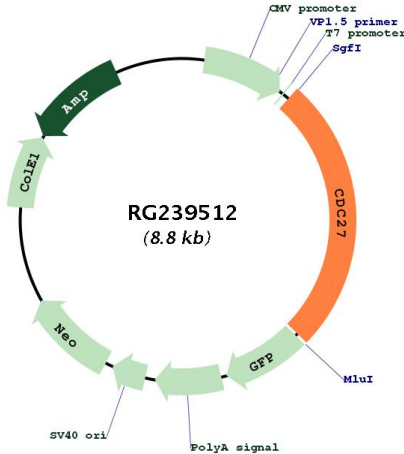
Restriction Sites: SgfI-MluI

Cloning Scheme:

Cloning sites used for ORF Shuttling:



Plasmid Map:



ACCN:	NM_001293091
ORF Size:	2289 bp
OTI Disclaimer:	The molecular sequence of this clone aligns with the gene accession number as a point of reference only. However, individual transcript sequences of the same gene can differ through naturally occurring variations (e.g. polymorphisms), each with its own valid existence. This clone is substantially in agreement with the reference, but a complete review of all prevailing variants is recommended prior to use. More info
OTI Annotation:	This clone was engineered to express the complete ORF with an expression tag. Expression varies depending on the nature of the gene.
Components:	The ORF clone is ion-exchange column purified and shipped in a 2D barcoded Matrix tube containing 10ug of transfection-ready, dried plasmid DNA (reconstitute with 100 ul of water).
RefSeq:	NM_001293091.3
RefSeq Size:	5705 bp
RefSeq ORF:	2292 bp
Locus ID:	996
Cytogenetics:	17q21.32
Protein Families:	Druggable Genome
Protein Pathways:	Cell cycle, Oocyte meiosis, Progesterone-mediated oocyte maturation, Ubiquitin mediated proteolysis
MW:	85.3 kDa

Gene Summary:

The protein encoded by this gene shares strong similarity with *Saccharomyces cerevisiae* protein Cdc27, and the gene product of *Schizosaccharomyces pombe* nuc 2. This protein is a component of the anaphase-promoting complex (APC), which is composed of eight protein subunits and is highly conserved in eukaryotic cells. This complex catalyzes the formation of cyclin B-ubiquitin conjugate, which is responsible for the ubiquitin-mediated proteolysis of B-type cyclins. The protein encoded by this gene and three other members of the APC complex contain tetratricopeptide (TPR) repeats, which are important for protein-protein interactions. This protein was shown to interact with mitotic checkpoint proteins including Mad2, p55CDC and BUBR1, and it may thus be involved in controlling the timing of mitosis. Alternative splicing of this gene results in multiple transcript variants. Related pseudogenes have been identified on chromosomes 2, 22 and Y. [provided by RefSeq, May 2014]