

Product datasheet for **RG239509**

TLE3 (NM_001282981) Human Tagged ORF Clone

Product data:

| | |
|---------------------------|--|
| Product Type: | Expression Plasmids |
| Product Name: | TLE3 (NM_001282981) Human Tagged ORF Clone |
| Tag: | TurboGFP |
| Symbol: | TLE3 |
| Synonyms: | ESG; ESG3; GRG3; HsT18976 |
| Mammalian Cell Selection: | Neomycin |
| Vector: | pCMV6-AC-GFP (PS100010) |
| E. coli Selection: | Ampicillin (100 ug/mL) |



[View online »](#)

ORF Nucleotide Sequence:

>RG239509 representing NM_001282981.
 Blue=ORF Red=Cloning site Green=Tag(s)

```

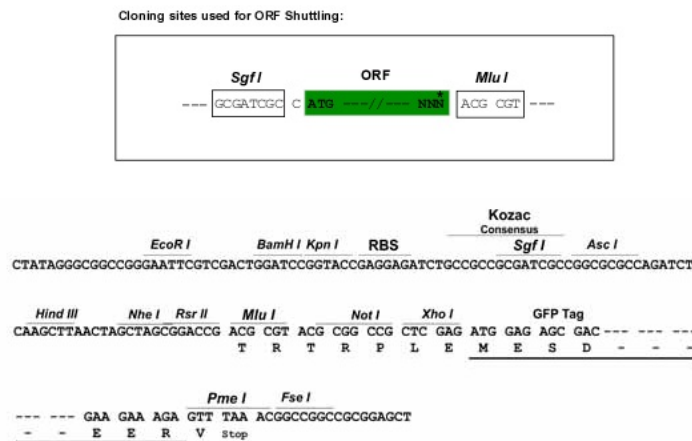
GCTCGTTTAGTGAACCGTCAGAATTTTGTAAACGACTCACTATAGGGCGGCCGGGAATTCGTGACTG
GATCCGGTACCGAGGAGATCTGCCGCCACGATCGCC
ATGGCTCCCCATCAACCCGGGCAGCCGGGATTTAAATTCACGGTGGCTGAGTCTTGTGACAGGATCAAA
GACGAATTCAGTTCCTGCAAGCTCAGTATCACAGCCTCAAAGTGGAGTACGACAAGCTGGCAAACGAG
AAGACGGAGATGCAGCGCCATTATGTGATGTAATGAGATGTCTATGGCTTGAACATTGAAATGCAC
AAGCAGACAGAGATTGCGAAGAGACTGAACACAATTTTAGCACAGATCATGCCTTTCCTGTCAAGAG
CACCAGCAGCAGGTGGCGCAGGCAGTGGAGCGGCCAAGCAGGTCACCATGACGGAGCTGAACGCCATC
ATCGGGCAGCAGCAGCTCCAGGCGCAGCACCTCTCCATGCCACACACGGCCCCCGGTCCAGTTGCCA
CCCCACCCGTCAAGTCTCCAGCTCCAGGAATCCCCCAGTGACAGGGAGCAGCTCCGGGCTGCTGGCA
CTGGGCGCCCTGGGCAGCCAGGCCATCTGACGGTGAAGGATGAGAAGAACCACCATGAACTCGATCAC
AGAGAGAGAGAATCCAGTGCGAATAACTCTGTGCACCCTCGAAAGCCTCCGGGCCAGTGAGAAGCAC
CGGGGCTCTCGGACTACAGCATGGAAGCCAAGAAGCGGAAGGGCGGAGGAGAAGGACAGCTTGAGCCGA
TACGACAGTGATGGAGACAAGAGTGATGATCTGGTGGTGGATGTTTCCAATGAGGACCCCGCAACGCC
CGGGTCAGCCCGGCACACTCCCCCTCTGAAATGGGCTGGACAAGGCCCGTAGCCTGAAAAAAGATGCC
CCCACAGCCCTGCCTCGGTGGCTCTTCCAGTAGCACACCTTCTCCAAGACCAAAGACCTTGGTCAT
AACGACAAATCTCCACCCTGGGCTCAAGTCCAACACACCAACCCCAAGGAACGACGCCCAACTCCA
GGCACCAGCAGACCCAGGGCTCAGGTGATGCCGGTAAACCTCCGGGCATGGACCCGATAGCCTCG
GCTCTGCCACGCCCATCTCCATCACCAGCTCCTATGCGGCGCCCTTCGCCATGATGAGCCACCATGAG
ATGAACGGCTCCCTCACCAGTCTGGCGCTACGCCGCTCCACAACATCCCACCCAGATGAGCCGCC
GCCCGCTGCTGCAGCCGCTGCTATGGCCGATCGCCAATGGTGAAGTGGAGCTTTGGAGCTTGGTTTGG
CCTCACCCCGATGCGGGCCACAGGCCCTCCCCCTCAAGCCTGGCCTCATTCTGGAGGAAAACCGCG
TACTCATTCCATGTGAGTGTGATGGGCAGATGCAGCCCGTGCCCTTCCCCACGACGCCCTGGCAGGC
CCCGCATCCCGAGGCACGCCCGGCAGATCAACACACTCAGCCACGGGGAGGTGGTGTGTGCCGTGACC
ATCAGCAACCCACGAGGCACGTCTACACAGGTGGCAAGGGCTGCGTGAAGATCTGGGACATCAGCCAG
CCAGGCAGCAAGAGCCCCATCTCCAGCTGGACTGCCTGAACAGGGACAATTACATCCGCTCCTGCAAG
CTGCTCCCTGATGGGCGCAGCTCATCGTGGGCGGCGAGGCCAGCAGCTCACCATCTGGGACCTGGCC
TCGCCCACGCCCGCATCAAGGCCGAGCTGACGTCTCGGCTCCCGCTGTTATGCCCTGGCCATTAGC
CCTGACGCCAAAGTCTGCTTCTCCTGCTGCAGCGATGGGAACATTGCTGTCTGGACCTGCACAACCAG
ACCTGTGTCAGGAGTTCAGGGCCACACAGATGGGGCCAGCTGCATAGACATCTCCCATGATGGCACC
AACTGTGGACAGGGGGCTGGACAACACGGTGCCTCCTGGACCTGCGGGAGGGCCGACAGCTACAG
CAGCATGACTTCACTTCCAGATCTTCTCGCTGGGCTACTGCCCACTGGGGAGTGGCTGGCTGTGGGC
ATGGAGAGCAGCAACGTGGAGGTGCTGCACCACCAAGCCTGACAAGTACCAGCTGCACCTGCACGAG
AGCTGCGTGTCTCCCTCAAGTTCGCTACTGCGCAAGTGGTTCGTGAGCACTGGGAAAGATAACCTT
CTCAACGCTGGAGGACGCTTATGGAGCCAGCATATCCAGTCTAAGAATCCTCGTCTGTCTTGAGT
TGTGACATTTAGCGGATGACAAATACATTGTAACAGGCTCTGGTGACAAGAAGGCCACAGTTTATGAG
GTCATCTAC
ACGCGTACGCGGCCGCTCGAG - GFP Tag - GTTTAAAC
  
```

Protein Sequence: >Peptide sequence encoded by RG239509
 Blue=ORF Red=Cloning site Green=Tag(s)

MAPHQPGQPGFKFTVAESCDRIKDEFQFLQAQYHSLKVEYDKLANEKTEMQRHYVMYYEMSYGLNIEMH
 KQTEIAKRLNTILAQIMPFLSQEHQQQVAQAVERAKQVTMELNAIIGQQQLQAQHLSHATHGPPVQLP
 PHPSGLQPPGIPPVTGSSSGLLALGALGSQAHLVKDEKNHHELDHRERESSANNSSVSPSESLRASEKH
 RGSADYSMEAKKRKAEEKDSLRYVSDGDKSDDLVDVSNEDPATPRVSPAHSPPENGLDKARSLKKDA
 PTSPASVASSSTPSSKTKDLGHNDKSSTPGLKSNTPTPRNDAPTPGTSTTPGLRSMGKPPGMDPIAS
 ALRTPISITSSYAAPFAMMSHHEMNGSLTSPGAYAGLHNIPPQMSAAAAAAAAAYGRSPMVSFVAVGFD
 PHPPMRATGLPSSLASIPGGKPAYSFHVSADGQMOPVPPFDALAGGIPRHRARQINTLSHGEVCAVT
 ISNPTRHYVTGGKGCVKIWDISQPGSKSPISQLDCLNRDNYIRSKLLPDGRTLIVGGEASTLTIWDLA
 SPTPRIKAELTSSAPACYALAI SPDAKVCFSCCSDGNIAVWDLHNQTLVRQFQGHTDGASCIDISHDGT
 KLWTGGLDNTVRSWDLREGRQLQHQDFTSQIFSLGYCPTGEWLAVGMESSNVEVLHHTKPKDYQLHLHE
 SCVLSLKFAYCGKWFVSTGKDNLLNAWRTPYGASIFQSKSESSVLSCDISADDKYIVTSGDGKKATVYE
 VIY
 TRTRPLEMESDESGLPAMEIECRITGTLNGVEFELVGGGEGTPEQGRMTNKMSTKGALTFSPYLLSHV
 MGYGFYHFGTYPSTYENPFLHAINNGGYNTRIEKYEDGGVLHVSFSYRYEAGRVIGDFKVMGTGFPED
 SVIFTDKIIIRSNATVEHLHPMGDNDLDGSFTRTFSLRDGGYSSVVD SHMHFKSAIHPSILQNGGPMFA
 FRRVEEDHSNTELGIVEYQHAFKTPDADAGEERV

Restriction Sites: SgfI-MluI

Cloning Scheme:



ACCN: NM_001282981

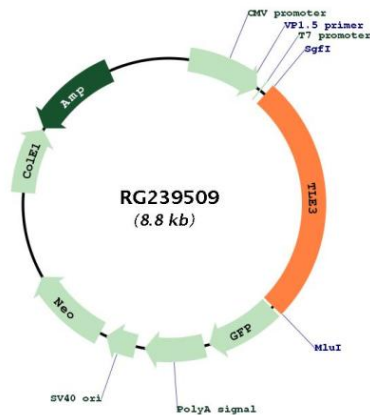
ORF Size: 2286 bp

OTI Disclaimer: The molecular sequence of this clone aligns with the gene accession number as a point of reference only. However, individual transcript sequences of the same gene can differ through naturally occurring variations (e.g. polymorphisms), each with its own valid existence. This clone is substantially in agreement with the reference, but a complete review of all prevailing variants is recommended prior to use. [More info](#)

OTI Annotation: This clone was engineered to express the complete ORF with an expression tag. Expression varies depending on the nature of the gene.

| | |
|--------------------------|--|
| Components: | The ORF clone is ion-exchange column purified and shipped in a 2D barcoded Matrix tube containing 10ug of transfection-ready, dried plasmid DNA (reconstitute with 100 ul of water). |
| RefSeq: | <u>NM_001282981.1, NP_001269910.1</u> |
| RefSeq Size: | 4684 bp |
| RefSeq ORF: | 2289 bp |
| Locus ID: | 7090 |
| UniProt ID: | <u>Q04726</u> |
| Cytogenetics: | 15q23 |
| Protein Families: | Transcription Factors |
| MW: | 82.7 kDa |
| Gene Summary: | This gene encodes a transcriptional co-repressor protein that belongs to the transducin-like enhancer family of proteins. The members of this family function in the Notch signaling pathway that regulates determination of cell fate during development. Expression of this gene has been associated with a favorable outcome to chemotherapy with taxanes for ovarian carcinoma. Alternate splicing results in multiple transcript variants. Additional alternatively spliced transcript variants of this gene have been described, but their full-length nature is not known. [provided by RefSeq, Sep 2013] |

Product images:



Circular map for RG239509