

## Product datasheet for **RG239501**

### **DPP6 (NM\_001290252) Human Tagged ORF Clone**

#### **Product data:**

Product Type:	Expression Plasmids
Product Name:	DPP6 (NM_001290252) Human Tagged ORF Clone
Tag:	TurboGFP
Symbol:	DPP6
Synonyms:	DPL1; DPPX; MRD33; VF2
Mammalian Cell Selection:	Neomycin
Vector:	pCMV6-AC-GFP (PS100010)
E. coli Selection:	Ampicillin (100 ug/mL)



[View online »](#)

ORF Nucleotide  
Sequence:

>RG239501 representing NM\_001290252.  
Blue=ORF Red=Cloning site Green=Tag(s)

```
GCTCGTTTAGTGAACCGTCAGAATTTTGTAAACGACTCACTATAGGGCGGCCGGGAATTCGTGACTG
GATCCGGTACCGAGGAGATCTGCCGCCGCGATCGCC
ATGACCACAGCCAAGGAGCCAAGCGCTTCGGGAAATCCGTGCAGCAGCAGGAACAGGAGCTGGTGGGG
AGTAACCTCCGCAGAGGAATTGGAAAGGAATAGCAATTGCACTGCTTGTATTCTGGTCATCTGTCTCC
TTGATCGTCACCTCGGTCACTTCTGACACCAGCGGAAGATAATAGTCTGTCTCAAAGAAGAAGGTC
ACTGTAGAAGATCTCTTCACTGAAGACTTCAAATTCATGACCCCGAGGCTAAGTGATAAGTGATACA
GAATTCATCTACAGAGAACAGAAAGGAACAGTGAAGTGTGAAACAAATACTTCTACTGTC
TTAATAGAAGGCAAAAAAATGAATCATTAAGAGCCATCAGATATGAAATATCTCCAGATAGAGAGTAT
GCACTTTTTTATACAATGTGGAACCCATATTTATTTTTGAAAACAATATCTACTACTGTGCACATGTC
GGGAAACAGGCCATCCGTGTGGTCTCCACTGGCAAGGAAGGTGTGATTTACAATGGCCTCAGTGACTGG
CTGTATGAAGAGGAGATTTGAAGACACACATCGCACACTGGTGGTCTCCGGATGGCAGCAGACTCGCC
TAGCCCGCATCAATGATTCCCCTGTCCCATCATGGAGCTCCCAACTTACACCGCTCCATCTACCCC
ACCGTGAAGCCCTACCCTATCCCAAGGCTGGAAGTGAGAACCCAGCATTTCCTACACGTTATTGGC
TTAAATGGACCCACCCATGATCTGGAGATGATGCCGCTGATGATCCACGGATGAGGGAGTACTACATC
ACCATGGTGAAGTGGGCCACCAGCACCAGGTCGCCGTGACCTGGCTGAACCGGGCGCAGAACGTGTCC
ATCCTCACCTCTGCGACGCCACCACGGGGTCTGCACGAAGAAACACGAGGATGAAAGTGAAGCCCTGG
CTCCACAGACAGAATGAAGAACCTGTGTCTCCAAGGATGGCCGAAAGTTTTTCTTATCAGAGCCATC
CCCCAGGAGGACGAGGGAAATCTATCACATCACGGTGTCTCGTCCCAGCCAAACAGCAGCAACGAC
AACATCCAGTCCATCACCTCCGGGACTGGGACGTGACCAAGATCCTAGCCTACGATGAGAAGGGGAAT
AAGATCTACTTCTGAGCAGGAGGACCTGCCTCGGAGACGACAACTCTACAGTGCCAACACGGTGGGC
AACTTCAACAGGCAGTGCCTCTCCTGTGACCTGGTTGAGAAGTGCACCTACTTCAGCGCTTCTCCTCAGC
CATAGCATGGACTTCTTCTGCTCAAGTGCAGGTCCTGGTGTCTTATGGTGACGGTGACAACACA
ACAGATAAGAAAAAATGTTTGACCTAGAAACAAATGAACATGTCAAGAAGGCCATAAATGACCGACAG
ATGCCTAAAGTGAATACAGGGACATTGAGATTGATGATTACAACCTGCCATGCAGATACTGAAGCCA
GCAACCTTACCGACACCACCCACTACCCTCTGCTCCTGGTGGTGGATGGCACCCAGGCAGCCAGAGT
GTGGCTGAGAAGTTCGAGGTGAGCTGGGAGACGGTGTGGTGGTGGTGGTGGTGGTGGTGGTGGTGGTGGT
TGTGACGGCCGTGGCAGCGGCTTCAAGGGACCAAGCTCCTGCACGAAGTGAAGCGCGCGGTGGTGGTGGT
CTGGAGGAGAAGGACCAGATGGAGGCCGTGCGGACGATGCTGAAGGAGCAGTACATTGACAGGACGCGC
GTGGCCGTGTTTGGGAAGGATTACGGTGGCTACCTGAGCACCTACATCCTCCAGCAAAGGGAGAAAAT
CAAGGCCAGACATTACCTGCGGCTCTGCTCTCTCCAATAACAGACTTCAAATCTATGCCTCTGCG
TTTTCCGAGAGGTAATGGGCTCCATGGACTTGACAACAGAGCATACGAGATGACCAAGGTAGCCCAT
CGAGTCTCCGCGTGGAAAGAACAGCAGTTCTGATCATTATCCCACTGCCGATGAAAAAATTCATTTCC
CAGCACACAGCAGAACTATTACACAATAATTAGGGGAAAGGCTAATTACAGCTTACAGATTTACCCG
GACGAAAGCCATTACTTTACCAGCTCCAGCCTCAAACAGCATCTGTACCGGTCCATCAACTTCTTC
GTGGAATGCTTCAGGATCCAGGACAAACTGCTGACAGTACAGCGAAAGAGGACGAGGAGGAGGAC
ACGCGTACGCGGCCGCTCGAG - GFP Tag - GTTTAAAC
```

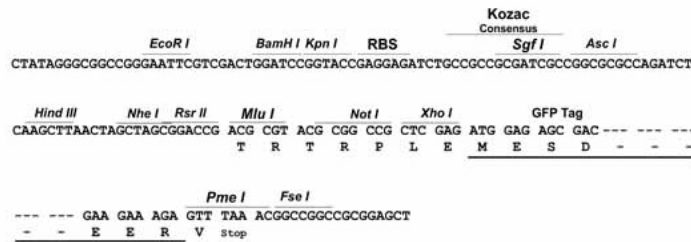
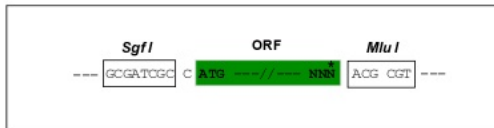
Protein Sequence: >Peptide sequence encoded by RG239501  
 Blue=ORF Red=Cloning site Green=Tag(s)

MTAKEPSASGKSVQQQEQELVGSNPPQRNWKGIATALLVILVICSLIVTSVILLTPAEDNSLSQKKKV  
 TVEDLFSDFKIHDPKAWISDTEFIYREQGTVRLWNVETNTSTVLEGGKIESLRAIRYEISPDREY  
 ALFSYNVEPIFIFENNIYYCAHVQKQAIRVSTGKEGVIYNGLSDWLYEIEILKTHIAHWSPDGLRLA  
 YAAINDSRVPIMELPTYTGSIIYPTVKPYHYPKAGSENPISLHVIGLNGPTHLEMMPPDDPRMREYI  
 TMVKWATSTKVAVTWLNRAQNVSLTLCDATTGVCTKKHEDESEAWLHRQNEEPVFSKDGRKFFIRAI  
 PQGGRGKFYHITVSSSQPNSSNDNIQSITSGDWDVTKILAYDEKGNKIYFLSTEDLPRRQLYSANTVG  
 NFNQRCLSCDLVENCTYFSASFSSMDFFLLKCEGPGVPMVTVHNTTDKMKMFDLETNEHVKKAINDRQ  
 MPKVEYRDIEIDYDNLPMQILKPATFTDTHYPLLLVVDGTPGSQVAEKFEVSWETVMVSSHGAVVVK  
 CDGRGSGFQGTLLHEVRRRLGLLEEKDQMEAVRMLKEQYIDRTRVAVFGKDYGGYLSTYILPAKGEN  
 QGQFTFCGSALSPITDFKLYASAFSERYLGLHGLDNRAYEMTKVAHRVSALEEQQFLIIHPTADEKIH  
 QHTAELITQLIRKANYSLQIYPDESHYFTSSSLKQHLYRSIINFFVECFRIQDKLLTVTAKEDDEED  
 TRTRPLEMESDESGLPAMEIECRITGTLNGVEFELVGGGEGTPEQGRMTNKMSTKGALTFSPYLLSHV  
 MGYGFYHFGTYPSTYENPFLHAINNGGYTNRIEKYEDGGVLHVSFSYRYEAGRVIGDFKVMGTGFPE  
 SVIFTDKIIRSNATVEHLHPMGDNDLDGSFTRTFLRDGGYSSVVDSHMHFKSAIHPSILQNGGPMFA  
 FRRVEEDHSNTELGIVEYQHAFKTPDADAGEERV

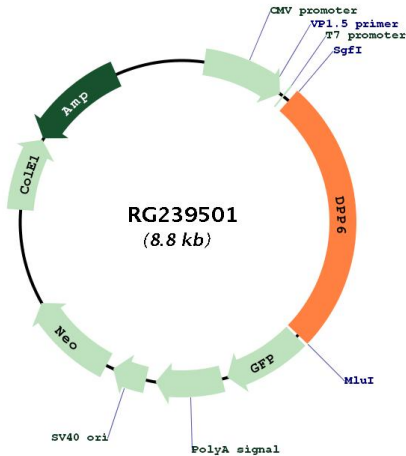
Restriction Sites: SgfI-MluI

Cloning Scheme:

Cloning sites used for ORF Shuttling:



## Plasmid Map:



ACCN: NM\_001290252

ORF Size: 2274 bp

OTI Disclaimer: The molecular sequence of this clone aligns with the gene accession number as a point of reference only. However, individual transcript sequences of the same gene can differ through naturally occurring variations (e.g. polymorphisms), each with its own valid existence. This clone is substantially in agreement with the reference, but a complete review of all prevailing variants is recommended prior to use. [More info](#)

OTI Annotation: This clone was engineered to express the complete ORF with an expression tag. Expression varies depending on the nature of the gene.

Components: The ORF clone is ion-exchange column purified and shipped in a 2D barcoded Matrix tube containing 10ug of transfection-ready, dried plasmid DNA (reconstitute with 100 ul of water).

RefSeq: [NM\\_001290252.2](#)

RefSeq Size: 4370 bp

RefSeq ORF: 2277 bp

Locus ID: 1804

Cytogenetics: 7q36.2

Protein Families: Druggable Genome, Protease, Transmembrane

MW: 86.8 kDa

**Gene Summary:**

This gene encodes a single-pass type II membrane protein that is a member of the peptidase S9B family of serine proteases. This protein has no detectable protease activity, most likely due to the absence of the conserved serine residue normally present in the catalytic domain of serine proteases. However, it does bind specific voltage-gated potassium channels and alters their expression and biophysical properties. Variations in this gene may be associated with susceptibility to amyotrophic lateral sclerosis and with idiopathic ventricular fibrillation. Alternative splicing results in multiple transcript variants. [provided by RefSeq, Mar 2014]