

## Product datasheet for **RG239488**

### TLE 1 (TLE1) (NM\_001303104) Human Tagged ORF Clone

#### Product data:

Product Type:	Expression Plasmids
Product Name:	TLE 1 (TLE1) (NM_001303104) Human Tagged ORF Clone
Tag:	TurboGFP
Symbol:	TLE1
Synonyms:	ESG; ESG1; GRG1
Mammalian Cell Selection:	Neomycin
Vector:	pCMV6-AC-GFP (PS100010)
E. coli Selection:	Ampicillin (100 ug/mL)



[View online »](#)

**ORF Nucleotide Sequence:**

>RG239488 representing NM\_001303104.  
 Blue=ORF Red=Cloning site Green=Tag(s)

```

GCTCGTTTAGTGAACCGTCAGAATTTTGTAAACGACTCACTATAGGGCGGCCGGGAATTCGTGACTG
GATCCGGTACCGAGGAGATCTGCCGCCACGATCGCC
ATGTTCCCGCAGAGCCGGCACCCGACCCGACCCGACCCAGGCTGCAGGCCAGCCCTTCAAGTTCACATATCCCG
GAGTCCCTGGACCGGATTAAGAGGAATCCAGTTCCTGCAGGCCAGTATCACAGCCTTAAATTGGAA
TGTGAGAAACTGGCAAGTGAAAAGACAGAAATGCAGAGGCACTATGTGATGATTATGAAATGCATAT
GGATTAACATTGAAATGCACAAACAGACTGAAATCGCCAAGAGATTGAATACGATTTGTGCACAAGTC
ATCCCATTTCTGTCTCAGGAACATCAACAACAGGTGGCCAGGCTGTTGAACGTGCCAAACAGGTGACC
ATGGCAGAATTGAATGCCATCATCGGGCAGCAGCAGTTGCAAGCTCAGCATCTTTCTCATGGCCACGGA
CCCCAGTTCCCCTTACGCCTCACCTTCGGGACTTCAGCCTCCTGGAATCCCGCCCTCGGGGGCAGT
GCCGGCCTTCTTGCCTGTCTAGTGTCTGAGTGGCAGTCTCACTTGGCAATAAAAGATGACAAGAAG
CACCACGATGCAGAGCACACAGAGACAGAGAGCCGGGCACAAGTAATCCCTCCTGGTCCCAGACAGT
CTAAGAGGCACAGATAAACGCAGAAATGGACCTGAATTTTCCAATGACATCAAGAAAAGGAAGTGGAT
GATAAGGACTCCAGCCACTATGACAGTGATGGTGACAAAAGCGATGACAACCTTAGTTGTGGATGTGTCT
AATGAGGACCTTCTTCTCCGCGAGCAAGCCCTGCCCACTCGCCCGGGAAAATGGAATCGACAAAAT
CGCCTGTCAAAGAAGGATGCTTCTAGCAGTCCAGCTTCCACGGCCTCCTCGGCAAGTTCCACTTCTTTG
AAATCAAAGAAATGAGCTTGCATGAAAAGCCAGCAGCCTGTTCTGAAATCCAGCACACCAACGCCT
CGGAGCGACATGCCAACGCCGGGACCAGCGCCACTCCAGGCCTCCGTCCAGCAGCTGGCTTGAGGACA
CCCCTGGCAGTGGCCGGCCATATCCTGCTCCTTTGGGATGGTCCCCACGCTGGCATGAACGGCGAG
CTGACCAGCCCAGGCGCTGCCTACGCCAGTTTACACAACATGTCGCCCCAGATGAGCGCCGACCCGCC
CGGGCCCGTGGTGGCCTACGGGCGCTCCCCATGGTGGGTTTGTATCCTCCCCCTCACATGAGAGTA
CCTACCATTCTCAAACCTGGCAGGAATCCCTGGGGGAAACCTGCATACTCCTCCACGTTACTGCA
GACGGTCAGATGCAGCCTGTCCCTTTCCCGGACGCCCTCATCGGACCCGGAATCCCCGGCATGCT
CGCCAGATCAACACCCTCAACCACGGGAGGTGGTGTGCGCTGTGACCATCAGCAACCCACGAGACAC
GTGTACACAGGCGGGAAGGGCTGCGTCAAGGTCTGGGACATCAGCCACCCTGGCAATAAGAGCCCTGTC
TCCCAGCTCGACTGTCTGAACAGAGACAATTATCCGTTCTGTAAATTGCTACCCGATGGCTGCACT
CTCATAGTGGGAGGGGAAGCCAGTACTTTGTCCATTTGGGACCTGGCGGCTCCAACCCCGCATCAAG
GCGGAGCTGACGCTCCTCGCCCCCGCTGCTACGCCCTGGCCATCAGCCCGATTCCAAGGTCTGCTTC
TCATGCTGCAGCGACGGCAACATCGCTGTGTGGGATCTGCACAACCAGACACTAGTGAGGCAATCCAG
GGCCACACAGACGGAGCCAGCTGTATTGACATTTCTAATGATGGCACCAGCTCTGGACGGTGGTTTG
GACAACACAGTCAGGTCCTGGGACCTGCCGAGGGGGCGGAGCTGCAGCAGCAGCACTTCACTCCCAG
ATCTTCTCCCTGGGTAAGTGCACCCAGGGGAGTGGCTGGCAGTGGGATGGAGAGCAGCAATGTGGAG
GTGCTGCACGTGAACAAGCCTGACAAGTACCAGCTGCACCTGCATGAGAGCTGCGTGTGCTGCTGAAA
TTTGCTTACTGTGGTAAATGGTTTGTGAGTACTGGAAAAGATAACCTCCTCAATGCTTGGCGGACCCC
TATGGAGCCAGCATATCCAGTCCAAGAGTCCCTCGTCACTGCTTAGCTGTGACATCTCTGTGGATGAT
AAGTACATAGTCACTGGCTCGGGGACAAGAAGGCTACAGTCTATGAAGTCATCTAC
ACGCGTACGCGGCCGCTCGAG - GFP Tag - GTTTAAAC
  
```

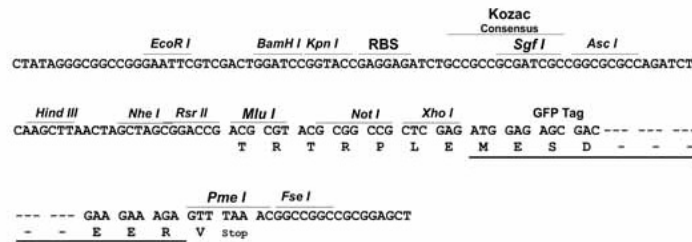
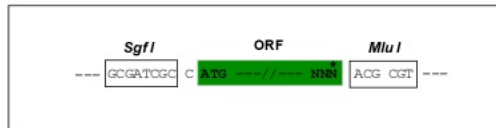
Protein Sequence: >Peptide sequence encoded by RG239488  
 Blue=ORF Red=Cloning site Green=Tag(s)

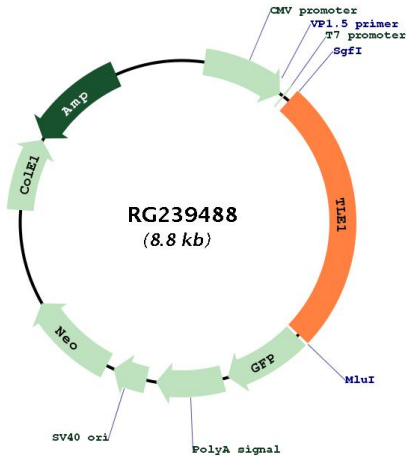
MFPQSRHPTPHQAAGQPFKFTIPESLDRIKEEFQFLQAQYHSLKLECEKLAASEKTEMQRHYVMMYEMSY  
 GLNIEMHKQTEIAKRLNTICAQVIPFLSQEHQQQVAQAVERAKQVTMAELNAIGQQQLQAQHLSHGHG  
 PPVPLTPHPGLQPPGIPPLGGSAGLLALSSALSGQSHLAIKDDKKHHDAAEHHRDREPGTNSLLVPDS  
 LRGTDKRRNGPEFSNDIKKRKVDKDSHYSDGDKSDDNLVVDVSNEDPSSPRASPAHSPRENGIDKN  
 RLLKKDASSPASTASSSTSLKSKEMSLHEKASTPVLKSTPTPRSDMPTPGTSATPGLRPAAGLRT  
 PLAVPGYPAPFGMVPHAGMNGELTSPGAAYASLHNMSPOMSAAAAAAVVAYGRSPMVGDFPPPHMRV  
 PTIPPNLAGIPGGKPAYSFHVTADGQMOPVFPFDALIGPGIPRHARQINTLNHGEVVCAVTISNPTRH  
 VYTGKGCVKVWDISHPGNKSPVSQLDCLNRDNYIRSKLLPDGCTLIVGGEASTLSIWDLAAPTTRIK  
 AELTSSAPACYALAI SPDSKVCFSCCSDGNI AVWDLHNQTLVRQFQHTD GASCIDISNDGKLTWGGL  
 DNTVRSWDLREGRQLQQHDFTSQIFSLGYCPTGEWLA VMESSNVEVLHV NPKDYQLHLHESC VLSLK  
 FAYCGKWFVSTGKDNLLNAWRTPYGASIFQSKESSVLSCDISVDDKIYIVTGSGDKKATVVEVIY  
 TRTRPLEMESDEGLPAMEIECRITGTLNGVEFELVGGEGTPEQGRMTNKMKSTKGALTFSPYLLSHV  
 MGYGFYHFGTYP SGYENPFLHAINNGGYNTRIEKYEDGGVLHV SF SYRYEAGRVIGDFKVMGTGFPE  
 SVIFTDKIIRS NATVEHLHPMGDNDLDGSFTRTFLRDGGYSSVVD SHMHFKSAIHPSILQNGGPMFA  
 FRRVEEDHSNTELGIVEYQHAFKTPDADAGEERV

Restriction Sites: SgfI-MluI

Cloning Scheme:

Cloning sites used for ORF Shuttling:



**Plasmid Map:**


**ACCN:** NM\_001303104

**ORF Size:** 2265 bp

**OTI Disclaimer:** The molecular sequence of this clone aligns with the gene accession number as a point of reference only. However, individual transcript sequences of the same gene can differ through naturally occurring variations (e.g. polymorphisms), each with its own valid existence. This clone is substantially in agreement with the reference, but a complete review of all prevailing variants is recommended prior to use. [More info](#)

**OTI Annotation:** This clone was engineered to express the complete ORF with an expression tag. Expression varies depending on the nature of the gene.

**Components:** The ORF clone is ion-exchange column purified and shipped in a 2D barcoded Matrix tube containing 10ug of transfection-ready, dried plasmid DNA (reconstitute with 100 ul of water).

**RefSeq:** [NM\\_001303104.1](#), [NP\\_001290033.1](#)

**RefSeq Size:** 4092 bp

**RefSeq ORF:** 2268 bp

**Locus ID:** 7088

**UniProt ID:** [Q04724](#)

**Cytogenetics:** 9q21.32

**Protein Families:** Transcription Factors

**MW:** 82.2 kDa

**Gene Summary:**

Transcriptional corepressor that binds to a number of transcription factors. Inhibits NF-kappa-B-regulated gene expression. Inhibits the transcriptional activation mediated by FOXA2, and by CTNNB1 and TCF family members in Wnt signaling. The effects of full-length TLE family members may be modulated by association with dominant-negative AES. Unusual function as coactivator for ESRRG.[UniProtKB/Swiss-Prot Function]