

Product datasheet for **RG239476**

SORBS1 (NM_001290295) Human Tagged ORF Clone

Product data:

Product Type:	Expression Plasmids
Product Name:	SORBS1 (NM_001290295) Human Tagged ORF Clone
Tag:	TurboGFP
Symbol:	SORBS1
Synonyms:	CAP; FLAF2; R85FL; SH3D5; SH3P12; SORB1
Mammalian Cell Selection:	Neomycin
Vector:	pCMV6-AC-GFP (PS100010)
E. coli Selection:	Ampicillin (100 ug/mL)



[View online »](#)

ORF Nucleotide Sequence:

>RG239476 representing NM_001290295.
 Blue=ORF Red=Cloning site Green=Tag(s)

```

GCTCGTTTAGTGAACCGTCAGAATTTTGTAAACGACTCACTATAGGGCGGCCGGGAATTCGTGACTG
GATCCGGTACCGAGGAGATCTGCCGCCACGATCGCC
ATGAGTTCTGAATGTGATGGTGGTTCCAAAGCTGTGATGAATGGCTTGGCACCTGGCAGCAATGGGCAA
GACAAAGACATGGATCCTACAAAAATCTGCACCTGGGAAGGAGCGGTGACTCTCCGGCCCTCGTCTTCC
TACAGGGAAACCCCAAGCAGTAGCCCTGCGAGCCCTCAGGAAACCCGGCAACACGAAAGCAAACCGGT
CTGGAGCCAGAGCCTTCTTCAGCAGATGAGTGGAGGCTTTCTTCCAGTGCTGATGCCAATGGAAATGCC
CAGCCCTCTTCACTCGCTGCCAAGGGCTACAGAAGTGTGCATCCCAACCTTCTTCTGACAAGTCCCAG
GATTCCAGTCTCTACTAAATGAAGTTTCTTCTCCCTTATTGGAAGTATTCCCAAGCCTTTCCATCA
GTTAGCAAGCCTTCATCCGCTATCCCTCCACAACGATTGTCAATCTACTATTGTGCTCTTGCAACAC
AATCGAGAACAGCAAAAACGACTCAGTAGCCTTTCAGATCCTGTCTCAGAAAGAAGAGTGGGAGAGCAG
GACTCAGCACCAACCCAGGAAAAACCCACCTCACCTGGCAAGGCTATTGAAAAAGAGCAAAGGATGAC
AGTAGGGGGTGGTGAAGAGCACTCAGGACTTAAGCGATGTTTCCATGGATGAAGTGGGCATCCCACTC
CGGAACACTGAGAGATCAAAGACTGGTACAAGACTATGTTTAAACAGATCCACAAAACCTGAACAGAGAT
GATGATTCAGATCTGACTCTCCAGATACTCATTCTTGAAGACACAAAATCTCCCTTTCTGTGCCT
CGCTCAAAAAGTGAGATGAGCTACATTGATGGTGAAGGTAGTCAAGAGGTCCGCCACACTACCCCTC
CCAGCCCGCTCTTCTCACTGAAGTCAAGCTCAGAAAGAAATGACTGGGAACCCCGAGATAAGAAAGTA
GACACAAGAAAATATCGTGCAGAGCCCAAGAGCATTACGAATATCAGCCTGGCAAGTCTTCCGTTCTG
ACCAACGAAAAGATGAGCTCAGCCATCAGCCCTACTCCGAAATTTCTTCCAGAGACTCCTGGATATA
TATTCTTCCAACCTCCATGCAGTGAAGAGGGAATCAGACGGGGCTCCTGGGGATCTCACTAGCTTGGAG
AATGAGAGACAAAATTTATAAAAGTGTCTTGAAGGTGGTACATCCCTTTCAGGGCCTGAGTGGGCTC
AAGCGACCATCCAGCTCTGCTTCCACTAAAGATTGAGAATCGCCAAGACATTTTATACCAGCTGATTAC
TTGGAATCCACGGAAGAATTTATTCGAAGACGTCATGATGATAAAGAGAACTTTTAGCGGACCAGAGA
CGACTTAAACGCGAGCAAGAAGAGGCTGATATTGCAGCTCGACGCCACACAGGCGTCATTCCGACGCAC
CATCAGTTTATCACTAATGAGCGCTTTGGGGACCTCCTCAATATAGACGATACTGCAAAAAGGAAATCT
GGGTGAGAGATGAGACCTGCCAGAGCCAAATTTGACTTTAAAGCTCAGACACTAAAGGAGCTTCTCTG
CAGAAGGGAGATATTGTTTACATTTATAAGCAAATGATCAGAAGTGGTATGAAGGAGAACACCACGGC
CGGGTGGGAATCTTCCACGCACCTACATCGAGCTTCTTCTCCTGCTGAGAAGGCACAGCCAAAAAG
TTGACACCAGTGCAGTTTTGGAATATGGAGAAGCTATTGCTAAGTTAACTTTAATGGTGATACACAA
GTAGAAATGTCTTCCAGAAAGGGTGAAGGATCAGACTGCTCCGGCAGGTAGATGAGAACTGGTACGAA
GGGAGGATCCCGGGGACATCCCGACAAGGCATCTTCCCATCACCTACGTGGATGTGATCAAGCGACCA
CTGGTGAAAAACCTGTGGATTACATGGACCTGCCTTTCTCCTCCTCCCAAGTCGCAGTGCCTACTGCA
AGCCCACAGCAACCTCAAGCCCAGCAGCAAGAGTCAACCCCGACAGGAGTCAAACCTCACAAGATTTA
TTAGCTATCAAGCATTATAGCTATATACCACAGAATGATGATGAGTTGGAAGTCCCGGATGGAGAT
ATCGTTGATGTCATGGAAAAATGTGACGATGGATGGTTTGTGGTACTTCAAGAAGGACAAAAGCAGTTT
GGTACTTTTCCAGGCAACTATGTAAAACCTTTGTATCTA
ACGCGTACGCGGCCGCTCGAG - GFP Tag - GTTTAAAC
  
```

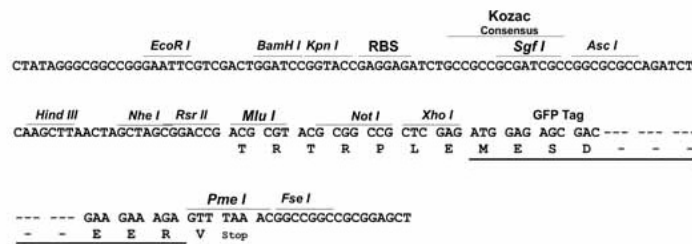
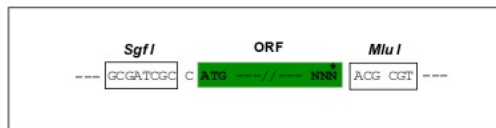
Protein Sequence: >Peptide sequence encoded by RG239476
 Blue=ORF Red=Cloning site Green=Tag(s)

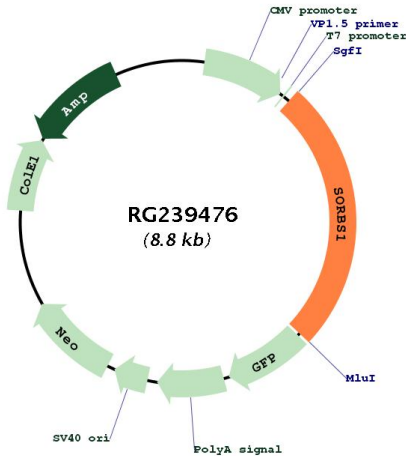
MSSECDDGGSKAVMNGLAPGSNGQDKMDPTKICTGKGAVTLRASSYRETPSSSPASPQETRQHESKPG
 LEPEPSSADEWRLSSSADANGNAQPSSLAAGYRSVHPNLPSDKSQDSSPLLNEVSSSLIGTDSQAFPS
 VSKPSSAYPSTTIVNPTIVLLQHNREQQKRLSSLSDPVSERRVGEQDSAPTQEKPTSPGKAIEKRAKDD
 SRRVVKSTQDLSDVSMDEVGIPLRNTERSKDWYKTMFKQIHLNRDDSDLYSPRYSFSEDTKSPLSVP
 RSKSEMSYIDGKVVKRSATLPLPARSSSLKSSSERNDWEPDKKVDTRKYRAEPKSIYEYQPGKSSVL
 TNEKMSSAISPTPEISSETPGYIYSSNFHAVKRES DGAPGDLTSENERQIYKSVLEGGDIPLQGLSGL
 KRPSSASTKDSESPRHFIPADYLESTEEFIRRRHDDKEKLLADQRRLKREQEEADIAARRHTGVIPTH
 HQFITNERFGDLLNIDDTAKRSGSEMRPARAKFDKAQTLKELPLQKGDIVYIYKQIDQNWYEGEHHG
 RVGIFPRTYIELPPAEKAQPKKLTVPQVLEYGEAIAKFNFGDTQVEMSFRRKGERITLLRQVDENWYE
 GRIPGTSRQGFIPITYVDVIKRPLVKNPVDYMDLFPSSSPRSATASPQQPQAQQRVTPDRSQTSDQL
 FSYQALYSYIPQNDLELRDGDIVDMEKCDDGWFVGTSRRTKQFGTFPGNYVKPLYL
TRTRPLEMESDESGLPAMEIECRITGTLNGVEFELVGGGEGTPEQGRMTNKMSTKGALTFSPYLLSHV
MGYGFYHFGTYPSTYENPFLHAINNGGYTNTRIEKYEDGGVLHVSFSYRYEAGRVIGDFKVMGTGFPEL
SVIFTDKIIRSNATVEHLHPMGDNDLDGSFTRTFLRDGGYSSVVD SHMHFKSAIHPSILQNGGPMFA
FRRVEEDHSNTELGIVEYQHAFKTPDADAGEERV

Restriction Sites: SgfI-MluI

Cloning Scheme:

Cloning sites used for ORF Shuttling:



Plasmid Map:


ACCN: NM_001290295

ORF Size: 2247 bp

OTI Disclaimer: The molecular sequence of this clone aligns with the gene accession number as a point of reference only. However, individual transcript sequences of the same gene can differ through naturally occurring variations (e.g. polymorphisms), each with its own valid existence. This clone is substantially in agreement with the reference, but a complete review of all prevailing variants is recommended prior to use. [More info](#)

OTI Annotation: This clone was engineered to express the complete ORF with an expression tag. Expression varies depending on the nature of the gene.

Components: The ORF clone is ion-exchange column purified and shipped in a 2D barcoded Matrix tube containing 10ug of transfection-ready, dried plasmid DNA (reconstitute with 100 ul of water).

RefSeq: [NM_001290295.1](#), [NP_001277224.1](#)

RefSeq Size: 5784 bp

RefSeq ORF: 2250 bp

Locus ID: 10580

UniProt ID: [Q9BX66](#)

Cytogenetics: 10q24.1

Protein Families: Druggable Genome

Protein Pathways: Adherens junction, Insulin signaling pathway, PPAR signaling pathway

MW: 84.4 kDa

Gene Summary:

This gene encodes a CBL-associated protein which functions in the signaling and stimulation of insulin. Mutations in this gene may be associated with human disorders of insulin resistance. Alternative splicing results in multiple transcript variants. [provided by RefSeq, Mar 2014]